

PARTS MANUAL

MANUAL NO. 900-G

MODELS VM4020, 5020 & 6020

!!!WARRANTY REGISTRATION INSIDE MUST BE COMPLETED AND RETURNED WITHIN 15 DAYS OF INVOICE SALE DATE OR WARRANTY IS REDUCED!!! DON'T LOSE YOUR FULL WARRANTY!!!



SCHULER MFG. & EQUIP. CO., INC.

63724 RICHLAND ROAD

GRISWOLD, IOWA 51535

PHONE - 712-774-2228

FAX - 712-774-2230

E-mail: schuler@schulermfg.net

Web Page: www.schulermfg.net

VM4020 Serial No.'s Ending in 136 and up
VM5020 Serial No.'s Ending in 133 and up

Date of Purchase

Model Number

Serial Number

Checked at Factory By

IMPORTANT NOTICE

*It is essential to return the White Copy of the
PURCHASER'S WARRANTY REGISTRATION
(located inside of the manual)
to Schuler Mfg. & Equip. Co., Inc., to validate the
machine warranty.*

MANUAL REVISIONS

PRINTING DATE: NOVEMBER, 2011

PRICE: \$7.00

CONTENTS

VM4020, VM5020 & VM6020

PARTS

When Ordering Parts.....	1
Safety and Operational Decals.....	2-3
Mixer Tub Assembly.....	4-5
1000 RPM PTO Drivelines & Transfer Box.....	6-7
540 RPM PTO Drivelines & Transfer Box	8-9
Dual Discharge Conveyor 119" & 101"	10-12
Discharge Conveyor.....	13-14
Fold-Up Extension – 25".....	15-16
Fold-Up Extension – 40".....	17-18
Fold-Up Extension – 50".....	19-20
Fold-Up Extension – 65".....	21-22
Fold-Up Extension – 80".....	23-24
Front Discharge Conveyor Rubber Spout.....	25
Magnet Spout Assembly.....	26
Transfer Box.....	27
2-Speed Gearbox.....	28
VM4020, 5020, 6020 Frame.....	29-30
8-Bolt Spindle.....	31
Tires & Wheels.....	32
10-Bolt Spindle.....	33-34
VM6020 10-Bolt Spindle.....	35-36
Tire Options.....	36
Wiring Diagram.....	37
Rear Discharge Door (Option).....	38
Hydraulics – Discharge Conveyor.....	39
Electronic Scale – Weight Tronix.....	40
Electronic Scale – Digistar.....	41
Side Discharge Tub Assembly.....	42
Instructions for 2-Speed Gearbox.....	43
2-Speed Shift Cable Option.....	44
Hyd. Side Shift Dual Discharge.....	45-46

WHEN ORDERING PARTS

Always have the following information available for phone orders or included in your written order.

1. **Machine Model**
2. **Serial Number**
3. **A general parts description can be very helpful to insure shipping the correct part. Often the customer does not know the part number, or has read the wrong number from the manual. Asking the following questions, where applicable, can help eliminate many questions on what the customer needs.**
 - a. **Number of teeth on sprocket or gear.**
 - b. **Bore size / OD of part.**
 - c. **Length of part, flight, auger, etc.**
 - d. **Is pulley a cast spoke / steel stamping.**
 - e. **Any other questions that may be applicable.**
4. **Address all parts orders to:**

Schuler Mfg. & Equip. Co., Inc.
63724 Richland Rd
Griswold, IA 51535
5. **For phone orders call – 712-774-2228.**
 - a. **Collect Calls – Please be advised that Schuler Mfg. & Equip. Co., Inc. does not accept collect telephone calls.**

Schuler Mfg. & Equip. Co., Inc. takes pride in fast customer service. Same day parts shipments can be made on UPS if the order is called in before 10:00 AM and the parts are in stock.

All part descriptions and dimensions are reference to inches unless specified otherwise.

SAFETY AND OPERATIONAL DECALS

SAFETY AND OPERATIONAL DECALS

SAFETY DECALS ARE PLACED ON THE MIXER/FEEDER FOR THE PROTECTION OF THE OPERATOR OR ANY PERSON NEAR THE UNIT.

Be sure everyone who operates this equipment understands all the information, warning, caution, and danger decals.

Keep the decals CLEAN so they are readable. This applies to all caution, warning, and danger decals.

It is the OWNER'S RESPONSIBILITY to provide information for safe operation of this machine.

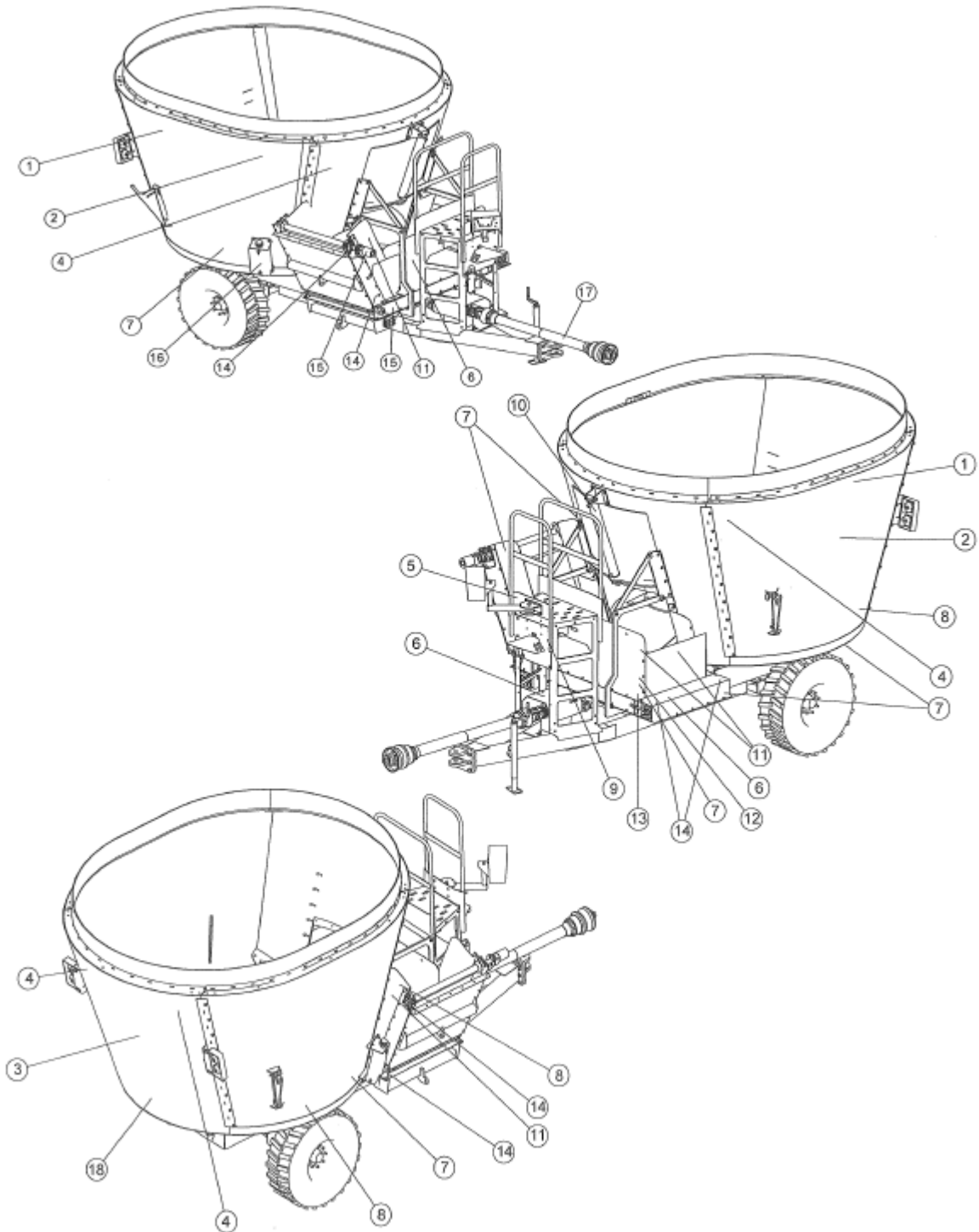
Replace any damaged or worn decals. Once any part of a decal becomes non-readable, it should be replaced. The part numbers for the decals are located in the lower RH corner of the decal, and listed in this manual on the following pages. Replacement decals may be ordered through your dealer or the address below.

When replacing decals, be sure the surface area is clean and dry, peel the backing off the decal, and apply to the machine. Be sure to wipe with a clean cloth to rub out all air bubbles to assure a good seal. For best adhesion, decals should be applied in temperatures of 50 degrees (F) or warmer.

DECALS

ITEM	QTY	PART NUMBER	DESCRIPTION
1	2	10010-0103	DECAL, SCHULER, 6 x 32
2	2	10010-0143	DECAL, SCHULER, VM4020
	2	10010-0144	DECAL, SCHULER, VM5020
	2	10010-0145	DECAL, SCHULER, VM6020
	2	10010-0147	DECAL, SCHULER, VM2820
3	1	10010-0100	DECAL, SCHULER, QUALITY BUILT
4	4	10010-0230	DECAL, DANGER, ROTATING AUGER HAZARD
5	1	10010-0664	DECAL, IMPORTANT, TIGHTEN WHEEL LUGS
6	3	10010-0225	DECAL, DANGER, DO NOT USE THIS SHIELD FOR STEP
7	4	10010-0921	DECAL, YELLOW REFLECTIVE TAPE
8	5	10010-0920	DECAL, RED REFLECTIVE TAPE
9	1	FEMA	DECAL, GREASE GUN, 50 HOURS
10	1	10010-0680	DECAL, O, 1,2,3,C
11	4	10010-0317	DECAL, WARNING, KEEP OUT MOVING PARTS, FAILURE TO HEED...
12	1	10010-0550	DECAL, VM OPERATING INSTRUCTIONS
13	1	10010-0421	DECAL, IMPORTANT, READ OPERATORS MANUAL
14	6	10010-0520	DECAL, GREASE GUN, 500 HOURS
15	2	10010-0340	DECAL, WARNING, HIGH PRESSURE FLUID HAZARD
16	1	10010-0663	DECAL, IMPORTANT, OIL LEVEL (SIGHT GAUGE)
17	1	10010-0210	DECAL, DANGER, PTO, ROTATING DEVICE
18	1	10010-0500	DECAL, SLOW MOVING VEHICLE
<u>VMMDL-1125 INCLUDES</u>			
	1	10010-0671	DECAL, IMPORTANT, USE ONLY HIGH SPEED AT 4000 LB. LOAD
	1	10010-0663	DECAL, IMPORTANT, OIL LEVEL (SIGHT GAUGE)
	1	10010-0662	DECAL, 2-SPEED GEAR PATTERN
	1	10010-0700	DECAL, 2-SPEED

SAFETY DECALS

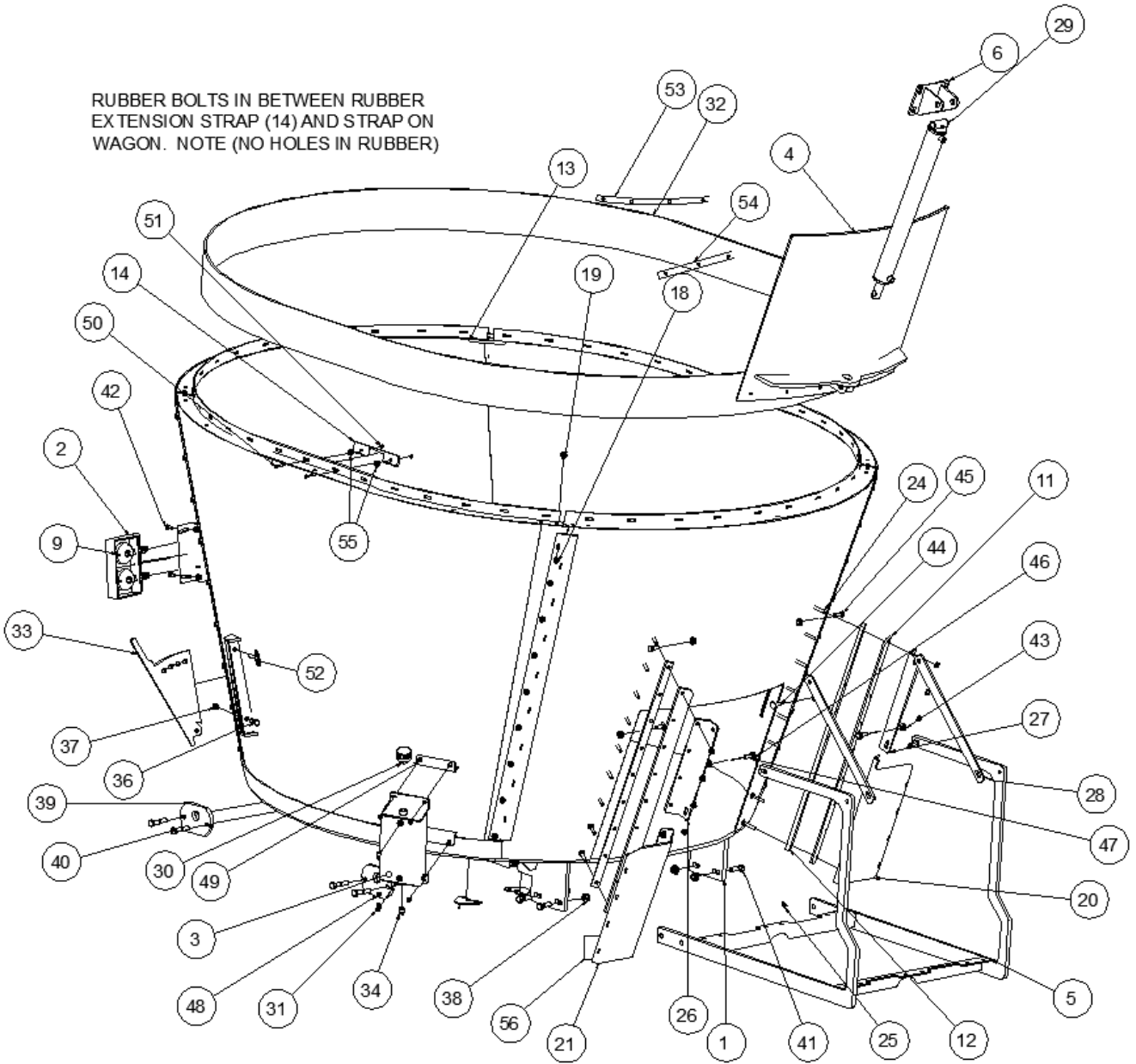


NOTICE: Immediately replace all worn or damaged decals. Please supply the unit's Serial Number with decal part number when ordering.

VM4020, 5020 & 6020 MIXER TUB ASSEMBLY

VM-200010

RUBBER BOLTS IN BETWEEN RUBBER
EXTENSION STRAP (14) AND STRAP ON
WAGON. NOTE (NO HOLES IN RUBBER)



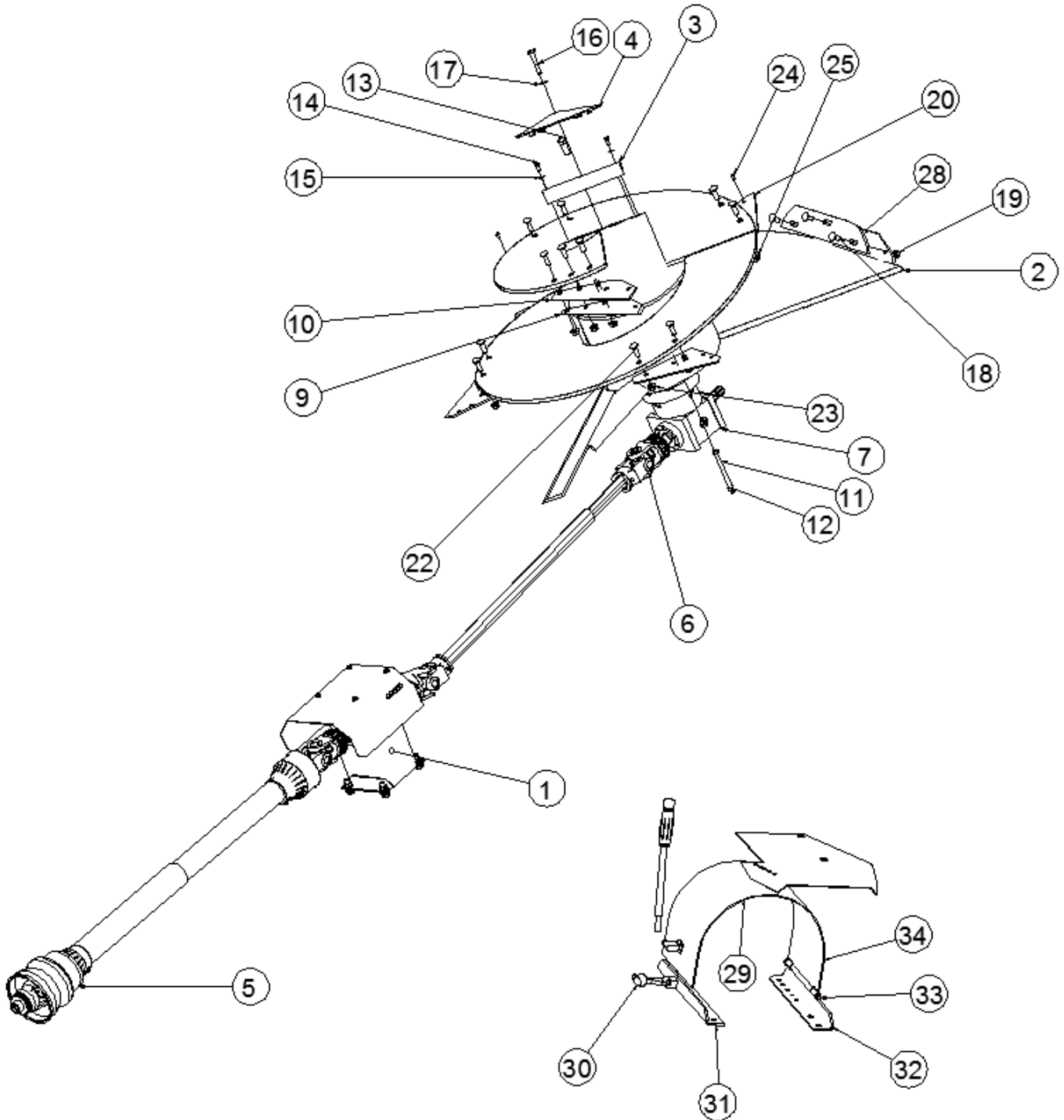
VM4020, 5020 & 6020 MIXER TUB ASSEMBLY

ITEM	QTY	PART NUMBER	DESCRIPTION
1	1	0-700626	TUB ASSEMBLY, FRONT DISCHARGE, BOLTED TUB, COMER, 5020
	1	0-700625	TUB ASSEMBLY, FRONT DISCHARGE, MECH DRIVE, COMER, 4020
	1	0-700673	TUB ASSEMBLY, FRONT DISCHARGE, MECH DRIVE, COMER, 6020
2	2	0-700300	LIGHT KIT BRACKET, BOLT-ON, HOLDS TWO LIGHTS
3	1	0-700351	OIL RESERVOIR, MULTI SCREW
4	1	0-700506	DISCHARGE DOOR MS4020, 5020, 725, 875, 1050
	1	0-700676	DISCHARGE DOOR VM6020
5	1	0-700387	FRONT CONVEYOR CRADDLE, FRONT DISCHARGE
6	1	0-700381	DISCHARGE DOOR CYLINDER BRKT
	1	0-700578	UPPER CYLINDER BRACKET, V875, V1050, V5020
9	4	10050-0010	LIGHT KIT FOR AG EQUIPMENT, W/ 30' HARNESS
11	2	0-700092	DOOR GUIDE STRAP 3/8 * 3 * 50
12	2	0-700093	DOOR SPACER STRAP 5/8 * 1 1/2 * 50
13	4	0-700369	SPLICE PLATE, 1/2 * 3 * 7, MULTI SCREW
14	26	0-700372	RUBBER EXTENSION STRAP, 1/4 * 2 * 12
18	40	71WC2-0080	1/2-13 FLANGE LOCKNUT, ZP
19	36	70CC5-0810	1/2-13 * 1 1/4 CARRIAGE BOLT, GRD 5, ZP
	30	70CC9-0812	1/2-13 * 1 1/2 CARRIAGE BOLT, GRD L9, ZP
20	1	0-700405-L	FRONT DISCHARGE DOOR SHIELD LH, 12 GA * 13 * 27 1/2
21	1	0-700405-R	FRONT DISCHARGE DOOR SHIELD RH, 12 GA * 13 * 27 1/2
24	10	70CC5-0820	1/2-13 * 2 1/2 CARRIAGE BOLT, GRD 5, ZP
	8	70CC9-0820	1/2-13 * 2 1/2 CARRIAGE BOLT, GRD L9, ZP
25	38	71WC2-0080	1/2-13 FLANGE LOCKNUT, ZP
26	1	0-700393-R	CONVEYOR HANGER, 3/8 * 5 1/2 * 21 3/4
27	1	0-700393-L	CONVEYOR HANGER, 3/8 * 5 1/2 * 21 3/4
28	2	0-700394	CONVEYOR KNEEBRACE, 3/8 * 2 * 27 1/2
29	1	33E00-2530	HYD CYLINDER, 2 1/2 * 30, SAE #8 PORTS
30	1	26SPG-0001	FILLER CAP, PLANETARY RESERVOIR
31	3	33HT4290-6-4	3/8 ID HOSE BARB TO 90 DEG ELBOW 1/4-NPT MALE PIPE
32	1	960B0-0800-000	2 PLY 220, 3/8 * 8 WIDE 33'-6"
	1	960B0-1200-000	2 PLY 220, 3/8 * 12 WIDE 35'
33	2	0-700379	HAY RESISTOR PLATE 1/2 * 11 5/8 * 18
34	1	33HT5406-P-12	3/4-NPT MALE HEX HEAD PLUG
36	2	70HC5-1020	5/8-11 * 2 1/2 HHCS, GRD 5, ZP
37	2	71UC2-0100	5/8-11 TOP LOCKNUT, ZP
38	12	71WC2-0120	3/4-10 FLANGE LOCKNUT, ZP
39	8	0-700313	WEIGH BAR BRACKET FOR SRM 3/4 * 6 * 8
40	8	70HC5-1228	3/4-10 * 3 1/2 HHCS, GRD 5, ZP
41	4	70HC5-1220	3/4-10 * 2 1/2 HHCS, GRD 5, ZP
42	4	70HC5-0808	1/2-13 * 1 HHCS, GRD 5, ZP
43	6	71WC2-0100	5/8-11 FLANGE LOCKNUT, ZP
44	2	70CC5-1014	5/8-11 * 1 3/4 CARRIAGE HD, GRD 5, ZP
45	2	70HC5-1014	5/8-11 * 1 3/4 HHCS, GRD 5, ZP
46	2	70HC5-1016	5/8-11 * 2 HHCS GRD 5, ZP
47	2	72FH0-0100	5/8 FLAT WASHER, ZP
48	4	71WC2-0060	3/8-16 FLANGE LOCKNUT, ZP
49	4	70HC5-0608	3/8-16 * 1 HHCS, GRD 5, ZP
50	2	70HC5-0512	5/16-18 * 1 1/2 HHCS, GRD 5, ZP
51	2	71UC2-0050	5/16-18 TOP LOCKNUT, ZP
52	2	73D00-1029	BALL, SPRING PIN, 5/8 DIA * 2 1/2
53	1	0-700390	FRONT DOOR SEAL STRAP 7 GA * 1 1/2 * 38 11/16
54	1	40002-0239	RUBBER SEAL TS DOOR, 2 1/8 * 38 5/8
55	104	72FH0-0050	5/16 FLAT WASHER, ZP
56	1	0-700441	FOLD UP EXTENSION RUBBER SEAL, 1/8 RED BACKED RUBBER * 9 * 9

**1000 RPM PTO DRIVELINES, TRANSER BOX,
SCREW AND OPTIONAL 2-SPEED GEARBOX**

VM-200020

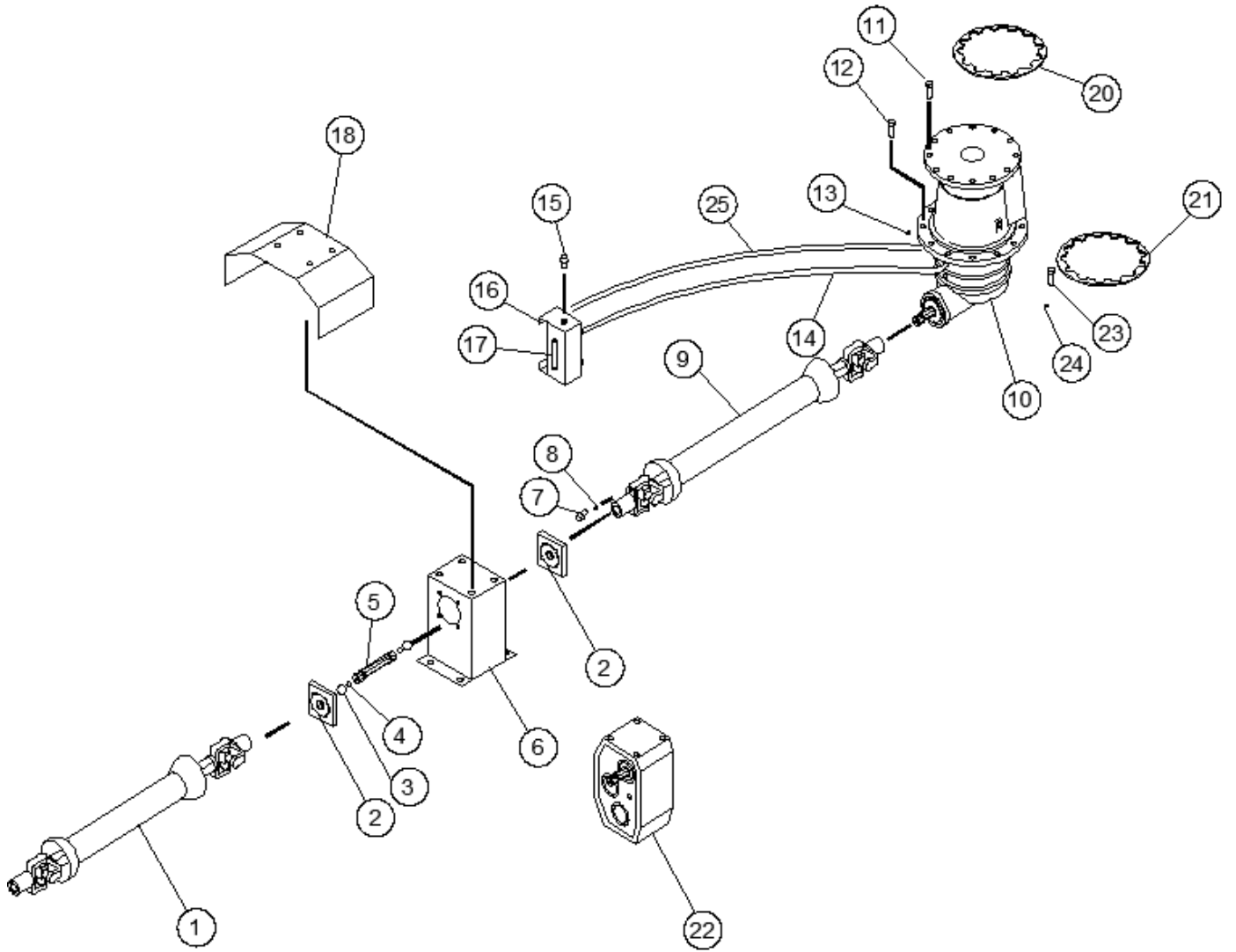
In order to have proper shear protection, use only genuine
Schuler replacement shear bolts.



**1000 RPM PTO DRIVELINES, TRANSER BOX,
SCREW AND OPTIONAL 2-SPEED GEARBOX**

ITEM	QTY	PART NUMBER	DESCRIPTION
1	1	VMMDL-1120	SINGLE SPEED DRIVE FOR PLANETARY, MS VERTICAL MIXERS
	1	VMMDL-1125	TWO-SPEED DRIVE FOR PLANETARY, 1.0-1.5 RATIO, 550, 750 & 725
2	1	0-700684	SCREW ASSY, MECH DRIVE, PGA3003 COMER, 5020 & 875
	1	0-700621	SCREW ASSY, MECH DRIVE, COMER, 5020 & 875, 2 1/4 TURNS
	1	0-700620	SCREW ASSY, MECH DRIVE, COMER, 4020 & 725, 1 7/8 TURN
	1	0-700713	SCREW ASSY, MECH DRIVE, COMER, 6020 , 2 1/4 TURNS
3	1	0-700471	CAP ANGLE, BOLT-ON,16" AUGER TUBE
4	1	0-700475	SCREW CAP FOR MULTI SCREW,16" AUGER TUBE
5	1	25B06-1128	PTO COMPLETE, 1 3/8-21 & 1 3/4-20, SIZE 6, CV
	1	25B08-0050	PTO COMPLETE, 1000 RPM, 1 3/8-21 & 1 3/4-20, SIZE 8, CV
	1	25B08-0051	PTO COMPLETE, 1000 RPM, 1 3/4-20 & 1 3/4-20, SIZE 8, CV
	1	25B06-1132	PTO COMPLETE, 1 3/4-20 & 1 3/4-20, SIZE 6, CV
6	1	25B06-1135	PTO, 1 3/4-20 & 1 3/4-20, 2000 NM SHEAR SIZE 6, FOR COMER
7	1	26CPG-3241	COMER PGA 1603 (TOTAL 25.89:1 RATIO 4 GEAR) CHINA
	1	26CPG-3248	COMER PGA-3003 (29.4:1) RATIO
9	1	0-700589	SMALL BACKING PLATE 1/2 * 6 * 13 3/8 / FITS PN#700377
11	12	70HC5-1024	5/8-11 * 3 HHCS, GRD 5, ZP
	12	70HM8-2480	M24-3.0 * 80 HHCS, CLASS 8.8, BLACK
12	12	71UC2-0100	5/8-11 TOP LOCKNUT, ZP
	12	71UM8-0240	M24-3.0 TOP NYLON INSERT LN CLASS 8.8, ZP
13	12	70HM8-1650	M16-2.0 * 50 HHCS, CLASS 8.8, ZP
	12	70HM8-2255	M22-1.5 * 55 HHCS CLASS 10.9, BLACK
14	2	70HC5-0608	3/8-16 * 1 HHCS, GRD 5, ZP
15	2	72FH0-0060	3/8 FLAT WASHER, ZP
16	1	70HC5-1028	5/8-11 * 3 1/2 HHCS GRD 5,, ZP
17	1	72FH0-0100	5/8 FLAT WASHER, ZP
18	3	70CC5-1014	5/8-11 * 1 3/4 CARRIAGE HD, GRD 5, ZP
19	3	71UC2-0100	5/8-11 TOP LOCKNUT, ZP
20	7	0-700377	SHORT CUTTING KNIFE, 6.0 MM MS6020, MS5020
	6	0-700377	SHORT CUTTING KNIFE, 6.0 MM MS4020
22	6	70CC5-1018	5/8-11 * 2 1/4 CARRIAGE BOLT, GRD 5, ZP
23	2	71WC2-0100	5/8-11 FLANGE LOCKNUT, ZP
24	1	70CC5-0610	3/8-16 * 1 1/4 CARRIAGE BOLT, GRD 5, ZP
25	1	71WC2-0060	3/8-16 FLANGE LOCKNUT, ZP
28	1	0-700162	EDGE DEFLECTOR, 1/2 * 4 * 21 3/4
29	1	0-700734	VM SIDE DISCHARGE TWO-SPEED DRIVE SHIELD ASSY
30	1	33HT5400-N-2-1.5	1/8-NPT MALE TO 1/8-NPT MALE PIPE NIPPLE 1.50" LONG
31	1	33HT5504-2	1/8-NPT FEMALE TO 1/8-NPT FEMALE ELBOW
32	1	33HT1404-2-2	STEEL PIPE SWIVEL ADAPTOR 1/8-27 NPTF x 1/8-27 NPSM
33	1	33NH1-0720	1/8-3000 PSI * 72, (2) 1/8-NPT MALE ENDS
34	1	74020-0000	1/8-NPT GREASE ZERK, STRAIGHT

**540 RPM PTO DRIVELINES, TRANSER BOX,
SCREW AND OPTIONAL 2-SPEED GEARBOX**
[VM-200030](#)

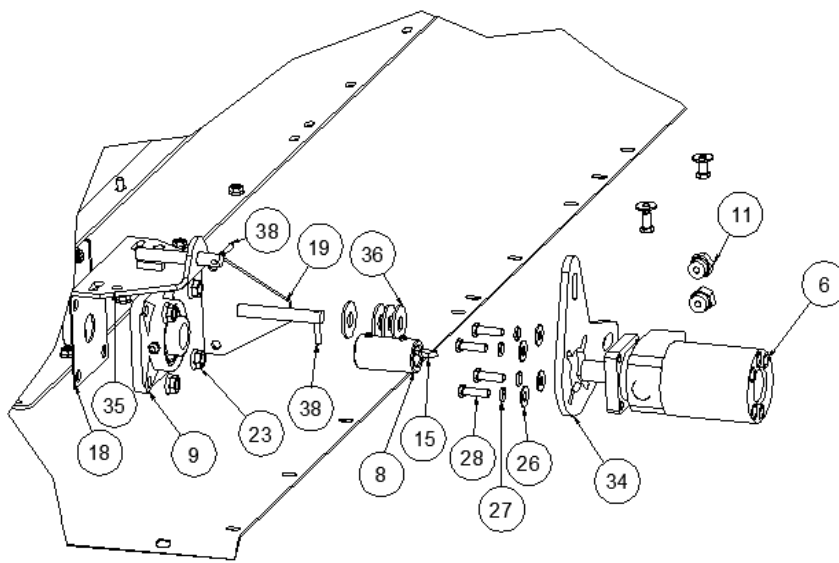
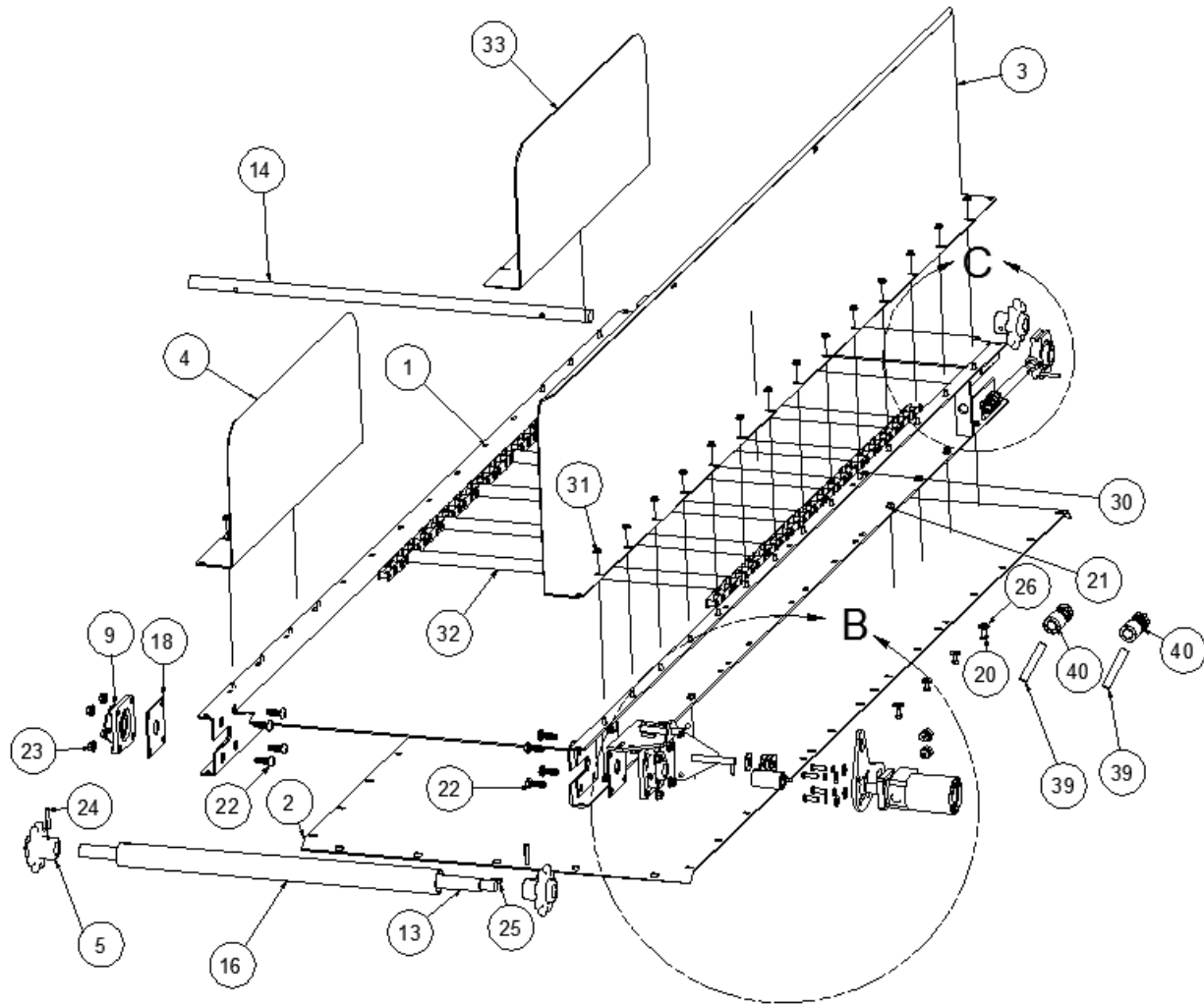


**540 RPM PTO DRIVELINES, TRANSER BOX,
SCREW AND OPTIONAL 2-SPEED GEARBOX**

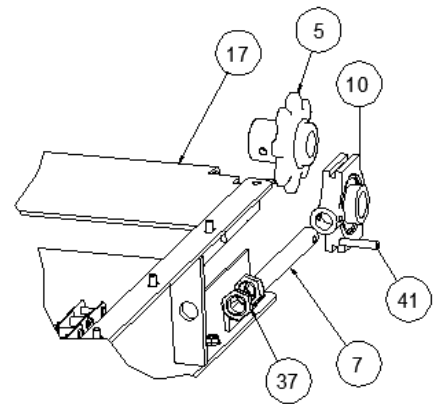
VM-000030

ITEM	QTY	PART NUMBER	DESCRIPTION
1	1	25B06-1138	PTO COMPLETE, 1 3/8-6 & 1 3/4-20, SIZE 6, CV 540 RPM
2	2	17400-1214	BRG 4-BOLT CAST, 1 3/4 B, RELUBE, 4 1/8 HOLE CENTER
3	12	72M28-0014	MACHINE BUSHING, 1 3/4 ID * 2 1/2 OD * 14 GA, ZP
4	2	28010-0014	LOCK COLLAR, 1 3/4 BORE, SINGLE SPLIT
5	1	26SCH-0218	SPLINED CARRIER SHAFT, 1 3/4-20 SPLINED BOTH ENDS * 18
6	1	0-700392	SINGLE SPEED ANGLED TRANSFER BOX
7	5	70HM8-0817	M8-1.25 * 55 HHCS CLASS 8.8
8	1	71UM8-0800	M8-1.25 TOP LOCK NUT GRD 8.8, ZP
9	1	25B06-1135	PTO, 1 3/4-20 & 1 3/4-20, 2000 NM SHEAR SIZE 6, FOR COMER
10	1	26CPG-3238	COMER PGA 1602 540 RPM (TOTAL 13.4:1 RATIO) CHINA
11	15	70HM8-1650	M16-2.0 * 50 HHCS, CLASS 8.8, ZP
12	12	70HC5-1024	5/8-11 * 3 HHCS, GRD 5, ZP
13	12	71UC2-0100	5/8-11 TOP LOCKNUT, ZP
14	1	33PHL-0375	3/8 LOW PRESSURE HOSE 300 PSI (NO ENDS)
15	1	26SPG-0001	FILLER CAP, PLANETARY RESERVOIR
16	1	0-700351	OIL RESERVOIR, MULTI SCREW
17	1	7406T-0000	3/8 ID CLEAR VINYL TUBING
18	1	0-700614	TRANSFER BOX PTO COVER 10 GA * 18 * 26
20	1	0-700645	SCREW SHIM FOR 1603 COMER ,12 GA * 13 3/4 DIA.
21	2	0-700476	PLANETARY ADAPTOR PLATE 3/4 * 11 1/2 * 23
22	1	26S24-5367	GEARBOX 2-SPEED, 1:5 TO 1:1 WITH 1 3/4-20 INPUT AND OUTPUT
23	12	70HM8-2480	M24-3.0 * 80 HHCS, CLASS 8.8, BLACK
24	12	71UM8-0240	M24-3.0 TOP NYLON INSERT LN CLASS 8.8, ZP
25	1	33PHL-0500	1/2 LOW PRESSURE HOSE 250 PSI
26	1	33HT5400-N-2-1.5	1/8-NPT MALE TO 1/8-NPT MALE PIPE NIPPLE 1.50" LONG
27	1	33HT5504-2	1/8-NPT FEMALE TO 1/8-NPT FEMALE ELBOW
28	1	33HT1404-2-2	STEEL PIPE SWIVEL ADAPTOR 1/8-27 NPTF x 1/8-27 NPSM
29	1	33NH1-0720	1/8-3000 PSI * 72, (2) 1/8-NPT MALE ENDS
30	1	74020-0000	1/8-NPT GREASE ZERK, STRAIGHT

DUAL DISCHARGE CONVEYOR 119" & 101"
VM-200040



DETAIL B



DETAIL C

DUAL DISCHARGE CONVEYOR 119" & 101"

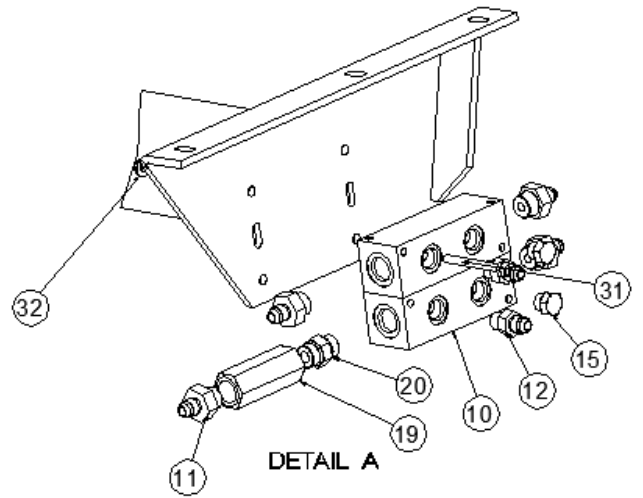
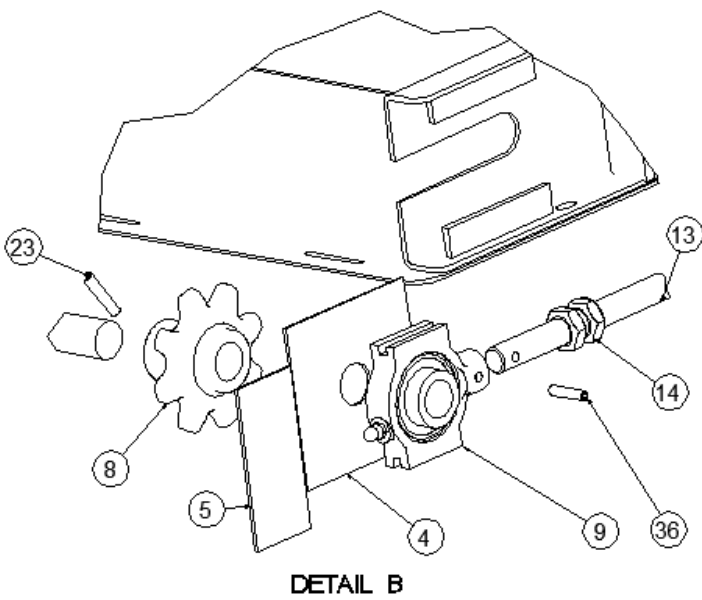
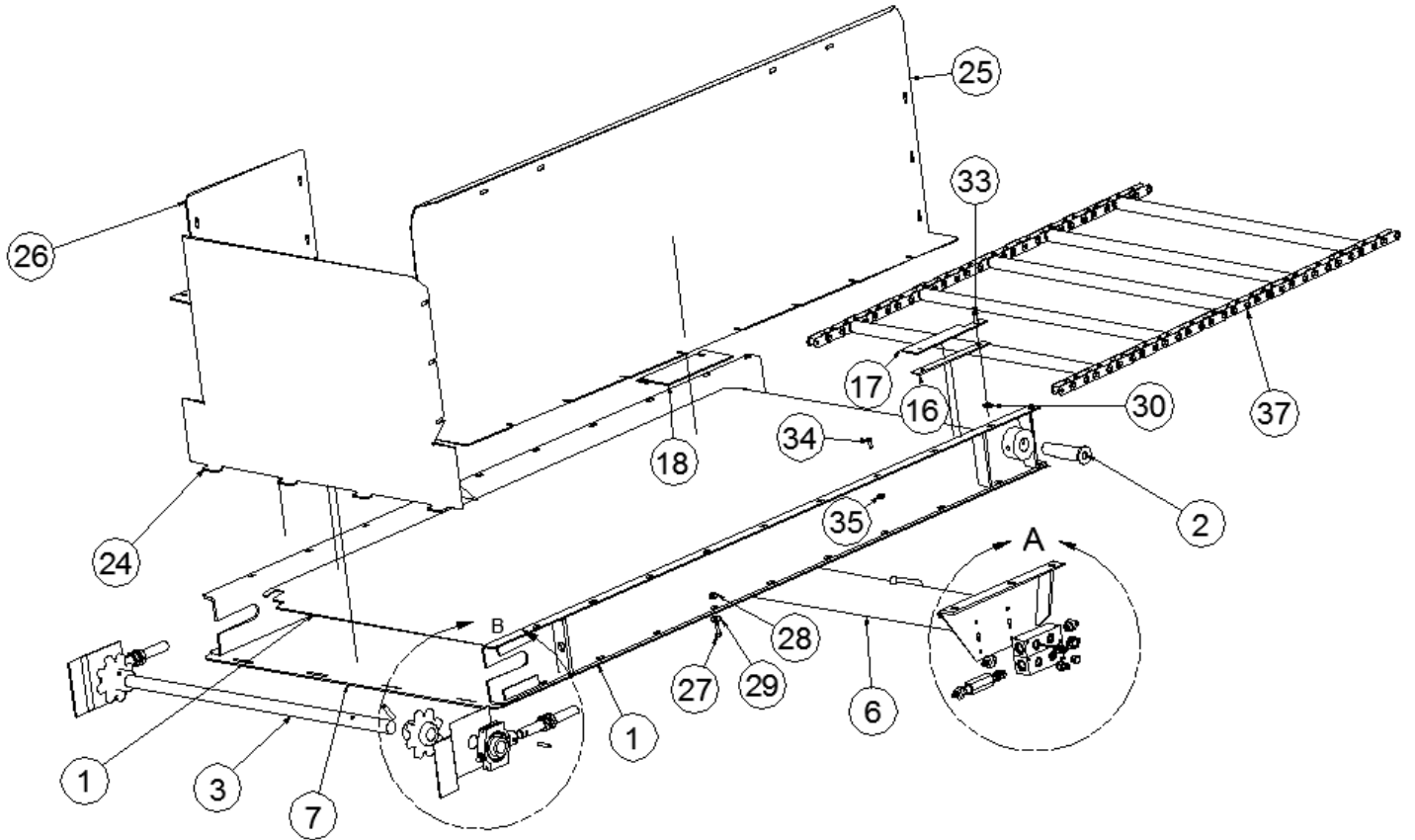
ITEM	QTY	PART NUMBER	DESCRIPTION
1	1	0-700421	FRONT DISCHARGE DUAL DIRECTION CONVEYOR, 119 OAL
1	1	0-700567	FRONT DISCHARGE DUAL DIRECTION CONVEYOR, 101 OAL
2	1	0-700423	DUAL DISCHARGE CONVEYOR BOTTOM 10 GA * 39 1/2 * 108
2	1	0-700565	DUAL DISCHARGE CONVEYOR BOTTOM 10 GA * 39 1/2 * 92
3	1	0-700429	DUAL DISCHARGE FRONT SHIELD , 12 GA * 23 3/4 * 117
3	1	0-700566	DUAL DISCHARGE FRONT SHIELD , 12 GA * 23 3/4 * 101
4	1	0-700430	DUAL DISCHARGE REAR SHIELD , 12 GA * 17 3/4 * 36 1/2
5	4	16C10-0810	SPKT CAST, 8T, 1 1/4 B, 3/8 PH
6	1	33BAG-0000	HYD MOTOR, 11.9 CU IN
7	2	70FC5-1464	7/8-9 * 8, THREADED STUD WITH PINHOLE, B7
8	1	26000-1000	SHAFT COUPLER, 1 5/8 OD * 1 ID * 3 OAL, 1/4 KW PN #511450
9	2	17400-2210	BRG 4-BOLT CAST, 1 1/4 B, III LIP SEAL, 3 5/8 HOLE CENTER
10	2	17700-0010	BRG TAKE UP , 1 1/4 BORE
11	2	33HT6400-6-10	9/16-18 37^ JIC TO 7/8-14 O-RING
13	1	0-700557	SHAFT, FOLD UP EXT DRIVE, 1 1/4 CRR * 43 5/8-CA557 CHAIN
14	1	0-700416	SHAFT, FRONT CONVEYOR IDLER, 1 1/4 CRR * 40 5/8 CA557 CHAIN
15	1	33BA0-0008	WOODRUFF KEY, AB, AC, AE MOTOR
16	1	0-700413	SHAFT TUBE COVER 2 SCH 40 PVC PIPE * 32 3/8
17	1	0-700422	FRONT DUAL DISCHARGE SLIDER
18	1	0-700404	DRIVE SHAFT SLOT COVER , 12 GA * 4 5/8 * 4 5/8
19	1	0-700548	HYD MOTOR MOUNT, BOLT-ON
20	26	70HC5-0606	3/8-16 * 3/4 HHCS, GRD 5, ZP
21	26	71WC2-0060	3/8-16 FLANGE LOCKNUT, ZP
22	8	70BH5-0812	1/2-13 * 1 1/2 BUTTON HD SOCKET CAP SCREW, ZP, GRD 5
23	8	71WC2-0080	1/2-13 FLANGE LOCKNUT, ZP
24	4	73S00-0616	3/8 * 2 SPIROL PIN, HBK
25	1	0-130212	KEY, 1/4 CD * 1 1/4
26	28	72FH0-0060	3/8 FLAT WASHER, ZP
27	4	72LH0-0060	3/8 SPLIT LOCK WASHER, ZP
28	4	70HC5-0610	3/8-16 * 1 1/4 HHCS, GRD 5, ZP
29	34	72FH0-0050	5/16 FLAT WASHER, ZP
30	34	70HC5-0506	5/16-18 x 3/4 HHCS, GRADE 5
31	34	71WC2-0050	5/16-18 FLANGE LOCKNUT, ZP
32	1	0-700397	FRONT DISCHARGE CONVEYOR CHAIN, CA557
	2	23x81-090A	81X CONVEYOR CHAIN, 90 PITCH INC CL, 22 ATT (2 PER ASSY)
33	1	0-700431	DUAL DISCHARGE REAR SIDE SHIELD , 12 GA * 17 3/4 * 36 1/2
34	1	0-700453	CONVEYOR MOTOR MOUNT 3/8 * 8 * 8
35	1	0-700454	CONVEYOR MOTOR MOUNT ASSY
36	8	72M10-0014	MACHINE BUSHING, 5/8 ID * 1 1/8 OD * 14 GA, ZP
37	2	71JC2-0140	7/8-9 JAM NUT, ZP
38	2	73E00-0410	1/4 * 1 1/4 SPRING PIN, ZP
39	2	33PH2-1621	3/8-3000 PSI * 165, 9/16-18 STRAIGHT BOTH ENDS
40	2	33QPC-4000	PIONEER COUPLER, MALE TIP 3/4 O/R
41	2	73S00-0512	5/16 * 1 1/2 SPIROL PIN, HBK
42	2	17951-1210	BRONZE BUSHING W/ FLANGE, 1 1/2 OD * 1 1/4 ID * 1 3/4
DISCHARGE CONVEYOR CHAIN PARTS			
1		700447	FLIGHT,VM CONVEYOR FRONT DISCHARGE W/ 4-23C01-00CL,CA557 CL
1		23C01-00CL	CA-557 CL
1		23C01-00HL	CA-557 OL
1		23C01-00RL	CA-557 ROLLER LINK
81X CHAIN PARTS			
		23X81-00CL	81X CONNECTOR LINK
		23X81-00HL	81X OFFSET LINK
		23X81-00RL	81X ROLLER LINK
		0-700701	CONVEYOR CHAIN FLIGHT, 1 1/4 * 1 1/4 * 1/4 * 28 1/4

DUAL DISCHARGE CONVEYOR 119" & 101"

ITEM	QTY	PART NUMBER	DESCRIPTION
1	1	0-700725	FRONT DIS DUAL DIRECTION CONVEYOR, 101 OAL, 81X CHAIN
1	1	0-700726	FRONT DUAL DISCHARGE CONVEYOR, 119 OAL, 81X CHAIN
33	1	0-700579-L	DUAL DISCHARGE REAR SHIELD LH, 12 GA * 17 3/4 * 24
4	1	0-700579-R	DUAL DISCHARGE REAR SHIELD RH, 12 GA * 17 3/4 * 24
5	4	16C30-0610	SPKT 81XB6, 6T, 1 1/4 B, 3/8 PH
6	1	33BAM-0000	HYD MOTOR, 18.0 CU IN
13	1	0-700702	SHAFT, FOLD UP EXT DRIVE, 1 1/4 CRR * 43 3/4, 81X CHAIN
14	1	0-700703	SHAFT, FRONT CONVEYOR IDLER, 1 1/4 CRR * 40 3/4, 81X CHAIN
17	1	0-700724	FRONT DUAL DISCHARGE SLIDER, 81X CHAIN
24	4	73S00-0622	3/8 * 2 3/4 SPIROL PIN, HBK
32	2	23X81-090A	81X CONVEYOR CHAIN, 90 PITCH INC CL, 22 ATT (2 PER ASSY)
42	2	17951-1210	BRONZE BUSHING W/ FLANGE, 1 1/2 OD * 1 1/4 ID * 1 3/4

DISCHARGE CONVEYOR

VM-200050

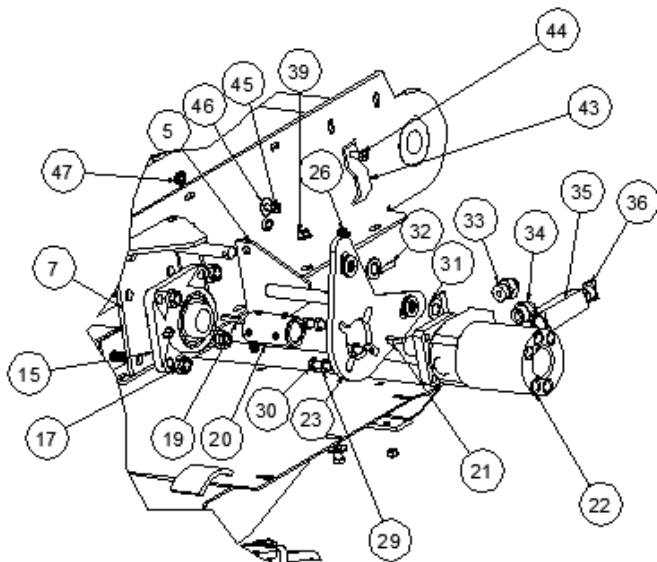
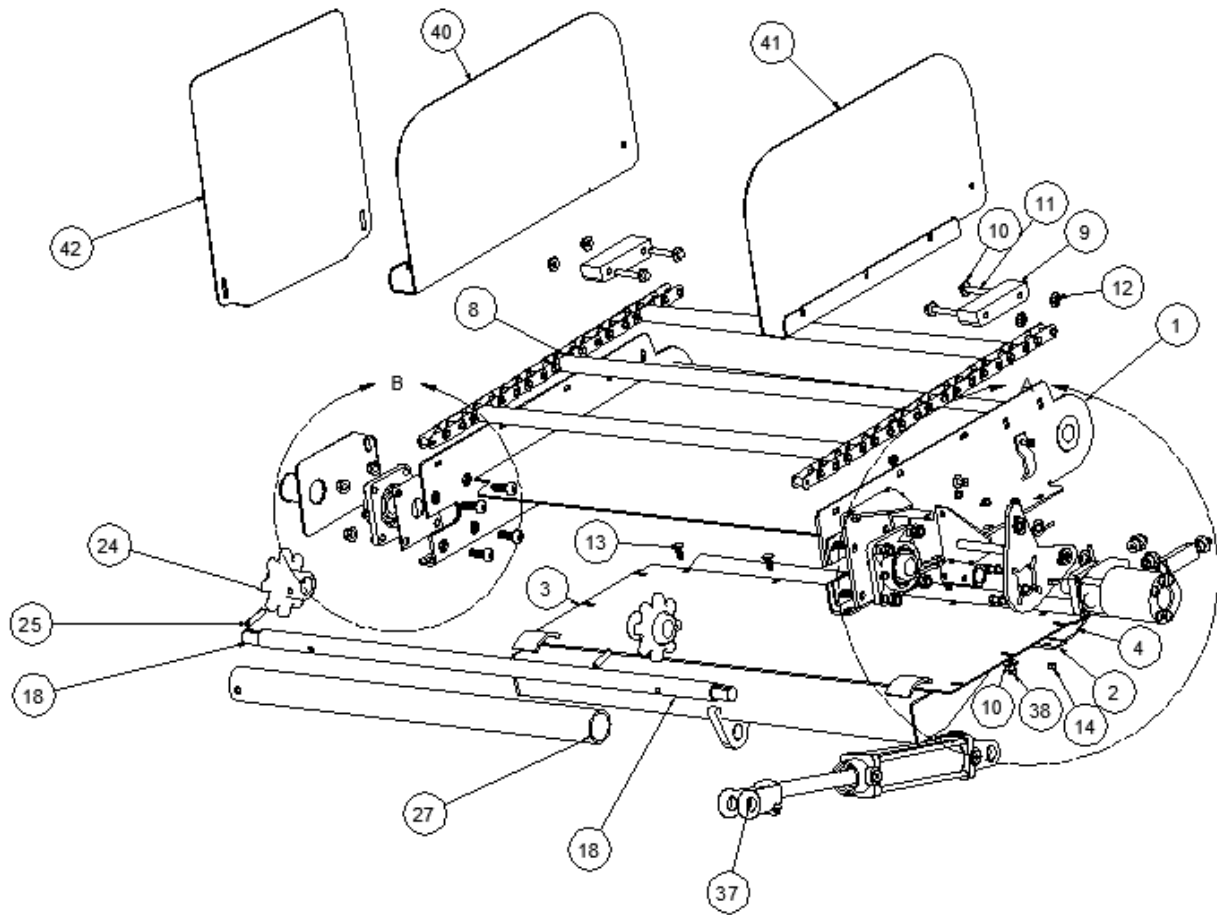


DISCHARGE CONVEYOR

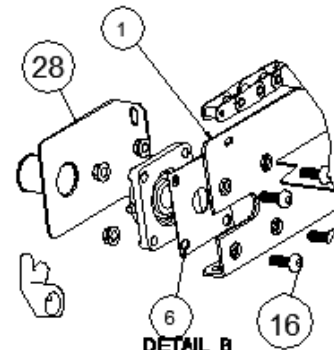
ITEM	QTY	PART NUMBER	DESCRIPTION
1	1	0-700398	FRONT DISCHARGE CONVEYOR SINGLE DIRECTION CA 557
	1	0-700696	FRONT DISCHARGE CONVEYOR SINGLE DIRECTION 81X CHAIN
2	2	0-700412	CONVEYOR EXTENTION PIN
3	1	0-700416	SHAFT, FRONT CONVEYOR IDLER, 1 1/4 CRR * 40 5/8 CA557 CHAIN
	1	0-700703	SHAFT, FRONT CONVEYOR IDLER, 1 1/4 CRR * 40 3/4 , 81X CHAIN
4	2	0-700418	CONVEYOR SLOT COVER 1/8 UHMW * 5 1/2 * 5 1/2
5	2	0-700419	CONVEYOR SLOT COVER 1/8 UHMW * 2 1/2 * 5 1/4
6	1	0-700549	LOWER LIFT BRACKET ASSY FOR CONVEYOR TO LAY FLAT
	1	0-700733	LOWER LIFT BRACKET ASSY FOR CONVEYOR,TWO CYLINDERS
7	1	0-700554	FRONT DISCHARGE CONVEYOR BOTTOM 10 GA * 39 1/2 * 78
8	2	16C10-0810	SPKT CAST, 8T, 1 1/4 B, 3/8 PH
		16C30-0610	SPKT 81XB6, 6T, 1 1/4 B, 3/8 PH
9	2	17700-0010	BRG TAKE UP , 1 1/4 BORE
10	2	33F00-1209	HYD HEADER MANIFOLD,(2) 3/4 O/R PORT,(2) 9/16 O/R PORT
11	1	33HT6400-6-8	9/16-18 ORFS TO 3/4-16 O-RING 37^ JIC
12	4	33HT3400-6	9/16-18, 37* JIC TO 9/16-18 O-RING
13	2	70FC5-1464	7/8-9 * 8, THREADED STUD WITH PINHOLE, B7
14	4	71JC2-0140	7/8-9 JAM NUT, ZP
15	2	33HT6408-8	3/4-16 O-RING HEX HEAD PLUG
16	1	0-700438	SLIDE STRAP SPACER , 7 GA * 1 * 10
17	1	0-700439	SLIDE STRAP CAP , 7 GA * 2 * 10
18	1	0-700434	CHAIN COVER , 12 GA * 5 * 11 1/2
19	1	33L00-1014	CHECK VALVE WITH RESTRICTOR, 1/16 ORIFICE, #8 O-RING PORTS
20	1	33HT6403-8-8	3/4-16 MALE O-RING TO 3/4-16 MALE O-RING UNION
23	2	73S00-0616	3/8 * 2 SPIROL PIN, HBK
	2	73S00-0622	3/8 * 2 3/4 SPIROL PIN, HBK
24	1	0-700640	FRONT CONVEYOR BACK SHIELD ASSY, CA557 CHAIN
		0-700697	FRONT CONVEYOR BACK SHIELD ASSY FOR 81X CHAIN
25	1	0-700638	FRONT DISCHARGE SMALL SHIELD ,12 GA * 15 1/4 * 16
26	1	0-700639	FRONT SHIELD CONVEYOR , 12 GA * 28 1/4 * 69
27	20	70HC5-0608	3/8-16 * 1 HHCS, GRD 5, ZP
28	20	71WC2-0060	3/8-16 FLANGE LOCKNUT, ZP
29	20	72FH0-0060	3/8 FLAT WASHER, ZP
30	21	72FH0-0050	5/16 FLAT WASHER, ZP
31	4	70HC5-0420	1/4-20 * 2 1/2 HHCS, GRD 5, ZP
32	4	71WC2-0040	1/4-20 FLANGE LOCKNUT, ZP
33	2	70HC5-0510	5/16-18 * 1 1/4 HHCS, GRD 5, ZP
34	17	70HC5-0506	5/16-18 * 3/4 HHCS, GRD 5, ZP
35	18	71WC2-0050	5/16-18 FLANGE LOCKNUT, ZP
36	2	73S00-0512	5/16 * 1 1/2 SPIROL PIN, HBK
37	1	0-700397	FRONT DISCHARGE CONVEYOR CHAIN, CA557
	2	23X81-090A	81X CONVEYOR CHAIN, 90 PITCH INC CL, 22 ATT (2 PER ASSY)
38	1	33HT6801-6-8	9/16-18 TO 3/4-16 O-RING 90^ STR THREADED ELBOW CONN

FOLD-UP EXTENSION TO LAY FLAT FOR CONVEYOR, 25" LONG

[VM-200060](#)



DETAIL A
SCALE 1/4



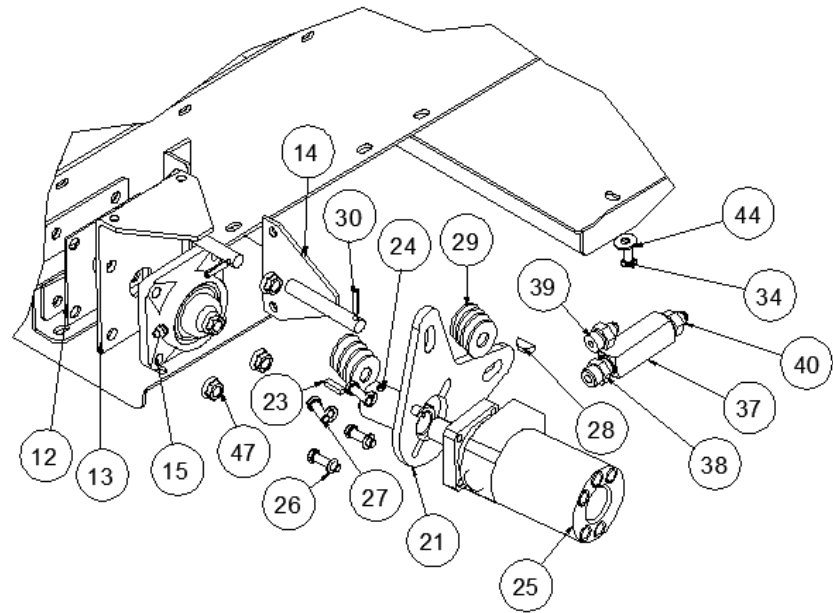
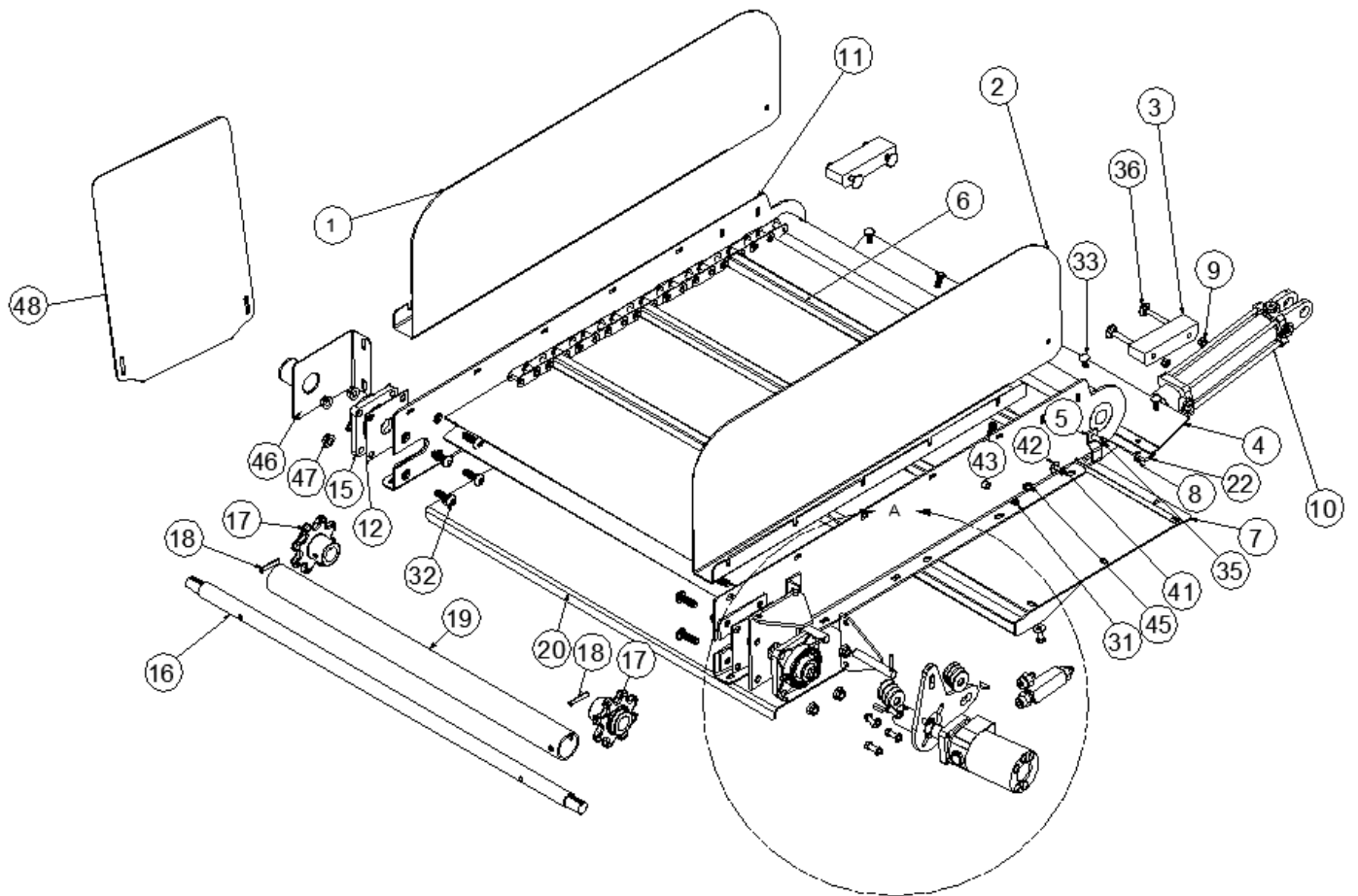
DETAIL B
SCALE 1/4

FOLD-UP EXTENSION TO LAY FLAT FOR CONVEYOR, 25" LONG

ITEM	QTY	PART NUMBER	DESCRIPTION
1	1	0-700474	CONVEYOR ASSY, 25 IN LONG FOLD UP
	1	0-700705	CONVEYOR ASSY FOR 81X CHAIN, 25 IN LONG FOLD UP
2	1	0-700598	SWING SHIELD HINGE SPACER, 1/4 * 1 1/4 * 3/4
3	1	0-700470	FOLD UP EXTENSION BOTTOM ASSY FOR CONVEYOR TO LAY FLAT
4	1	0-700736	FOLD UP CONVEYOR SEAL 1/8 UHMW * 6 * 35 1/2
5	1	0-700548	HYD MOTOR MOUNT, BOLT-ON
6	1	0-700404	DRIVE SHAFT SLOT COVER , 12 GA * 4 5/8 * 4 5/8
7	1	0-700403	HYD MOTOR MOUNT
8	1	0-700397	FRONT DISCHARGE CONVEYOR CHAIN, CA557
	20	0-700701	CONVEYOR CHAIN FLIGHT, 1 1/4 * 1 1/4 * 1/4 * 28 1/4
	2	23X81-090A	81X CONVEYOR CHAIN, 90 PITCH INC CL, 22 ATT (2 PER ASSY)
9	2	0-700417	CHAIN BLOCK 1 1/4 UHMW * 1 3/4 * 6
10	18	72FH0-0060	3/8 FLAT WASHER, ZP
11	4	70HC5-0620	3/8-16 * 2 1/2 HHCS, GRD 5, ZP
12	5	71UC2-0060	3/8-16 TOP LOCKNUT, ZP
13	5	70CC5-0508	5/16-18 * 1 CARRIAGE BOLT, GRD 5, ZP
14	5	71UC2-0050	5/16-18 TOP LOCKNUT, ZP
15	2	17400-2210	BRG 4-BOLT CAST, 1 1/4 B, III LIP SEAL, 3 5/8 HOLE CENTER
16	8	70BH5-0812	1/2-13 * 1 1/2 BUTTON HD SOCKET CAP SCREW, ZP, GRD 5
17	8	71WC2-0080	1/2-13 FLANGE LOCKNUT, ZP
18	1	0-700557	SHAFT, FOLD UP EXT DRIVE, 1 1/4 CRR * 43 5/8-CA557 CHAIN
	1	0-700702	SHAFT, FOLD UP EXT DRIVE, 1 1/4 CRR * 43 3/4, 81X CHAIN
19	1	0-130212	KEY, 1/4 CD * 1 1/4
20	1	26000-1000	SHAFT COUPLER, 1 5/8 OD * 1 ID * 3 OAL, 1/4 KW PN #511450
21	1	33BA0-0008	WOODRUFF KEY, AB, AC, AE MOTOR
22	1	33BAM-0000	HYD MOTOR, 18.0 CU IN
	1	33BAG-0000	HYD MOTOR, 11.9 CU IN
23	1	0-700453	CONVEYOR MOTOR MOUNT 3/8 * 8 * 8
24	2	16C10-0810	SPKT CAST, 8T, 1 1/4 B, 3/8 PH
	2	16C30-0610	SPKT 81XB6, 6T, 1 1/4 B, 3/8 PH
25	2	73S00-0616	3/8 * 2 SPIROL PIN, HBK
	2	73S00-0622	3/8 * 2 3/4 SPIROL PIN, HBK
26	2	74040-0000	1/4-28 STRAIGHT GREASE ZERK
27	1	0-700413	SHAFT TUBE COVER 2 SCH 40 PVC PIPE * 32 3/8
28	1	0-700569	FOLD UP CONVEYOR SHAFT SHIELD
29	4	72LH0-0060	3/8 SPLIT LOCK WASHER, ZP
30	4	70HC5-0610	3/8-16 * 1 1/4 HHCS, GRD 5, ZP
31	8	72M10-0014	MACHINE BUSHING, 5/8 ID * 1 1/8 OD * 14 GA, ZP
32	2	73E00-0410	1/4 * 1 1/4 SPRING PIN, ZP
33	1	33HT6400-6-10	9/16-19 ORFS TO 7/8-14 O-RING 37* JIC
34	1	33HT6403-10-8	7/8-14 MALE O-RING TO 3/4-16 MALE O-RING NIPPLE
35	1	33L00-1015	CHECK VAVLE, 3/4 O-RING FEMALE/FEMALE
36	1	33HT6400-6-8	9/16-18 37^ JIC TO 7/8-14 O-RING
37	1	33E00-0206	HYD CYLINDER, 2 * 6 , SAE #8 O/R PORTS
38	10	70HC5-0608	3/8-16 * 1 HHCS, GRD 5, ZP
39	8	71WC2-0060	3/8-16 FLANGE LOCKNUT, ZP
40	1	0-700495-R	FOLD UP EXTENSION FRONT SHIELD RH, 12 GA * 16 * 26 3/8
41	1	0-700495-L	FOLD UP EXTENSION FRONT SHIELD LH, 12 GA * 16 * 26 3/8
42	1	0-700432	CONVEYOR PIVOT SHIELD , 12 GA * 16 * 21
43	1	0-700496	CLAMP FOR HYDRAULIC HOSES 7 GA * 1 * 3 1/2
44	1	70HC5-0508	5/16-18 * 1 HHCS, GRD 5, ZP
45	5	70HC5-0506	5/16-18 * 3/4 HHCS, GRD 5, ZP
46	6	72FH0-0050	5/16 FLAT WASHER, ZP
47	6	71WC2-0050	5/16-18 FLANGE LOCKNUT, ZP

FOLD UP EXTENSION TO LAY FLAT FOR CONVEYOR, 40" LONG

VM-200070



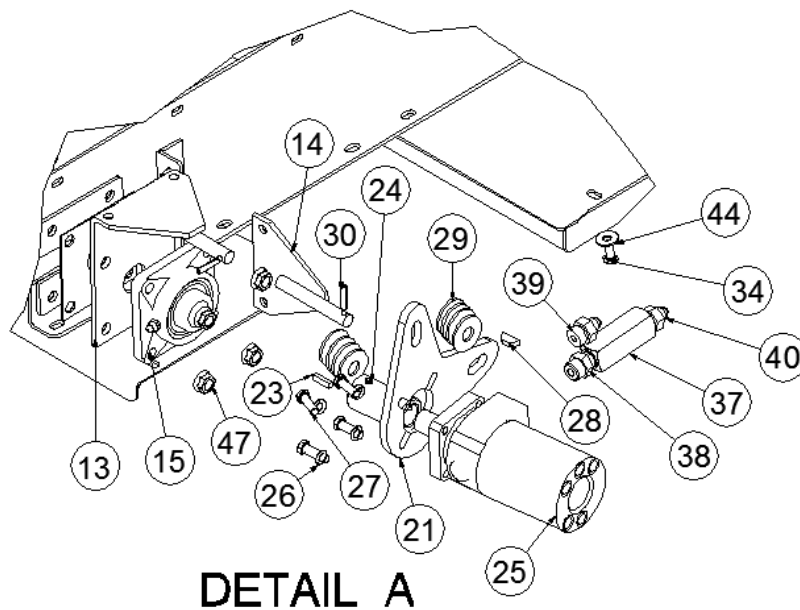
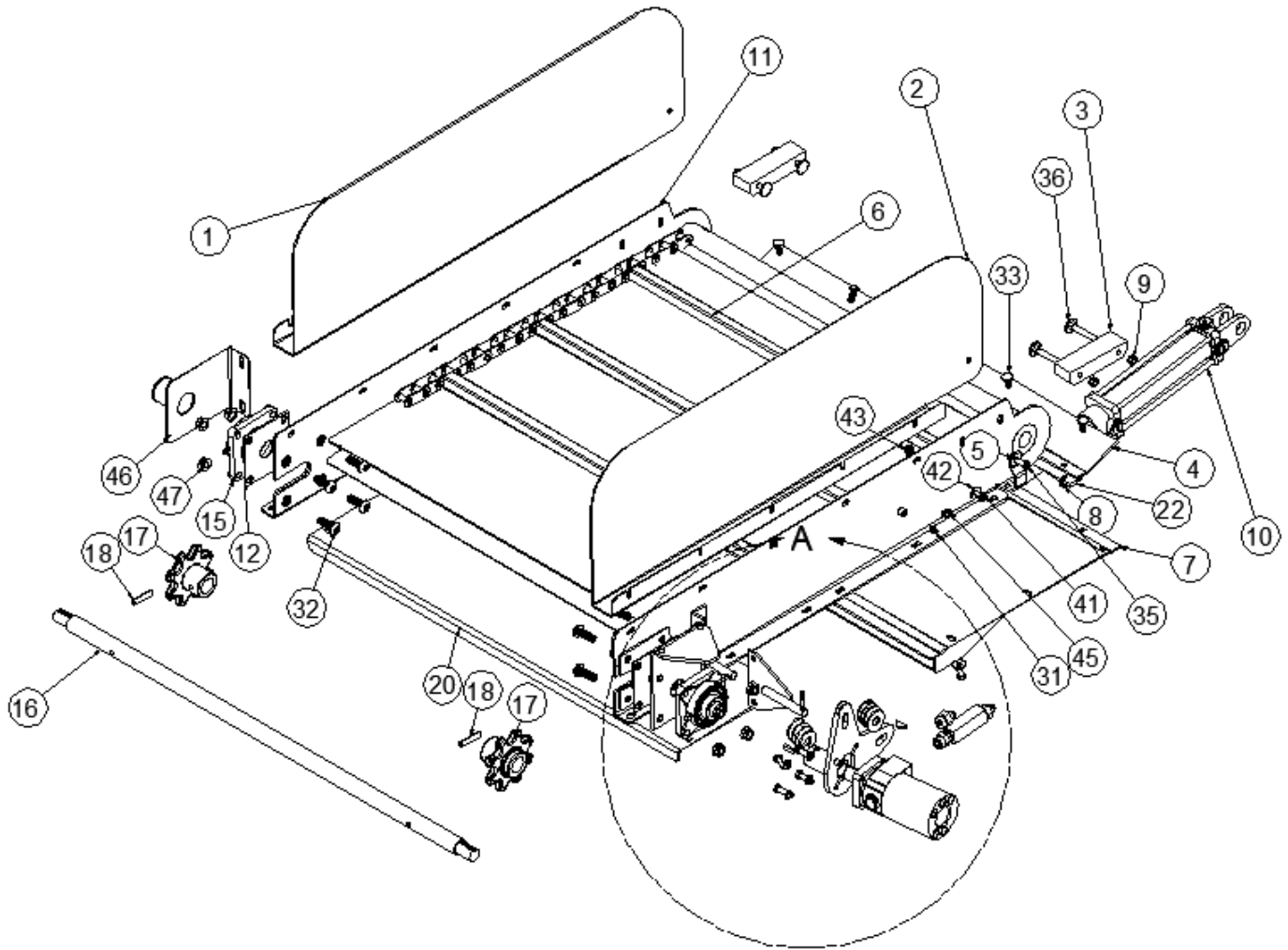
DETAIL A

FOLD UP EXTENSION TO LAY FLAT FOR CONVEYOR, 40" LONG

ITEM	QTY	PART NUMBER	DESCRIPTION
1	1	0-700409-R	FOLD UP EXT. FRONT SHIELD RH, 12 GA * 16 * 41
2	1	0-700409-L	FOLD UP EXT. FRONT SHIELD LH, 12 GA * 16 * 41
3	2	0-700417	CHAIN BLOCK 1 1/4 UHMW * 1 3/4 * 6
4	1	0-700736	FOLD UP CONVEYOR SEAL 1/8 UHMW * 6 * 35 1/2
5	1	0-700496	CLAMP FOR HYDRAULIC HOSES 7 GA * 1 * 3 1/2
6	1	0-700397	FRONT DISCHARGE CONVEYOR CHAIN, CA557
	22	0-700701	CONVEYOR CHAIN FLIGHT, 1 1/4 * 1 1/4 * 1/4 * 28 1/4
7	1	0-700550	FOLD UP EXT BOTTOM ASSY FOR CONVEYOR TO LAY FLAT
8	10	71UC2-0050	5/16-18 TOP LOCKNUT, ZP
9	5	71UC2-0060	3/8-16 TOP LOCKNUT, ZP
10	1	33E00-0208	HYD CYLINDER, 2 * 8, SAE #8 O/R PORTS
11	1	0-700473	CONVEYOR ASSY, 40 IN LONG FOLD UP
	1	0-700698	CONVEYOR ASSY, 40 IN LONG FOLD UP, FOR 81X CHAIN
12	1	0-700404	DRIVE SHAFT SLOT COVER , 12 GA * 4 5/8 * 4 5/8
13	1	0-700403	HYD MOTOR MOUNT
14	1	0-700548	HYD MOTOR MOUNT, BOLT-ON
15	2	17400-2210	BRG 4-BOLT CAST, 1 1/4 B, III LIP SEAL, 3 5/8 HOLE CENTER
16	1	0-700557	SHAFT, FOLD UP EXT DRIVE, 1 1/4 CRR * 43 5/8-CA557 CHAIN
	1	0-700702	SHAFT, FOLD UP EXT DRIVE, 1 1/4 CRR * 43 3/4, 81X CHAIN
17	2	16C10-0810	SPKT CAST, 8T, 1 1/4 B, 3/8 PH
	2	16C30-0610	SPKT 81XB6, 6T, 1 1/4 B, 3/8 PH
18	2	73S00-0616	3/8 * 2 SPIROL PIN, HBK
	2	73S00-0622	3/8 * 2 3/4 SPIROL PIN, HBK
19	1	0-700413	SHAFT TUBE COVER 2 SCH 40 PVC PIPE * 32 3/8
20	1	0-700469	4 FT OUTER CONVEYOR BOTTOM 10 GA * 12 * 38 7/8
	1	0-700680	4 FT OUTER CONVEYOR BOTTOM 10 GA * 17 3/4 * 38 7/8
21	1	0-700453	CONVEYOR MOTOR MOUNT 3/8 * 8 * 8
22	1	0-700598	SWING SHIELD HINGE SPACER, 1/4 * 1 1/4 * 34
23	1	130212	KEY, 1/4 CD * 1 1/4
24	1	26000-1000	SHAFT COUPLER, 1 5/8 OD * 1 ID * 3 OAL, 1/4 KW PN #511450
25	1	33BAG-0000	HYD MOTOR, 11.9 CU IN
	1	33BAM-000	HYD MOTOR, 18.0 CU IN
26	4	72LH0-0060	3/8 SPLIT LOCK WASHER, ZP
27	4	70HC5-0610	3/8-16 * 1 1/4 HHCS, GRD 5, ZP
28	1	33BA0-0008	WOODRUFF KEY, AB, AC, AE MOTOR
29	8	72M10-0014	MACHINE BUSHING, 5/8 ID * 1 1/8 OD * 14 GA, ZP
30	2	73E00-0410	1/4 * 1 1/4 SPRING PIN, ZP
31	2	74040-0000	1/4-28 STRAIGHT GREASE ZERK
32	8	70BH5-0812	1/2-13 * 1 1/2 BUTTON HD SOCKET CAP SCREW, ZP, GRD 5
33	5	70CC5-0508	5/16-18 * 1 CARRIAGE BOLT, GRD 5, ZP
34	10	70HC5-0608	3/8-16 * 1 HHCS, GRD 5, ZP
35	1	70HC5-0608	3/8-16 * 1 HHCS, GRD 5, ZP
36	4	70HC5-0620	3/8-16 * 2 1/2 HHCS, GRD 5, ZP
37	1	33L00-1015	CHECK VALVE, 3/4-O/RING FEMALE/FEMALE
38	1	33HT6403-10-8	7/8-14 MALE O-RING TO 3/4-16 MALE O-RING NIPPLE
39	1	33HT6400-6-10	9/16-18 37^ JIC TO 7/8-14 O-RING
40	6	33HT6400-6-8	9/16-18 ORFS TO 3/4-16 O-RING 37^ JIC
41	10	70HC5-0506	5/16-18 * 3/4 HHCS, GRD 5, ZP
42	1	72FH0-0050	5/16 FLAT WASHER, ZP
43	10	71WC2-0050	5/16-18 FLANGE LOCKNUT, ZP
44	18	72FH0-0060	3/8 FLAT WASHER, ZP
45	10	71WC2-0060	3/8-16 FLANGE LOCKNUT, ZP
46	1	0-700569	FOLD UP CONVEYOR SHAFT SHIELD
47	8	71WC2-0080	1/2-13 FLANGE LOCKNUT, ZP
48	1	0-700432	CONVEYOR PIVOT SHIELD , 12 GA * 16 * 21

**FOLD-UP EXTENSION TO LAY FLAT
FOR CONVEYOR, 50" LONG**

VM-200080

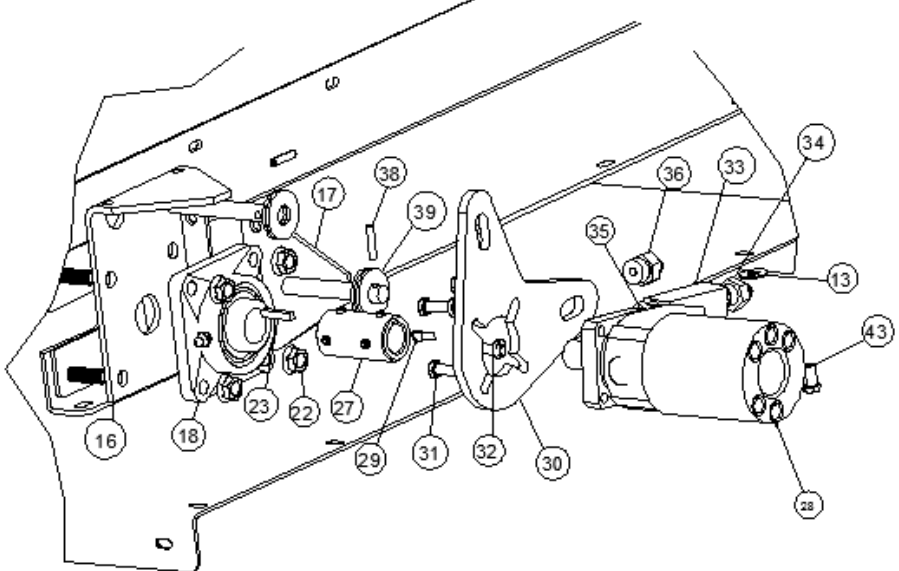
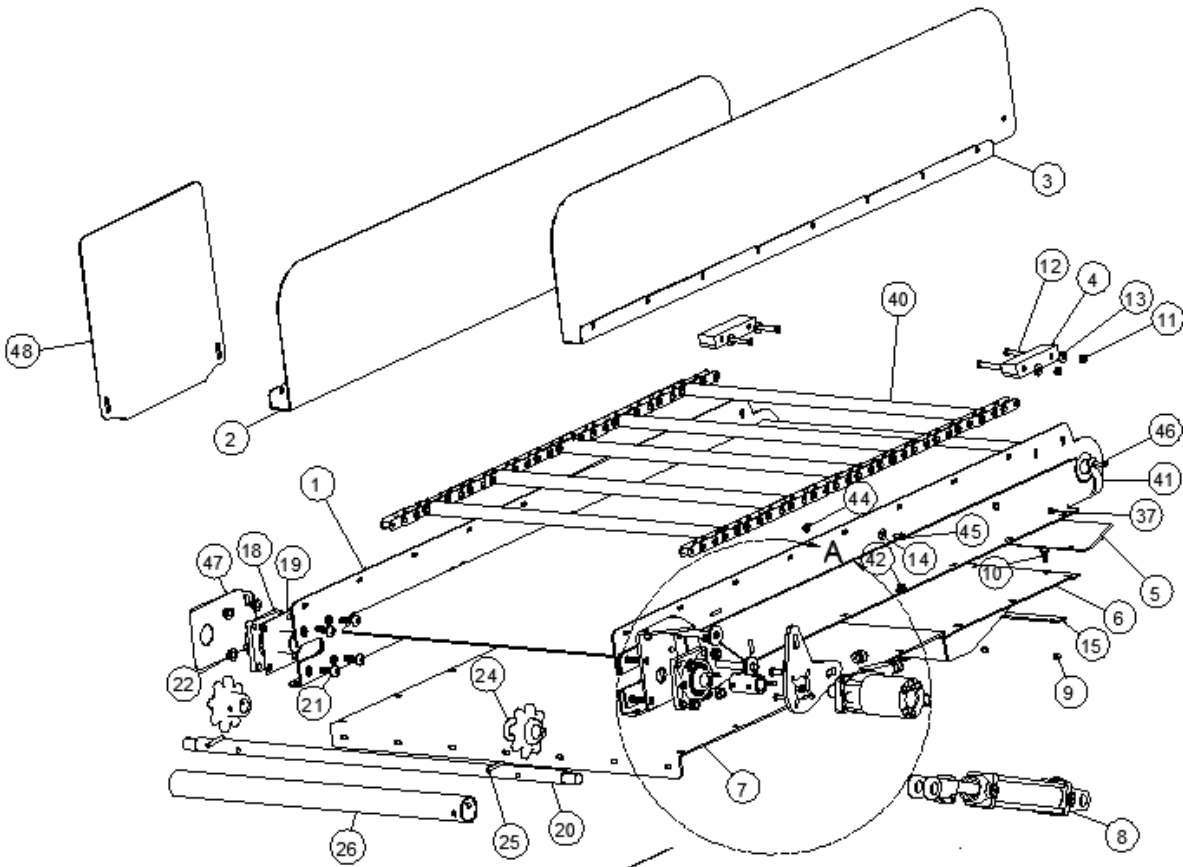


DETAIL A

FOLD-UP EXTENSION TO LAY FLAT
FOR CONVEYOR, 50" LONG

ITEM	QTY	PART NUMBER	DESCRIPTION
1	1	0-700688-L	FOLD UP EXT. FRONT SHIELD LH, 12 GA * 16 * 51 1/2
2	1	0-700688-R	FOLD UP EXT. FRONT SHIELD RH, 12 GA * 16 * 51 1/2
3	2	0-700417	CHAIN BLOCK 1 1/4 UHMW * 1 3/4 * 6
4	1	0-700736	FOLD UP CONVEYOR SEAL 1/8 UHMW * 6 * 35 1/2
5	2	0-700496	CLAMP FOR HYDRAULIC HOSES 7 GA * 1 * 3 1/2
6	2	23X81-090A	81X CONVEYOR CHAIN, 90 PITCH INC CL, 22 ATT (2 PER ASSY)
	24	0-700701	CONVEYOR CHAIN FLIGHT, 1 1/4 * 1 1/4 * 1/4 * 28 1/4
7	1	0-700550	FOLD UP EXT BOTTOM ASSY FOR CONVEYOR TO LAY FLAT
8	10	71UC2-0050	5/16-18 TOP LOCKNUT, ZP
9	5	71UC2-0060	3/8-16 TOP LOCKNUT, ZP
10	1	33E00-0208	HYD CYLINDER, 2 * 8, SAE #8 O/R PORTS
11	1	0-700739	CONVEYOR ASSY, 50 IN LONG FOLD UP FOR 81X CHAIN
12	2	0-700404	DRIVE SHAFT SLOT COVER , 12 GA * 4 5/8 * 4 5/8
13	1	0-700403	HYD MOTOR MOUNT
14	1	0-700548	HYD MOTOR MOUNT, BOLT-ON
15	2	17400-2210	BRG 4-BOLT CAST, 1 1/4 B, III LIP SEAL, 3 5/8 HOLE CENTER
16	1	0-700702	SHAFT, FOLD UP EXT DRIVE, 1 1/4 CRR * 43 3/4, 81X CHAIN
17	2	16C30-0610	SPKT 81XB6, 6T, 1 1/4 B, 3/8 PH
18	2	73S00-0622	3/8 * 2 3/4 SPIROL PIN, HBK
20	1	0-700689	OUTER CONVEYOR BOTTOM 10 GA * 28 1/4 * 38 7/8
21	1	0-700453	CONVEYOR MOTOR MOUNT 3/8 * 8 * 8
22	1	0-700598	SWING SHIELD HINGE SPACER, 1/4 * 1 1/4 * 34
23	1	0-130212	KEY, 1/4 CD * 1 1/4
24	1	26000-1000	SHAFT COUPLER, 1 5/8 OD * 1 ID * 3 OAL, 1/4 KW PN #511450
25	1	33BAM-0000	HYD MOTOR, 18.0 CU IN
26	4	72LH0-0060	3/8 SPLIT LOCK WASHER, ZP
27	4	70HC5-0610	3/8-16 * 1 1/4 HHCS, GRD 5, ZP
28	1	33BA0-0008	WOODRUFF KEY, AB, AC, AE MOTOR
29	8	72M10-0014	MACHINE BUSHING, 5/8 ID * 1 1/8 OD * 14 GA, ZP
30	2	73E00-0410	1/4 * 1 1/4 SPRING PIN, ZP
31	2	74040-0000	1/4-28 STRAIGHT GREASE ZERK
32	8	70BH5-0812	1/2-13 * 1 1/2 BUTTON HD SOCKET CAP SCREW, ZP, GRD 5
33	5	70CC5-0508	5/16-18 * 1 CARRIAGE BOLT, GRD 5, ZP
34	10	70HC5-0506	5/16-18 * 3/4 HHCS, GRD 5, ZP
35	1	70HC5-0608	3/8-16 * 1 HHCS, GRD 5, ZP
36	4	70HC5-0620	3/8-16 * 2 1/2 HHCS, GRD 5, ZP
37	1	33L00-1015	CHECK VALVE, 3/4-O/RING FEMALE/FEMALE
38	1	33HT6403-10-8	7/8-14 MALE O-RING TO 3/4-16 MALE O-RING NIPPLE
39	1	33HT6400-6-10	9/16-18 37^ JIC TO 7/8-14 O-RING
40	6	33HT6400-6-8	9/16-18 ORFS TO 3/4-16 O-RING 37^ JIC
41	10	70HC5-0506	5/16-18 * 3/4 HHCS, GRD 5, ZP
42	10	72FH0-0050	5/16 FLAT WASHER, ZP
43	10	71WC2-0050	5/16-18 FLANGE LOCKNUT, ZP
44	18	72FH0-0060	3/8 FLAT WASHER, ZP
45	10	71WC2-0060	3/8-16 FLANGE LOCKNUT, ZP
46	1	0-700569	FOLD UP CONVEYOR SHAFT SHIELD
47	8	71WC2-0080	1/2-13 FLANGE LOCKNUT, ZP
48	1	0-700432	CONVEYOR PIVOT SHIELD , 12 GA * 16 * 21

FOLD-UP EXTENSION TO LAY FLAT FOR CONVEYOR, 65" LONG
VM-200090



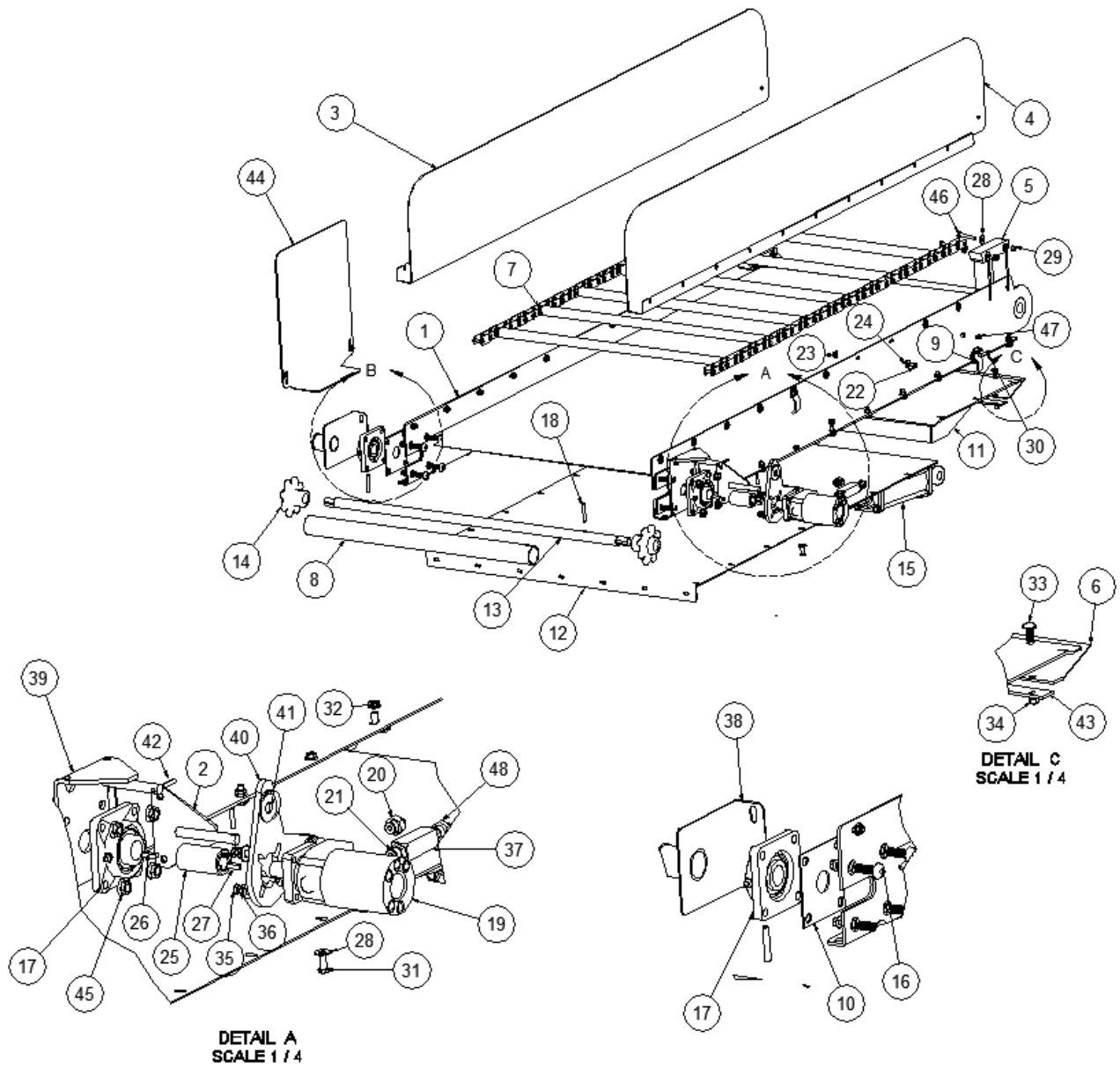
DETAIL A

FOLD-UP EXTENSION TO LAY FLAT FOR CONVEYOR, 65" LONG

ITEM	QTY	PART NUMBER	DESCRIPTION
1	1	0-700497	CONVEYOR ASSY, 65 IN FOLD UP, 557 CHAIN
	1	0-700731	CONVEYOR ASSY, 65 IN FOLD UP, 81X CHAIN
2	1	0-700499-R	FOLD UP EXT. FRONT SHIELD RH, 12 GA * 16 * 66
3	1	0-700499-L	FOLD UP EXT. FRONT SHIELD LH, 12 GA * 16 * 66
4	2	0-700417	CHAIN BLOCK 1 1/4 UHMW * 1 3/4 * 6
5	1	0-700736	FOLD UP CONVEYOR SEAL 1/8 UHMW * 6 * 35 1/2
6	1	0-700550	FOLD UP EXT BOTTOM ASSY FOR CONVEYOR, 557 CHAIN
	1	0-700732	FOLD UP EXT BOTTOM ASSY FOR CONVEYOR, 81X CHAIN
7	1	0-700552	5 FT OUTER CONVEYOR BOTTOM 10 GA * 38 7/8 * 42 3/4
8	2	33E00-0208	HYD CYLINDER, 2 * 8, SAE #8 O/R PORTS
9	5	71UC2-0050	5/16-18 TOP LOCKNUT, ZP
10	5	70CC5-0508	5/16-18 * 1 CARRIAGE BOLT, GRD 5, ZP
11	4	71UC2-0060	3/8-16 TOP LOCKNUT, ZP
12	4	70HC5-0620	3/8-16 * 2 1/2 HHCS, GRD 5, ZP
13	20	72FH0-0060	3/8 FLAT WASHER, ZP
14	20	72FH0-0050	5/16 FLAT WASHER, ZP
15	1	0-700598	SWING SHIELD HINGE SPACER, 1/4 * 1 1/4 * 34
16	1	0-700403	HYD MOTOR MOUNT
17	1	0-700548	HYD MOTOR MOUNT, BOLT-ON
18	2	17400-2210	BRG 4-BOLT CAST, 1 1/4 B, III LIP SEAL, 3 5/8 HOLE CENTER
19	1	0-700404	DRIVE SHAFT SLOT COVER , 12 GA * 4 5/8 * 4 5/8
20	1	0-700557	SHAFT, FOLD UP EXT DRIVE, 1 1/4 CRR * 43 5/8-CA557 CHAIN
	1	0-700702	SHAFT, FOLD UP EXT DRIVE, 1 1/4 CRR * 43 3/4, 81X CHAIN
21	8	70BH5-0812	1/2-13 * 1 1/2 BUTTON HD SOCKET CAP SCREW, ZP, GRD 5
22	8	71WC2-0080	1/2-13 FLANGE LOCKNUT, ZP
23	1	0-130212	KEY, 1/4 CD * 1 1/4
24	2	16C10-0810	SPKT CAST, 8T, 1 1/4 B, 3/8 PH
	2	16C30-0610	SPKT 81XB6, 6T, 1 1/4 B, 3/8 PH
25	2	73S00-0616	3/8 * 2 SPIROL PIN, HBK
	2	73S00-0622	3/8 * 2 3/4 SPIROL PIN, HBK
26	1	0-700413	SHAFT TUBE COVER 2 SCH 40 PVC PIPE * 32 3/8
27	1	26000-1000	SHAFT COUPLER, 1 5/8 OD * 1 ID * 3 OAL, 1/4 KW PN #511450
28	1	33BAG-0000	HYD MOTOR, 11.9 CU IN
	1	33BAM-0000	HYD MOTOR, 18.0 CU IN
29	1	33BA0-0008	WOODRUFF KEY, AB, AC, AE MOTOR
30	1	0-700453	CONVEYOR MOTOR MOUNT 3/8 * 8 * 8
31	4	70HC5-0610	3/8-16 * 1 1/4 HHCS, GRD 5, ZP
32	4	72LH0-0060	3/8 SPLIT LOCK WASHER, ZP
33	1	33L00-1015	CHECK VALVE, 3/4-O/RING FEMALE/FEMALE
34	1	33HT6400-6-8	9/16-18 ORFS TO 3/4-16 O-RING 37^ JIC
35	1	33HT6403-10-8	7/8-14 MALE O-RING TO 3/4-16 MALE O-RING NIPPLE
36	1	33HT6400-6-10	9/16-18 37^ JIC TO 7/8-14 O-RING
37	2	74040-0000	1/4-28 STRAIGHT GREASE ZERK
38	2	73E00-0410	1/4 * 1 1/4 SPRING PIN, ZP
39	8	72M10-0014	MACHINE BUSHING, 5/8 ID * 1 1/8 OD * 14 GA, ZP
40	1	0-700397	FRONT DISCHARGE CONVEYOR CHAIN, CA557
	2	23X81-090A	81X CONVEYOR CHAIN, 90 PITCH INC CL, 22 ATT (2 PER ASSY)
	27	0-700701	CONVEYOR CHAIN FLIGHT, 1 1/4 * 1 1/4 * 1/4 * 28 1/4
41	1	0-700496	CLAMP FOR HYDRAULIC HOSES 7 GA * 1 * 3 1/2
42	18	71WC2-0060	3/8-16 FLANGE LOCKNUT, ZP
43	16	70HC5-0606	3/8-16 * 3/4 HHCS, GRD 5, ZP
44	20	71WC2-0050	5/16-18 FLANGE LOCKNUT, ZP
45	19	70HC5-0506	5/16-18 * 3/4 HHCS, GRD 5, ZP
46	1	70HC5-0508	5/16-18 * 1 HHCS, GRD 5, ZP
47	1	0-700569	FOLD UP CONVEYOR SHAFT SHIELD
48	1	0-700432	CONVEYOR PIVOT SHIELD , 12 GA * 16 * 21

FOLD UP EXTENSION TO LAY FLAT FOR CONVEYOR, 80" LONG

VM-200100

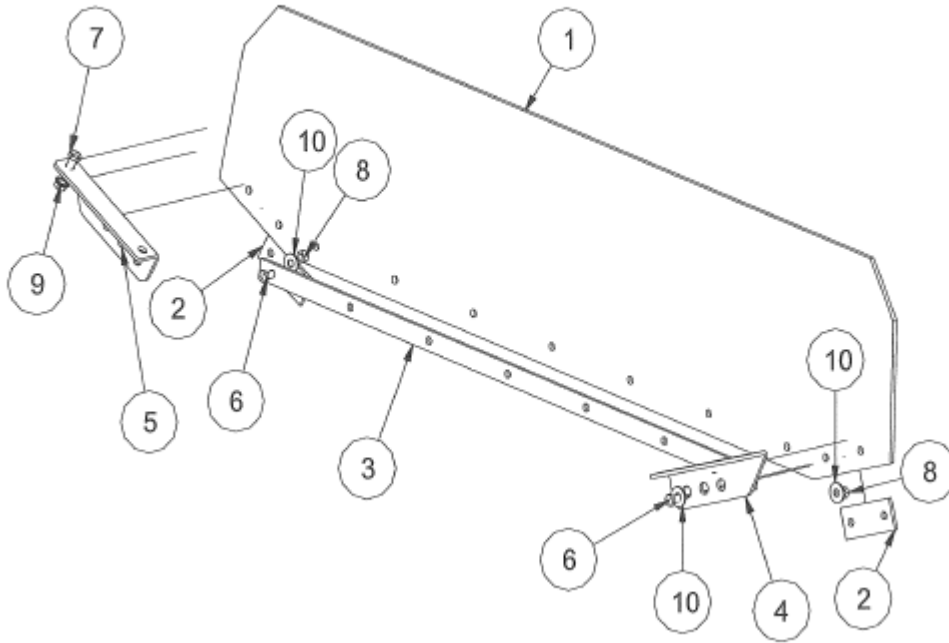


FOLD UP EXTENSION TO LAY FLAT FOR CONVEYOR, 80" LONG

ITEM	QTY	PART NUMBER	DESCRIPTION
1	1	0-700448	CONVEYOR ASSY, 80 IN FOLD UP
2	1	0-700548	HYD MOTOR MOUNT, BOLT-ON
3	1	0-700445-R	FOLD UP EXT. FRONT SHIELD RH, 12 GA * 16 * 81
4	1	0-700445-L	FOLD UP EXT. FRONT SHIELD LH, 12 GA * 16 * 81
5	2	0-700417	CHAIN BLOCK 1 1/4 UHMW * 1 3/4 * 6
6	1	0-700736	FOLD UP CONVEYOR SEAL 1/8 UHMW * 6 * 35 1/2
7	1	0-700397	FRONT DISCHARGE CONVEYOR CHAIN, CA557
8	1	0-700413	SHAFT TUBE COVER 2 SCH 40 PVC PIPE * 32 3/8
9	2	0-700496	CLAMP FOR HYDRAULIC HOSES 7 GA * 1 * 3 1/2
10	1	0-700404	DRIVE SHAFT SLOT COVER , 12 GA * 4 5/8 * 4 5/8
11	1	0-700550	FOLD UP EXT BOTTOM ASSY FOR CONVEYOR TO LAY FLAT
12	1	0-700553	6 FT OUTER CONVEYOR BOTTOM 10 GA * 38 7/8 * 57
13	1	0-700557	SHAFT, FOLD UP EXT DRIVE, 1 1/4 CRR * 43 5/8-CA557 CHAIN
14	2	16C10-0810	SPKLT CAST, 8T, 1 1/4 B, 3/8 PH
15	1	33E00-0308	HYD CYLINDER, 3 * 8, 1/2-NPT PORTS
	2	33E00-0208	HYD CYLINDER, 2 * 8, SAE #8 O/R PORTS
16	8	70BH5-0812	1/2-13 * 1 1/2 BUTTON HD SOCKET CAP SCREW, ZP, GRD 5
17	2	17400-2210	BRG 4-BOLT CAST, 1 1/4 B, III LIP SEAL, 3 5/8 HOLE CENTER
18	2	73S00-0616	3/8 * 2 SPIROL PIN, HBK
19	1	33BAG-0000	HYD MOTOR, 11.9 CU IN
20	2	33HT6400-6-10	9/16-18 37^ JIC TO 7/8-14 O-RING
21	1	33HT6403-10-8	7/8-14 MALE O-RING TO 3/4-16 MALE O-RING NIPPLE
22	18	70HC5-0506	5/16-18 * 3/4 HHCS, GRD 5, ZP
23	20	71WC2-0050	5/16-18 FLANGE LOCKNUT, ZP
24	20	72FH0-0050	5/16 FLAT WASHER, ZP
25	1	26000-1000	SHAFT COUPLER, 1 5/8 OD * 1 ID * 3 OAL, 1/4 KW PN #511450
26	1	0-130212	KEY, 1/4 CD * 1 1/4
27	1	33BA0-0008	WOODRUFF KEY, AB, AC, AE MOTOR
28	32	72FH0-0060	3/8 FLAT WASHER, ZP
29	4	71UC2-0060	3/8-16 TOP LOCKNUT, ZP
30	2	70HC5-0508	5/16-18 * 1 HHCS, GRD 5, ZP
31	20	70HC5-0608	3/8-16 * 1 HHCS, GRD 5, ZP
32	20	71WC2-0060	3/8-16 FLANGE LOCKNUT, ZP
33	5	70CC5-0508	5/16-18 * 1 CARRIAGE BOLT, GRD 5, ZP
34	5	71UC2-0050	5/16-18 TOP LOCKNUT, ZP
35	4	70HC5-0610	3/8-16 * 1 1/4 HHCS, GRD 5, ZP
36	4	72LH0-0060	3/8 SPLIT LOCK WASHER, ZP
37	1	33L00-1015	CHECK VALVE, 3/4-O/RING FEMALE/FEMALE
38	1	0-700569	FOLD UP CONVEYOR SHAFT SHIELD
39	1	0-700403	HYD MOTOR MOUNT
40	1	0-700453	CONVEYOR MOTOR MOUNT 3/8 * 8 * 8
41	8	72M10-0014	MACHINE BUSHING, 5/8 ID * 1 1/8 OD * 14 GA, ZP
42	2	73E00-0410	1/4 * 1 1/4 SPRING PIN, ZP
43	1	0-700598	SWING SHIELD HINGE SPACER, 1/4 * 1 1/4 * 34
44	1	0-700432	CONVEYOR PIVOT SHIELD , 12 GA * 16 * 21
45	8	71WC2-0080	1/2-13 FLANGE LOCKNUT, ZP
46	4	70HC5-0620	3/8-16 * 2 1/2 HHCS, GRD 5, ZP
47	2	74040-0000	1/4-28 STRAIGHT GREASE ZERK
48	1	33HT6400-6-8	9/16-18 ORFS TO 3/4-16 O-RING 37^ JIC

FRONT DISCHARGE CONVEYOR RUBBER SPOUT

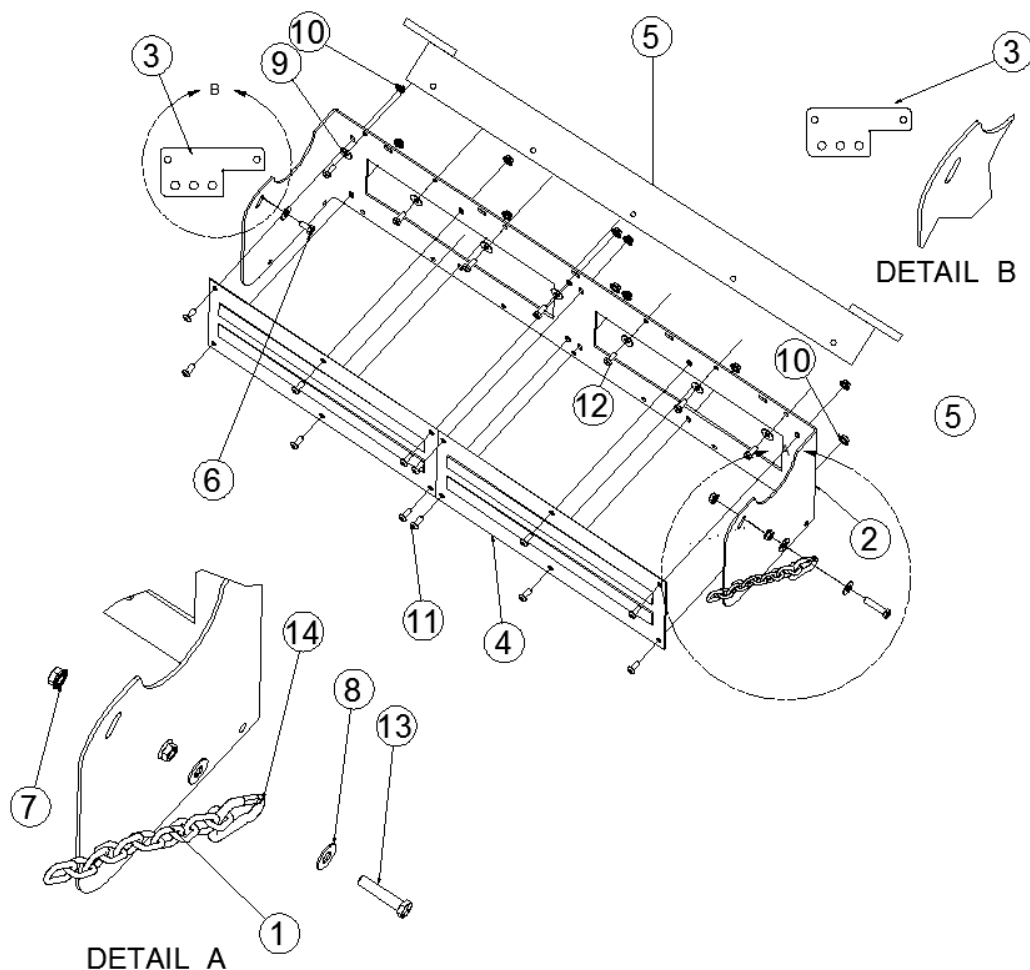
VM-200110



ITEM	QTY	PART NUMBER	DESCRIPTION
1	1	42000-1247	VM CONVEYOR RUBBER SPOUT 1/4 * 11 1/2 * 47
2	2	0-700436	FRONT PANEL BRACE 7 GA * 1 1/2 * 3 1/2
3	1	0-700681	CONVEYOR STRAP FOR RUBBER SPOUT 7 GA * 1 * 34 3/4
4	1	0-700468-R	MAGNET HINGE BRACKET 7 GA * 3 1/4 * 7
5	1	0-700468-L	MAGNET HINGE BRACKET 7 GA * 3 1/4 * 7
6	11	70HC5-0508	5/16-18 * 1 HHCS, GRD 5, ZP
7	4	70HC5-0606	3/8-16 * 3/4 HHCS, GRD 5, ZP
8	11	71UC2-0050	5/16-18 TOP LOCKNUT, ZP
9	4	71WC2-0060	3/8-16 FLANGE LOCKNUT, ZP
10	15	72FH0-0050	5/16 FLAT WASHER, ZP

MAGNET SPOUT ASSEMBLY

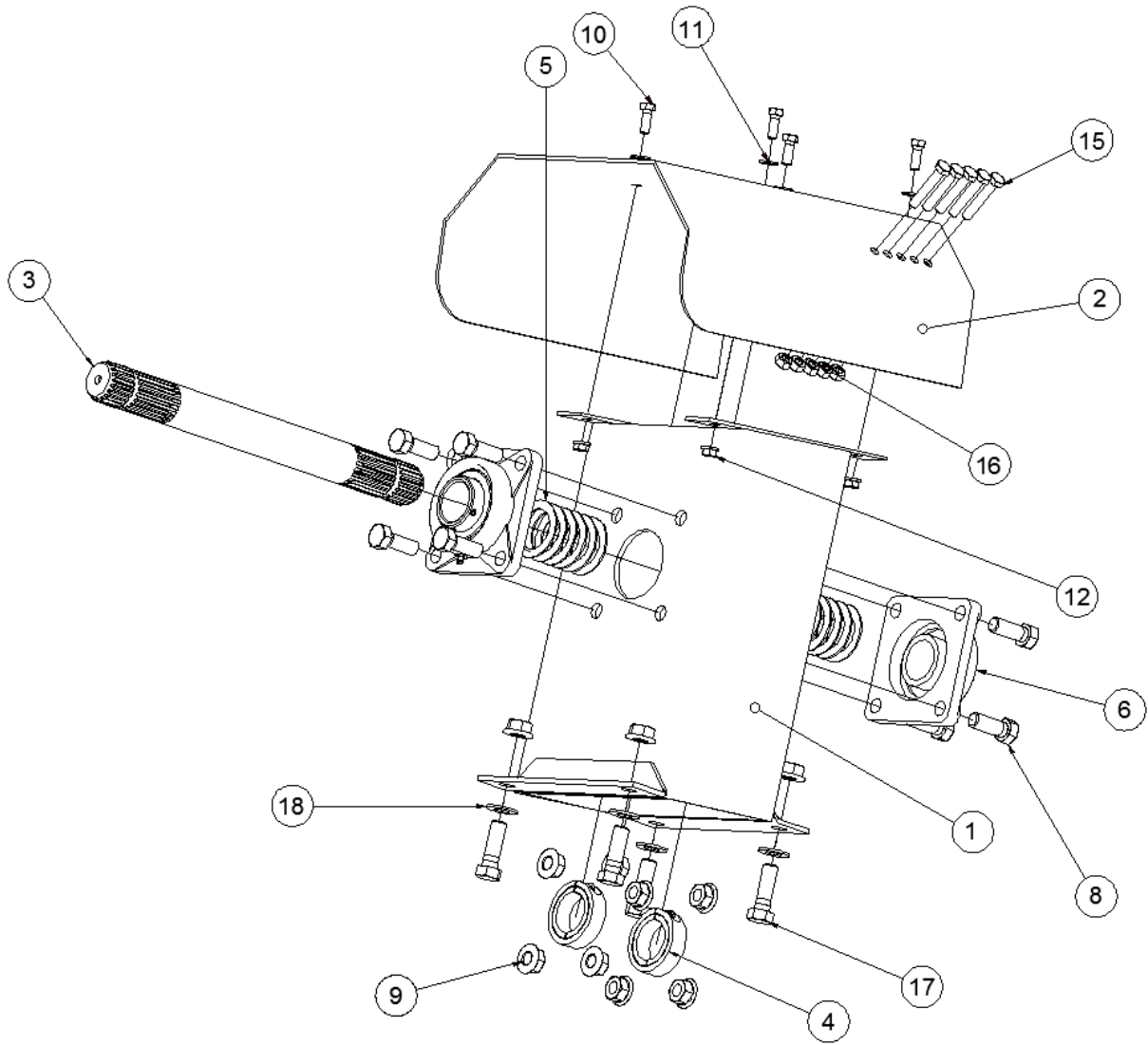
VM-200120



ITEM	QTY	PART NUMBER	DESCRIPTION
1	2	34P04-0000	3/16 PROOF COIL CHAIN GRD 28
2	1	0-700424	DUAL DISCHARGE MAGNET MOUNT 10 GA * 11 * 61
3	1	0-700468-L	MAGNET HINGE BRACKET 7 GA * 3 1/4 * 7
	1	0-700468-R	MAGNET HINGE BRACKET 7 GA * 3 1/4 * 7
4	2	45000-0820	MAGNET, 8 1/2 * 19 1/2, STAINLESS
5	1	0-700472	DISCHARGE ADJUSTABLE MAGNET MOUNT ASSY.TYPE HINGE
6	2	70HC5-0506	5/16-18 * 3/4 HHCS, GRD 5, ZP
7	3	71WC2-0060	3/8-16 FLANGE LOCKNUT, ZP
8	4	72FH0-0060	3/8 FLAT WASHER, ZP
9	7	72FH0-0050	5/16 FLAT WASHER, ZP
10	20	71WC2-0050	5/16-18 FLANGE LOCKNUT, ZP
11	12	70BH5-0506	5/16-18 * 3/4 BUTTON HD SOCKET CAP SCREW, ZP, GRD 5
12	7	70BH5-0506	5/16-18 * 3/4 BUTTON HD SOCKET CAP SCREW, ZP, GRD 5
13	2	70HC5-0614	3/8-16 * 1 3/4 HHCS, GRD 5, ZP
14	2	34SS4-0000	SPRING SNAP LOCK, ZP, 5/16 * 3 1/8

TRANSFER BOX

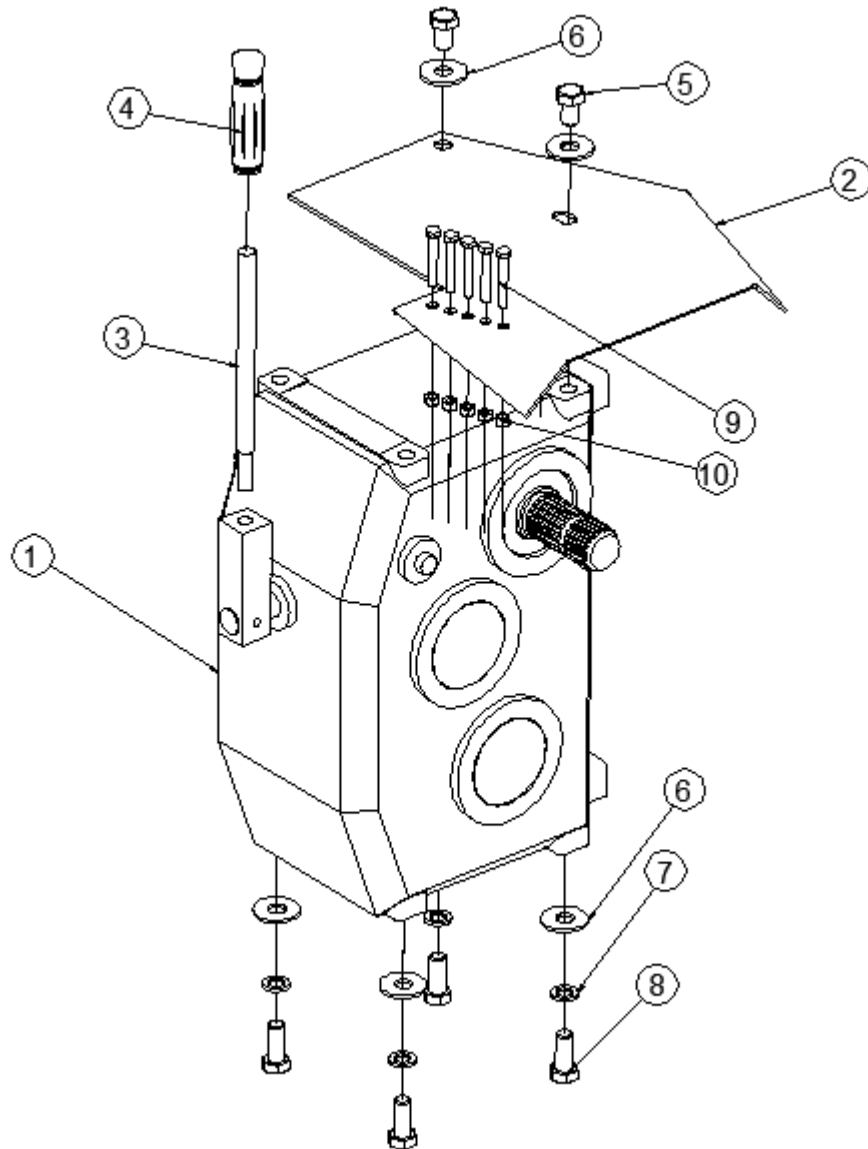
VM-200130



ITEM	QTY	PART NUMBER	DESCRIPTION
1	1	0-700392	SINGLE SPEED ANGLED TRANSFER BOX
2	1	0-700614	TRANSFER BOX PTO COVER 10 GA * 18 * 26
3	1	26SCH-0218	SPLINED CARRIER SHAFT, 1 3/4-20 SPLINED BOTH ENDS * 18
4	2	28010-0014	LOCK COLLAR, 1 3/4 BORE, SINGLE SPLIT
5	12	72M28-0014	MACHINE BUSHING, 1 3/4 ID * 2 1/2 OD * 14 GA, ZP
6	2	17400-2214	BRG 4-BOLT CAST, 1 3/4 B, III LIP SEAL, 4 1/8 HOLE CENTER
8	12	70HC5-1014	5/8-11 * 1 3/4 HHCS, GRD 5, ZP
9	12	71WC2-0100	5/8-11 FLANGE LOCKNUT, ZP
10	4	70HC5-0608	3/8-16 * 1 HHCS, GRD 5, ZP
11	4	72FH0-0060	3/8 FLAT WASHER, ZP
12	4	71WC2-0060	3/8-16 FLANGE LOCKNUT, ZP
15	5	70HM8-0817	M8-1.25 * 55 HHCS CLASS 8.8
	5	70HC2-0518	5/16 * 2 1/4 HHCS, GRD 2, BLACK
16	5	71UM8-0800	M8-1.25 TOP LOCK NUT GRD 8.8, ZP
	5	71UC2-0050	5/16-18 TOP LOCKNUT, ZP
18	4	72FH0-0100	5/8 FLAT WASHER, ZP

2-SPEED GEARBOX

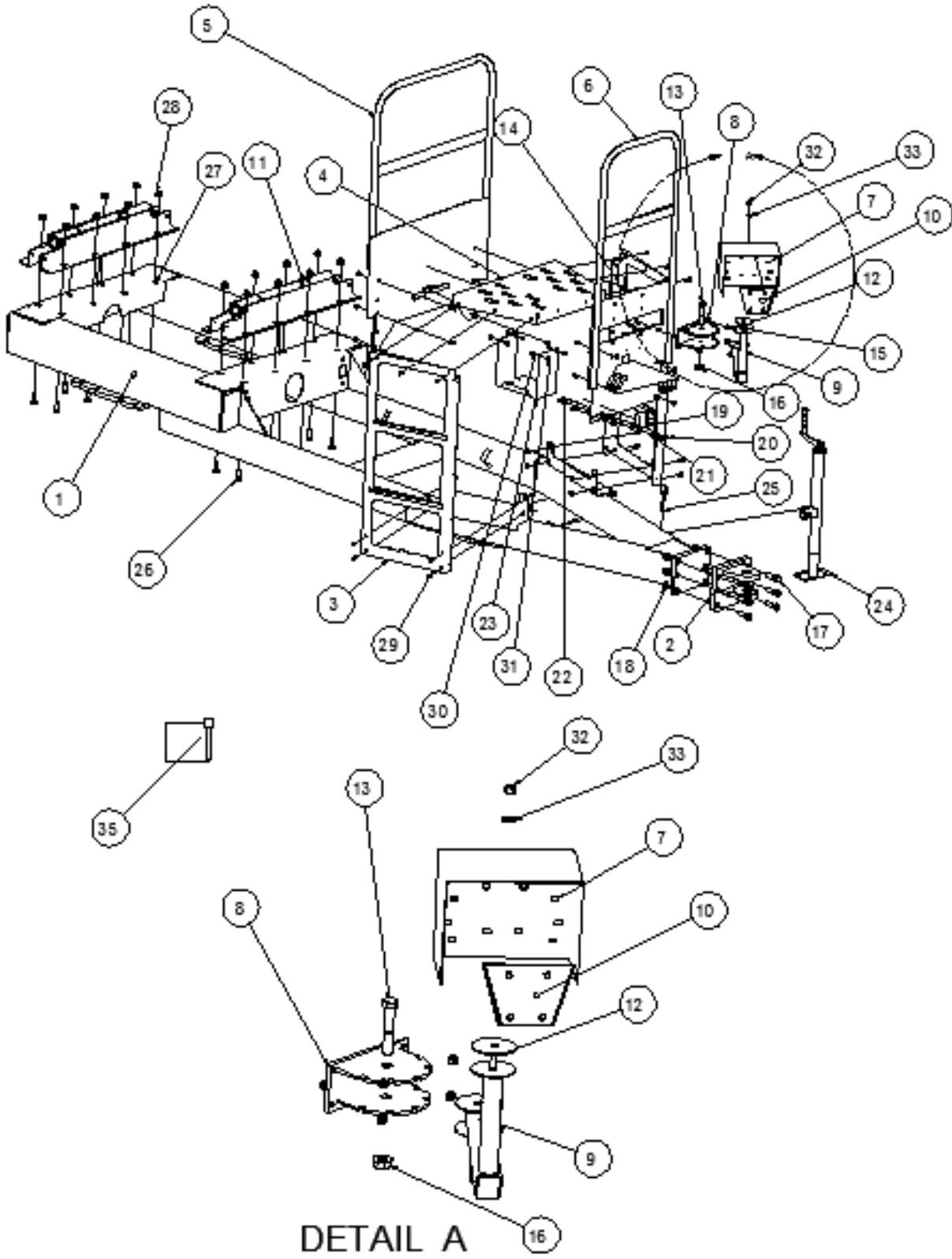
VM-200140



ITEM	QTY	PART NUMBER	DESCRIPTION
1	1	26S24-5367	GEARBOX 2-SPEED, 1:5 TO 1:1 WITH 1 3/4-20 INPUT AND OUTPUT
2	1	0-700001	FRONT PTO SHIELD 10 GA * 14 * 16
3	1	0-700280	SHIFT LEVER TWO SPEED GEARBOX 5/8 CCR * 10
4	1	41P00-0540	PLASTIC GRIP, 5/8 ID * 5
5	2	70HM8-1625	M16-2.0 * 25 HHCS, CLASS 8.8
6	6	72FH0-0100	5/8 FLAT WASHER, ZP
7	4	72LH0-0100	5/8 SPLIT LOCK WASHER, ZP
8	4	70HM8-1645	M16-2.0 * 45 HHCS, CLASS 8.8, ZP
9	5	70HM8-0817	M8-1.25 * 55 HHCS CLASS 8.8
	5	70HC2-0518	5/16 * 2 1/4 HHCS, GRD 2, BLACK
10	5	71UM8-0800	M8-1.25 TOP LOCK NUT GRD 8.8, ZP
	5	71UC2-0050	5/16-18 TOP LOCKNUT, ZP

VM5020, 6020, 4020 FRAME

[VM-200150](#)

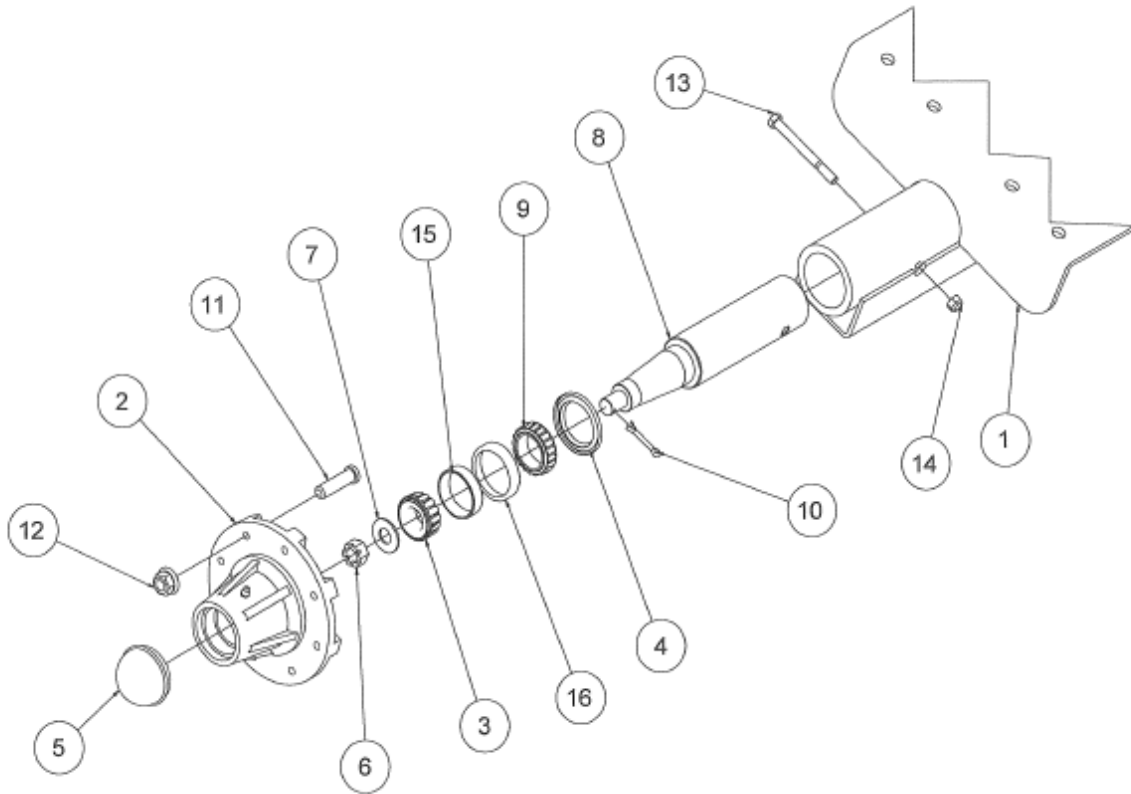


VM5020, 6020, 4020 FRAME

ITEM	QTY	PART NUMBER	DESCRIPTION
1	1	0-700512	FRAME ASSY, V4020 & 5020
	1	0-700675	FRAME ASSY, V6020, FOR COMER 1603 PLANETARY
	1	0-700719	FRAME ASSY, SIDE DISCHARGE V4020 & 5020
2	1	0-700239	HITCH BRACKET ASSEMBLY, BOLT-ON
3	2	0-700389	PLATFORM LADDER ASSY FOR 750
	2	0-700388	PLATFORM LADDER ASSY FOR 360,550 & 2820
4	1	0-700267	PLATFORM FOR SMALL VM
5	1	0-700414	REAR HAND RAIL ASSY. FOR VM PLATFORM
6	1	0-700264	FRONT HAND RAIL ASSY FOR SMALL VM5020/6020
	1	0-700297	FRONT HANDRAIL ASSY FOR VM4020
7	1	0-320350	SWIVEL MOUNT INDICATOR BKT
8	1	0-600605	SWIVEL MOUNT BRACKET 1/4 * 4 * 9
9	1	0-700272	INDICATOR ARM SWIVEL SMALL VM
10	1	0-320149	SCALE HEAD MOUNTING BRACKET
11	2	0-700513	WEIGH BAR BRACKET ASSY, V4020 & V5020
	2	0-700559	WEIGH BAR BRACKET, MECHANICAL, 30,000 LB FRAME, 725
12	1	0-600450	FRICTION DISC SWIVEL MOUNT, 1/8 RUBBER * 3 1/2 DIA
13	1	70HC2-1232	3/4-10 * 4 HHCS, GRD 2, ZP
14	4	70HC5-0608	3/8-16 * 1 HHCS, GRD 5, ZP
15	30	71WC2-0060	3/8-16 FLANGE LOCKNUT, ZP
16	1	71TC2-0120	3/4-10 TWA LOCKNUT, ZP
17	6	70HF8-1222	3/4-16 * 2 3/4 HHCS, GRD 5, ZP
18	6	71UF5-0120	3/4-16 TOP LOCKNUT, ZP
19	1	10050-2605	PLUG STORAGE HOLDER FOR LIGHT HARNESS
20	2	70HC5-0406	1/4-20 * 3/4 HHCS, GRD 5, ZP
21	4	72FH0-0040	1/4 FLAT WASHER, ZP
22	6	71UC2-0040	1/4-20 TOP LOCKNUT, ZP
23	1	0-700408	BATTERY BOX , 12 GA * 13 * 35
24	1	29B00-5000	JACK ASSY, 5000 LB TOP WIND, 15" LIFT
	4	29T00-8000	JACK ASSEMBLY WITH TUBE, 10,000 LIFT, 7/8 PH
25	1	73H00-1434	FIXED HANDLE HITCH PIN, 7/8 * 4 1/4
26	16	70HC5-1014	5/8-11 * 1 3/4 HHCS, GRD 5, ZP
27	16	72FH0-0100	5/8 FLAT WASHER, ZP
28	16	71WC2-0100	5/8-11 FLANGE LOCKNUT, ZP
29	26	70HC5-0606	3/8-16 * 3/4 HHCS, GRD 5, ZP
30	4	70HC5-0506	5/16-18 * 3/4 HHCS, GRD 5, ZP
31	4	71WC2-0050	5/16-18 FLANGE LOCKNUT, ZP
32	1	71UF8-0080	1/2-20 TOP LOCKNUT, ZP
33	1	72FH0-0080	1/2 FLAT WASHER, ZP
35	1	73T00-0628	COIL TENSION PIN 3/8 * 3 1/2

8-BOLT SPINDLE

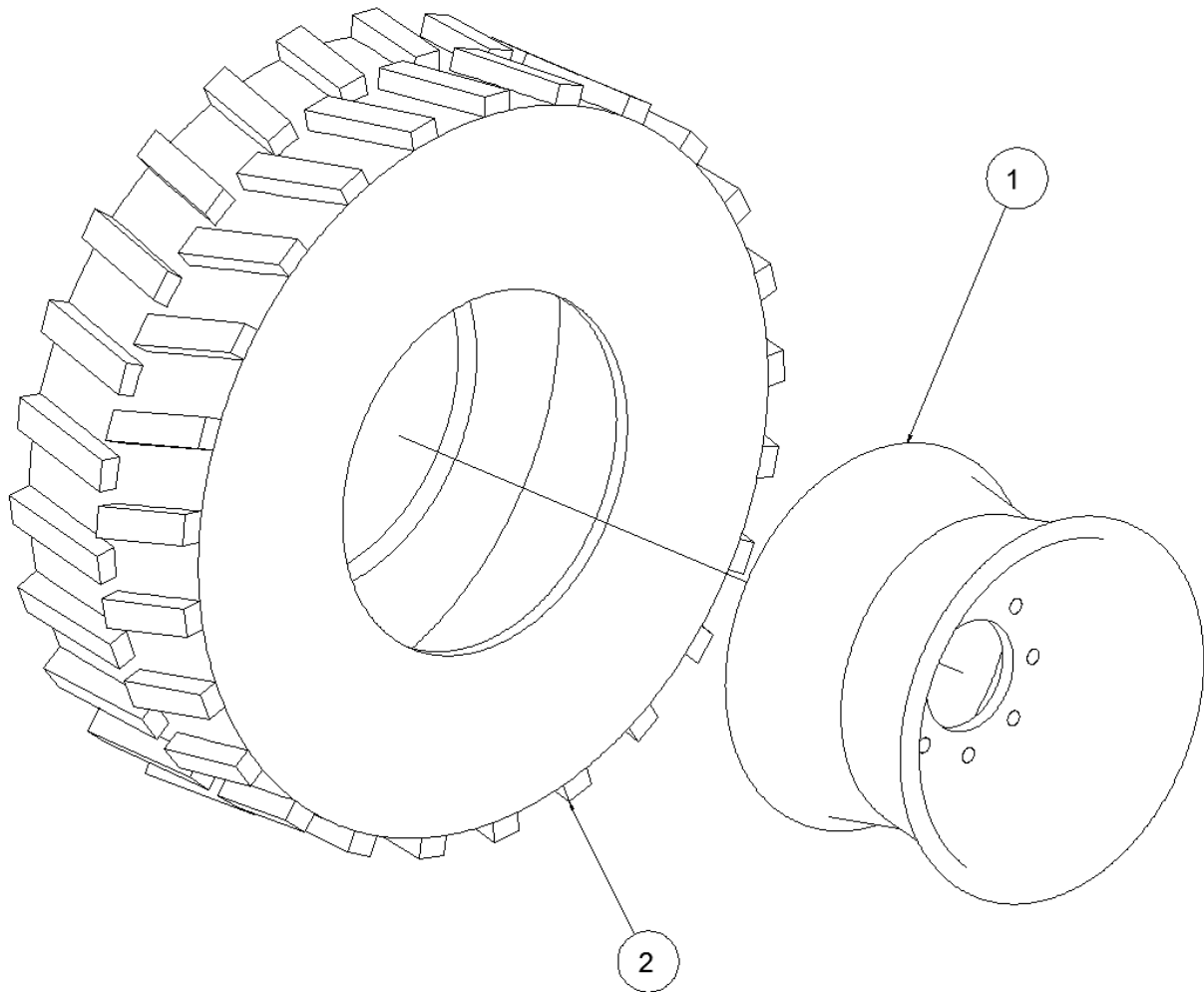
[VM-200160](#)



ITEM	QTY	PART NUMBER	DESCRIPTION
1	1	0-700536	AXLE ASSY, 8-BOLT BAR TIRE, 4020, 5020
2	1	1924A-1000	WHEEL HUB 8-BOLT, 10000 LB, CONES, SEALS & STUDS
3	1	18LM501349	BRG CONE, OUTER
4	1	180N45-5566	GREASE SEAL 3.25 ID * 4.125 OD
5	1	1924P-0003	CAP, 8-BOLT HD (8000 LB)
6	1	2008P-0001	SPINDLE NUT, 1-14 SLOTTED NUT
7	1	2008P-0002	SPINDLE WASHER, 1 1/16 ID * 2 1/8 OD * 1/4 THICK
8	1	2026A-0160	SPINDLE ASSY 3 1/4 * 16, 10000 LB, W/NUT WASHER & COTTER
9	1	1800039250	BRG CONE, INNER 2.5 ID
10	1	2008P-0003	SPINDLE COTTER, 7/32 * 1 1/2
11	8	1925P-0002	WHEEL STUD, 3/4-16 * 2 5/8 FOR 10 BOLT HUB, Q871
12	8	1925P-0004	WHEEL NUT, FLANGED, 3/4-16, ZP
13	1	70HC8-0840	1/2-13 * 5 HHCS, GRD 8, ZP
14	1	71UC2-0080	1/2-13 TOP LOCKNUT, ZP
15	1	18LM501310	BRG CUP, OUTER
16	1	180003-9412	BRG CUP, INNER

TIRES AND WHEELS

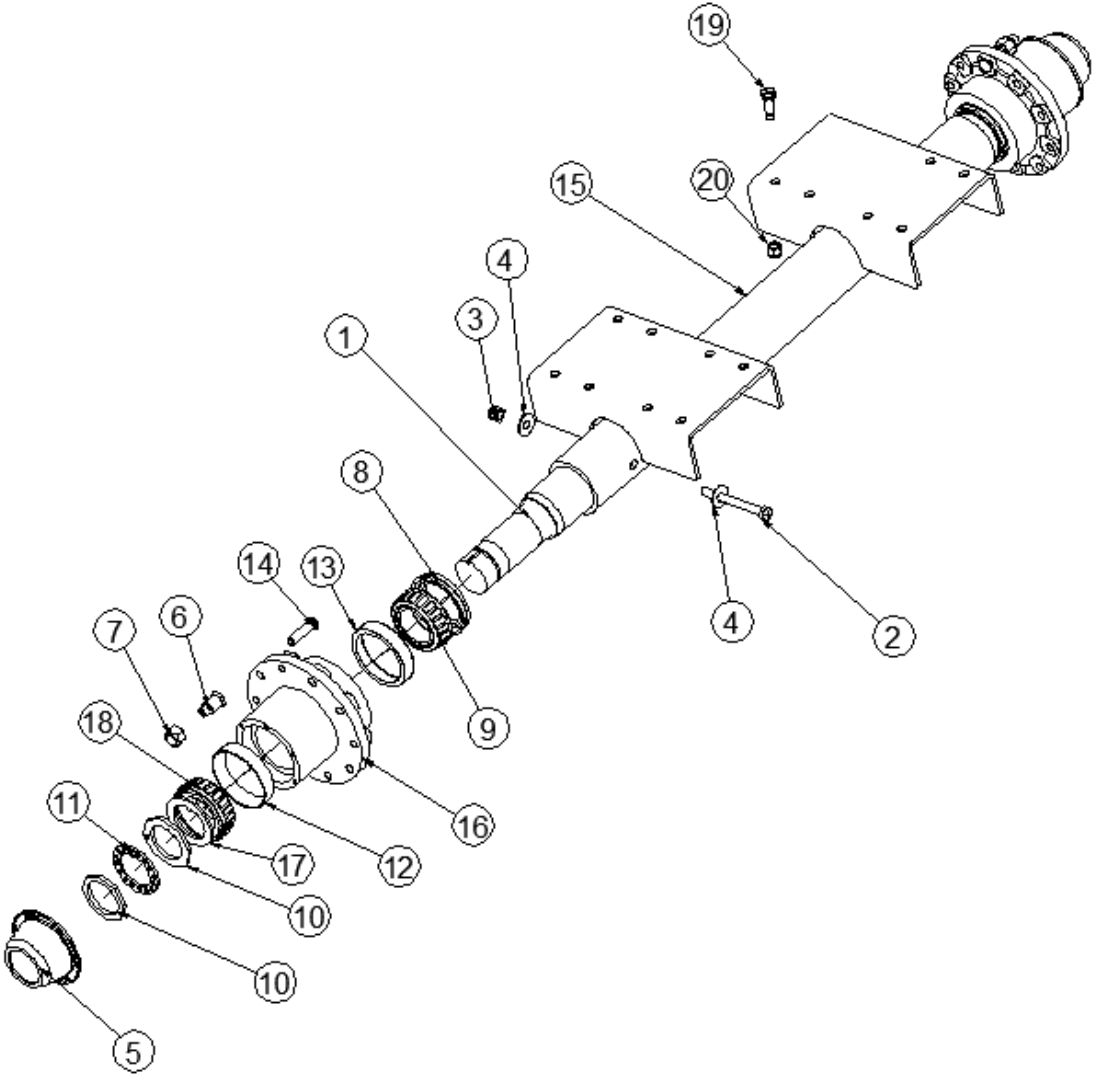
VM-200170



ITEM	QTY	PART NUMBER	DESCRIPTION
1	2	2100T-2219	TIRE 445/50R 22.5 WIDE BASE AND CASING
2	2	2108P-1324	WHEEL 8-BOLT, 22.5 * 13, FOR 3/4 STUDS, 10,000 LB CAP

VM4020/5020 10-BOLT SPINDLE

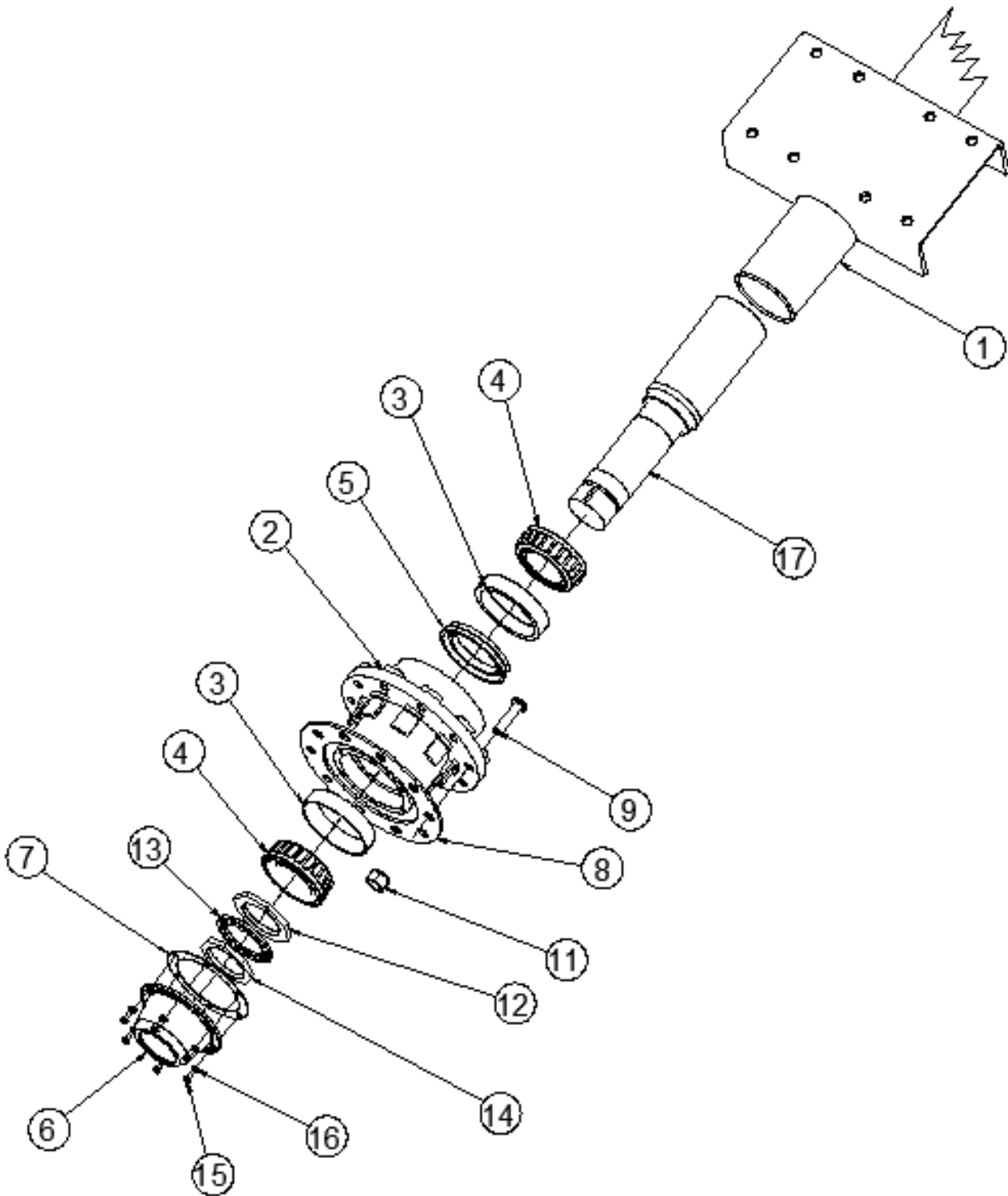
[VM-200180](#)



VM4020/5020 10-BOLT SPINDLE

ITEM	QTY	PART NUMBER	DESCRIPTION
1	2	2028P-0180	SPINDLE, 4 DIA * 18, 15000 LB
2	2	70HC5-1256	3/4-10 * 7 HHCS, GRD 5, ZP
3	2	71UC2-0110	3/4-10 TOP LOCKNUT, ZP
4	4	72FH0-0120	3/4 FLAT WASHER, ZP
5	2	2009P-0013	HUBCAP, FOR HUB 1928P-1001/ OIL FILL
6	20	1930P-0007	INNER STUD NUT, RH THREAD
7	20	1930P-0008	OUTER STUD NUT, RH THREAD
8	2	180N370219	GREASE SEAL, FOR 1928A-1001
9	2	2009P-0014	INNER BEARING CONE, 4020 - 5020
10	4	2014P-0001	SPINDLE NUT, 1 3/4-12
11	2	2014P-0002	SPINDLE SPIDER WASHER
12	2	2009P-0017	OUTER BEARING CUP 4020 - 5020
13	2	2009P-0016	INNER BEARING CUP 4020 - 5020
14	20	2009P-0018	WHEEL STUD, 3/4-16 x 2 1/2, FOR HUB 1928P-1001
15	1	0-700509	AXLE ASSEMBLY, 10-BOLT 17.5 WHEEL, V4020 & V5020
16	2	1928A-1001	WHEEL HUB, 10-BOLT WITH CUPS AND STUDS, 7500 LBS 8.75 BC, RH
17	2	2014P-0000	SPINDLE TAB WASHER
18	2	2009P-0015	OUTER BEARING CONE, 4020 - 5020
19	16	70HC5-1220	3/4-10 * 2 1/2 HHCS, GRD 5, ZP
20	16	71WC2-0120	3/4-10 FLANGE LOCKNUT, ZP

VM6020 10-BOLT SPINDLE
VM-200190



VM6020 10-BOLT SPINDLE

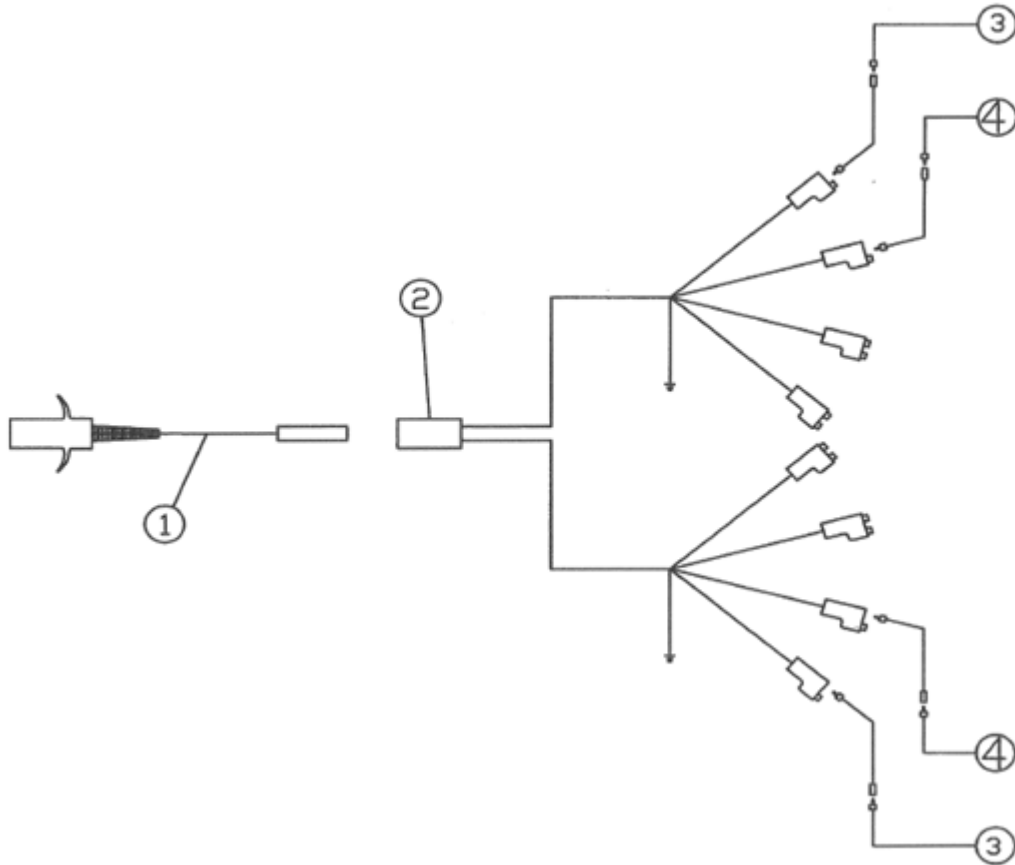
ITEM	QTY	PART NUMBER	DESCRIPTION
1	1	0-700580	AXLE ASSEMBLY, 30,000 CAPACITY, 725, 875
	1	0-700686	AXLE ASSEMBLY, 4020 & 5020 WITH PGA3003 PLANETARY
2	2	1930P-0109	HUB, 10 STUD W/ CUPS, RH, HUB PILOTED
3	4	1930P-0120	BRG CUP # HM518410
4	4	1930P-0105	BEARING CONE #518445
5	2	1930P-0100	GREASE SEAL #OUT851
6	2	1930P-0019	HUBCAP, OIL LUBE WITH GASKET
7	2	1930P-0021	HUBCAP GASKET
8	2	0-700386	10 BOLT DUAL WHEEL SPACER 1/4 * 13 1/4 DIA.
9	10	1930P-0115	WHEEL STUD.92 SHANK M22-1.5* 100MM
11	10	1922P-0002	FLANGE NUT SWIVEL M22-1.5
12	2	2030P-0101	SPINDLE NUT, INNER
13	2	2030P-0102	SPINDLE WASHER, 3 1/2 OD
14	2	2030P-0103	SPINDLE NUT, OUTER
15	12	70HC5-0506	5/16-18 * 3/4 HHCS, GRD 5, ZP
16	12	72LH0-0050	5/16 SPLIT LOCK WASHER, ZP
17	2	2030A-0100	SPINDLE, FOR ROCKWELL HUB, BOLT IN, 4 1/2 * 22 3/8

TIRE OPTIONS

ITEM	QTY	PART NUMBER	DESCRIPTION
1	2	2100T-2219	TIRE 445/50R 22.5 WIDE BASE AND CASING
	2	0-700800	WHEEL 22.5 x 13 10-HOLE W/ REINFORCING RING, FOR 7/8 STUDS
2	4	2100T-2209	TIRE, 255/70R22.5 16 PLY GRIPPER MUD & SNOW RECAP
	4	2110P-0824	WHEEL, ACCURIDE HUB PILOTED, 22.5 * 8.25, 7400 LB RATING
3	2	2100T-4011	40 * 14.5 * 19 TIRE
	2	2110P-4011	WHEEL, 10 BOLT, 19" FOR 40 * 14.5 TIRE

VM4020/5020 WIRE DIAGRAM

[VM-200200](#)



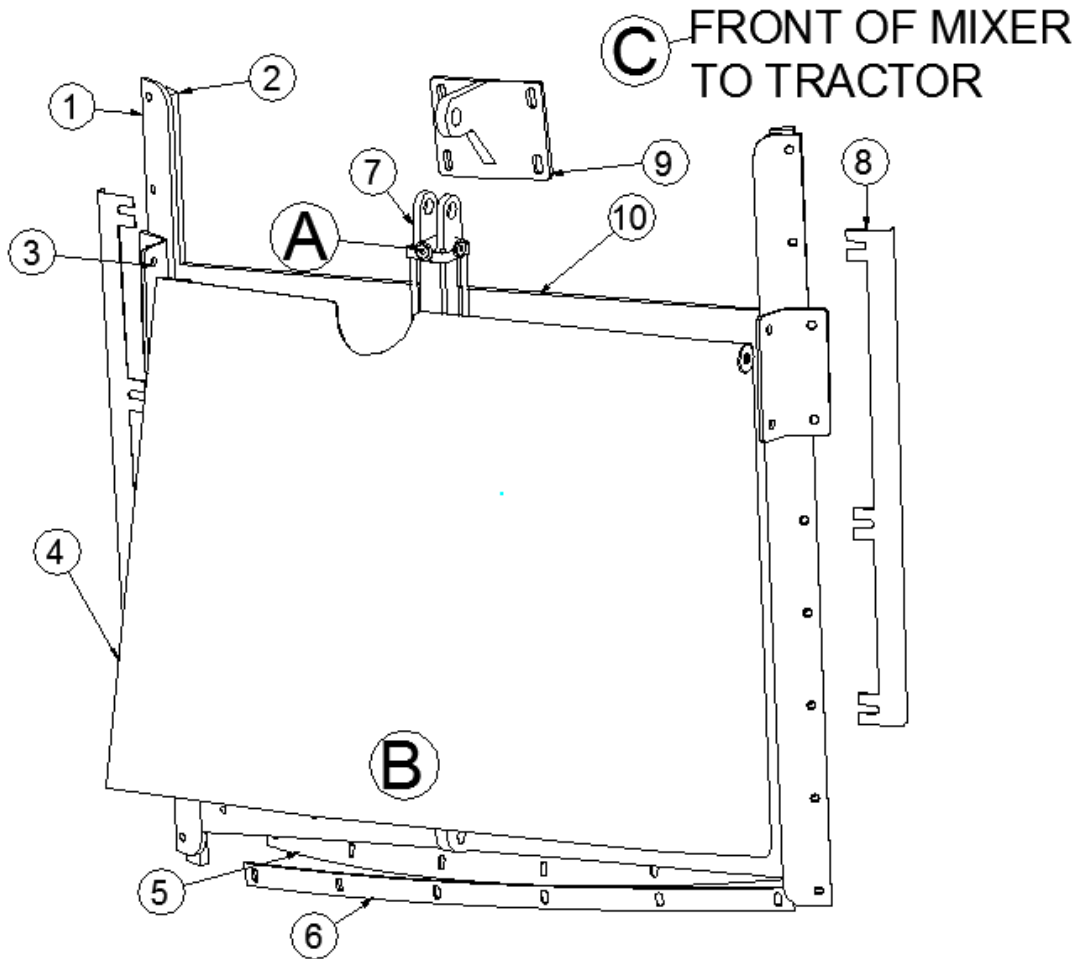
ITEM	QTY	PART NUMBER	DESCRIPTION
1	1	10050-2425	HARNESS, 30 FT STRAIGHT SECTION, SHIELD CABLE
2	1	10050-2510	HARNESS, WISHBONE 10 FT WITH CONNECTORS
3	1	10050-2600	AMBER LAMP, ROUND
4	1	10050-2601	RED LAMP, ROUND
5	1	10050-0010	LIGHT KIT FOR AG EQUIPMENT, W/ 30' HARNESS
6	1	10050-2605	PLUG STORAGE HOLDER FOR LIGHT HARNESS

WIRING DIAGRAM

TERMINAL NUMBER	WIRE COLOR	CURCUIT SERVICE
#1	WHITE	GROUND
#3	YELLOW	LEFT FLASHING/TURN SIGNAL
#5	GREEN	RIGHT FLASHING/TURN SIGNAL
#6	BROWN	TAIL LIGHTS
<u>TERMINALS NOT USED BUT AVAILABLE FOR FUNCTIONS BELOW</u>		
#2	BLACK	WORKING LIGHTS
#4	RED	AUXILIARY
#7	BLUE	AUXILIARY

REAR DISCHARGE DOOR (OPTION)

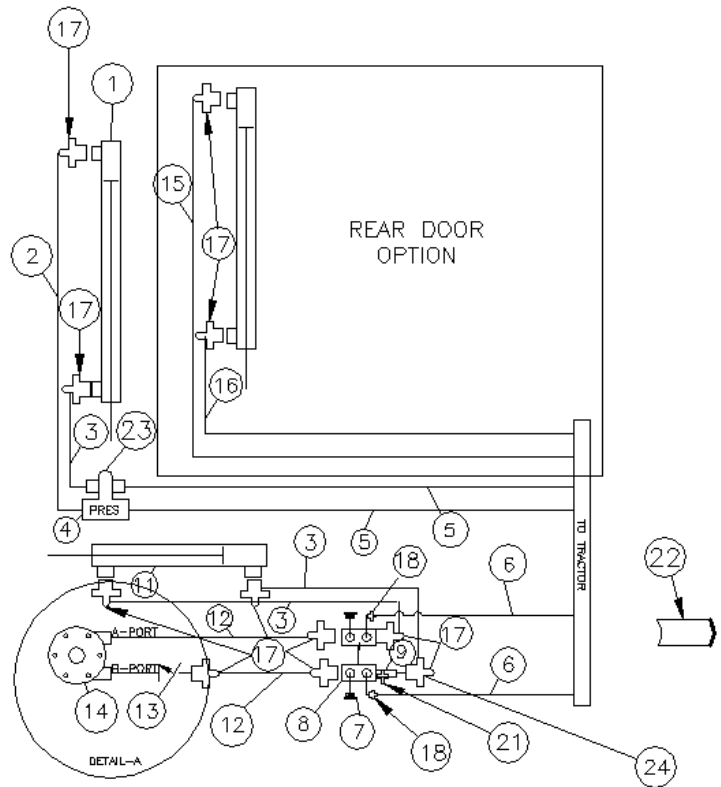
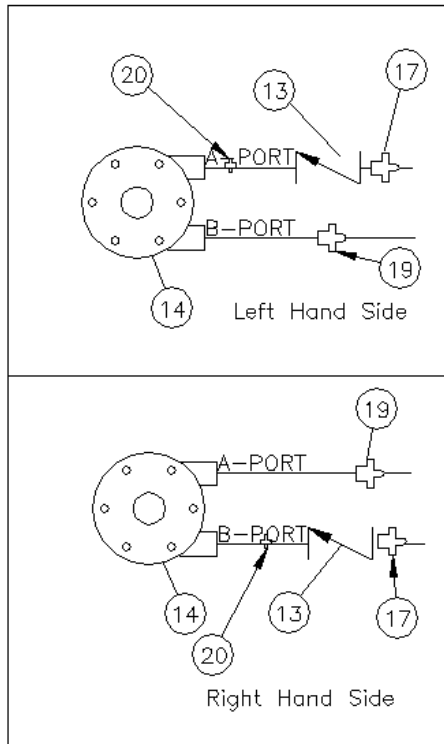
VM-200210



ITEM	QTY	PART NUMBER	DESCRIPTION
1	2	0-700092	DOOR GUIDE STRAP 3/8 * 3 * 50
2	2	0-700093	DOOR SPACER STRAP 5/8 * 1 1/2 * 50
3	2	0-700445	REAR DOOR SHIELD MOUNT 1/4 * 5 1/2 * 8
4	1	0-700443	REAR DOOR SHIELD
5	1	40002-0239	RUBBER SEAL TS DOOR, 2 1/8 * 38 5/8
6	1	0-700390	FRONT DOOR SEAL STRAP 7 GA * 1 1/2 * 38 11/16
7	1	33E00-2530	HYD CYLINDER, 2 1/2 * 30, SAE #8 PORTS
8	2	0-700444	WIRE COVER 14 GA * 3 1/2 * 32
9	1	0-700578	UPPER CYLINDER BRACKET
	1	0-700381	DISCHARGE DOOR CYLINDER BRKT
10	1	0-700506	DISCHARGE DOOR
	1	0-700676	DISCHARGE DOOR VM6020
A	1	33PH2-3480	3/8-3000 PSI * 348, 9/16-18 FEMALE & 9/16-18 M 90 * SWIVEL
B	1	33PH2-3720	3/8-3000 PSI * 372, 9/16-18 FEMALE & 9/16-18 M 90 * SWIVEL
C	2	33PH2-1040	3/8-3000 PSI * 108, 9/16-18 STRAIGHT, BOTH ENDS

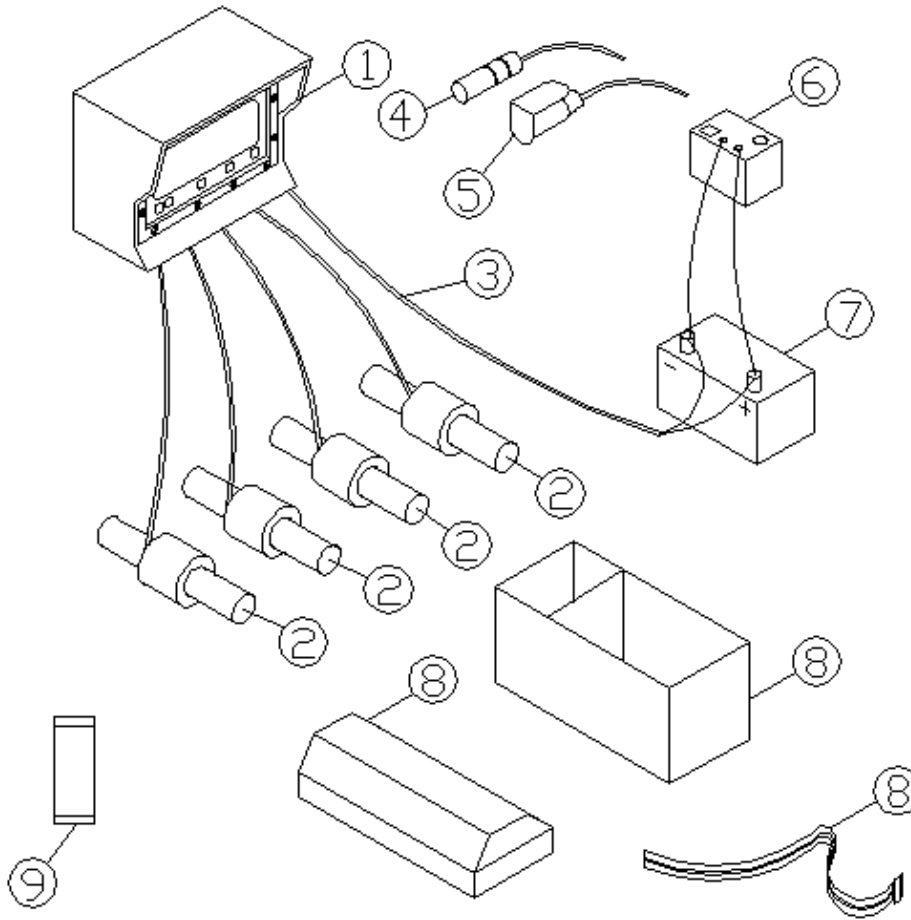
HYDRAULICS – DISCHARGE CONVEYOR

VM-200220



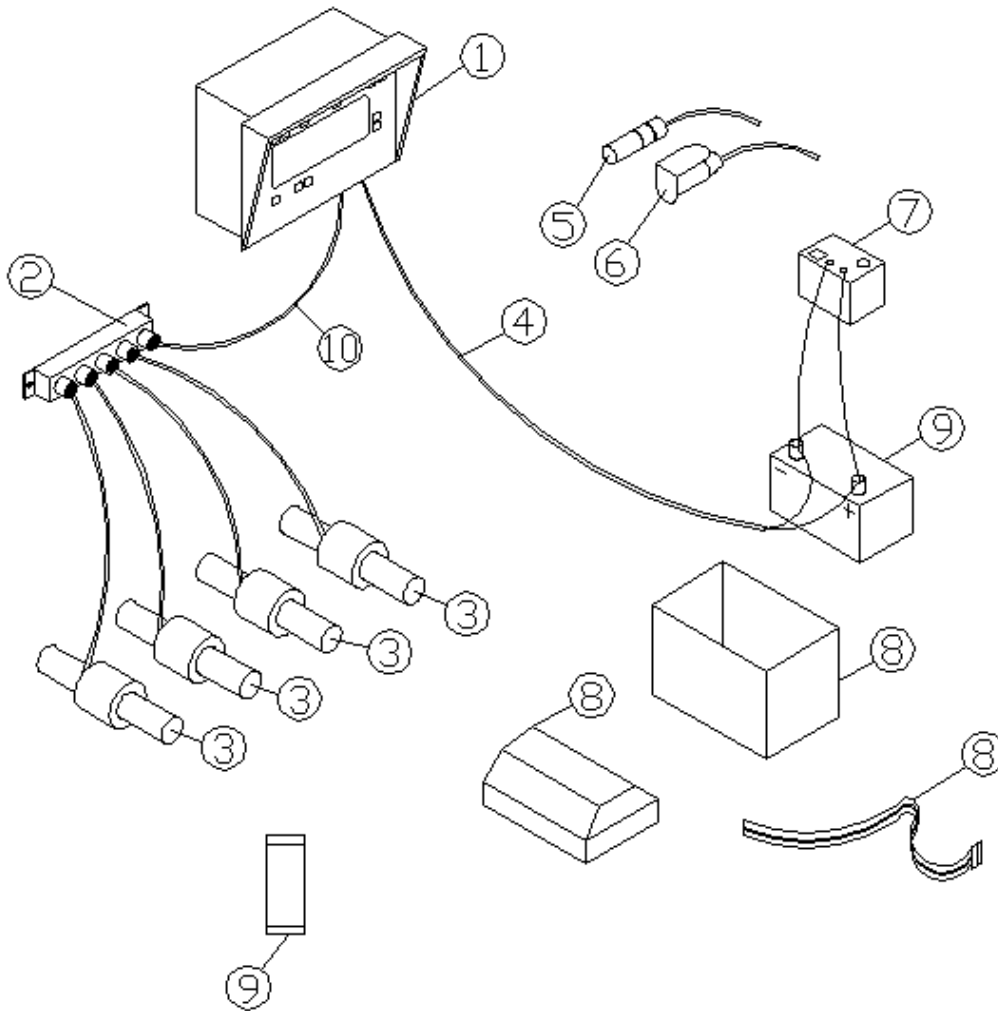
ITEM	QTY	PART NUMBER	DESCRIPTION
1	1	33E00-2530	HYD CYLINDER, 2 1/2 * 30, SAE #8 PORTS
2	1	33PH2-0740	3/8-3000 PSI * 78, 9/16-18 STRAIGHT & 9/16-18 90 DEG
3	3	33PH2-0481	3/8-3000 PSI * 48, 9/16 -18 STRAIGHT & 9/16 -18 90 DEG
4	1	33L01-1600	RELIEF VALVE, 1500 PSI (3) 3/4-16 O/R OPENING
5	2	33PH2-1040	3/8-3000 PSI * 108, 9/16-18 STRAIGHT, BOTH ENDS
6	2	33PH2-1322	3/8-3000 PSI * 132, 9/16-18 90 & 9/16-18 STRAIGHT
7	2	33HT6408-6	9/16-18 O-RING HEX HEAD PLUG
8	2	33F00-1209	HYD HEADER MANIFOLD,(2) 3/4 O/R PORT,(2) 9/16 O/R PORT
9	1	33L00-1009	CHECK VALVE 7/8-14 'O' RING MALE-FEMALE 8 GPM
11	1	33E00-0208	HYD CYLINDER, 2 * 8, SAE #8 O/R PORTS
12	2	33PH2-0481	3/8-3000 PSI * 48, 9/16 -18 STRAIGHT & 9/16 -18 90 DEG
	2	33PH2-0740	3/8-3000 PSI * 78, 9/16-18 STRAIGHT & 9/16-18 90 DEG
	2	33HT2403-6	9/16-18 TO 9/16-18 JIC UNION
13	1	33L00-1014	CHECK VALVE WITH RESTRICTOR, 1/16 ORIFICE, #8 O-RING PORTS
14	1	33BAG-0000	HYD MOTOR, 11.9 CU IN
15	1	33PH2-3720	3/8-3000 PSI * 372, 9/16-18 FEMALE & 9/16-18 M 90 * SWIVEL
16	1	33PH2-3480	3/8-3000 PSI * 348, 9/16-18 FEMALE & 9/16-18 M 90 * SWIVEL
17	13	33HT6400-6-8	9/16-18 ORFS TO 3/4-16 O-RING 37^ JIC
18	2	33HT6400-6	9/16-18 37^ JIC TO 9/16-18 O-RING
19	1	33HT6400-6-10	9/16-18 37^ JIC TO 7/8-14 O-RING
20	1	33HT6403-8-10	3/4-16 MALE O-RING TO 3/4-16 MALE O-RING UNION
21	1	33HT6403-8-8	3/4-16 MALE O-RING TO 3/4-16 MALE O-RING UNION
22	2	33QPC-4000	PIONEER COUPLER, MALE TIP 3/4 O/R
23	1	33HT6803-6-6-8	9/16-18 & 9/16-18 MALE TO 3/4-16 O-RING BRANCH TEE
24	1	33HT6801-6-8	9/16-18 TO 3/4-16 O-RING 90^ STR THREADED ELBOW CONN

ELECTRONIC SCALE – WEIGH TRONIX
[VM-200230](#)



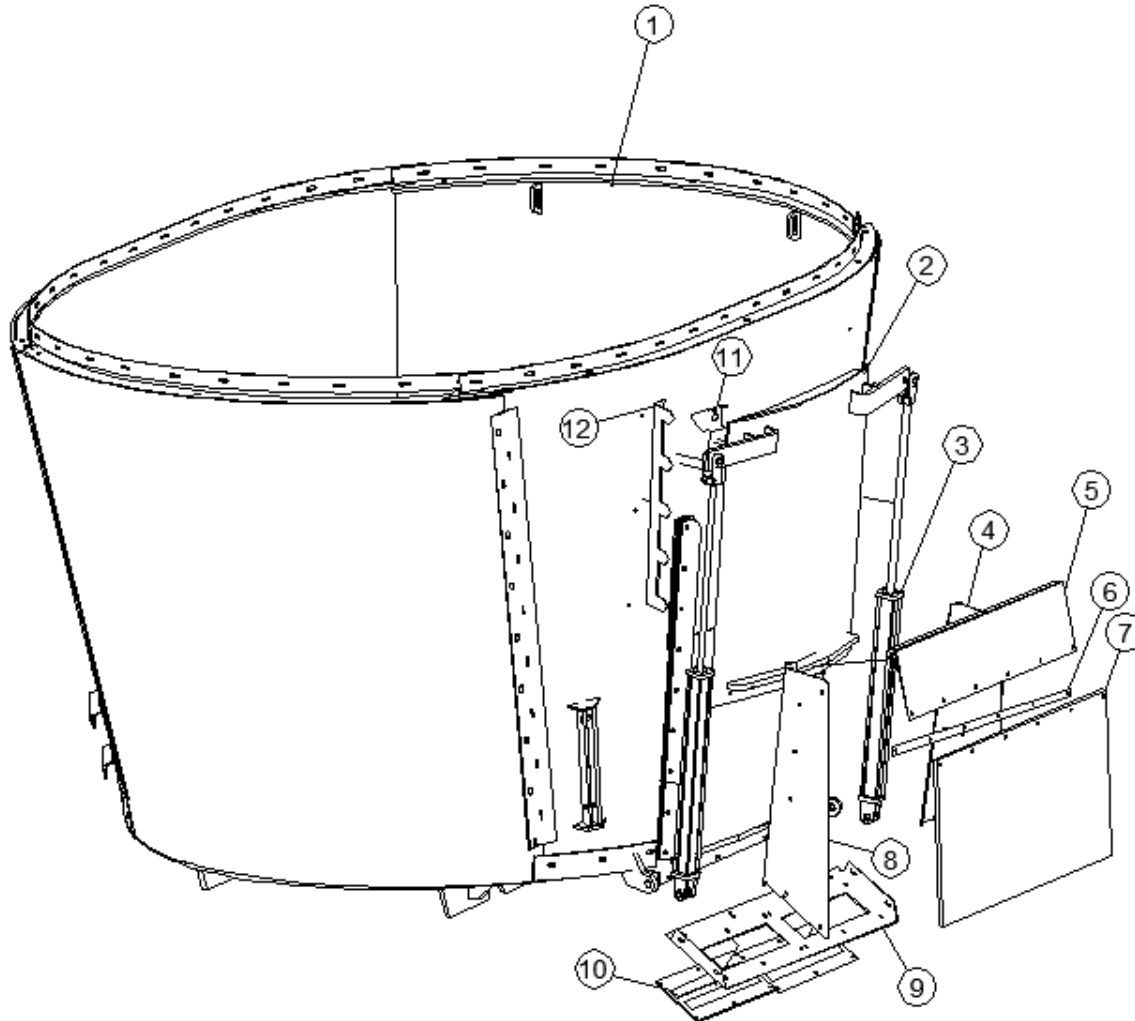
ITEM	QTY	PART NUMBER	DESCRIPTION
1	1	32W64-640X	W-T INDICATOR MODEL 640XL W/REMOTE PORT 5-PIN GA 2.500
	1	32WRD-40XL	RD40XL LARGE REMOTE DISPLAY 30' CABLE
2	4	32W1T-5430	TRUCK MOUNT W/B, 2 1/8 OD GA 2.125, 5 PIN 30' CORD
3	1	32WPC-2018	POWER CORD 12V, DIGITAL 2PIN, TO BATTERY
	1	32WPC-2008	POWER CORD 12V, 2 PIN, FOR WEIGH-TRONIX
4	1	32WPC-2030	POWER CORD 12V, 2 PIN, FOR WEIGH-TRONIX, TO TRACTOR
5	1	32WPC-0000	W-T QUICK DETACH PLUG-IN
6	1	32B00-1002	1 1/2 AMP BATTERY CHARGER
7	1	32B00-0990	MARINE BATTERY, 12 VOLT W/ACID & CHARGE (SMALLER UNIT)
8	1	32B00-1004	PLASTIC BATTERY BOX, 11 * 7 1/2 * 8 3/4
9	4	0-700596	WEIGHBAR SPACER TUBE 2 1/2 OD * 1 25/32 ID * 1 1/2
		0-700597	WEIGHBAR SPACER TUBE 2 3/4 OD * 2 5/32 ID * 1 1/2

ELECTRONIC SCALE – DIGI-STAR
VM-200240



ITEM	QTY	PART NUMBER	DESCRIPTION
1	1	32J40-V240	DIGI-STAR EZ VIEW 2400 INDICATOR W/REMOTE PORT
2	1	32WJB-5000	WEIGH TRONIX J-BOX, 5-PIN TO 5 PIN
3	4	32W1T-5430	TRUCK MOUNT W/B, 2 1/8 OD GA 2.125, 5 PIN 30' CORD
	4	32W4T-5430	TRUCK MOUNT WB, 2 1/2 OD GA 2.500, 5-PIN 30' CORD
4	1	32JPC-4011	POWER CORD, 4 PIN, F/POWER PAK
5	1	32JPC-4027	POWER CORD, 4 PIN, 27', F/POWER PAK
6	1	32WPC-0000	W-T QUICK DETACH PLUG-IN
7	1	32B00-1002	1 1/2 AMP BATTERY CHARGER
8	1	32B00-1004	PLASTIC BATTERY BOX, 11 * 7 1/2 * 8 3/4
9	1	32B00-0990	MARINE BATTERY, 12 VOLT W/ACID & CHARGE (SMALLER UNIT)
10	1	32WJB-5400	W-T TO DIGI-STAR, 15' J-BOX CORD 5 PIN TO 4 PIN
11	4	0-700596	WEIGHBAR SPACER TUBE 2 1/2 OD * 1 25/32 ID * 1 1/2
	4	0-700597	WEIGHBAR SPACER TUBE 2 3/4 OD * 2 5/32 ID * 1 1/2

SIDE DISCHARGE VM4020/5020 MIXER TUB ASSEMBLY
[VM-200250](#)



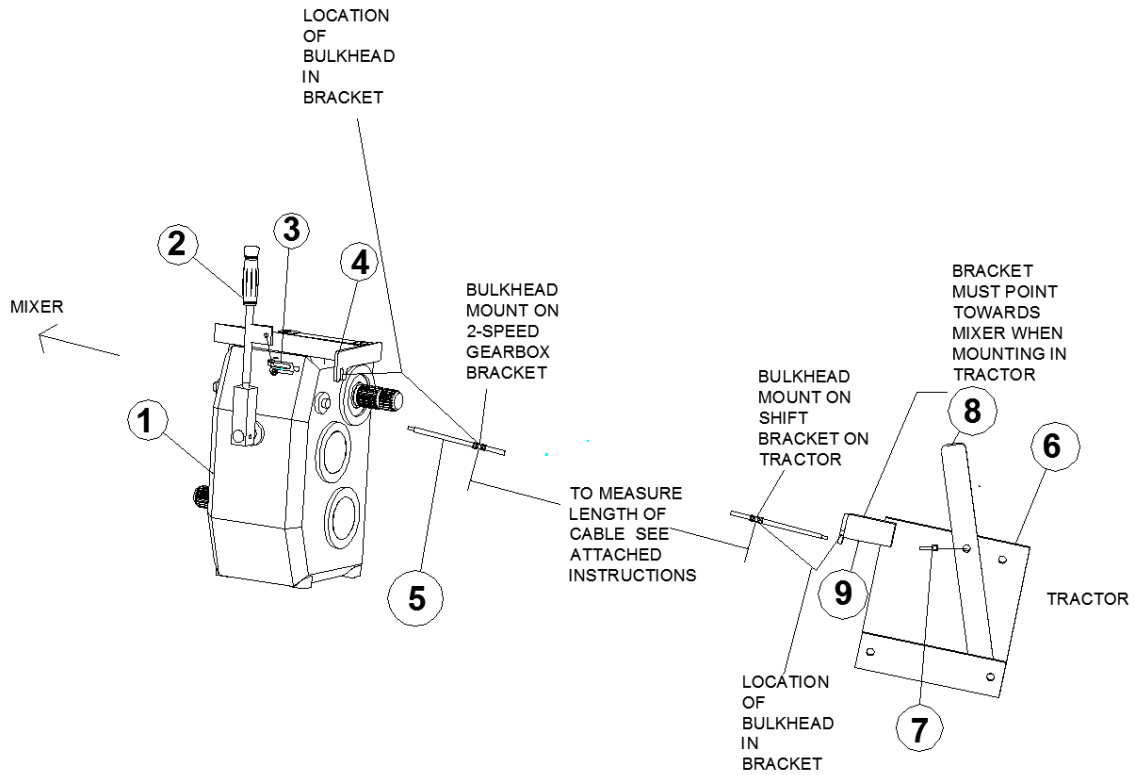
ITEM	QTY	PART NUMBER	DESCRIPTION
1	1	0-700482	TUB ASSEMBLY, SIDE DISCHARGE, V5020, COMER
	1	0-700481	TUB ASSEMBLY, SIDE DISCHARGE, V4020, COMER
2	1	0-700594	DOOR ASSY, SIDE DISCHARGE 35 3/4 * 42 WIDE
3	2	33E00-0230	HYD CYLINDER, 2 * 30, 3/4-16 O/R PORTS
4	1	0-700450-R	DISCHARGE SLIDE CHUTE CONVEYOR SIDE 10 GA * 14 3/4 * 37 3/8
5	1	0-700023	SLIDE CHUTE SWING SHIELD 10 W * 41 1/2 L
6	1	0-700190	VM SWING SHIELD HOLDING STRAP 10 GA * 1 1/4 * 41 1/2
7	1	42000-2441	VM RUBBER SWING SHIELD, 1/2 MASTICATED * 24 * 41 1/2
8	1	0-700450-L	DISCHARGE SLIDE CHUTE CONVEYOR SIDE 10 GA * 14 3/4 * 37 3/8
9	1	0-700270	DISCHARGE SLIDE CHUTE BOTTOM SS, 7 GA * 12 * 46
10	2	45000-0820	MAGNET, 8 1/2 * 19 1/2, STAINLESS
11	1	0-700085	VERTICAL MIXER DOOR GAUGE 14 GA * 5 * 6
12	1	0-700035	DOOR GAUGE VERTICAL 12 GA * 6 1/2 * 30

INSTRUCTIONS FOR MEASURING CABLE FOR 2-SPEED GEARBOX MECH. SHIFTER

1. The tractor universal shift handle bracket and the corresponding 2-speed gearbox bracket are designed **specifically for Teleflex Morse Controls Blak-Jaket Cables, 40 Series (1/4-1/4-28 thread), with 4" stroke travel.**
2. To order the correct length cable, the overall length is needed.
3. First, plan the route of the shift cable to the shift handle bracket location on the tractor. Avoid sharp bends in the shift cable.
4. Next, measure from the bulkhead mount on the 2-speed gearbox to the Bulkhead mount on the shift handle bracket on the tractor.
IMPORTANT: Add additional cable length for turning without stretching the cable tight, breaking the cable, crimping the cable or damaging the brackets.
5. Next, add 18" to the measurement arrived at in step 4. This is the "overall length" measurement needed to order the shift cable for that particular application. The ends required on the shift cable to complete are Teleflex Morse part no. A41134 Terminal (1/4-28 thd.) and Teleflex Morse part no. A45985 Clevis (1/4-28thd.). The terminal goes on the tractor end of the cable, attaching to the shift handle bracket on the tractor.
6. With this information, the Schuler Mfg. parts department can get a price quote for you and order the shift cable with your approval.
7. Shift cables are customer made-to-order and may not be returned.
8. Shift cables are not covered under the Schuler machine warranty, nor is damage to the brackets caused by the shift cable.

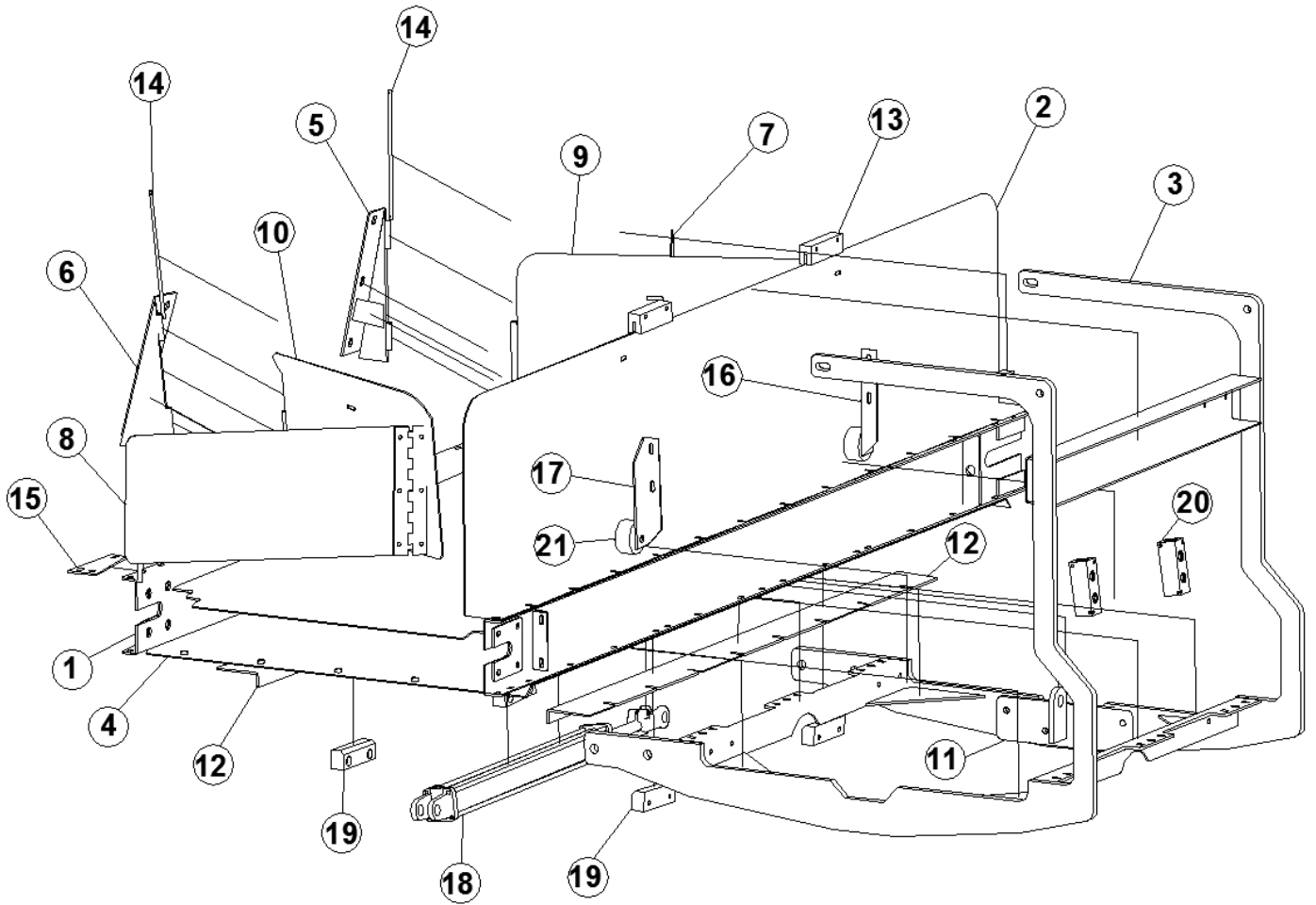
2-SPEED SHIFT CABLE OPTION

VM-200260



ITEM	QTY	PART NUMBER	DESCRIPTION
1	1	26S24-5367	GEARBOX 2-SPEED, 1:5 TO 1:1 WITH 1 3/4-20 INPUT AND OUTPUT
2	1	0-700752	TWO SPEED CABLE SHIFTING ROD ASSY
3	1	35045-0000	CLEVIS, 1/4-28 THREAD
4	1	700753	TWO SPEED CABLE SHIFTING ANGLE ASSY
5	1		CABLE
6	1	700756	TWO SPEED CABLE SHIFT CAB MOUNT
7	1	35040-0000	TERMINAL EYE, 1/4-28
8	1	0-700754	TWO SPEED CABLE SHIFT LEVER, 1/4 * 1 1/2 * 16
9	1	0-700755	TWO SPEED CABLE SHIFT MOUNTING BKT, 3/16 * 3 7/8 * 12

HYD. SIDE SHIFT DUAL DISCHARGE 81X CHAIN
[VM-200270](#)



HYD. SIDE SHIFT DUAL DISCHARGE 81X CHAIN

ITEM	QTY	PART NUMBER	DESCRIPTION
1	1	0-700725	FRONT DIS DUAL DIRECTION CONVEYOR, 101 OAL, 81X CHAIN
2	1	0-700749	DUAL DISCHARGE FRONT SHIELD , 12 GA * 23 3/4 * 101
3	1	0-700659	FRONT CONVEYOR CRADDLE, FOR HYD SIDE SHIFT
4	1	0-700668	SLIDE SHIELD BOTTOM CONVEYOR WELDMENT
5	1	0-700665-L	SHIELD MOUNT BRACKET WELDMENT, LH
6	1	0-700665-R	SHIELD MOUNT BRACKET WELDMENT, RH
7	1	0-700666-L	SWING SHIELD SLIDING CONVEYOR WELDMENT, LH
8	1	0-700666-R	SWING SHIELD SLIDING CONVEYOR WELDMENT, RH
9	1	0-700667-L	SWING SHIELD SLIDING CONVEYOR ASSY
10	1	0-700667-R	SWING SHIELD SLIDING CONVEYOR ASSY
11	1	0-700669	CYLINDER BRACKET BOLT ON WELDMENT
12	2	0-700664	BOTTOM SLIDE PLATE SLIDING CONVEYOR, 7 GA * 5 1/2 * 66
13	2	0-700660	SLIDE BLOCK 1 1/4 UHMW * 1 3/4 * 6
14	2	0-700682	SHIELD HINGE ROD 5/16 CRR * 12
15	2	0-700662	SLIDING CONVEYOR SHIELD END HINGE BKT, 7 GA * 3 * 7 3/4
16	1	0-700663-L	SLIDING CONVEYOR ROLLER ANGLE, 7 GA * 3 1/2 * 10
17	1	0-700663-R	SLIDING CONVEYOR ROLLER ANGLE, 7 GA * 3 1/2 * 10
18	1	33E00-0224	HYD CYLINDER, 2 * 24, SAE #8 O/R PORTS
19	4	0-700661	SLIDE BLOCK 1 1/4 UHMW * 1 3/4 * 6
20	2	33F00-1209	HYD HEADER MANIFOLD,(2) 3/4 O/R PORT,(2) 9/16 O/R PORT
21	2	0-700781	IDLER, NYLON, W/BUSHING, 5/8 B * 3 OD * 1 1/2+