

PARTS MANUAL

MODELS VM2820

!!!WARRANTY REGISTRATION INSIDE MUST BE COMPLETED AND RETURNED WITHIN 15 DAYS OF INVOICE SALE DATE OR WARRANTY IS REDUCED!!! DON'T LOSE YOUR FULL WARRANTY!!!



SCHULER MFG. & EQUIP. CO., INC.

63724 RICHLAND ROAD

GRISWOLD, IOWA 51535

PHONE - 712-774-2228

FAX - 712-774-2230

E-mail: schuler@schulermfg.net

Web Page: www.schulermfg.net

VM2820 Serial No.'s Ending in 101 and up

Date of Purchase

Model Number

Serial Number

Checked at Factory By

IMPORTANT NOTICE

*It is essential to return the White Copy of the
PURCHASER'S WARRANTY REGISTRATION
(located inside of the manual)
to Schuler Mfg. & Equip. Co., Inc., to validate the
machine warranty.*

MANUAL REVISIONS

PRINTING DATE: NOVEMBER, 2011

PRICE: \$7.00

CONTENTS

VM2820

PARTS

When Ordering Parts.....	1
Safety and Operational Decals.....	2-3
Mixer Tub Assembly.....	4-5
PTO Drivelines & Transfer Box.....	6-7
Dual Discharge Conveyor 119" & 101".....	8-10
Discharge Conveyor.....	11-12
Fold-Up Extension-25".....	13-14
Fold-Up Extension-40".....	15-16
Front Discharge Conveyor Rubber Spout.....	17
Magnet Spout Assembly.....	18
Transfer Box.....	19
2-Speed Gearbox.....	20
VM2820 Frame.....	21-22
Spindle.....	23
Tires & Wheels.....	24
Tires & Wheels (Option).....	25
VM5020-4020-2820 Wiring Diagram.....	26
Hydraulics Discharge Conveyor.....	27
Electronic Scale – Weigh Tronix.....	28
Electronic Scale – Digi-Star.....	29
Side Discharge Tub Assembly (Option).....	30
2-Speed Gearbox Instructions.....	31
2-Speed Shift Cable Option.....	32

WHEN ORDERING PARTS

Always have the following information available for phone orders or included in your written order.

1. **Machine Model**
2. **Serial Number**
3. **A general parts description can be very helpful to insure shipping the correct part. Often the customer does not know the part number, or has read the wrong number from the manual. Asking the following questions, where applicable, can help eliminate many questions on what the customer needs.**
 - a. **Number of teeth on sprocket or gear.**
 - b. **Bore size / OD of part.**
 - c. **Length of part, flight, auger, etc.**
 - d. **Is pulley a cast spoke / steel stamping.**
 - e. **Any other questions that may be applicable.**
4. **Address all parts orders to:**

Schuler Mfg. & Equip. Co., Inc.
63724 Richland Rd
Griswold, IA 51535
5. **For phone orders call – 712-774-2228.**
 - a. **Collect Calls – Please be advised that Schuler Mfg. & Equip. Co., Inc. does not accept collect telephone calls.**

Schuler Mfg. & Equip. Co., Inc. takes pride in fast customer service. Same day parts shipments can be made on UPS if the order is called in before 10:00 AM and the parts are in stock.

All part descriptions and dimensions are reference to inches unless specified otherwise.

SAFETY AND OPERATIONAL DECALS

SAFETY AND OPERATIONAL DECALS

SAFETY DECALS ARE PLACED ON THE MIXER/FEEDER FOR THE PROTECTION OF THE OPERATOR OR ANY PERSON NEAR THE UNIT.

Be sure everyone who operates this equipment understands all the information, warning, caution, and danger decals.

Keep the decals CLEAN so they are readable. This applies to all caution, warning, and danger decals.

It is the OWNER'S RESPONSIBILITY to provide information for safe operation of this machine.

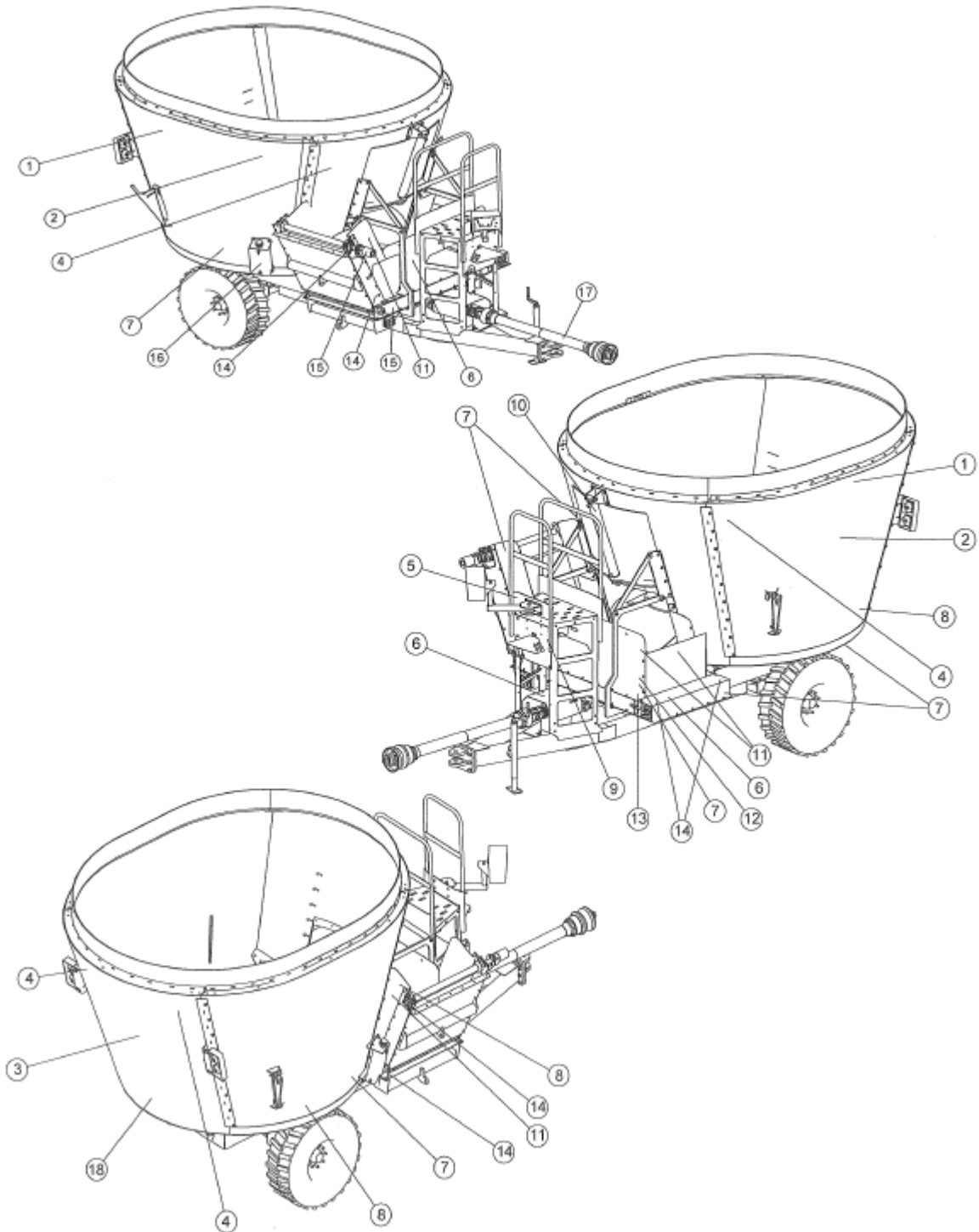
Replace any damaged or worn decals. Once any part of a decal becomes non-readable, it should be replaced. The part numbers for the decals are located in the lower RH corner of the decal, and listed in this manual on the following pages. Replacement decals may be ordered through your dealer or the address below.

When replacing decals, be sure the surface area is clean and dry, peel the backing off the decal, and apply to the machine. Be sure to wipe with a clean cloth to rub out all air bubbles to assure a good seal. For best adhesion, decals should be applied in temperatures of 50 degrees (F) or warmer.

DECALS

ITEM	QTY	PART NUMBER	DESCRIPTION
1	2	10010-0103	DECAL, SCHULER, 6 x 32
2	2	10010-0143	DECAL, SCHULER, VM4020
	2	10010-0144	DECAL, SCHULER, VM5020
	2	10010-0145	DECAL, SCHULER, VM6020
	2	10010-0147	DECAL, SCHULER, VM2820
3	1	10010-0100	DECAL, SCHULER, QUALITY BUILT
4	4	10010-0230	DECAL, DANGER, ROTATING AUGER HAZARD
5	1	10010-0664	DECAL, IMPORTANT, TIGHTEN WHEEL LUGS
6	3	10010-0225	DECAL, DANGER, DO NOT USE THIS SHIELD FOR STEP
7	4	10010-0921	DECAL, YELLOW REFLECTIVE TAPE
8	5	10010-0920	DECAL, RED REFLECTIVE TAPE
9	1	FEMA	DECAL, GREASE GUN, 50 HOURS
10	1	10010-0680	DECAL, O, 1,2,3,C
11	4	10010-0317	DECAL, WARNING, KEEP OUT MOVING PARTS, FAILURE TO HEED...
12	1	10010-0550	DECAL, VM OPERATING INSTRUCTIONS
13	1	10010-0421	DECAL, IMPORTANT, READ OPERATORS MANUAL
14	6	10010-0520	DECAL, GREASE GUN, 500 HOURS
15	2	10010-0340	DECAL, WARNING, HIGH PRESSURE FLUID HAZARD
16	1	10010-0663	DECAL, IMPORTANT, OIL LEVEL (SIGHT GAUGE)
17	1	10010-0210	DECAL, DANGER, PTO, ROTATING DEVICE
18	1	10010-0500	DECAL, SLOW MOVING VEHICLE
<u>VMMDL-1125 INCLUDES</u>			
	1	10010-0671	DECAL, IMPORTANT, USE ONLY HIGH SPEED AT 4000 LB. LOAD
	1	10010-0663	DECAL, IMPORTANT, OIL LEVEL (SIGHT GAUGE)
	1	10010-0662	DECAL, 2-SPEED GEAR PATTERN
	1	10010-0700	DECAL, 2-SPEED

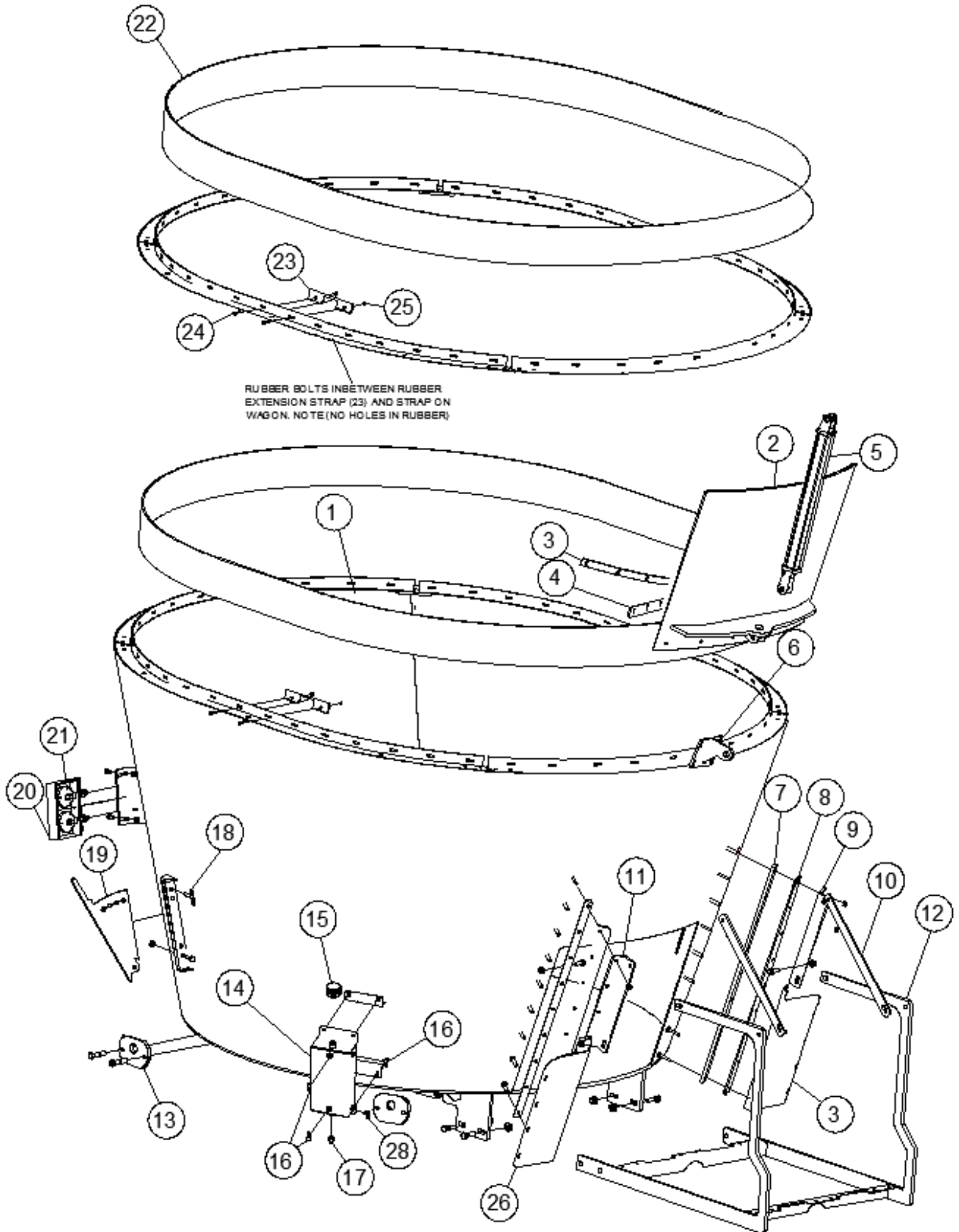
SAFETY DECALS



NOTICE: Immediately replace all worn or damaged decals. Please supply the unit's Serial Number with decal part number when ordering.

VM2820 MIXER TUB ASSEMBLY

[VM-000010](#)

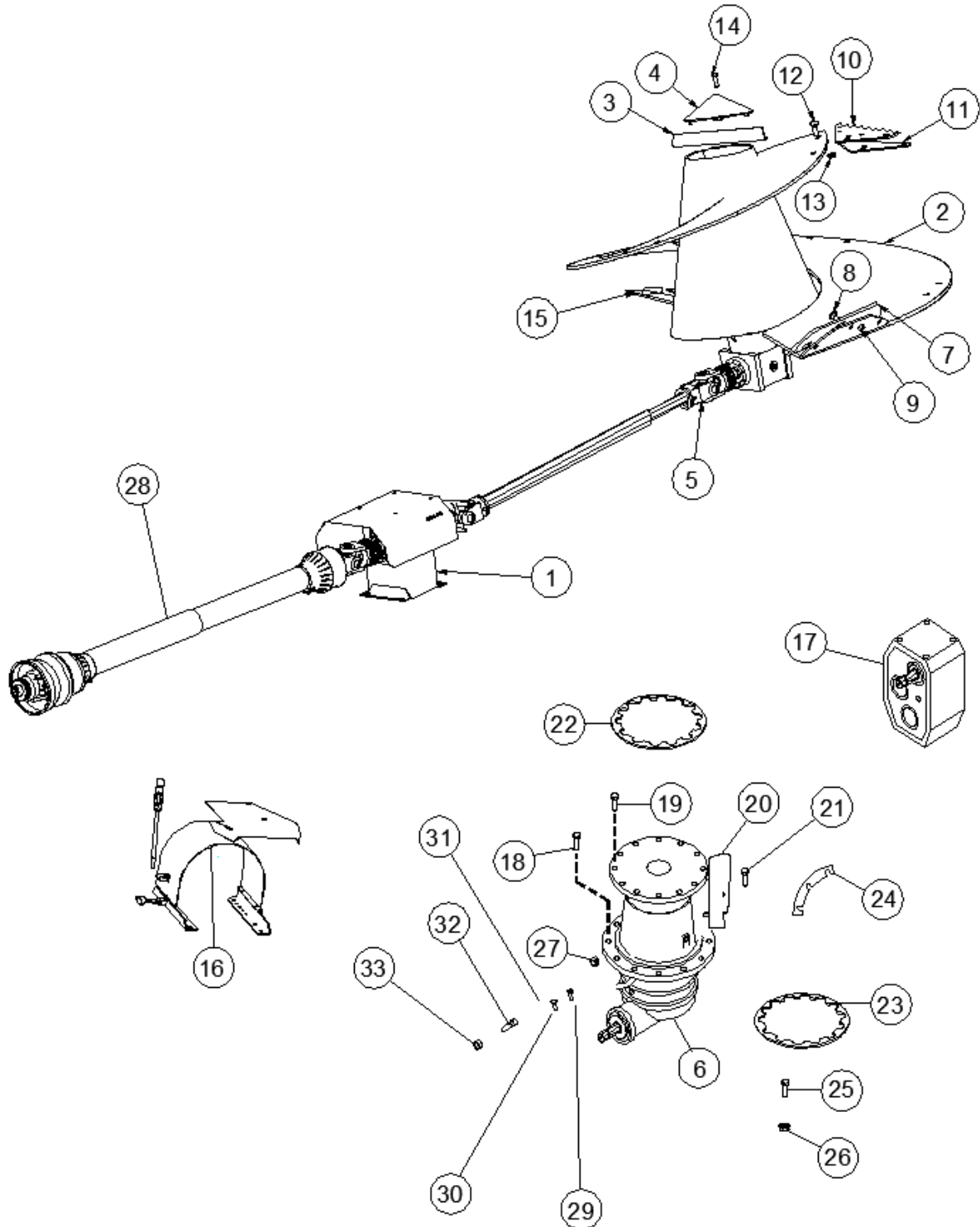


VM2820 MIXER TUB ASSEMBLY

ITEM	QTY	PART NUMBER	DESCRIPTION
1	1	0-700913	TUB ASSEMBLY, FRONT DISCHARGE, TRAILER, V2820, COMER
2	1	0-700915	DISCHARGE DOOR ASSY V2820
3	1	0-700390	FRONT DOOR SEAL STRAP 7 GA * 1 1/2 * 38 11/16
4	1	40002-0239	RUBBER SEAL TS DOOR, 2 1/8 * 38 5/8
5	1	33E00-0224	HYD CYLINDER, 2 * 24, SAE #8 O/R PORTS
6	1	0-700578	UPPER CYLINDER BRACKET, V875, V1050,V5020
7	2	0-700093	DOOR SPACER STRAP 5/8 * 1 1/2 * 50
8	2	0-700092	DOOR GUIDE STRAP 3/8 * 3 * 50
9	1	0-700393-L	CONVEYOR HANGER, 3/8 * 5 1/2 * 21 3/4
10	2	0-700394	CONVEYOR KNEEBRACE, 3/8 * 2 * 27 1/2
11	1	0-700393-R	CONVEYOR HANGER, 3/8 * 5 1/2 * 21 3/4
12	1	0-700387	FRONT CONVEYOR CRADDLE, FRONT DISCHARGE
13	4	0-700313	WEIGH BAR BRACKET FOR SRM 3/4 * 6 * 8
14	1	0-700351	OIL RESERVOIR, MULTI SCREW
15	1	26SPG-0001	FILLER CAP, PLANETARY RESERVOIR
16	3	33HT4290-6-4	3/8 ID HOSE BARB TO 90 DEG ELBOW 1/4-NPT MALE PIPE
17	1	33HT5406-P-12	3/4-NPT MALE HEX HEAD PLUG
18	2	73D00-1029	BALL, SPRING PIN, 5/8 DIA * 2 1/2
19	2	0-700379	HAY RESISTOR PLATE 1/2 * 11 5/8 * 18
20	2	0-700300	LIGHT KIT BRACKET, BOLT-ON, HOLDS TWO LIGHTS
21	1	10050-0010	LIGHT KIT FOR AG EQUIPMENT, W/ 30' HARNESS
26	1	0-700405-R	FRONT DISCHARGE DOOR SHIELD RH, 12 GA * 13 * 27 1/2
27	1	0-700405-L	FRONT DISCHARGE DOOR SHIELD LH, 12 GA * 13 * 27 1/2
28	1	33HT4290-8-4	1/2 ID HOSE BARB TO 90^ ELBOW 1/4-NPT MALE PIPE
OPTIONAL EXTENSION			
22	30	960B0-1200-000	2 PLY 220, 3/8 * 12 WIDE
23	22	0-700372	RUBBER EXTENSION STRAP, 1/4 * 2 * 12
24	44	70HC5-0512	5/16-18 * 1 1/2 HHCS, GRD 5, ZP
25	52	71UC2-0050	5/16-18 TOP LOCKNUT, ZP

PTO DRIVELINES, TRANSER BOX, SCREW
AND OPTIONAL 2-SPEED GEARBOX

VM-00020



**PTO DRIVELINES, TRANSER BOX, SCREW
AND OPTIONAL 2-SPEED GEARBOX**

ITEM	QTY	PART NUMBER	DESCRIPTION
1	1	VMMDL-1120	SINGLE SPEED DRIVE FOR PLANETARY, MS VERTICAL MIXERS
2	1	0-700905	SCREW ASSY, 2820
3	1	0-700792	CAP ANGLE, BOLT-ON, FOR 2820
4	1	0-700908	SCREW CAP FOR V360 & V2820
5	1	25B06-1135	PTO, 1 3/4-20 & 1 3/4-20, 2000 NM SHEAR SIZE 6, FOR COMER
		25B06-1135-8	PTO, 1 3/4-20 & 1 3/4-20, 2000 NM SHEAR SIZE 6, 2820 SIDE
6	1	26CPG-3239	COMER PGA 1602 1000 RPM (TOTAL 21:1 RATIO)
	1	26CPG-3238	COMER PGA 1602 540 RPM (TOTAL 13.4:1 RATIO) CHINA
7	2	0-700162	EDGE DEFLECTOR, 1/2 * 4 * 21 3/4
8	3	70CC5-1014	5/8-11 * 1 3/4 CARRIAGE HD, GRD 5, ZP
9	3	71UC2-0100	5/8-11 TOP LOCKNUT, ZP
10	5	0-700377	SHORT CUTTING KNIFE, 6.0 MM
11	5	0-700589	SMALL BACKING PLATE 1/2 * 6 * 13 3/8 / FITS PN#700377
12	10	70CC5-1018	5/8-11 * 2 1/4 CARRIAGE BOLT, GRD 5, ZP
13	10	71WC2-0100	5/8-11 FLANGE LOCKNUT, ZP
14	1	70HC5-1032	5/8-11 * 4 HHCS GRD 5, ZP
15	1	0-700906	BI PULSE LEG WITH KICKER, 1/2 * 4 BEVEL EDGE * 30
16	1	0-700734	VM SIDE DISCHARGE TWO-SPEED DRIVE SHIELD ASSY
17	1	26S24-5367	GEARBOX 2-SPEED, 1:5 TO 1:1 WITH 1 3/4-20 INPUT AND OUTPUT
18	12	70HC5-1024	5/8-11 * 3 HHCS, GRD 5, ZP
19	15	70HM8-1650	M16-2.0 * 50 HHCS, CLASS 8.8, ZP
20	1	0-700480	HOSE GUARD FOR 1603 COMER PLANETARY, 7 GA * 4 3/4 * 8 3/8
21	1	70HM8-1835	M18-2.5 * 35 HHCS, CLASS 8.8
22	1	0-700645	SCREW SHIM FOR 1603 COMER, 12 GA * 13 3/4 DIA.
23	2	0-700476	PLANETARY ADAPTOR PLATE 3/4 * 11 1/2 * 23
24	1	0-700642	PLANATARY SHIM, 16 GA * 2 * 16 1/4
25	12	70HM8-2490	M24-3.0 * 90 HHCS, CLASS 8.8, BLACK
26	12	71UM8-0240	M24-3.0 TOP NYLON INSERT LN CLASS 8.8, ZP
27	12	71UC2-0100	5/8-11 TOP LOCKNUT, ZP
28	1	25B06-1128	PTO COMPLETE, 1 3/8-21 & 1 3/4-20, SIZE 6, CV
	1	25B06-1138	PTO COMPLETE, 1 3/8-6 & 1 3/4-20, SIZE 6, CV 540 RPM
29	1	33HT5400-N-2-1.5	1/8-NPT MALE TO 1/8-NPT MALE PIPE NIPPLE 1.50" LONG
30	1	33HT5504-2	1/8-NPT FEMALE TO 1/8-NPT FEMALE ELBOW
31	1	33NH1-0720	1/8-3000 PSI * 72, (2) 1/8-NPT MALE ENDS
32	1	33HT1404-2-2	STEEL PIPE SWIVEL ADAPTOR 1/8-27 NPTF x 1/8-27 NPSM
33	1	74020-0000	1/8-NPT GREASE ZERK, STRAIGHT

DUAL DISCHARGE CONVEYOR 119" & 101"

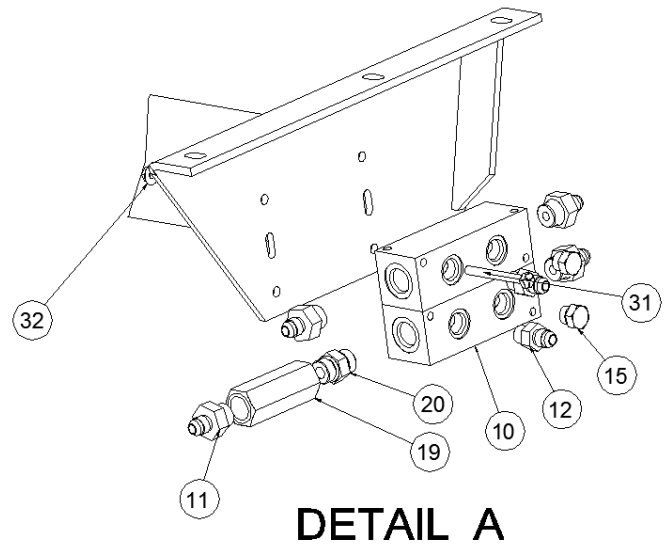
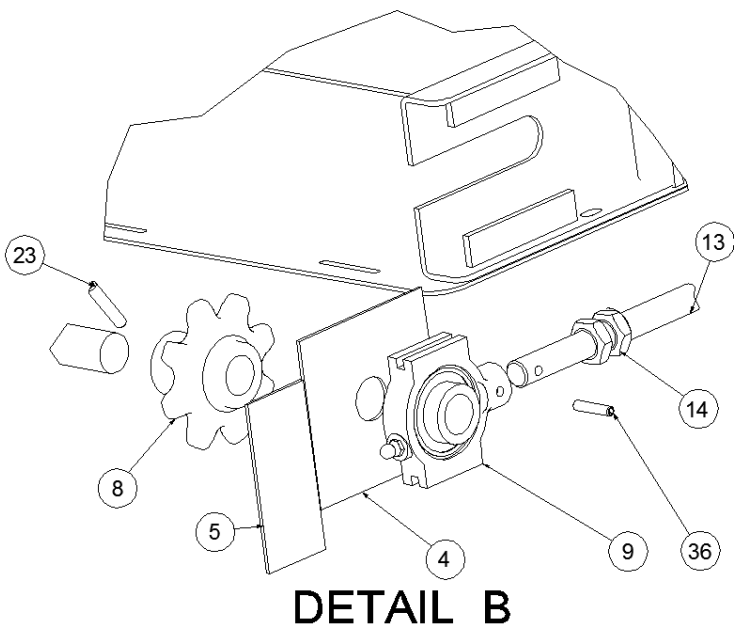
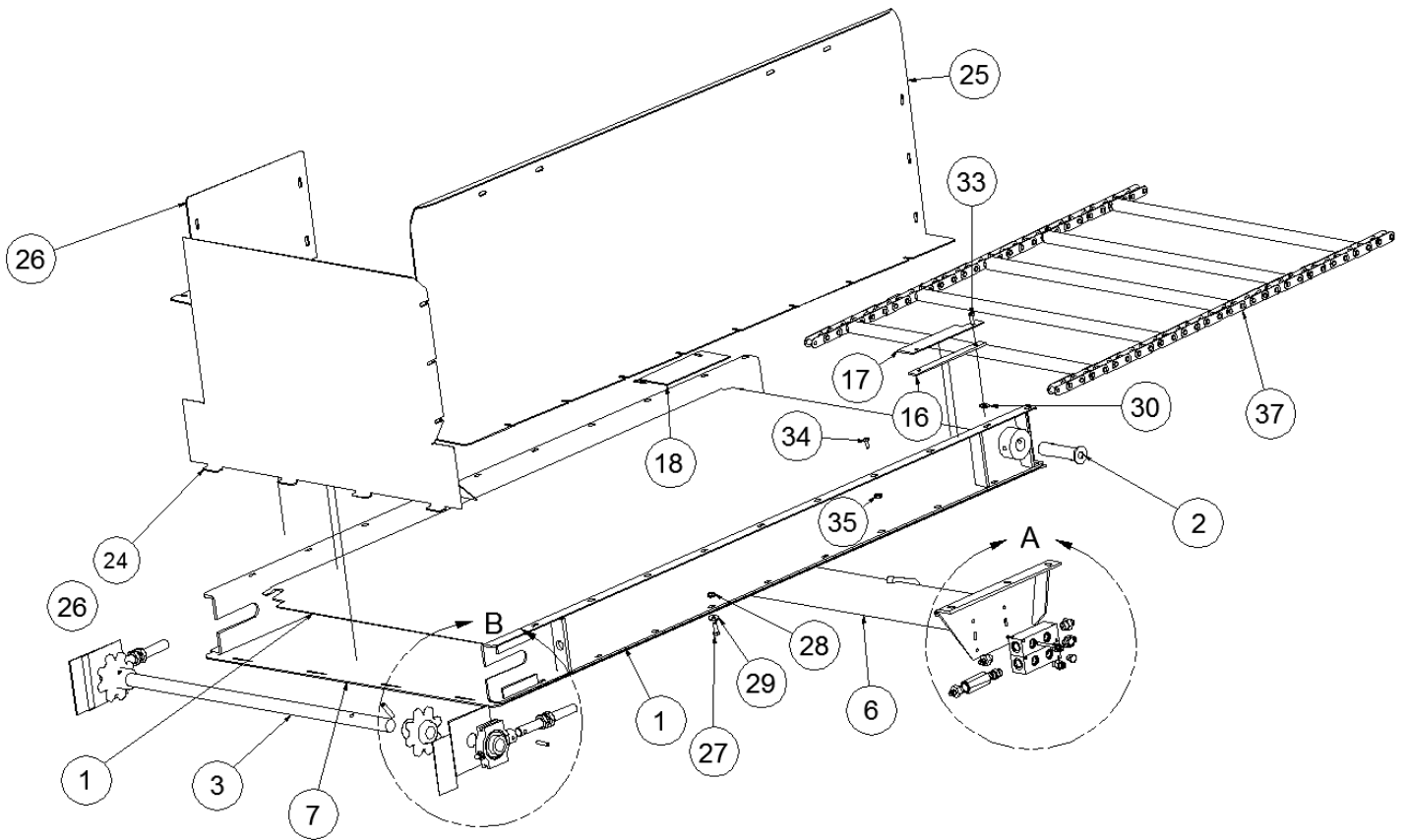
ITEM	QTY	PART NUMBER	DESCRIPTION
1	1	0-700421	FRONT DISCHARGE DUAL DIRECTION CONVEYOR, 119 OAL
1	1	0-700567	FRONT DISCHARGE DUAL DIRECTION CONVEYOR, 101 OAL
2	1	0-700423	DUAL DISCHARGE CONVEYOR BOTTOM 10 GA * 39 1/2 * 108
2	1	0-700565	DUAL DISCHARGE CONVEYOR BOTTOM 10 GA * 39 1/2 * 92
3	1	0-700429	DUAL DISCHARGE FRONT SHIELD , 12 GA * 23 3/4 * 117
3	1	0-700566	DUAL DISCHARGE FRONT SHIELD , 12 GA * 23 3/4 * 101
4	1	0-700430	DUAL DISCHARGE REAR SHIELD , 12 GA * 17 3/4 * 36 1/2
5	4	16C10-0810	SPKT CAST, 8T, 1 1/4 B, 3/8 PH
6	1	33BAG-0000	HYD MOTOR, 11.9 CU IN
7	2	70FC5-1464	7/8-9 * 8, THREADED STUD WITH PINHOLE, B7
8	1	26000-1000	SHAFT COUPLER, 1 5/8 OD * 1 ID * 3 OAL, 1/4 KW PN #511450
9	2	17400-2210	BRG 4-BOLT CAST, 1 1/4 B, III LIP SEAL, 3 5/8 HOLE CENTER
10	2	17700-0010	BRG TAKE UP , 1 1/4 BORE
11	2	33HT6400-6-10	9/16-18 37^ JIC TO 7/8-14 O-RING
13	1	0-700557	SHAFT, FOLD UP EXT DRIVE, 1 1/4 CRR * 43 5/8-CA557 CHAIN
14	1	0-700416	SHAFT, FRONT CONVEYOR IDLER, 1 1/4 CRR * 40 5/8 CA557 CHAIN
15	1	33BA0-0008	WOODRUFF KEY, AB, AC, AE MOTOR
16	1	0-700413	SHAFT TUBE COVER 2 SCH 40 PVC PIPE * 32 3/8
17	1	0-700422	FRONT DUAL DISCHARGE SLIDER
18	1	0-700404	DRIVE SHAFT SLOT COVER , 12 GA * 4 5/8 * 4 5/8
19	1	0-700548	HYD MOTOR MOUNT, BOLT-ON
20	26	70HC5-0606	3/8-16 * 3/4 HHCS, GRD 5, ZP
21	26	71WC2-0060	3/8-16 FLANGE LOCKNUT, ZP
22	8	70BH5-0812	1/2-13 * 1 1/2 BUTTON HD SOCKET CAP SCREW, ZP, GRD 5
23	8	71WC2-0080	1/2-13 FLANGE LOCKNUT, ZP
24	4	73S00-0616	3/8 * 2 SPIROL PIN, HBK
25	1	0-130212	KEY, 1/4 CD * 1 1/4
26	28	72FH0-0060	3/8 FLAT WASHER, ZP
27	4	72LH0-0060	3/8 SPLIT LOCK WASHER, ZP
28	4	70HC5-0610	3/8-16 * 1 1/4 HHCS, GRD 5, ZP
29	34	72FH0-0050	5/16 FLAT WASHER, ZP
30	34	70HC5-0506	5/16-18 x 3/4 HHCS, GRADE 5
31	34	71WC2-0050	5/16-18 FLANGE LOCKNUT, ZP
32	1	0-700397	FRONT DISCHARGE CONVEYOR CHAIN, CA557
	2	23x81-090A	81X CONVEYOR CHAIN, 90 PITCH INC CL, 22 ATT (2 PER ASSY)
33	1	0-700431	DUAL DISCHARGE REAR SIDE SHIELD , 12 GA * 17 3/4 * 36 1/2
34	1	0-700453	CONVEYOR MOTOR MOUNT 3/8 * 8 * 8
35	1	0-700454	CONVEYOR MOTOR MOUNT ASSY
36	8	72M10-0014	MACHINE BUSHING, 5/8 ID * 1 1/8 OD * 14 GA, ZP
37	2	71JC2-0140	7/8-9 JAM NUT, ZP
38	2	73E00-0410	1/4 * 1 1/4 SPRING PIN, ZP
39	2	33PH2-1621	3/8-3000 PSI * 165, 9/16-18 STRAIGHT BOTH ENDS
40	2	33QPC-4000	PIONEER COUPLER, MALE TIP 3/4 O/R
41	2	73S00-0512	5/16 * 1 1/2 SPIROL PIN, HBK
42	2	17951-1210	BRONZE BUSHING W/ FLANGE, 1 1/2 OD * 1 1/4 ID * 1 3/4
DISCHARGE CONVEYOR CHAIN PARTS			
1		700447	FLIGHT, VM CONVEYOR FRONT DISCHARGE W/ 4-23C01-00CL, CA557 CL
1		23C01-00CL	CA-557 CL
1		23C01-00HL	CA-557 OL
1		23C01-00RL	CA-557 ROLLER LINK
81X CHAIN PARTS			
		23X81-00CL	81X CONNECTOR LINK
		23X81-00HL	81X OFFSET LINK
		23X81-00RL	81X ROLLER LINK
		0-700701	CONVEYOR CHAIN FLIGHT, 1 1/4 * 1 1/4 * 1/4 * 28 1/4

DUAL DISCHARGE CONVEYOR 119" & 101"

ITEM	QTY	PART NUMBER	DESCRIPTION
1	1	0-700725	FRONT DIS DUAL DIRECTION CONVEYOR, 101 OAL, 81X CHAIN
1	1	0-700726	FRONT DUAL DISCHARGE CONVEYOR, 119 OAL, 81X CHAIN
33	1	0-700579-L	DUAL DISCHARGE REAR SHIELD LH, 12 GA * 17 3/4 * 24
4	1	0-700579-R	DUAL DISCHARGE REAR SHIELD RH, 12 GA * 17 3/4 * 24
5	4	16C30-0610	SPKT 81XB6, 6T, 1 1/4 B, 3/8 PH
6	1	33BAM-0000	HYD MOTOR, 18.0 CU IN
13	1	0-700702	SHAFT, FOLD UP EXT DRIVE, 1 1/4 CRR * 43 3/4, 81X CHAIN
14	1	0-700703	SHAFT, FRONT CONVEYOR IDLER, 1 1/4 CRR * 40 3/4, 81X CHAIN
17	1	0-700724	FRONT DUAL DISCHARGE SLIDER, 81X CHAIN
24	4	73S00-0622	3/8 * 2 3/4 SPIROL PIN, HBK
32	2	23X81-090A	81X CONVEYOR CHAIN, 90 PITCH INC CL, 22 ATT (2 PER ASSY)
42	2	17951-1210	BRONZE BUSHING W/ FLANGE, 1 1/2 OD * 1 1/4 ID * 1 3/4

DISCHARGE CONVEYOR

[VM-000040](#)

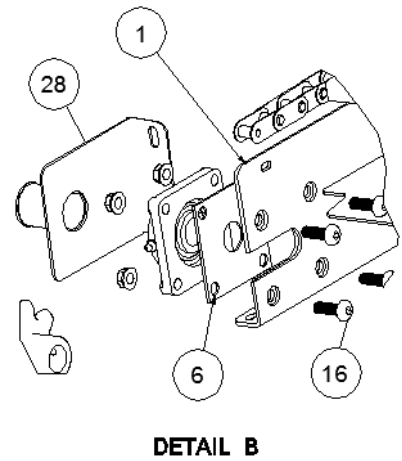
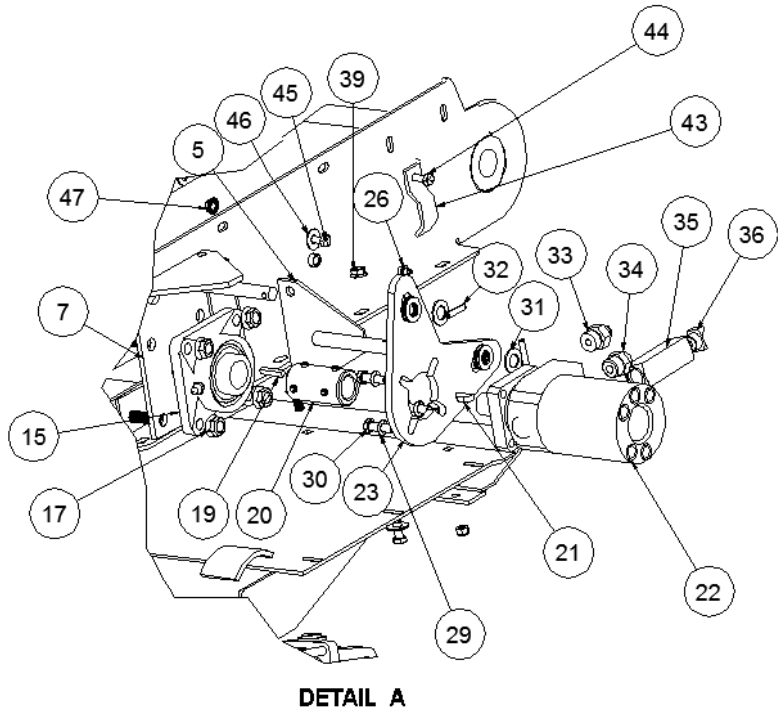
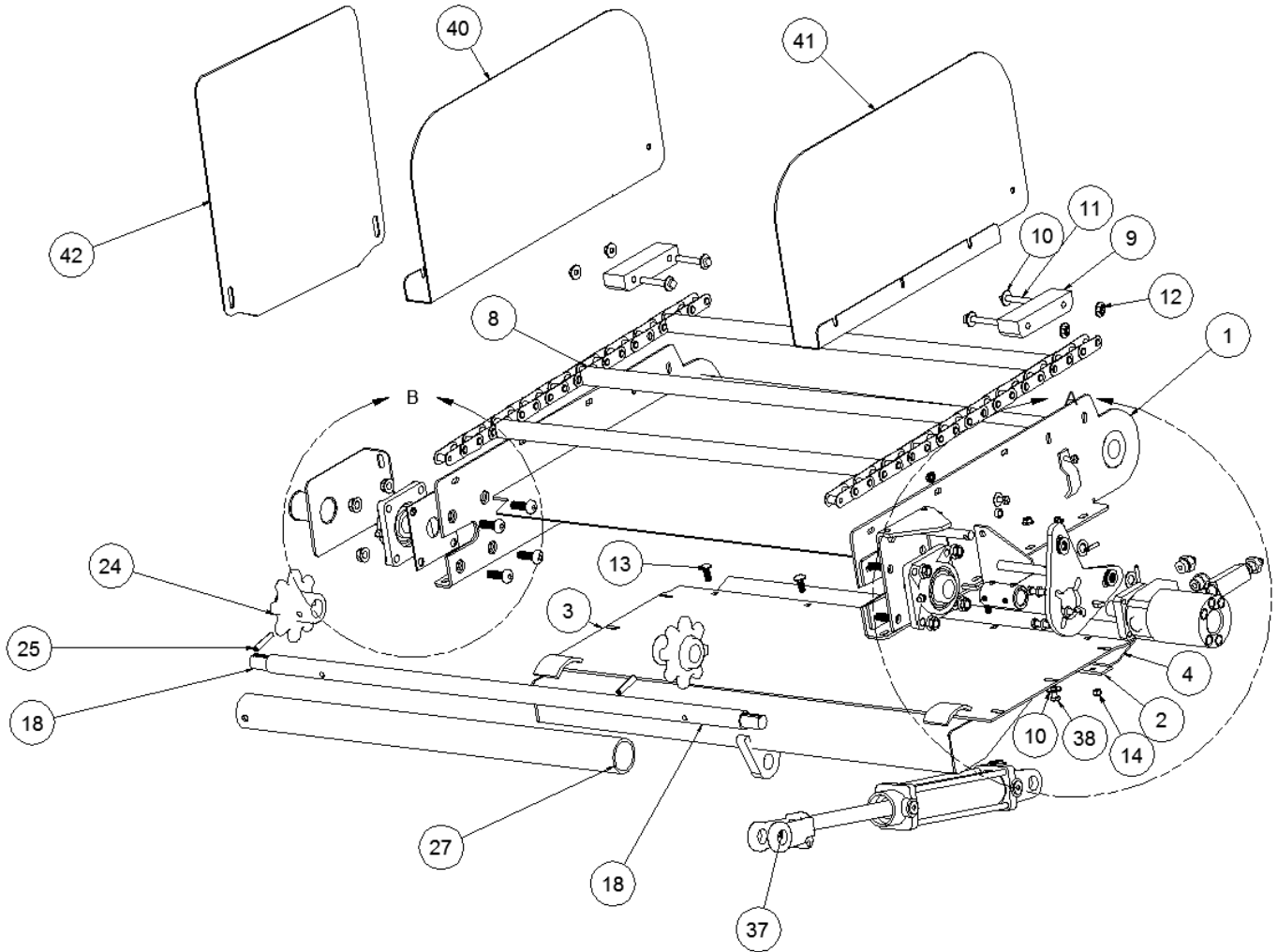


DISCHARGE CONVEYOR

ITEM	QTY	PART NUMBER	DESCRIPTION
1	1	0-700398	FRONT DISCHARGE CONVEYOR SINGLE DIRECTION CA 557
	1	0-700696	FRONT DISCHARGE CONVEYOR SINGLE DIRECTION 81X CHAIN
2	2	0-700412	CONVEYOR EXTENTION PIN
3	1	0-700416	SHAFT, FRONT CONVEYOR IDLER, 1 1/4 CRR * 40 5/8 CA557 CHAIN
	1	0-700703	SHAFT, FRONT CONVEYOR IDLER, 1 1/4 CRR * 40 3/4 , 81X CHAIN
4	2	0-700418	CONVEYOR SLOT COVER 1/8 UHMW * 5 1/2 * 5 1/2
5	2	0-700419	CONVEYOR SLOT COVER 1/8 UHMW * 2 1/2 * 5 1/4
6	1	0-700549	LOWER LIFT BRACKET ASSY FOR CONVEYOR TO LAY FLAT
	1	0-700733	LOWER LIFT BRACKET ASSY FOR CONVEYOR,TWO CYLINDERS
7	1	0-700554	FRONT DISCHARGE CONVEYOR BOTTOM 10 GA * 39 1/2 * 78
8	2	16C10-0810	SPKT CAST, 8T, 1 1/4 B, 3/8 PH
		16C30-0610	SPKT 81XB6, 6T, 1 1/4 B, 3/8 PH
9	2	17700-0010	BRG TAKE UP , 1 1/4 BORE
10	2	33F00-1209	HYD HEADER MANIFOLD,(2) 3/4 O/R PORT,(2) 9/16 O/R PORT
11	1	33HT6400-6-8	9/16-18 ORFS TO 3/4-16 O-RING 37^ JIC
12	4	33HT6400-6	9/16-18 37^ JIC TO 9/16-18 O-RING
13	2	70FC5-1464	7/8-9 * 8, THREADED STUD WITH PINHOLE, B7
14	4	71JC2-0140	7/8-9 JAM NUT, ZP
15	2	33HT6408-8	3/4-16 O-RING HEX HEAD PLUG
16	1	0-700438	SLIDE STRAP SPACER , 7 GA * 1 * 10
17	1	0-700439	SLIDE STRAP CAP , 7 GA * 2 * 10
18	1	0-700434	CHAIN COVER , 12 GA * 5 * 11 1/2
19	1	33L00-1014	CHECK VALVE WITH RESTRICTOR, 1/16 ORIFICE, #8 O-RING PORTS
20	1	33HT6403-8-8	3/4-16 MALE O-RING TO 3/4-16 MALE O-RING UNION
23	2	73S00-0616	3/8 * 2 SPIROL PIN, HBK
	2	73S00-0622	3/8 * 2 3/4 SPIROL PIN, HBK
24	1	0-700640	FRONT CONVEYOR BACK SHIELD ASSY, CA557 CHAIN
		0-700697	FRONT CONVEYOR BACK SHIELD ASSY FOR 81X CHAIN
25	1	0-700638	FRONT DISCHARGE SMALL SHIELD ,12 GA * 15 1/4 * 16
26	1	0-700639	FRONT SHIELD CONVEYOR , 12 GA * 28 1/4 * 69
27	20	70HC5-0608	3/8-16 * 1 HHCS, GRD 5, ZP
28	20	71WC2-0060	3/8-16 FLANGE LOCKNUT, ZP
29	20	72FH0-0060	3/8 FLAT WASHER, ZP
30	21	72FH0-0050	5/16 FLAT WASHER, ZP
31	4	70HC5-0420	1/4-20 * 2 1/2 HHCS, GRD 5, ZP
32	4	71WC2-0040	1/4-20 FLANGE LOCKNUT, ZP
33	2	70HC5-0510	5/16-18 * 1 1/4 HHCS, GRD 5, ZP
34	17	70HC5-0506	5/16-18 * 3/4 HHCS, GRD 5, ZP
35	18	71WC2-0050	5/16-18 FLANGE LOCKNUT, ZP
36	2	73S00-0512	5/16 * 1 1/2 SPIROL PIN, HBK
37	1	0-700397	FRONT DISCHARGE CONVEYOR CHAIN, CA557
	2	23X81-090A	81X CONVEYOR CHAIN, 90 PITCH INC CL, 22 ATT (2 PER ASSY)
38	1	33HT6801-6-8	9/16-18 TO 3/4-16 O-RING 90^ STR THREADED ELBOW CONN

FOLD-UP EXTENSION TO LAY FLAT FOR CONVEYOR, 25" LONG

[VM-00050](#)

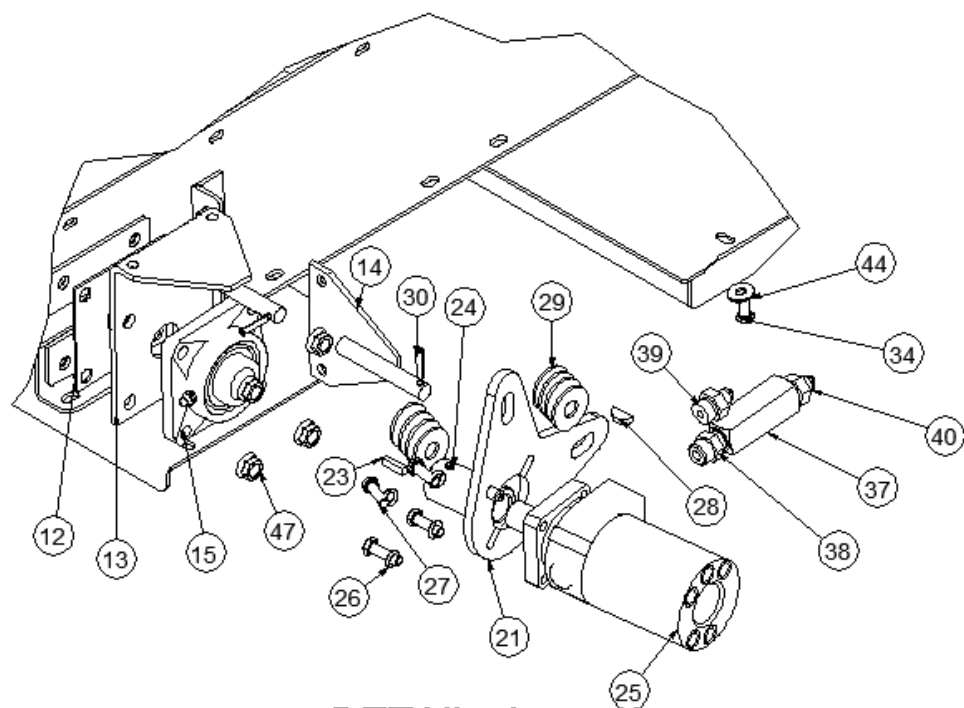
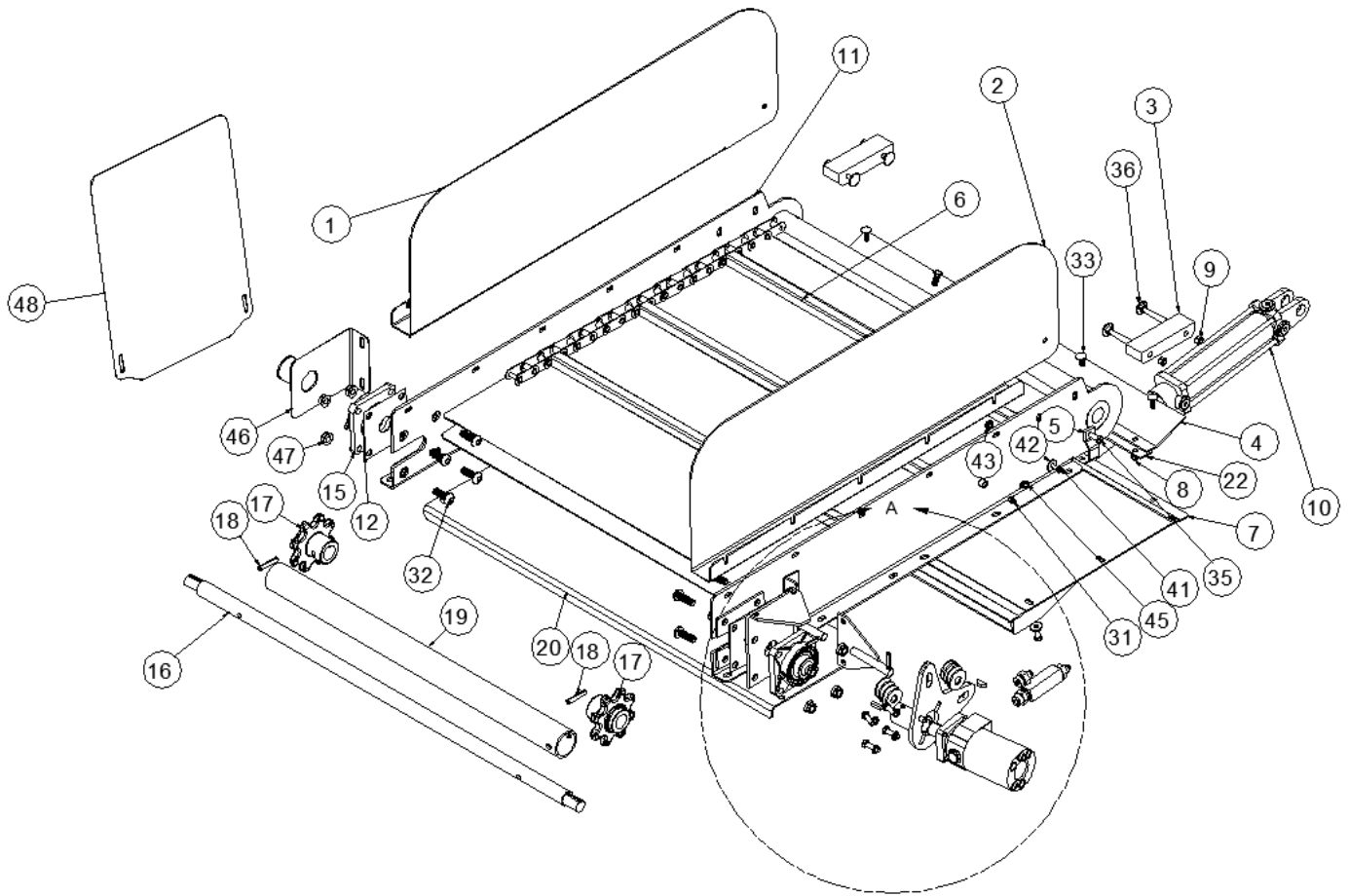


FOLD-UP EXTENSION TO LAY FLAT FOR CONVEYOR, 25" LONG

ITEM	QTY	PART NUMBER	DESCRIPTION
1	1	0-700474	CONVEYOR ASSY, 25 IN LONG FOLD UP
	1	0-700705	CONVEYOR ASSY FOR 81X CHAIN, 25 IN LONG FOLD UP
2	1	0-700598	SWING SHIELD HINGE SPACER, 1/4 * 1 1/4 * 3/4
3	1	0-700470	FOLD UP EXTENSION BOTTOM ASSY FOR CONVEYOR TO LAY FLAT
4	1	0-700736	FOLD UP CONVEYOR SEAL 1/8 UHMW * 6 * 35 1/2
5	1	0-700548	HYD MOTOR MOUNT, BOLT-ON
6	1	0-700404	DRIVE SHAFT SLOT COVER , 12 GA * 4 5/8 * 4 5/8
7	1	0-700403	HYD MOTOR MOUNT
8	1	0-700397	FRONT DISCHARGE CONVEYOR CHAIN, CA557
	20	0-700701	CONVEYOR CHAIN FLIGHT, 1 1/4 * 1 1/4 * 1/4 * 28 1/4
	2	23X81-090A	81X CONVEYOR CHAIN, 90 PITCH INC CL, 22 ATT (2 PER ASSY)
9	2	0-700417	CHAIN BLOCK 1 1/4 UHMW * 1 3/4 * 6
10	18	72FH0-0060	3/8 FLAT WASHER, ZP
11	4	70HC5-0620	3/8-16 * 2 1/2 HHCS, GRD 5, ZP
12	5	71UC2-0060	3/8-16 TOP LOCKNUT, ZP
13	5	70CC5-0508	5/16-18 * 1 CARRIAGE BOLT, GRD 5, ZP
14	5	71UC2-0050	5/16-18 TOP LOCKNUT, ZP
15	2	17400-2210	BRG 4-BOLT CAST, 1 1/4 B, III LIP SEAL, 3 5/8 HOLE CENTER
16	8	70BH5-0812	1/2-13 * 1 1/2 BUTTON HD SOCKET CAP SCREW, ZP, GRD 5
17	8	71WC2-0080	1/2-13 FLANGE LOCKNUT, ZP
18	1	0-700557	SHAFT, FOLD UP EXT DRIVE, 1 1/4 CRR * 43 5/8-CA557 CHAIN
	1	0-700702	SHAFT, FOLD UP EXT DRIVE, 1 1/4 CRR * 43 3/4, 81X CHAIN
19	1	0-130212	KEY, 1/4 CD * 1 1/4
20	1	26000-1000	SHAFT COUPLER, 1 5/8 OD * 1 ID * 3 OAL, 1/4 KW PN #511450
21	1	33BA0-0008	WOODRUFF KEY, AB, AC, AE MOTOR
22	1	33BAM-0000	HYD MOTOR, 18.0 CU IN
	1	33BAG-0000	HYD MOTOR, 11.9 CU IN
23	1	0-700453	CONVEYOR MOTOR MOUNT 3/8 * 8 * 8
24	2	16C10-0810	SPKT CAST, 8T, 1 1/4 B, 3/8 PH
	2	16C30-0610	SPKT 81XB6, 6T, 1 1/4 B, 3/8 PH
25	2	73S00-0616	3/8 * 2 SPIROL PIN, HBK
	2	73S00-0622	3/8 * 2 3/4 SPIROL PIN, HBK
26	2	74040-0000	1/4-28 STRAIGHT GREASE ZERK
27	1	0-700413	SHAFT TUBE COVER 2 SCH 40 PVC PIPE * 32 3/8
28	1	0-700569	FOLD UP CONVEYOR SHAFT SHIELD
29	4	72LH0-0060	3/8 SPLIT LOCK WASHER, ZP
30	4	70HC5-0610	3/8-16 * 1 1/4 HHCS, GRD 5, ZP
31	8	72M10-0014	MACHINE BUSHING, 5/8 ID * 1 1/8 OD * 14 GA, ZP
32	2	73E00-0410	1/4 * 1 1/4 SPRING PIN, ZP
33	1	33HT6400-6-10	9/16-18 37^ JIC TO 7/8-14 O-RING
34	1	33HT6403-10-8	7/8-14 MALE O-RING TO 3/4-16 MALE O-RING NIPPLE
35	1	33L00-1015	CHECK VALVE, 3/4-O/RING FEMALE/FEMALE
36	1	33HT6400-6-8	9/16-18 ORFS TO 3/4-16 O-RING 37^ JIC
37	1	33E00-0206	HYD CYLINDER, 2 * 6 , SAE #8 O/R PORTS
38	10	70HC5-0608	3/8-16 * 1 HHCS, GRD 5, ZP
39	8	71WC2-0060	3/8-16 FLANGE LOCKNUT, ZP
40	1	0-700495-R	FOLD UP EXTENSION FRONT SHIELD RH, 12 GA * 16 * 26 3/8
41	1	0-700495-L	FOLD UP EXTENSION FRONT SHIELD LH, 12 GA * 16 * 26 3/8
42	1	0-700432	CONVEYOR PIVOT SHIELD , 12 GA * 16 * 21
43	1	0-700496	CLAMP FOR HYDRAULIC HOSES 7 GA * 1 * 3 1/2
44	1	70HC5-0508	5/16-18 * 1 HHCS, GRD 5, ZP
45	5	70HC5-0506	5/16-18 * 3/4 HHCS, GRD 5, ZP
46	6	72FH0-0050	5/16 FLAT WASHER, ZP
47	6	71WC2-0050	5/16-18 FLANGE LOCKNUT, ZP

FOLD UP EXTENSION TO LAY FLAT FOR CONVEYOR, 40" LONG

[VM-000060](#)



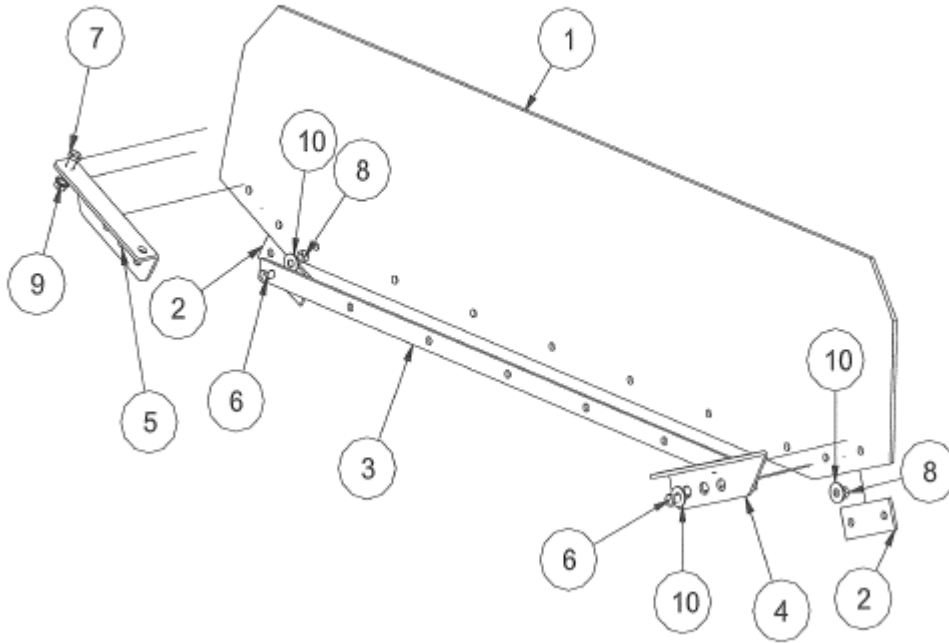
DETAIL A

FOLD UP EXTENSION TO LAY FLAT FOR CONVEYOR, 40" LONG

ITEM	QTY	PART NUMBER	DESCRIPTION
1	1	0-700409-R	FOLD UP EXT. FRONT SHIELD RH, 12 GA * 16 * 41
2	1	0-700409-L	FOLD UP EXT. FRONT SHIELD LH, 12 GA * 16 * 4
3	2	0-700417	CHAIN BLOCK 1 1/4 UHMW * 1 3/4 * 6
4	1	0-700736	FOLD UP CONVEYOR SEAL 1/8 UHMW * 6 * 35 1/2
5	1	0-700496	CLAMP FOR HYDRAULIC HOSES 7 GA * 1 * 3 1/2
6	1	0-700397	FRONT DISCHARGE CONVEYOR CHAIN, CA557
	22	0-700701	CONVEYOR CHAIN FLIGHT, 1 1/4 * 1 1/4 * 1/4 * 28 1/4
7	1	0-700550	FOLD UP EXT BOTTOM ASSY FOR CONVEYOR TO LAY FLAT
8	10	71UC2-0050	5/16-18 TOP LOCKNUT, ZP
9	5	71UC2-0060	3/8-16 TOP LOCKNUT, ZP
10	1	33E00-0208	HYD CYLINDER, 2 * 8, SAE #8 O/R PORTS
11	1	0-700473	CONVEYOR ASSY, 40 IN LONG FOLD UP
	1	0-700698	CONVEYOR ASSY, 40 IN LONG FOLD UP, FOR 81X CHAIN
12	1	0-700404	DRIVE SHAFT SLOT COVER , 12 GA * 4 5/8 * 4 5/8
13	1	0-700403	HYD MOTOR MOUNT
14	1	0-700548	HYD MOTOR MOUNT, BOLT-ON
15	2	17400-2210	BRG 4-BOLT CAST, 1 1/4 B, III LIP SEAL, 3 5/8 HOLE CENTER
16	1	0-700557	SHAFT, FOLD UP EXT DRIVE, 1 1/4 CRR * 43 5/8-CA557 CHAIN
	1	0-700702	SHAFT, FOLD UP EXT DRIVE, 1 1/4 CRR * 43 3/4, 81X CHAIN
17	2	16C10-0810	SPKT CAST, 8T, 1 1/4 B, 3/8 PH
	2	16C30-0610	SPKT 81XB6, 6T, 1 1/4 B, 3/8 PH
18	2	73S00-0616	3/8 * 2 SPIROL PIN, HBK
	2	73S00-0622	3/8 * 2 3/4 SPIROL PIN, HBK
19	1	0-700413	SHAFT TUBE COVER 2 SCH 40 PVC PIPE * 32 3/8
20	1	0-700469	4 FT OUTER CONVEYOR BOTTOM 10 GA * 12 * 38 7/8
	1	0-700680	4 FT OUTER CONVEYOR BOTTOM 10 GA * 17 3/4 * 38 7/8
21	1	0-700453	CONVEYOR MOTOR MOUNT 3/8 * 8 * 8
22	1	0-700598	SWING SHIELD HINGE SPACER, 1/4 * 1 1/4 * 34
23	1	0-130212	KEY, 1/4 CD * 1 1/4
24	1	26000-1000	SHAFT COUPLER, 1 5/8 OD * 1 ID * 3 OAL, 1/4 KW PN #511450
25	1	33BAG-0000	HYD MOTOR, 11.9 CU IN
	1	33BAM-0000	HYD MOTOR, 18.0 CU IN
26	4	72LH0-0060	3/8 SPLIT LOCK WASHER, ZP
27	4	70HC5-0610	3/8-16 * 1 1/4 HHCS, GRD 5, ZP
28	1	33BA0-0008	WOODRUFF KEY, AB, AC, AE MOTOR
29	8	72M10-0014	MACHINE BUSHING, 5/8 ID * 1 1/8 OD * 14 GA, ZP
30	2	73E00-0410	1/4 * 1 1/4 SPRING PIN, ZP
31	2	74040-0000	1/4-28 STRAIGHT GREASE ZERK
32	8	70BH5-0812	1/2-13 * 1 1/2 BUTTON HD SOCKET CAP SCREW, ZP, GRD 5
33	5	70CC5-0508	5/16-18 * 1 CARRIAGE BOLT, GRD 5, ZP
34	10	70HC5-0608	3/8-16 * 1 HHCS, GRD 5, ZP
35	1	70HC5-0608	3/8-16 * 1 HHCS, GRD 5, ZP
36	4	70HC5-0620	3/8-16 * 2 1/2 HHCS, GRD 5, ZP
37	1	33L00-1015	CHECK VALVE, 3/4-O/RING FEMALE/FEMALE
38	1	33HT6403-10-8	7/8-14 MALE O-RING TO 3/4-16 MALE O-RING NIPPLE
39	1	33HT6400-6-10	9/16-18 37^ JIC TO 7/8-14 O-RING
40	6	33HT6400-6-8	9/16-18 ORFS TO 3/4-16 O-RING 37^ JIC
41	10	70HC5-0506	5/16-18 * 3/4 HHCS, GRD 5, ZP
42	1	72FH0-0050	5/16 FLAT WASHER, ZP
43	10	71WC2-0050	5/16-18 FLANGE LOCKNUT, ZP
44	18	72FH0-0060	3/8 FLAT WASHER, ZP
45	10	71WC2-0060	3/8-16 FLANGE LOCKNUT, ZP
46	1	0-700569	FOLD UP CONVEYOR SHAFT SHIELD
47	8	71WC2-0080	1/2-13 FLANGE LOCKNUT, ZP
48	1	0-700432	CONVEYOR PIVOT SHIELD , 12 GA * 16 * 21

FRONT DISCHARGE CONVEYOR RUBBER SPOUT

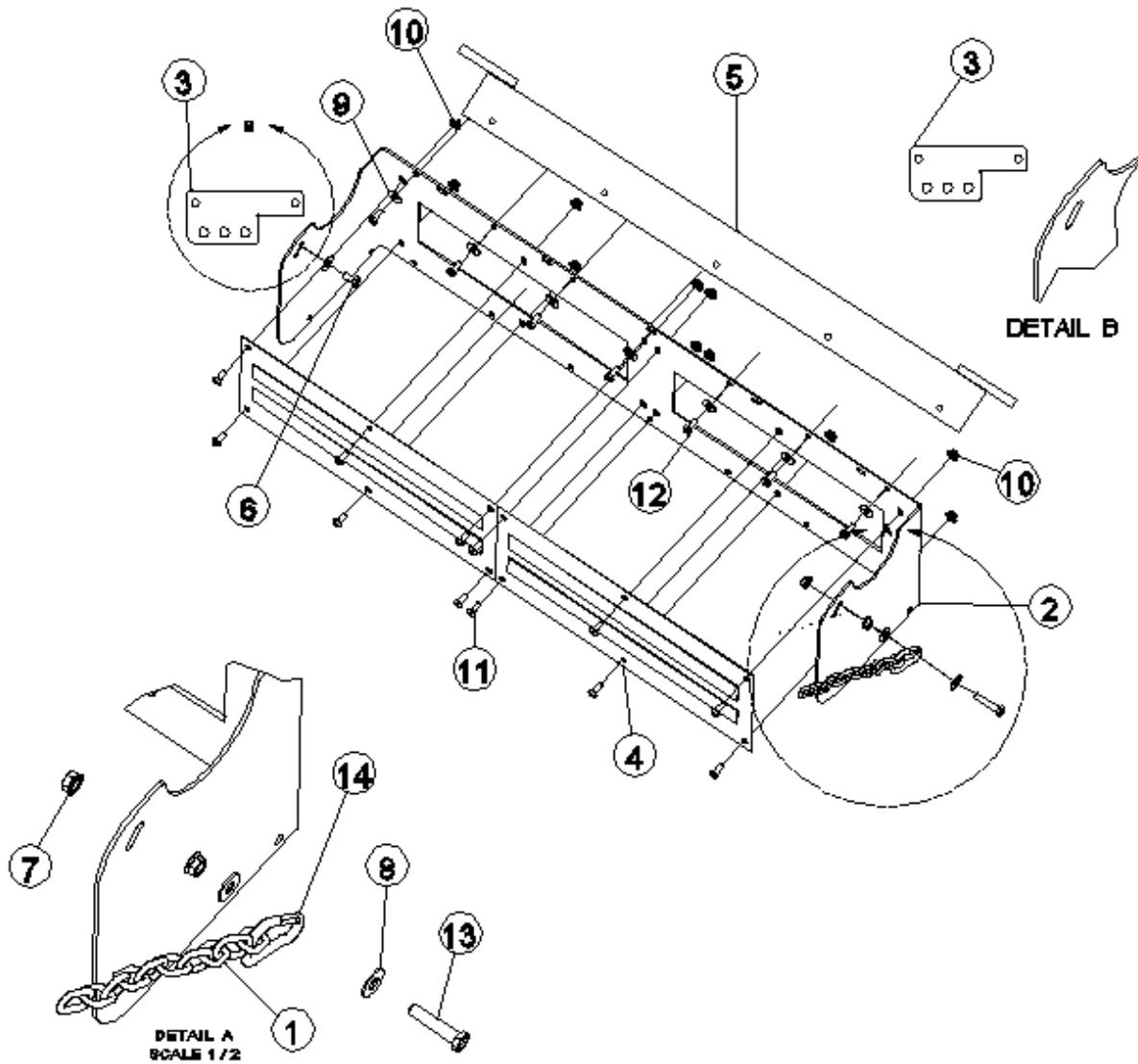
VM-000070



ITEM	QTY	PART NUMBER	DESCRIPTION
1	1	42000-1247	VM CONVEYOR RUBBER SPOUT 1/4 * 11 1/2 * 47
2	2	0-700436	FRONT PANEL BRACE 7 GA * 1 1/2 * 3 1/2
3	1	0-700681	CONVEYOR STRAP FOR RUBBER SPOUT 7 GA * 1 * 34 3/4
4	1	0-700468-R	MAGNET HINGE BRACKET 7 GA * 3 1/4 * 7
5	1	0-700468-L	MAGNET HINGE BRACKET 7 GA * 3 1/4 * 7
6	11	70HC5-0508	5/16-18 * 1 HHCS, GRD 5, ZP
7	4	70HC5-0606	3/8-16 * 3/4 HHCS, GRD 5, ZP
8	11	71UC2-0050	5/16-18 TOP LOCKNUT, ZP
9	4	71WC2-0060	3/8-16 FLANGE LOCKNUT, ZP
10	15	72FH0-0050	5/16 FLAT WASHER, ZP

MAGNET SPOUT ASSEMBLY

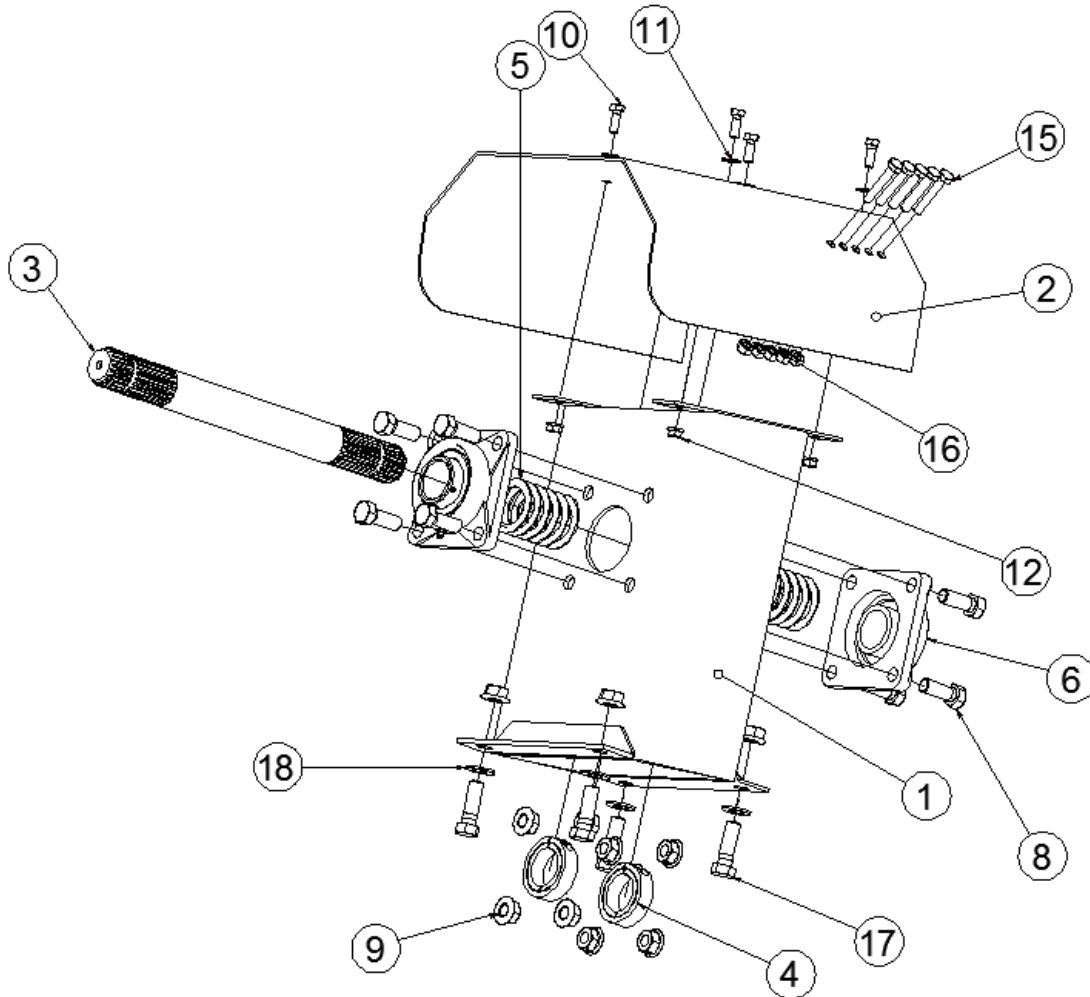
VM-000080



ITEM	QTY	PART NUMBER	DESCRIPTION
1	2	34P04-0000	3/16 PROOF COIL CHAIN GRD 28
2	1	0-700424	DUAL DISCHARGE MAGNET MOUNT 10 GA * 11 * 61
3	1	0-700468-L	MAGNET HINGE BRACKET 7 GA * 3 1/4 * 7
	1	0-700468-R	MAGNET HINGE BRACKET 7 GA * 3 1/4 * 7
4	2	45000-0820	MAGNET, 8 1/2 * 19 1/2, STAINLESS
5	1	0-700472	DISCHARGE ADJUSTABLE MAGNET MOUNT ASSY.TYPE HINGE
6	2	70HC5-0506	5/16-18 * 3/4 HHCS, GRD 5, ZP
7	3	71WC2-0060	3/8-16 FLANGE LOCKNUT, ZP
8	4	72FH0-0060	3/8 FLAT WASHER, ZP
9	7	72FH0-0050	5/16 FLAT WASHER
10	20	71WC2-0050	5/16 FLAT WASHER, ZP
11	12	70BH5-0506	5/16-18 * 3/4 BUTTON HD SOCKET CAP SCREW, ZP, GRD 5
12	7	70HC5-0506	5/16-18 * 3/4 HHCS, GRD 5, ZP
13	2	70HC5-0614	3/8-16 * 1 3/4 HHCS, GRD 5, ZP
14	2	34SS4-0000	SPRING SNAP LOCK, ZP, 5/16 * 3 1/8

TRANSFER BOX

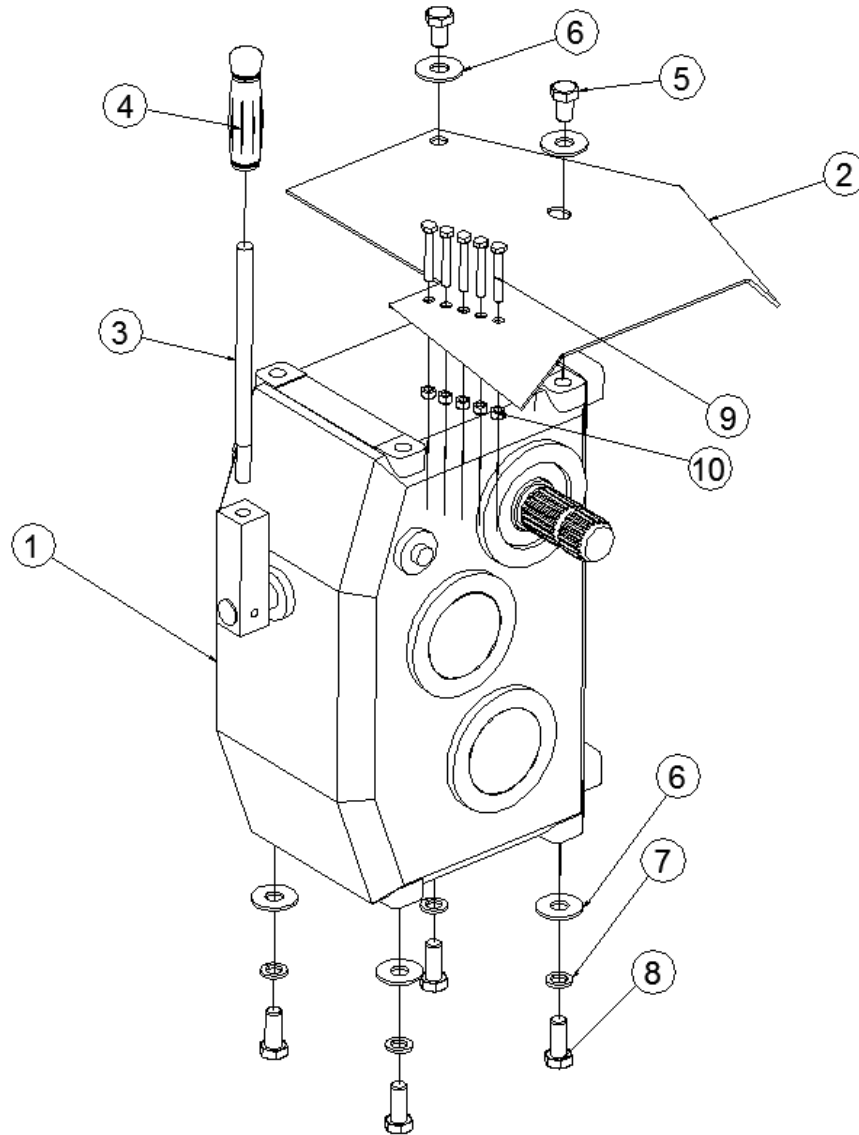
VM-00090



ITEM	QTY	PART NUMBER	DESCRIPTION
1	1	0-700392	SINGLE SPEED ANGLED TRANSFER BOX
2	1	0-700614	TRANSFER BOX PTO COVER 10 GA * 18 * 26
3	1	26SCH-0218	SPLINED CARRIER SHAFT, 1 3/4-20 SPLINED BOTH ENDS * 18
4	2	28010-0014	LOCK COLLAR, 1 3/4 BORE, SINGLE SPLIT
5	12	72M28-0014	MACHINE BUSHING, 1 3/4 ID * 2 1/2 OD * 14 GA, ZP
6	2	17400-2214	BRG 4-BOLT CAST, 1 3/4 B, III LIP SEAL, 4 1/8 HOLE CENTER
8	12	70HC5-1014	5/8-11 * 1 3/4 HHCS, GRD 5, ZP
9	12	71WC2-0100	5/8-11 FLANGE LOCKNUT, ZP
10	4	70HC5-0608	3/8-16 * 1 HHCS, GRD 5, ZP
11	4	72FH0-0060	3/8 FLAT WASHER, ZP
12	4	71WC2-0060	3/8-16 FLANGE LOCKNUT, ZP
15	5	70HM8-0817	M8-1.25 * 55 HHCS CLASS 8.8
	5	70HC2-0518	5/16 * 2 1/4 HHCS, GRD 2, BLACK
16	5	71UM8-0800	M8-1.25 TOP LOCK NUT GRD 8.8, ZP
	5	71UC2-0050	5/16-18 TOP LOCKNUT, ZP
18	4	72FH0-0100	5/8 FLAT WASHER, ZP

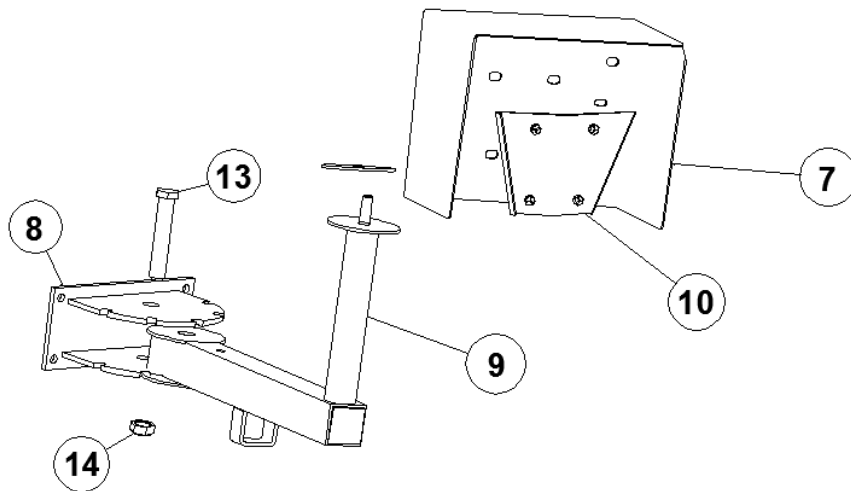
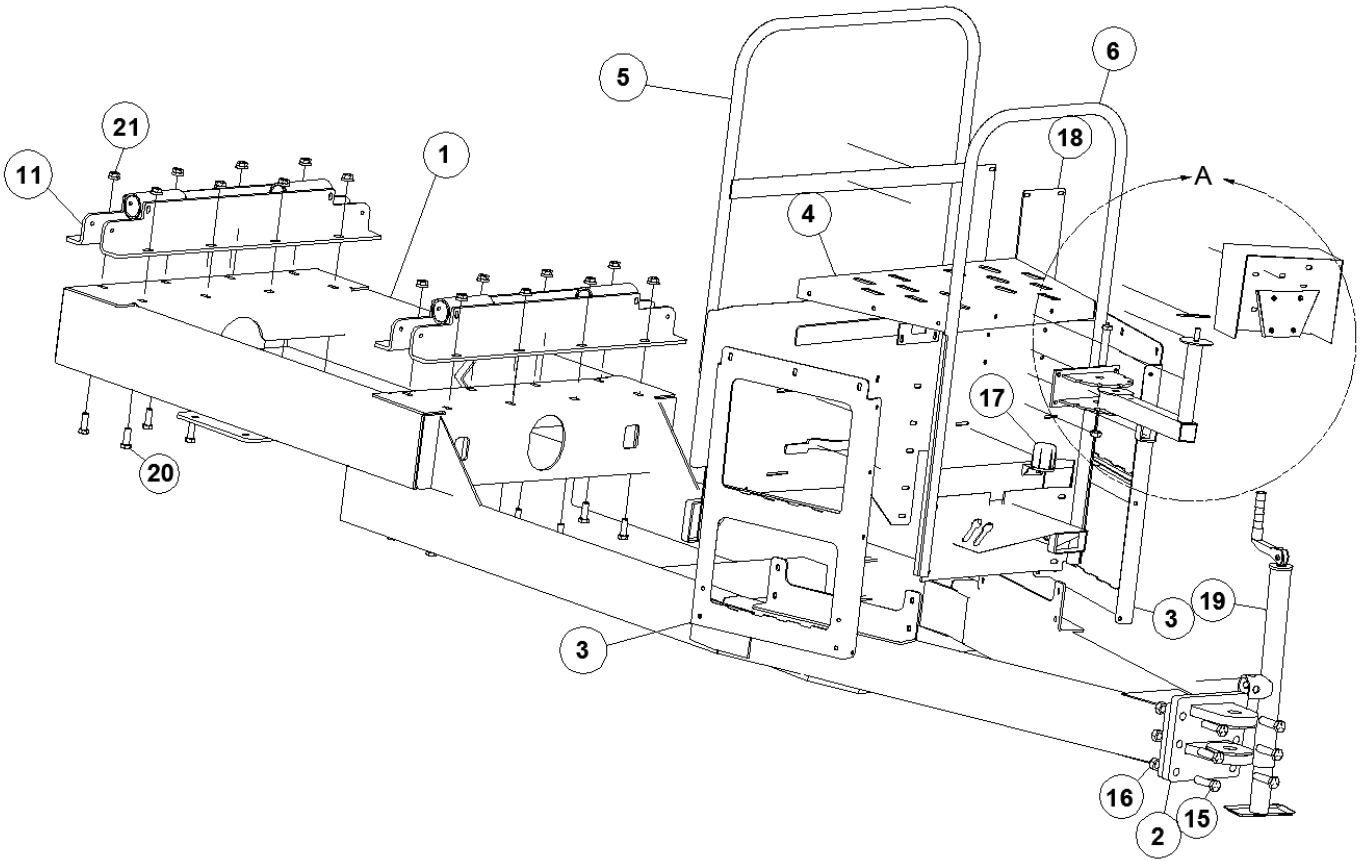
2-SPEED GEARBOX

VM-000100



ITEM	QTY	PART NUMBER	DESCRIPTION
1	1	26S24-5367	GEARBOX 2-SPEED, 1:5 TO 1:1 WITH 1 3/4-20 INPUT AND OUTPUT
2	1	0-700001	FRONT PTO SHIELD 10 GA * 14 * 16
3	1	0-700280	SHIFT LEVER TWO SPEED GEARBOX 5/8 CCR * 10
4	1	41P00-0540	PLASTIC GRIP, 5/8 ID * 5
5	2	70HM8-1625	M16-2.0 * 25 HHCS, CLASS 8.8
6	6	72FH0-0100	5/8 FLAT WASHER, ZP
7	4	72LH0-0100	5/8 SPLIT LOCK WASHER, ZP
8	4	70HM8-1645	M16-2.0 * 45 HHCS, CLASS 8.8, ZP
9	5	70HM8-0817	M8-1.25 * 55 HHCS CLASS 8.8
	5	70HC2-0518	5/16 * 2 1/4 HHCS, GRD 2, BLACK
10	5	71UM8-0800	M8-1.25 TOP LOCK NUT GRD 8.8, ZP
	5	71UC2-0050	5/16-18 TOP LOCKNUT, ZP

VM2820 FRAME
VM-000110



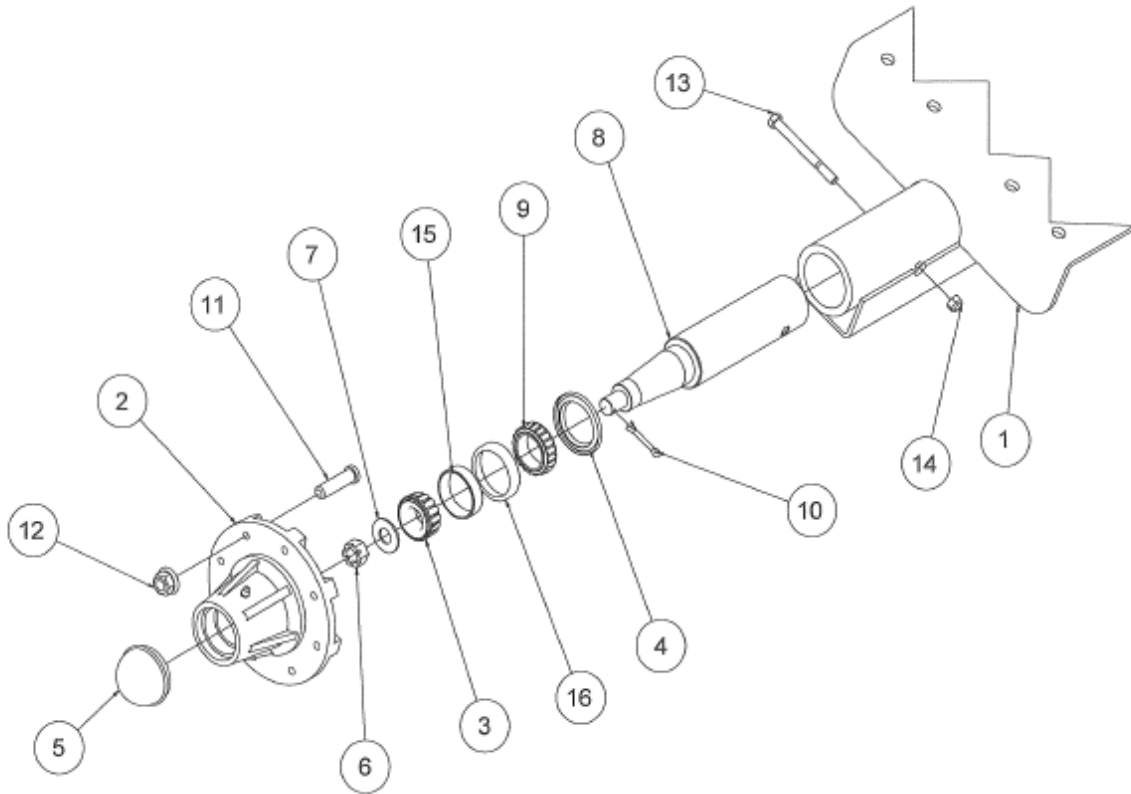
DETAIL A

VM2820 FRAME

ITEM	QTY	PART NUMBER	DESCRIPTION
1	1	0-700914	FRAME ASSY, FRONT DISCHARGE V2820
		0-700910	FRAME ASSY, SIDE DISCHARGE V2820
2	1	0-700239	HITCH BRACKET ASSEMBLY, BOLT-ON
3	2	0-700750	PLATFORM LADDER ASSY FOR 2820
4	1	0-700267	PLATFORM FOR SMALL VM
5	1	0-700414	REAR HAND RAIL ASSY. FOR VM PLATFORM
6	1	0-700297	FRONT HANDRAIL ASSY FOR 550 PLATFORM
7	1	0-320350	SWIVEL MOUNT INDICATOR BKT
8	1	0-600605	SWIVEL MOUNT BRACKET 1/4 * 4 * 9
9	1	0-700272	INDICATOR ARM SWIVEL SMALL VM
10	1	0-320149	SCALE HEAD MOUNTING BRACKET
11	2	0-700513	WEIGH BAR BRACKET ASSY, V4020 & V5020
12	1	0-600450	FRICTION DISC SWIVEL MOUNT, 1/8 RUBBER * 3 1/2
13	1	70HC2-1232	3/4-10 * 4 HHCS, GRD 2, ZP
14	1	71TC2-0120	3/4-10 TWA LOCKNUT, ZP
15	6	70HF8-1222	3/4-16 * 2 3/4 HHCS, GRD 5, ZP
16	6	71UF5-0120	3/4-16 TOP LOCKNUT, ZP
17	1	10050-2605	PLUG STORAGE HOLDER FOR LIGHT HARNESS
18	1	0-700408	BATTERY BOX , 12 GA * 13 * 35
19	1	29B00-5000	JACK ASSY, 5000 LB TOP WIND, 15" LIFT
20	16	70HC5-1014	5/8-11 * 1 3/4 HHCS, GRD 5, ZP
21	16	71WC2-0100	5/8-11 FLANGE LOCKNUT, ZP
22	16	72FH0-0100	5/8 FLAT WASHER, ZP

SPINDLE
VM-000120

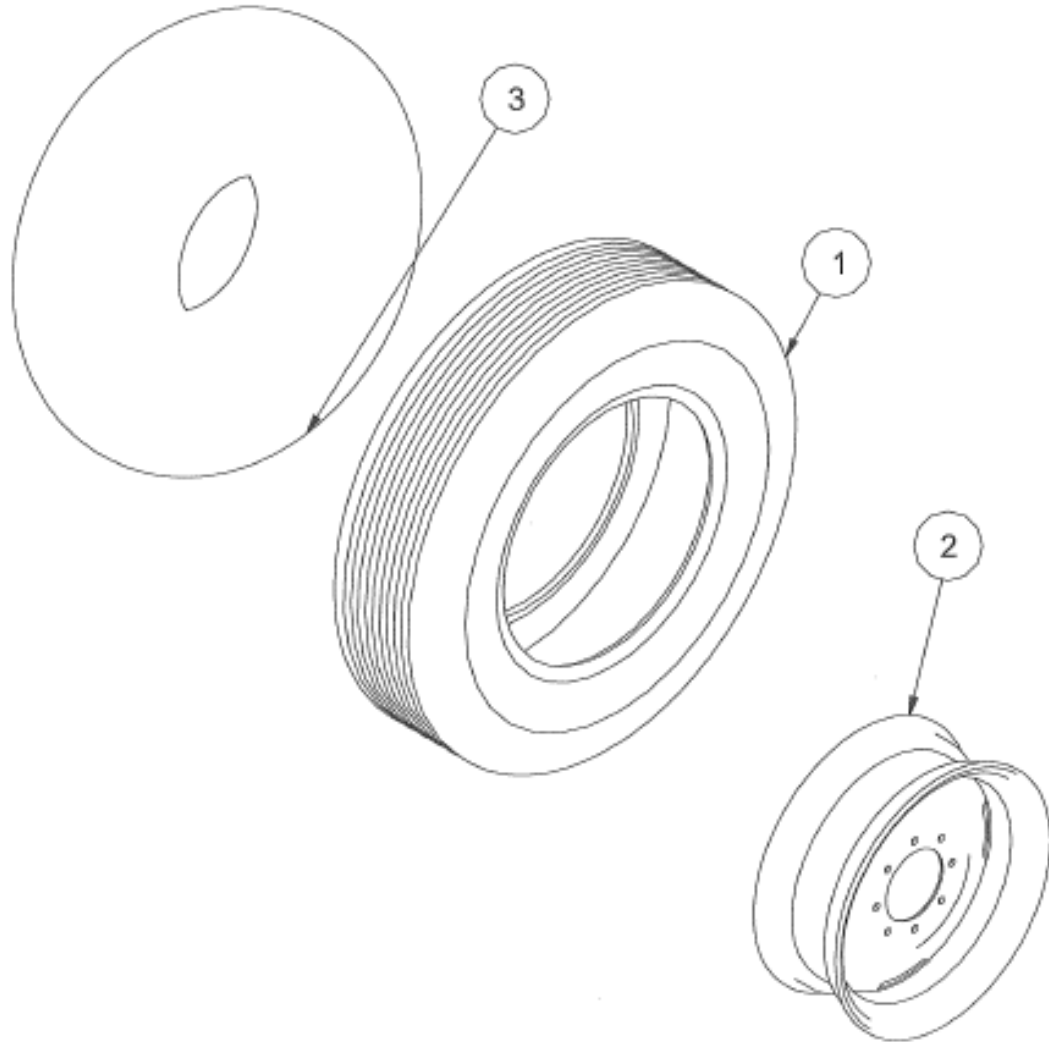
8 BOLT SPINDLE 1240



ITEM	QTY	PART NUMBER	DESCRIPTION
1	1	0-700911	AXLE ASSY, FOR V2820
2	2	1924A-0800	WHEEL HUB 8-BOLT, 8000 LB, CONES, 3" SEALS & STUDS
3	2	18LM501349	BRG CONE, OUTER
4	2	180N45013S	GREASE SEAL, 4 OD
5	2	1924P-0003	CAP, 8-BOLT HD (8000 LB)
6	2	2008P-0001	SPINDLE NUT, 1-14 SLOTTED NUT
7	2	2008P-0002	SPINDLE WASHER, 1 1/16 ID * 2 1/8 OD * 1/4 THICK
8	2	2024A-0173	SPINDLE ASSY 3 * 16, 8000 LB, W/NUT WASHER & COTTER
9	2	180387AS-N	BRG CONE, INNER
10	2	2008P-0003	SPINDLE COTTER, 7/32 * 1 1/2
11	16	1924P-0002	WHEEL STUD 5/8-18 NF (8,000 LB)
12	16	1924P-0001	WHEEL NUT 5/8-18 NF SMALL ACORN
13	2	70HC8-0840	1/2-13 * 5 HHCS, GRD 8, ZP
14	2	71UC2-0080	1/2-13 TOP LOCKNUT, ZP
15	2	18LM501310	BRG CUP, OUTER
16	2	180000382A	BRG CUP, INNER

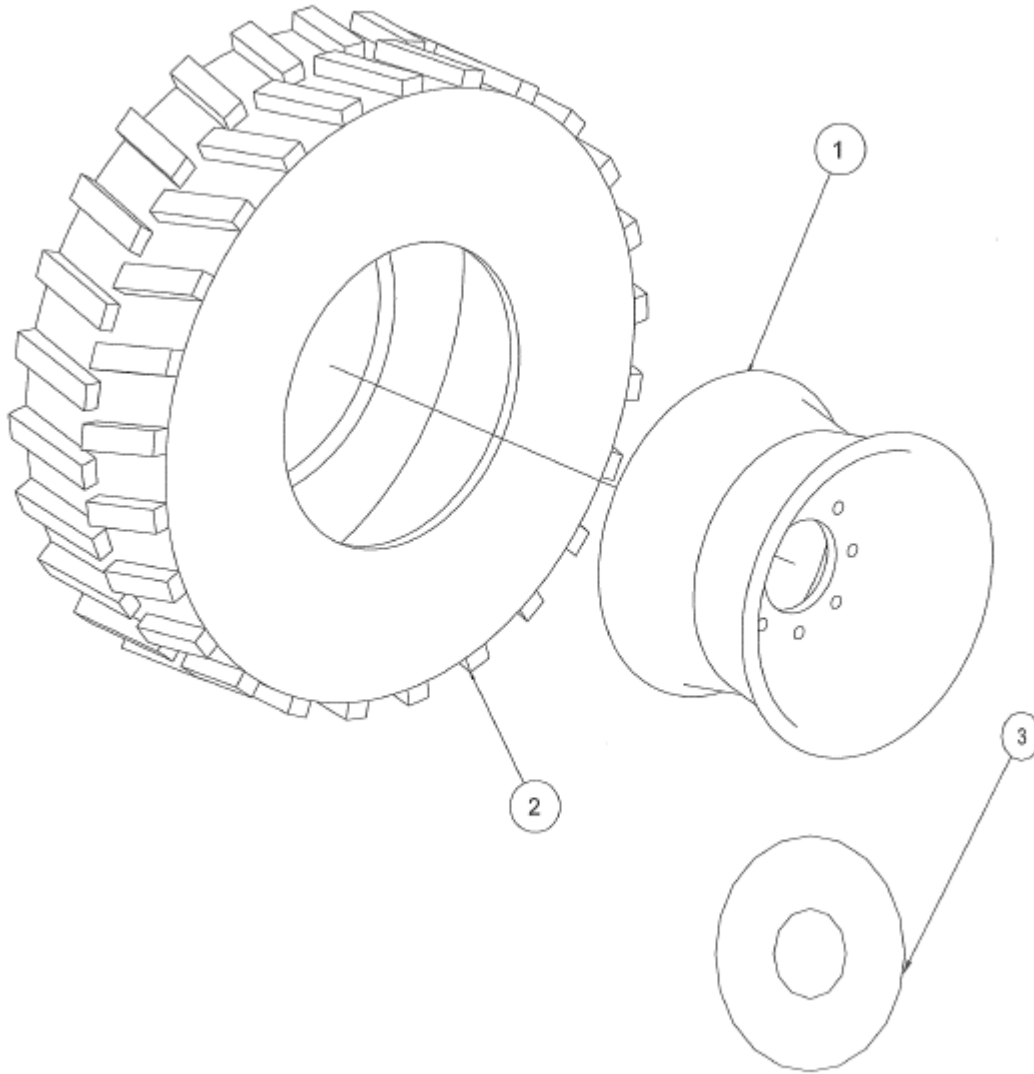
TIRES AND WHEELS

VM-000130



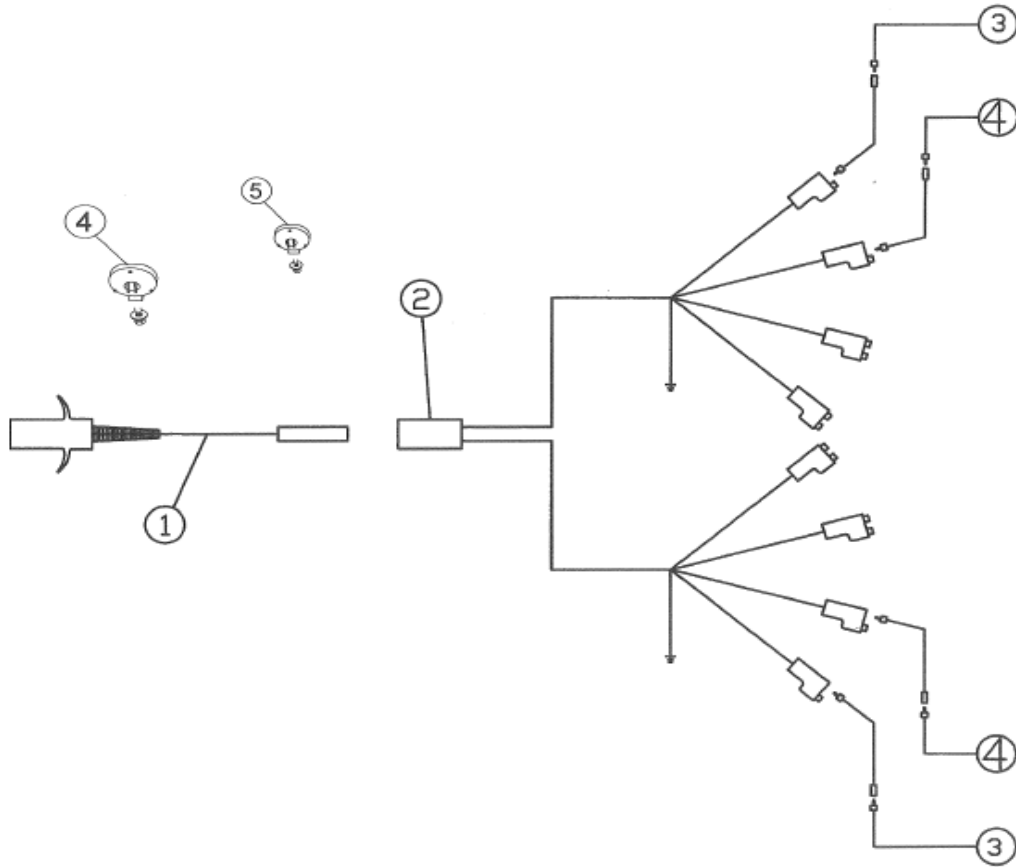
ITEM	QTY	PART NUMBER	DESCRIPTION
1	2	2100T-3611	36 * 11.00 TIRE
2	2	2108P-3611	WHEEL RIM, 2 PIECE, 16 * 9, 8-BOLT
3	2	2100T-3610	36 * 11.00 TUBE

TIRES AND WHEELS
(OPTION)
[VM-000140](#)



ITEM	QTY	PART NUMBER	DESCRIPTION
1	2	2108P-1759	WHEEL, 8-BOLT, 17.5 * 12, 25/32 HOLES FOR ALLIANCE TIRE
	2	2108P-1911	WHEEL, 8-BOLT, 19 x 11 2-PIECE WHEEL, 11/16 HOLES
2	2	2100T-3515	400/55/17.5 ALLIANCE TIRE 16 PLY
	2	2100T-3812	H-38x12.0-19 LUG AIRCRAFT TIRE
3	2	2100T-3811	TUBE FOR 38 x 12.0 TIRE
		2100T-3513	14R17.5 TUBE (FOR 400/55/17.5 ALLIANCE TIRE)

VM5020 – 4020 – 2820 WIRE DIAGRAM
VM-000150



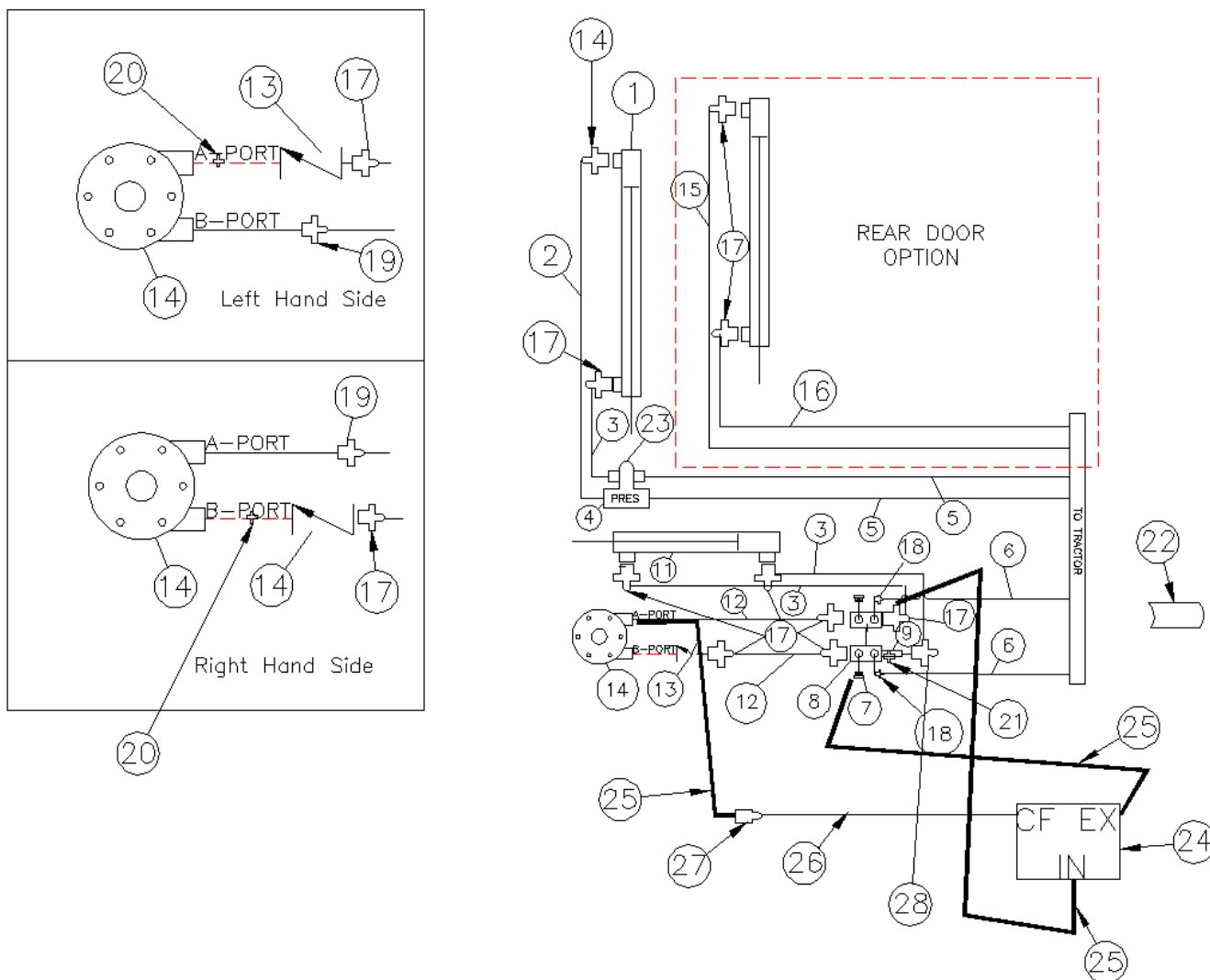
ITEM	QTY	PART NUMBER	DESCRIPTION
1	1	10050-2425	HARNESS, 30 FT STRAIGHT SECTION, SHIELD CABLE
2	1	10050-2510	HARNESS, WISHBONE 10 FT WITH CONNECTORS
3	1	10050-2605	PLUG STORAGE HOLDER FOR LIGHT HARNESS
4		10050-2600	AMBER LAMP, ROUND
5		10050-2601	RED LAMP, ROUND

WIRING DIAGRAM

TERMINAL NUMBER	WIRE COLOR	CIRCUIT SERVICE
#1	WHITE	GROUND
#3	YELLOW	LEFT FLASHING/TURN SIGNAL
#5	GREEN	RIGHT FLASHING/TURN SIGNAL
#6	BROWN	TAIL LIGHTS
TERMINALS NOT USED BUT AVAILABLE FOR FUNCTIONS BELOW		
#2	BLACK	WORKING LIGHTS
#4	RED	AUXILIARY
#7	BLUE	AUXILIARY

HYDRAULICS – DISCHARGE CONVEYOR

VM-000160

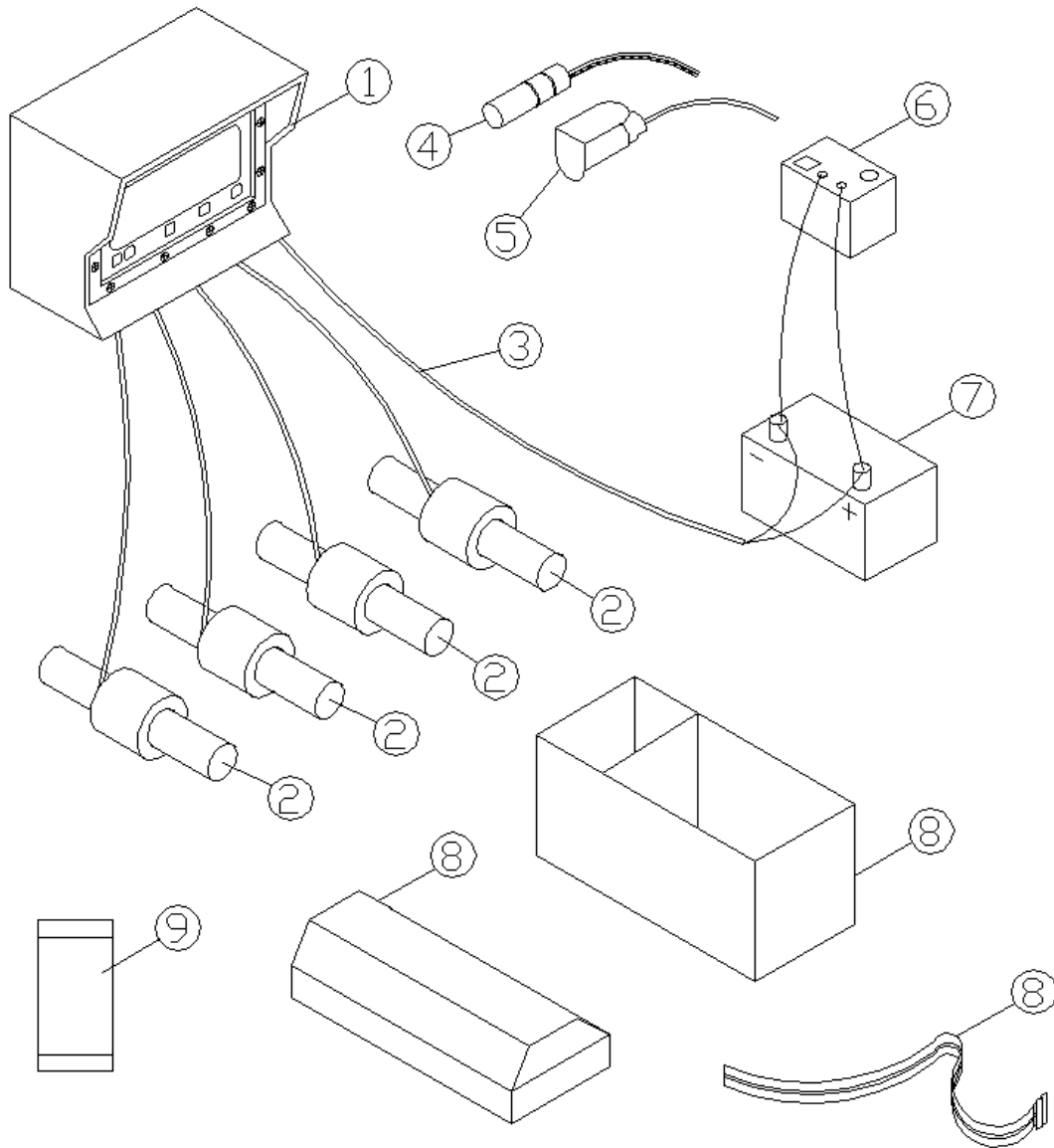


ITEM	QTY	PART NUMBER	DESCRIPTION
1	2	0-222000	SHORT BUNGUARD BRACE 7 GA. 1 1/2 * 18 1/2
	3	0-222000	SHORT BUNGUARD BRACE 7 GA. 1 1/2 * 18 1/2
2	2	0-223000	BUNGUARD BRACE ANGLE 7 GA. 2 1/8 * 14
	3	0-223000	BUNGUARD BRACE ANGLE 7 GA. 2 1/8 * 14
3	1	0-222015	BUNGUARD ASSY, LONG W/BOLT PLATE, 125BF
	1	0-222016	BUNGUARD ASSY, LONG, W/BOLT PLATE, 175BF, 220BF
4	2	0-250001	STAKE POCKET BRACKET FOR 30 DEGREE FLARE
5	2	0-250006	CORNER BRACE FOR SIDEBOARDS, 12 GA * 8 * 10 1/2
6	2	0-251000	STAKE ANGLE FOR SIDEBOARDS 7 GA * 2 5/8 * 19

VM2820 FLOW CONTROL

ITEM	QTY	PART NUMBER	DESCRIPTION
24	1	33L00-2000	FLOW CONTROL W/RELIEF VALVE, 16 GPM
25	3	33PH2-0481	3/8-3000 PSI * 48, 9/16 -18 STRAIGHT & 9/16 -18 90 DEG
26	1	33PH2-0740	3/8-3000 PSI * 78, 9/16-18 STRAIGHT & 9/16-18 90 DEG
27	1	2403-6	JIC-CONNECTOR

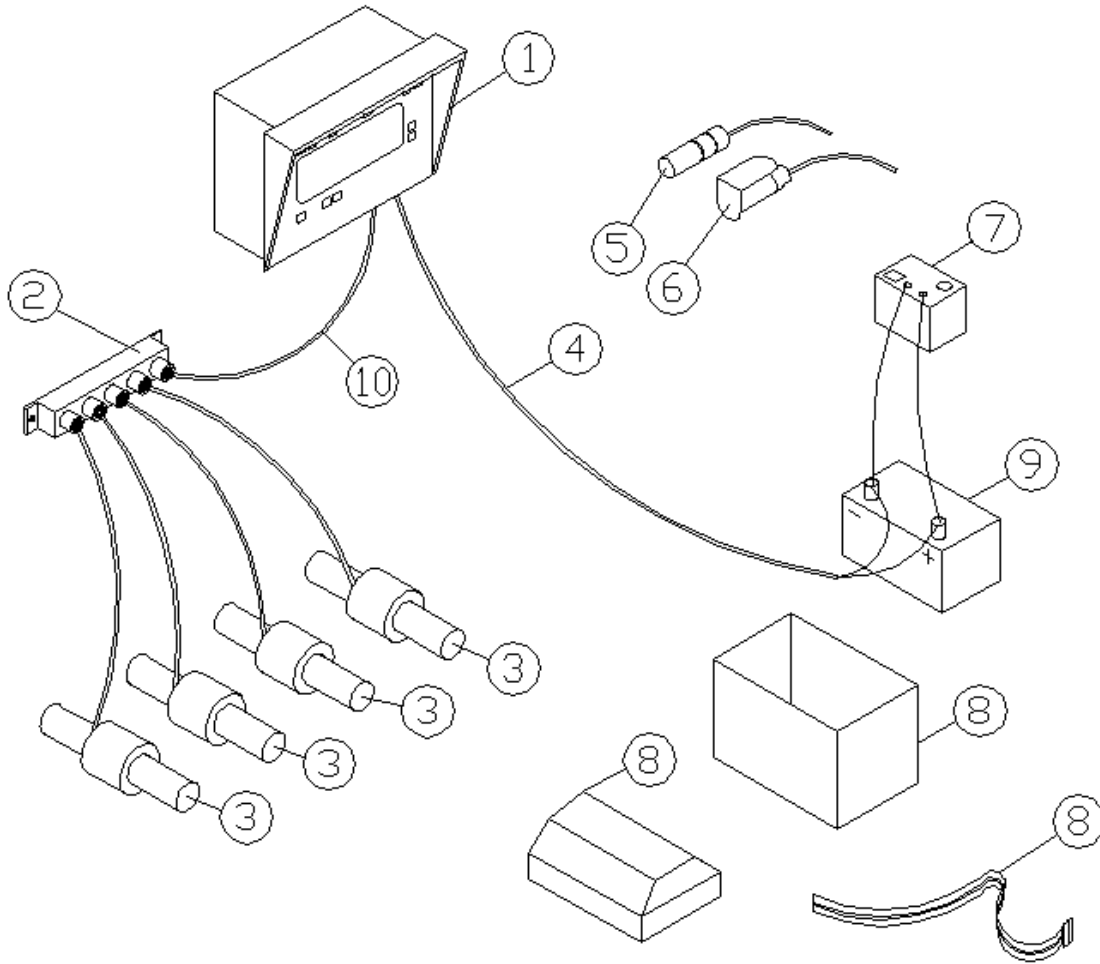
ELECTRONIC SCALE – WEIGH TRONIX
[VM-000170](#)



ITEM	QTY	PART NUMBER	DESCRIPTION
1	1	32W64-640X	W-T INDICATOR MODEL 640XL W/REMOTE PORT 5-PIN GA 2.500
	1	32WRD-40XL	RD40XL LARGE REMOTE DISPLAY 30' CABLE
2	4	32W1T-5430	TRUCK MOUNT W/B, 2 1/8 OD GA 2.125, 5 PIN 30' CORD
3	1	32WPC-2018	POWER CORD 12V, DIGITAL 2PIN, TO BATTERY
	1	32WPC-2018	POWER CORD 12V, DIGITAL 2PIN, TO BATTERY
4	1	32WPC-2030	POWER CORD 12V, 2 PIN, FOR WEIGH-TRONIX, TO TRACTOR
5	1	32WPC-0000	W-T QUICK DETACH PLUG-IN
6	1	32B00-1002	1 1/2 AMP BATTERY CHARGER
7	1	32B00-0990	MARINE BATTERY, 12 VOLT W/ACID & CHARGE (SMALLER UNIT)
8	1	32B00-1004	PLASTIC BATTERY BOX, 11 * 7 1/2 * 8 3/4
9	4	0-700596	WEIGHBAR SPACER TUBE 2 1/2 OD * 1 25/32 ID * 1 1/2

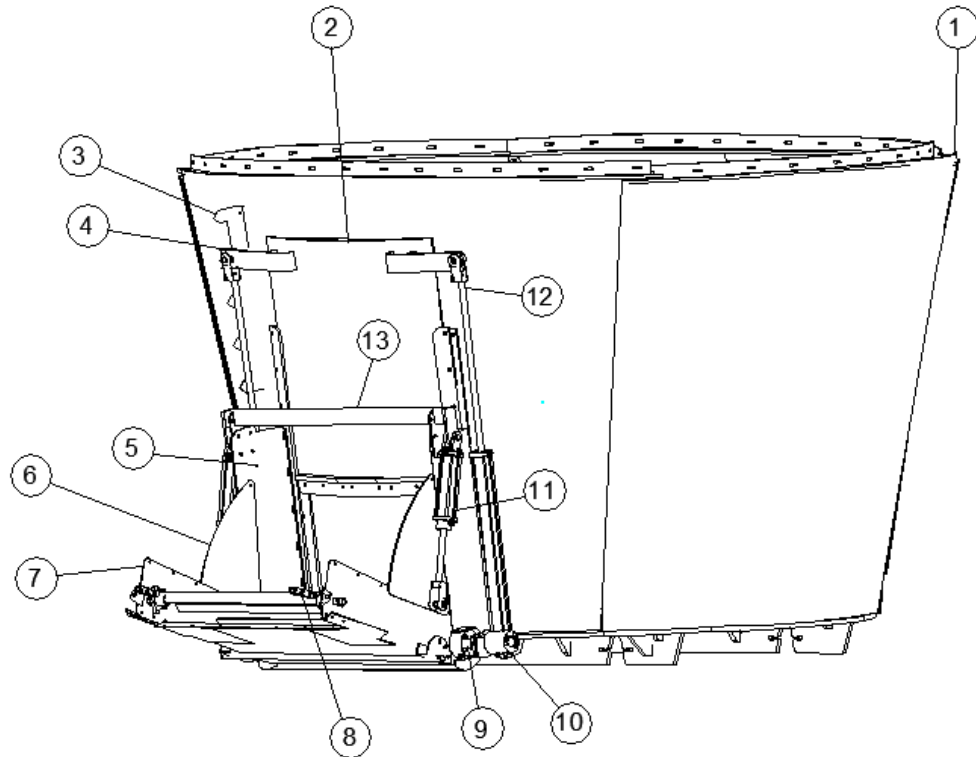
ELECTRONIC SCALE – DIGI-STAR

VM-000180



ITEM	QTY	PART NUMBER	DESCRIPTION
1	1	32J40-V240	DIGI-STAR EZ VIEW 2400 INDICATOR W/REMOTE PORT
2	1	32WJB-5000	WEIGH TRONIX J-BOX, 5-PIN TO 5 PIN
3	4	32W1T-5430	TRUCK MOUNT W/B, 2 1/8 OD GA 2.125, 5 PIN 30' CORD
4	1	32JPC-4011	POWER CORD, 4 PIN, F/POWER PAK
5	1	32JPC-4027	POWER CORD, 4 PIN, 27', F/POWER PAK
6	1	32WPC-0000	W-T QUICK DETACH PLUG-IN
7	1	32B00-1002	1 1/2 AMP BATTERY CHARGER
8	1	32B00-1004	PLASTIC BATTERY BOX, 11 * 7 1/2 * 8 3/4
9	1	32B00-0990	MARINE BATTERY, 12 VOLT W/ACID & CHARGE (SMALLER UNIT)
10	1	32WJB-5400	W-T TO DIGI-STAR, 15' J-BOX CORD 5 PIN TO 4 PIN
11	4	0-700596	WEIGHBAR SPACER TUBE 2 1/2 OD * 1 25/32 ID * 1 1/2

SIDE DISCHARGE 2820 MIXER TUB ASSEMBLY
(OPTION)
VM-000190



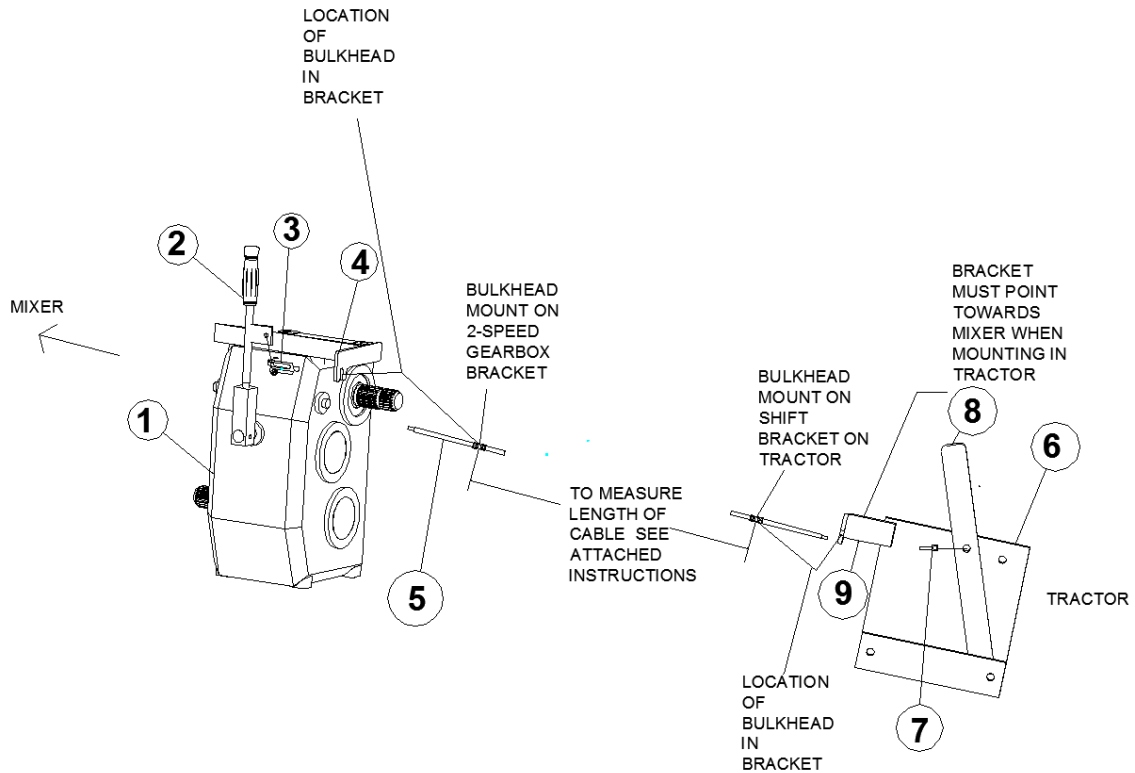
ITEM	QTY	PART NUMBER	DESCRIPTION
1	1	0-700909	TUB ASSEMBLY, SIDE DISCHARGE, V2820, COMER
2	1	0-700348	DISCHARGE DOOR, 3510, 1/2 * 36 * 36 1/2
3	1	0-700035	DOOR GAUGE VERTICAL 12 GA * 6 1/2 * 30
4	1	0-700085	VERTICAL MIXER DOOR GAUGE 14 GA * 5 * 6
5	1	0-700331	DISCHARGE CONVEYOR MOUNT FOR LONG CONVEYOR FOR VM
6	2	0-700326	CONVEYOR SIDE PANEL 10 GA * 13 7/8 * 22 7/8
7	1	0-700284	CONVEYOR ASSY, OAL 37 1/4
8	1	23H08-031A	D667H CONVEYOR CHAIN, 31 P, 8 ATT, PR INC 2 PINS
9	1	26000-1000	SHAFT COUPLER, 1 5/8 OD * 1 ID * 3 OAL, 1/4 KW PN #511450
10	1	33BAM-000	HYD MOTOR, 18.0 CU IN
11	2	33E00-0208	HYD CYLINDER, 2 * 8, SAE #8 O/R PORTS
12	2	33E00-0224	HYD CYLINDER, 2 * 24, SAE #8 O/R PORTS
13	1	0-700346	DISCHARGE LIFT TUBE

INSTRUCTIONS FOR MEASURING CABLE FOR 2-SPEED GEARBOX MECH. SHIFTER

1. The tractor universal shift handle bracket and the corresponding 2-speed gearbox bracket are designed **specifically for Teleflex Morse Controls Blak-Jaket Cables, 40 Series (1/4-1/4-28 thread), with 4" stroke travel.**
2. To order the correct length cable, the overall length is needed.
3. First, plan the route of the shift cable to the shift handle bracket location on the tractor. Avoid sharp bends in the shift cable.
4. Next, measure from the bulkhead mount on the 2-speed gearbox to the Bulkhead mount on the shift handle bracket on the tractor.
IMPORTANT: Add additional cable length for turning without stretching the cable tight, breaking the cable, crimping the cable or damaging the brackets.
5. Next, add 18" to the measurement arrived at in step 4. This is the "overall length" measurement needed to order the shift cable for that particular application. The ends required on the shift cable to complete are Teleflex Morse part no. A41134 Terminal (1/4-28 thd.) and Teleflex Morse part no. A45985 Clevis (1/4-28thd.). The terminal goes on the tractor end of the cable, attaching to the shift handle bracket on the tractor.
6. With this information, the Schuler Mfg. parts department can get a price quote for you and order the shift cable with your approval.
7. Shift cables are customer made-to-order and may not be returned.
8. Shift cables are not covered under the Schuler machine warranty, nor is damage to the brackets caused by the shift cable.

2-SPEED SHIFT CABLE OPTION

VM-000200



ITEM	QTY	PART NUMBER	DESCRIPTION
1	1	26S24-5367	GEARBOX 2-SPEED, 1:5 TO 1:1 WITH 1 3/4-20 INPUT AND OUTPUT
2	1	0-700752	TWO SPEED CABLE SHIFTING ROD ASSY
3	1	35045-0000	CLEVIS, 1/4-28 THREAD
4	1	700753	TWO SPEED CABLE SHIFTING ANGLE ASSY
5	1		CABLE
6	1	700756	TWO SPEED CABLE SHIFT CAB MOUNT
7	1	35040-0000	TERMINAL EYE, 1/4-28
8	1	0-700754	TWO SPEED CABLE SHIFT LEVER, 1/4 * 1 1/2 * 16
9	1	0-700755	TWO SPEED CABLE SHIFT MOUNTING BKT, 3/16 * 3 7/8 * 12