

PARTS MANUAL

MANUAL NUMBER 725I
MODELS MS725 / MS875 / MS1050

!!!WARRANTY REGISTRATION INSIDE MUST BE COMPLETED AND RETURNED WITHIN 15 DAYS OF INVOICE SALE DATE OR WARRANTY IS REDUCED!!! DON'T LOSE YOUR FULL WARRANTY!!!



SCHULER MFG. & EQUIP. CO., INC.

63724 RICHLAND ROAD
GRISWOLD, IOWA 51535
PHONE - 712-774-2228
FAX - 712-774-2230

E-mail: schuler@schulermfg.net

Web Page: www.schulermfg.net

MS725 Serial No.'s Ending in 115 and up
MS875 Serial No.'s Ending in 106 and up
MS1050 Serial No.'s Ending in 125 and up

Date of Purchase

Model Number

Serial Number

Checked at Factory By

IMPORTANT NOTICE

*It is essential to return the White Copy of the
PURCHASER'S WARRANTY REGISTRATION
(located inside of the manual)
to Schuler Mfg. & Equip. Co., Inc., to validate the
machine warranty.*

MANUAL REVISIONS

CONTENTS
MS725 / MS875 / MS1050

PARTS

When Ordering Parts.....	1
Safety and Operational Decals.....	2-3
Rear Discharge 725-875-1050 Mixer Tub Assy.....	4-5
PTO Drivelines, Transfer Box, Screw.....	6-7
Dual Discharge Conveyor 119" & 101".....	8-10
Discharge Conveyor.....	11-12
Fold Up Extension-25".....	13-14
Fold Up Extension-40".....	15-16
Fold Up Extension-50".....	17-18
Fold Up Extension-65".....	19-20
Fold Up Extension-80".....	21-22
Front Discharge Conveyor Rubber Spout.....	23
Magnet Spout Assembly.....	24
Transfer Box.....	25
2-Speed Gearbox.....	26
MS725-875-1050 Frame.....	27-28
MS1050 Spindle.....	29-30
MS725-875 Spindle.....	31-32
Tires and Wheels.....	33
Wire Diagram.....	34
Rear Discharge Door (Option).....	35
Hydraulics Discharge Conveyor.....	36-37
Scale – Weigh Tronix.....	38
Scale – Digi-Star.....	39
2-Speed Gearbox Instructions.....	40
2-Speed Shift Cable Option.....	41
Side Discharge MS1050 Tub Assy.....	42-43
Spindle, Hutchinson Suspension.....	44-45
Tandem Axle, Leaf Spring Assy, Hutchinson.....	46-47
Hydraulic Side Shift Dual Discharge Tub.....	48-49

WHEN ORDERING PARTS

Always have the following information available for phone orders or included in your written order.

1. **Machine Model**
2. **Serial Number**
3. **A general parts description can be very helpful to insure shipping the correct part. Often the customer does not know the part number, or has read the wrong number from the manual. Asking the following questions, where applicable, can help eliminate many questions on what the customer needs.**
 - a. **Number of teeth on sprocket or gear.**
 - b. **Bore size / OD of part.**
 - c. **Length of part, flight, auger, etc.**
 - d. **Is pulley a cast spoke / steel stamping.**
 - e. **Any other questions that may be applicable.**
4. **Address all parts orders to:**

Schuler Mfg. & Equip. Co., Inc.
63724 Richland Rd
Griswold, IA 51535
5. **For phone orders call – 712-774-2228.**
 - a. **Collect Calls – Please be advised that Schuler Mfg. & Equip. Co., Inc. does not accept collect telephone calls.**

Schuler Mfg. & Equip. Co., Inc. takes pride in fast customer service. Same day parts shipments can be made on UPS if the order is called in before 10:00 AM and the parts are in stock.

All part descriptions and dimensions are reference to inches unless specified otherwise.

SAFETY AND OPERATIONAL DECALS

SAFETY AND OPERATIONAL DECALS

SAFETY DECALS ARE PLACED ON THE MIXER/FEEDER FOR THE PROTECTION OF THE OPERATOR OR ANY PERSON NEAR THE UNIT.

Be sure everyone who operates this equipment understands all the information, warning, caution, and danger decals.

Keep the decals CLEAN so they are readable. This applies to all caution, warning, and danger decals.

It is the OWNER'S RESPONSIBILITY to provide information for safe operation of this machine.

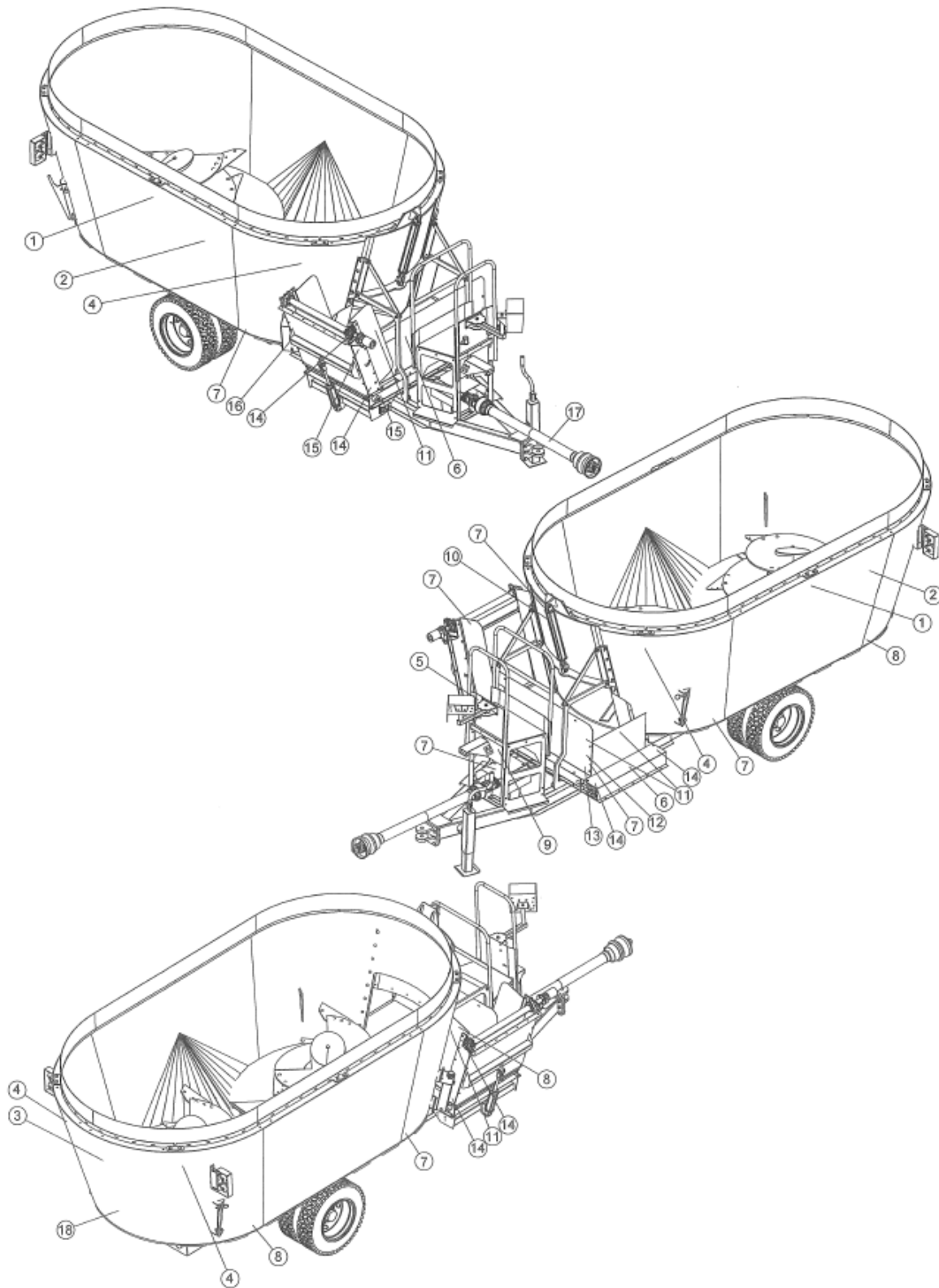
Replace any damaged or worn decals. Once any part of a decal becomes non-readable, it should be replaced. The part numbers for the decals are located in the lower RH corner of the decal, and listed in this manual on the following pages. Replacement decals may be ordered through your dealer or the address below.

When replacing decals, be sure the surface area is clean and dry, peel the backing off the decal, and apply to the machine. Be sure to wipe with a clean cloth to rub out all air bubbles to assure a good seal. For best adhesion, decals should be applied in temperatures of 50 degrees (F) or warmer.

DECALS

ITEM	QTY	PART NUMBER	DESCRIPTION
1	2	10010-0105	DECAL, SCHULER STRIPE
2	2	10010-0108	DECAL, SCHULER, MS725
	2	10010-0109	DECAL, SCHULER, MS875
	2	10010-0104	DECAL, SCHULER, MS1050
3	1	10010-0100	DECAL, SCHULER, QUALITY BUILT, TDC
4	4	10010-0230	DECAL, DANGER, ROTATING AUGER HAZARD
5	1	10010-0664	DECAL, IMPORTANT, TIGHTEN WHEEL LUGS
6	3	10010-0225	DECAL, DANGER, DO NOT USE THIS SHIELD FOR STEP
7	6	10010-0921	DECAL, YELLOW REFLECTIVE TAPE
8	3	10010-0920	DECAL, RED REFLECTIVE TAPE
9	1	FEMA	
10	1	10010-0680	DECAL, 0, 1, 2, 3, C
11	4	10010-0317	DECAL, WARNING, KEEP OUT MOVING PARTS, FAILURE TO...
12	1	10010-0550	DECAL, VM OPERATING INSTRUCTIONS
13	1	10010-0421	DECAL, IMPORTANT, READ OPERATORS MANUAL
14	6	10010-0520	DECAL, GREASE GUN, 500 HOURS
15	2	10010-0340	DECAL, WARNING, HIGH PRESSURE FLUID HAZARD
16	1	10010-0663	DECAL, IMPORTANT, OIL LEVEL (SIGHT GAUGE)
17	1	10010-0210	DECAL, DANGER, PTO, ROTATING DRIVELINE
18	1	10010-0500	DECAL, SLOW MOVING VEHICLE
VMMDL-1125 INCLUDES			
	1	10010-0671	DECAL, IMPORTANT, USE ONLY HIGH SPED AT 4000 LB. LOAD
	1	10010-0663	DECAL, IMPORTANT, OIL LEVEL (SIGHT GAUGE)
	1	10010-0662	DECAL, 2-SPEED GEAR PATTERN
	1	10010-0700	DECAL, 2-SPEED, TDC

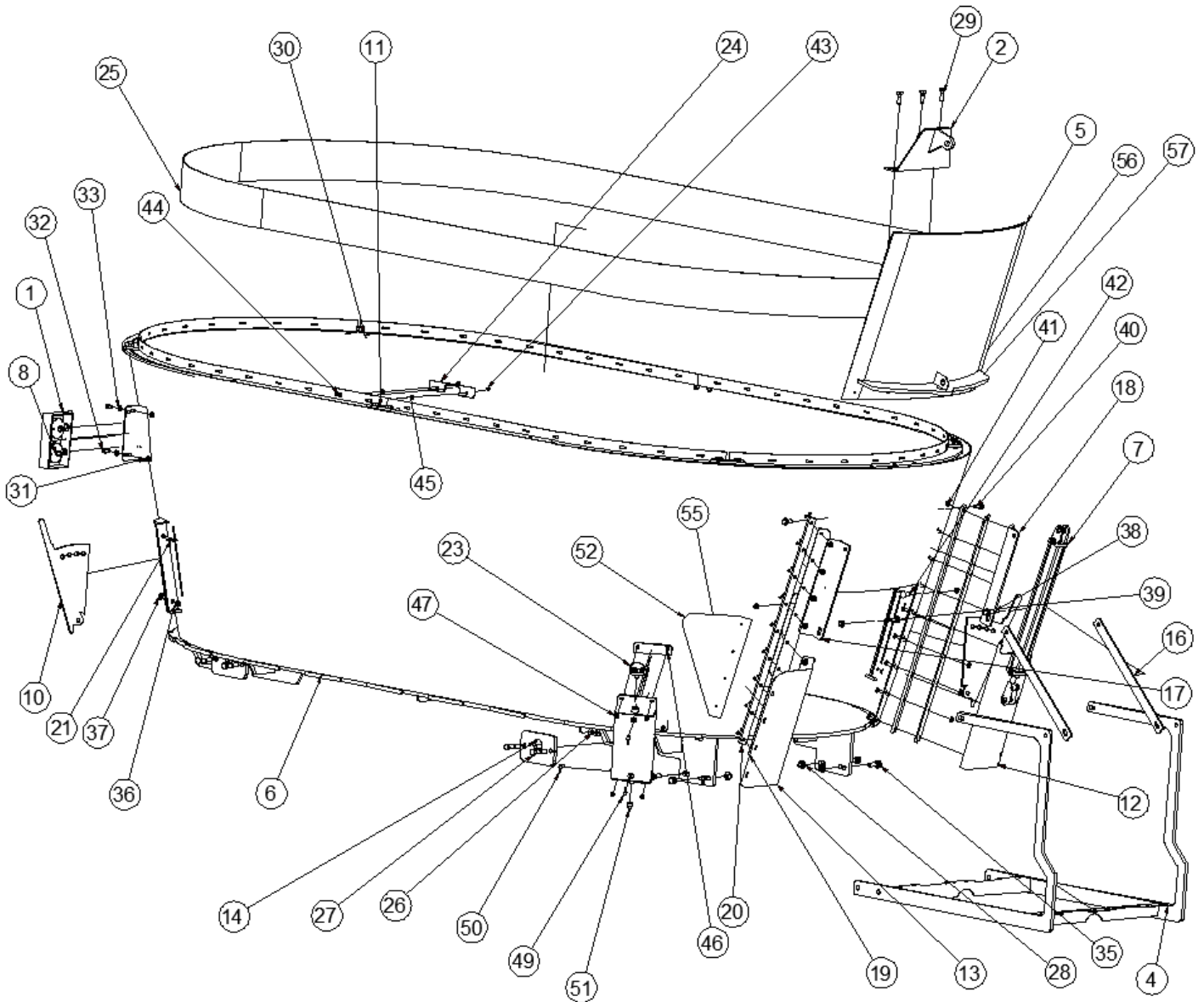
SAFETY DECALS



NOTICE: Immediately replace all worn or damaged decals. Please supply the unit's Serial Number with decal part number when ordering.

MS725 – MS875 – MS1050 MIXER TUB ASSEMBLY

[MS-200010](#)



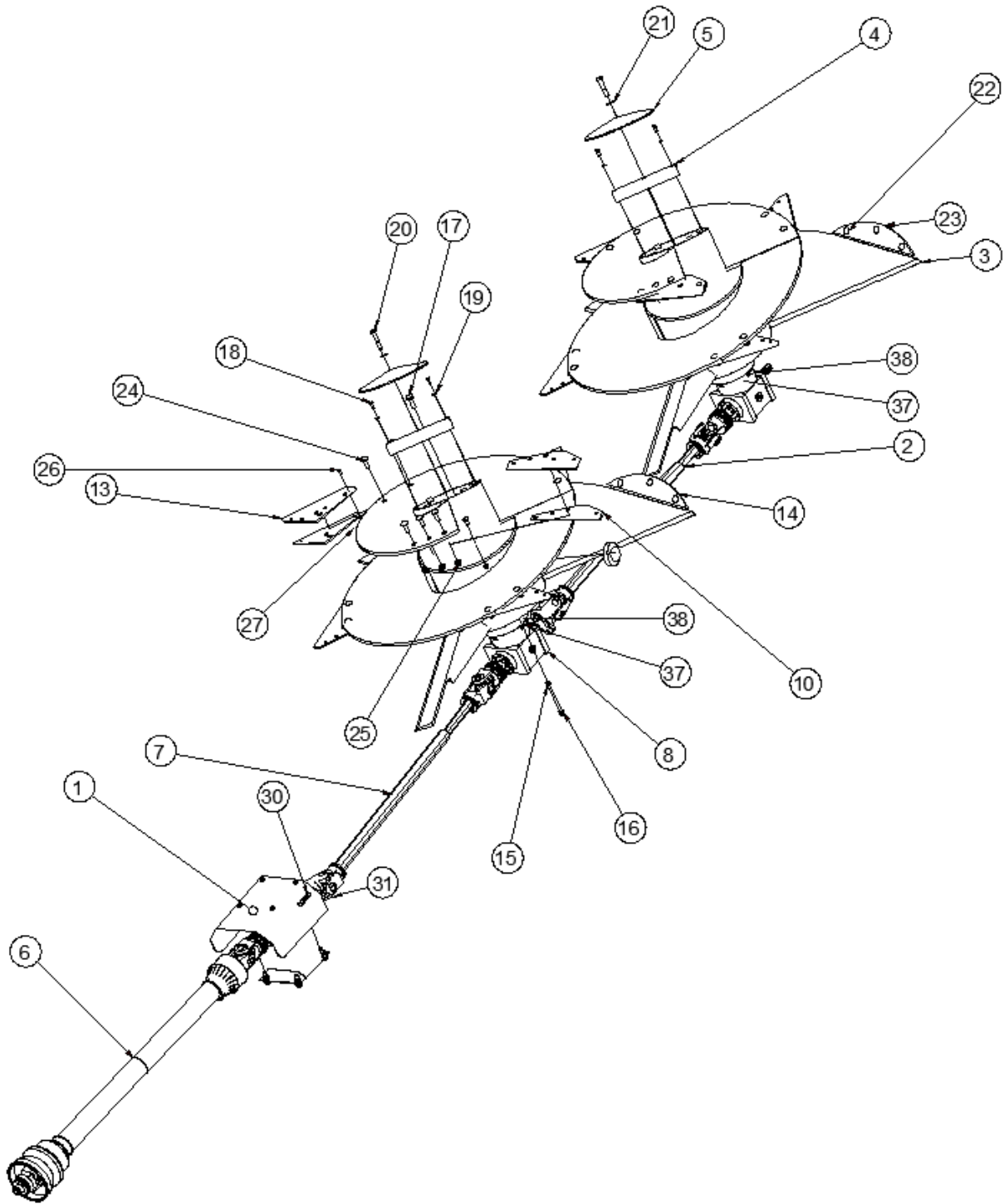
MS725 – MS875 – MS1050 REAR DISCHARGE OPTION

ITEM	QTY	PART NUMBER	DESCRIPTION
2	1	0-700381	DISCHARGE DOOR CYLINDER BRKT
	1	0-700578	UPPER CYLINDER BRACKET, V875, V1050, V5020
5	1	0-700506	DISCHARGE DOOR MS4020, 5020, 725, 875, 1050
7	1	33E00-2530	HYD CYLINDER, 2 1/2 * 30, SAE #8 PORTS
19	2	0-700092	DOOR GUIDE STRAP 3/8 * 3 * 50
20	2	0-700093	DOOR SPACER STRAP 5/8 * 1 1/2 * 50
	2	0-700445	REAR DOOR SHIELD MOUNT 1/4 * 5 1/2 * 8
	1	0-700443	REAR DOOR SHIELD
	1	0-700444	WIRE COVER 14 GA * 3 1/2 * 32
56	1	0-700390	FRONT DOOR SEAL STRAP 7 GA * 1 1/2 * 38 11/16
57	1	40002-0239	RUBBER SEAL TS DOOR, 2 1/8 * 38 5/8

MS725 – MS875 – MS1050 MIXER TUB ASSEMBLY

ITEM	QTY	PART NUMBER	DESCRIPTION
1	2	0-700300	LIGHT KIT BRACKET, BOLT-ON, HOLDS TWO LIGHTS
2	1	0-700381	DISCHARGE DOOR CYLINDER BRKT
	1	0-700578	UPPER CYLINDER BRACKET, V875, V1050, V5020
3	1	0-700351	OIL RESERVOIR, MULTI SCREW
4	1	0-700387	FRONT CONVEYOR CRADDL, FRONT DISCHARGE
5	1	0-700506	DISCHARGE DOOR MS4020, 5020, 725, 875, 1050
6	1	0-700627	TUB ASSEMBLY, FRONT DISCHARGE, MECH DRIVE TRAILER, COMER, 725
	1	0-700628	TUB ASSEMBLY, FRONT DISCHARGE, MECH DRIVE, COMER, 875
	1	0-700629	TUB ASSEMBLY, FRONT DISCHARGE, MECH DRIVE, COMER, 1050
	1	0-700646	TUB ASSEMBLY, FRONT DISCHARGE, MECH DRIVE, COMER, 1050H
7	1	33E00-2530	HYD CYLINDER, 2 1/2 * 30, SAE #8 PORTS
8	4	10050-0010	LIGHT KIT FOR AG EQUIPMENT, W/ 30' HARNESS
9	5	0-870094	WIRE & HOSE GUIDE 3/16 * 1 * 5 1/8
10	5	0-700379	HAY RESISTOR PLATE 1/2 * 11 5/8 * 18
11	6	0-700369	SPLICE PLATE, 1/2 * 3 * 7, MULTI SCREW
12	1	0-700405-R	FRONT DISCHARGE DOOR SHIELD RH, 12 GA * 13 * 27 1/2
13	1	0-700405-L	FRONT DISCHARGE DOOR SHIELD LH, 12 GA * 13 * 27 1/2
14	8	0-700370	WEIGH BAR BRACKET, 3/4 * 5 * 9
	2	0-700079	WEIGH BAR BRACKET, 3/4 * 6 * 9, TWINSREW
16	2	0-700394	CONVEYOR KNEEBRACE, 3/8 * 2 * 27 1/2
17	1	0-700393-R	CONVEYOR HANGER, 3/8 * 5 1/2 * 21 3/4
18	1	0-700393-L	CONVEYOR HANGER, 3/8 * 5 1/2 * 21 3/4
19	2	0-700092	DOOR GUIDE STRAP 3/8 * 3 * 50
20	2	0-700093	DOOR SPACER STRAP 5/8 * 1 1/2 * 50
21	2	73D00-1029	BALL, SPRING PIN, 5/8 DIA * 2 1/2
23	1	26SPG-0001	FILLER CAP, PLANETARY RESERVOIR
24	34	0-700372	RUBBER EXTENSION STRAP, 1/4 * 2 * 12
	36	0-700372	RUBBER EXTENSION STRAP, 1/4 * 2 * 12
25	1	960B0-0800-000	2 PLY 220, 3/8 * 8 WIDE
	1	960B0-0800-000	2 PLY 220, 3/8 * 8 WIDE
26	2	74040-0000	1/4-28 STRAIGHT GREASE ZERK
27	8	70HC5-1228	3/4-10 * 3 1/2 HHCS, GRD 5, ZP
28	12	71WC2-0120	3/4-10 FLANGE LOCKNUT, ZP
29	15	70HC5-1016	5/8-11 * 2 HHCS GRD 5, ZP
30	19	71WC2-0100	5/8-11 FLANGE LOCKNUT, ZP
31	28	71WC2-0080	1/2-13 FLANGE LOCKNUT, ZP
32	4	70HC5-0808	1/2-13 * 1 HHCS, GRD 5, ZP
33	12	72FH0-0080	1/2 FLAT WASHER, ZP
34	4	72FH0-0120	3/4 FLAT WASHER, ZP
35	4	70HC5-1220	3/4-10 * 2 1/2 HHCS, GRD 5, ZP
36	2	71UC2-0100	5/8-11 TOP LOCKNUT, ZP
37	2	70HC5-1020	5/8-11 * 2 1/2 HHCS, GRD 5, ZP
38	2	70HC5-1016	5/8-11 * 2 HHCS GRD 5, ZP
39	4	71WC2-0100	5/8-11 FLANGE LOCKNUT, ZP
40	2	70HC5-1014	5/8-11 * 1 3/4 HHCS, GRD 5, ZP
41	18	70CC5-0820	1/2-13 * 2 1/2 CARRIAGE BOLT, GRD 5, ZP
42	8	70CC9-0820	1/2-13 * 2 1/2 CARRIAGE BOLT, GRD L9, ZP
43	72	71UC2-0050	5/16-18 TOP LOCKNUT, ZP
44	72	70HC5-0512	5/16-18 * 1 1/2 HHCS, GRD 5, ZP
45	144	72FH0-0050	5/16 FLAT WASHER, ZP
46	4	70HC5-0608	3/8-16 * 1 HHCS, GRD 5, ZP
47	4	71WC2-0060	3/8-16 FLANGE LOCKNUT, ZP
48	4	70HC5-0812	1/2-13 * 1 1/2 HHCS, GRD 5, ZP
49	2	33HT4290-6-4	3/8 ID HOSE BARB TO 90 DEG ELBOW 1/4-NPT MALE PIPE
50	2	33HT4290-8-4	1/2 ID HOSE BARB TO 90^ ELBOW 1/4-NPT MALE PIPE
51	1	33HT5406-P-12	3/4-NPT MALE HEX HEAD PLUG
52	1	0-700433	CONVEYOR SEAL, 12 GA * 12 * 22
53	1	0-700441	FOLD UP EXTENSION RUBBER SEAL, 1/8 RED BACKED RUBBER * 9 * 9

PTO DRIVELINES, TRANSFER BOX, SCREW,
AND OPTIONAL 2-SPEED GEARBOX
MS-200020

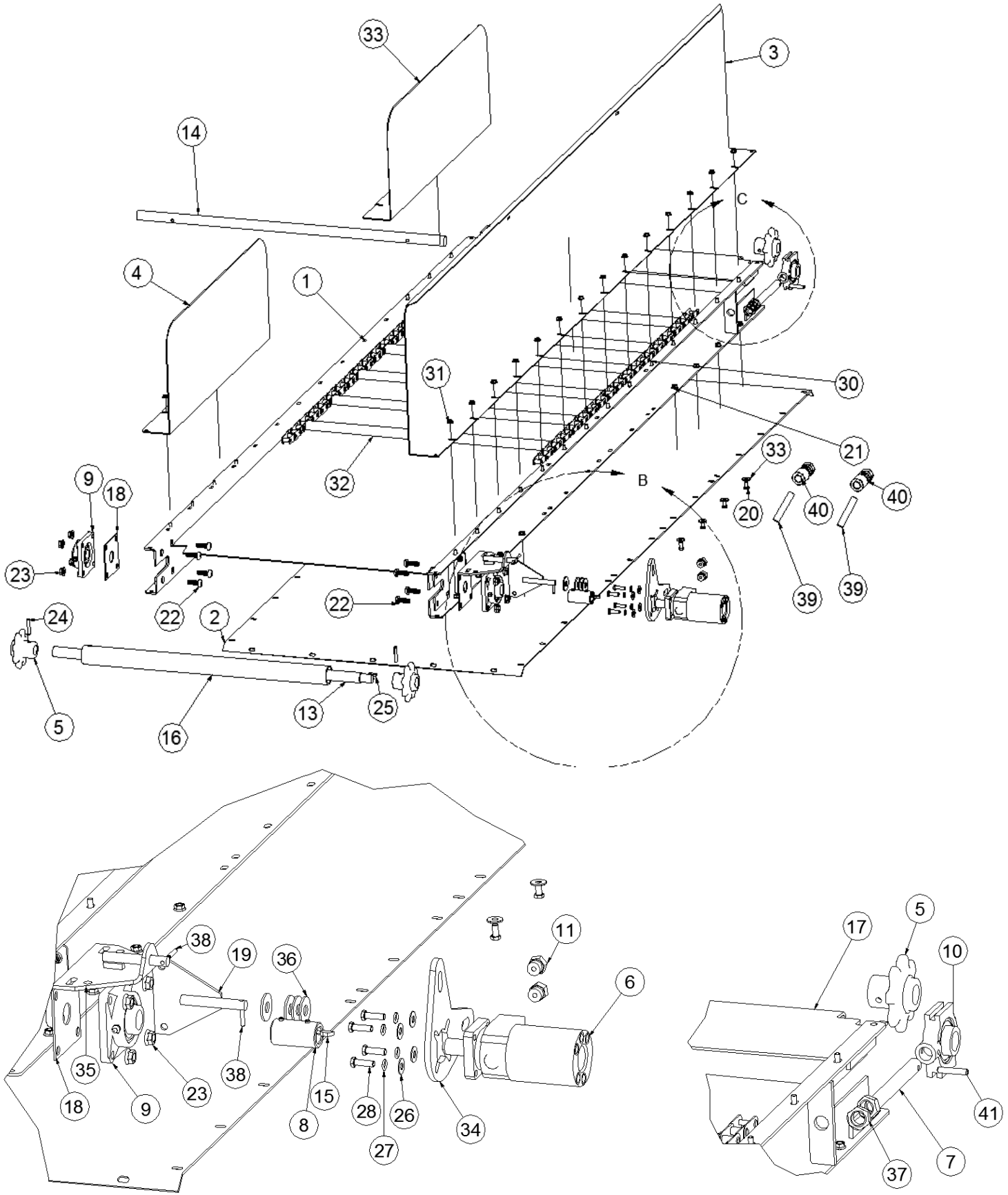


PTO DRIVELINES, TRANSFER BOX, SCREW, AND OPTIONAL 2-SPEED GEARBOX

In order to have proper shear protection, use only
Genuine Schuler replacement shear bolts.

ITEM	QTY	PART NUMBER	DESCRIPTION
1	1	VMMDL-1120	SINGLE SPEED DRIVE FOR PLANETARY, MS VERTICAL MIXERS
	1	VMMDL-1125	TWO-SPEED DRIVE FOR PLANETARY, 1.0-1.5 RATIO, 550, 750 & 725
2	1	25B06-0049	PTO UNSHIELDED, 48 CENTERS, (2) 1 3/4-20 TAPER LOCK, SIZE 6
3	2	0-700620	SCREW ASSY, MECH DRIVE, COMER, 4020 & 725, 1 7/8 TURN
	2	0-700621	SCREW ASSY, MECH DRIVE, COMER, 5020 & 875, 2 1/4 TURNS
	2	0-700622	SCREW ASSY, MECH DRIVE, COMER, 1050
4	2	0-700471	CAP ANGLE, BOLT-ON, 16" AUGER TUBE
5	2	0-700475	SCREW CAP FOR MULTI SCREW, 16" AUGER TUBE
6	1	25B08-0051	PTO COMPLETE, 1000 RPM, 1 3/4-20 & 1 3/4-20, SIZE 8, CV
	1	25B08-0050	PTO COMPLETE, 1000 RPM, 1 3/8-21 & 1 3/4-20, SIZE 8, CV
7	1	25B08-1150	PTO, 1 3/4-20 & 1 3/4-20 WITH SHEAR 2700 NM BOLT, SIZE 8
	1	25B06-1135	PTO, 1 3/4-20 & 1 3/4-20, 2000 NM SHEAR SIZE 6, FOR COMER/N
8	2	26CPG-3240	COMER PGA 1603 (TOTAL 25.89:1 RATIO) CHINA
	2	26CPG-3238	COMER PGA 1602 540 RPM (TOTAL 13.4:1 RATIO) CHINA
10	2	0-700589	SMALL BACKING PLATE 1/2 * 6 * 13 3/8 / FITS PN#700377
13	12	0-700377	SHORT CUTTING KNIFE, 6.0 MM
	14	0-700377	SHORT CUTTING KNIFE, 6.0 MM
	18	0-700377	SHORT CUTTING KNIFE, 6.0 MM
14	2	0-700162	EDGE DEFLECTOR, 1/2 * 4 * 21 3/4
15	24	70HM8-2255	M22-1.5 * 55 HHCS CLASS 10.9, BLACK
16	24	71UM8-0240	M24-3.0 TOP NYLON INSERT LN CLASS 8.8, ZP
17	30	70HM8-1650	M16-2.0 * 50 HHCS, CLASS 8.8, ZP
	30	70HM8-2255	M22-1.5 * 55 HHCS CLASS 10.9, BLACK
18	4	70HC5-0608	3/8-16 * 1 HHCS, GRD 5, ZP
19	4	72FH0-0060	3/8 FLAT WASHER, ZP
20	2	70HC5-1028	5/8-11 * 3 1/2 HHCS GRD 5,, ZP
21	2	72M10-0014	MACHINE BUSHING, 5/8 ID * 1 1/8 OD * 14 GA, ZP
22	4	70CC5-1014	5/8-11 * 1 3/4 CARRIAGE HD, GRD 5, ZP
23	10	71UC2-0100	5/8-11 TOP LOCKNUT, ZP
24	24	70CC5-1018	5/8-11 * 2 1/4 CARRIAGE BOLT, GRD 5, ZP
	28	70CC5-1018	5/8-11 * 1 3/4 CARRIAGE HD, GRD 5, ZP
	36	70CC5-1018	5/8-11 * 1 3/4 CARRIAGE HD, GRD 5, ZP
25	48	71WC2-0100	5/8-11 FLANGE LOCKNUT, ZP
	56	71WC2-0100	5/8-11 FLANGE LOCKNUT, ZP
	72	71WC2-0100	5/8-11 FLANGE LOCKNUT, ZP
26	12	70CC5-0610	3/8-16 * 1 1/4 CARRIAGE BOLT, GRD 5, ZP
	14	70CC5-0610	3/8-16 * 1 1/4 CARRIAGE BOLT, GRD 5, ZP
	18	70CC5-0610	3/8-16 * 1 1/4 CARRIAGE BOLT, GRD 5, ZP
27	12	71WC2-0060	3/8-16 FLANGE LOCKNUT, ZP
	14	71WC2-0060	3/8-16 FLANGE LOCKNUT, ZP
	18	71WC2-0060	3/8-16 FLANGE LOCKNUT, ZP
30	1	70HM8-1055	M10-1.5 * 55 HHCS, CLASS 8.8, BLACK SHEAR BOLT, MS1050
	1	70HM8-0817	M8-1.25 * 55 HHCS CLASS 8.8 SHEAR BOLT, MS725 875
31	1	71UM8-0100	M10-1.50 TOP LOCK NUT, ZP MS1050
	1	71UM8-0800	M8-1.25 TOP LOCK NUT GRD 8.8, ZP NUT, MS725 875
32	2	33HT5400-N-2-1.5	1/8-NPT MALE TO 1/8-NPT MALE PIPE NIPPLE 1.50" LONG
33	2	33HT5504-2	1/8-NPT FEMALE TO 1/8-NPT FEMALE ELBOW
34	2	33HT1404-2-2	STEEL PIPE SWIVEL ADAPTOR 1/8-27 NPTF x 1/8-27 NPSM
35	2	33NH1-0720	1/8-3000 PSI * 72, (2) 1/8-NPT MALE ENDS
36	2	74020-0000	1/8-NPT GREASE ZERK, STRAIGHT
37	2	26BTB-1001	SEAL T-BOX BREVINI RA42 & COMER 3003 /1603 , 45X72X8
38	2	26CTB-1002	SEAL, DOUBLE LIP, 55 x 100 x 10 FOR 1603 & 3003 COMER

DUAL DISCHARGE CONVEYOR 119" & 101"
MS-00050



DETAIL B

DETAIL C

DUAL DISCHARGE CONVEYOR 119" & 101"

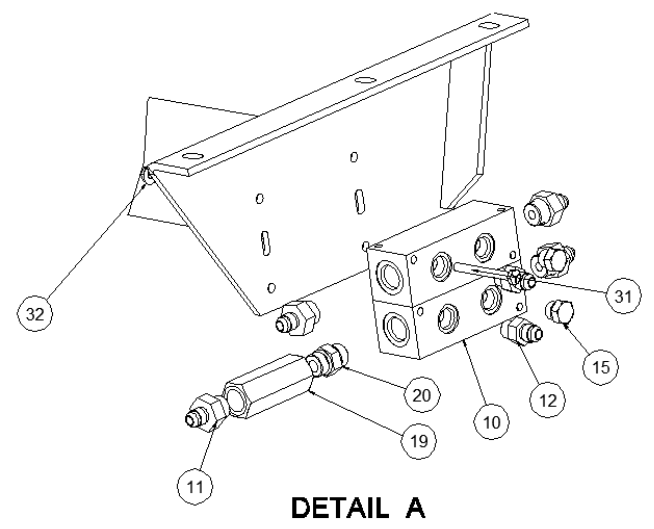
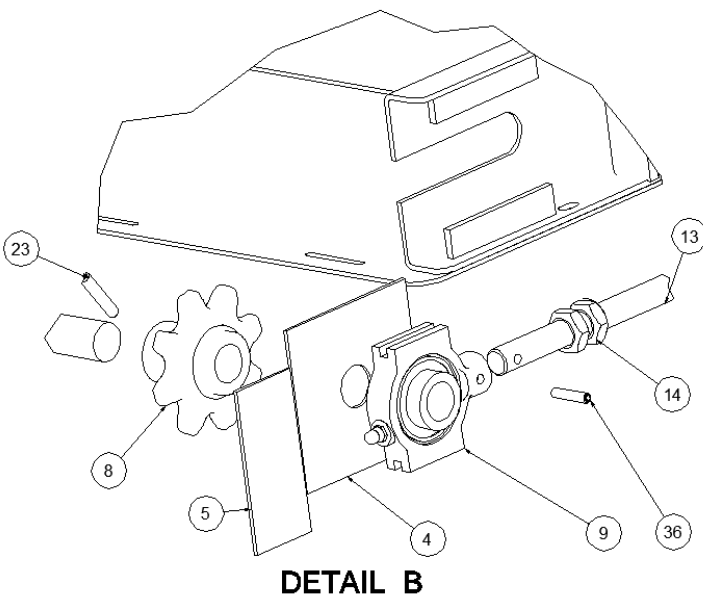
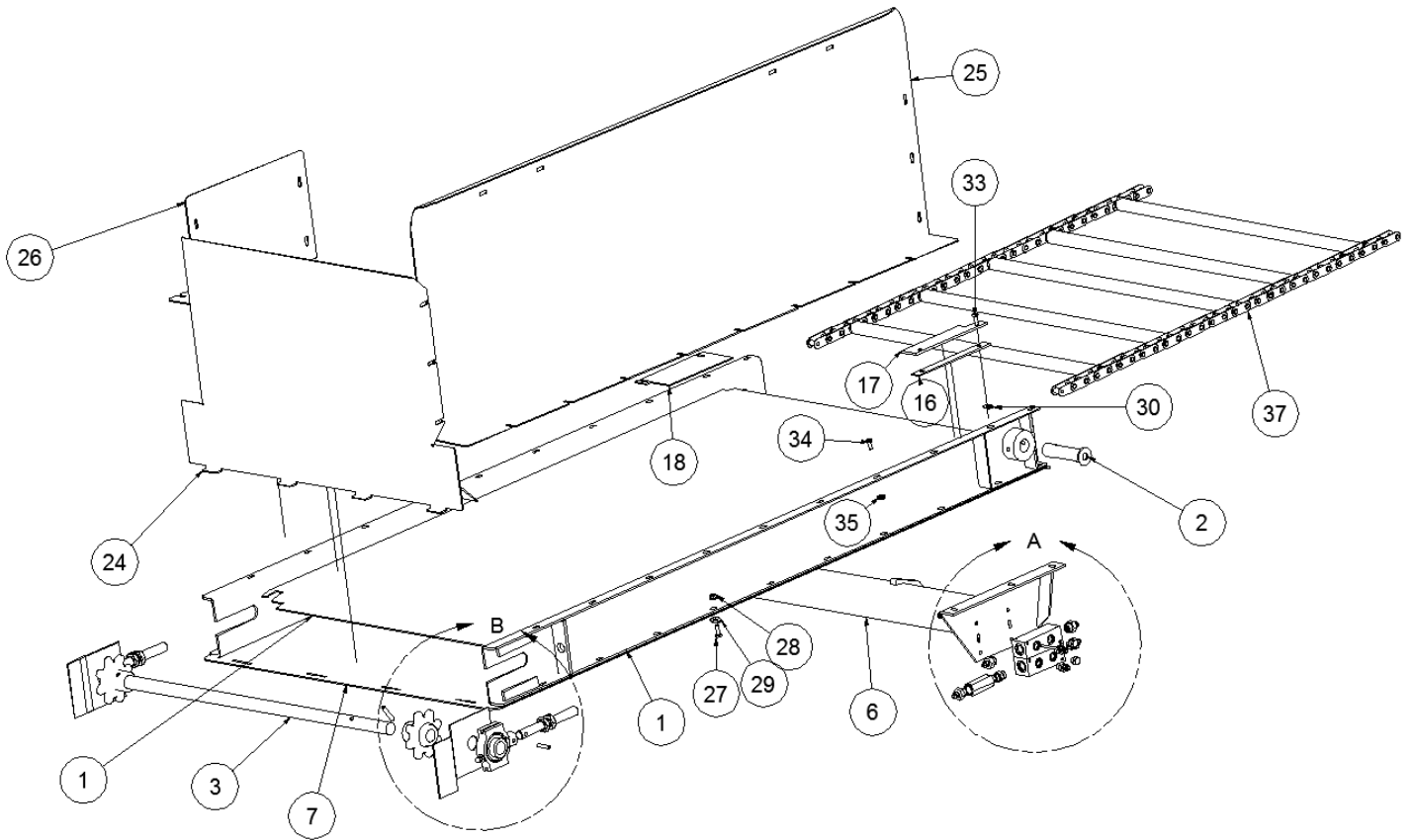
ITEM	QTY	PART NUMBER	DESCRIPTION
1	1	0-700421	FRONT DISCHARGE DUAL DIRECTION CONVEYOR, 119 OAL
1	1	0-700567	FRONT DISCHARGE DUAL DIRECTION CONVEYOR, 101 OAL
2	1	0-700423	DUAL DISCHARGE CONVEYOR BOTTOM 10 GA * 39 1/2 * 108
2	1	0-700565	DUAL DISCHARGE CONVEYOR BOTTOM 10 GA * 39 1/2 * 92
3	1	0-700429	DUAL DISCHARGE FRONT SHIELD , 12 GA * 23 3/4 * 117
3	1	0-700566	DUAL DISCHARGE FRONT SHIELD , 12 GA * 23 3/4 * 101
4	1	0-700430	DUAL DISCHARGE REAR SHIELD , 12 GA * 17 3/4 * 36 1/2
5	4	16C10-0810	SPKT CAST, 8T, 1 1/4 B, 3/8 PH
6	1	33BAG-0000	HYD MOTOR, 11.9 CU IN
7	2	70FC5-1464	7/8-9 * 8, THREADED STUD WITH PINHOLE, B7
8	1	26000-1000	SHAFT COUPLER, 1 5/8 OD * 1 ID * 3 OAL, 1/4 KW PN #511450
9	2	17400-2210	BRG 4-BOLT CAST, 1 1/4 B, III LIP SEAL, 3 5/8 HOLE CENTER
10	2	17700-0010	BRG TAKE UP , 1 1/4 BORE
11	2	33HT6400-6-10	9/16-18 37^ JIC TO 7/8-14 O-RING
13	1	0-700557	SHAFT, FOLD UP EXT DRIVE, 1 1/4 CRR * 43 5/8-CA557 CHAIN
14	1	0-700416	SHAFT, FRONT CONVEYOR IDLER, 1 1/4 CRR * 40 5/8 CA557 CHAIN
15	1	33BA0-0008	WOODRUFF KEY, AB, AC, AE MOTOR
16	1	0-700413	SHAFT TUBE COVER 2 SCH 40 PVC PIPE * 32 3/8
17	1	0-700422	FRONT DUAL DISCHARGE SLIDER
18	1	0-700404	DRIVE SHAFT SLOT COVER , 12 GA * 4 5/8 * 4 5/8
19	1	0-700548	HYD MOTOR MOUNT, BOLT-ON
20	26	70HC5-0606	3/8-16 * 3/4 HHCS, GRD 5, ZP
21	26	71WC2-0060	3/8-16 FLANGE LOCKNUT, ZP
22	8	70BH5-0812	1/2-13 * 1 1/2 BUTTON HD SOCKET CAP SCREW, ZP, GRD 5
23	8	71WC2-0080	1/2-13 FLANGE LOCKNUT, ZP
24	4	73S00-0616	3/8 * 2 SPIROL PIN, HBK
25	1	0-130212	KEY, 1/4 CD * 1 1/4
26	28	72FH0-0060	3/8 FLAT WASHER, ZP
27	4	72LH0-0060	3/8 SPLIT LOCK WASHER, ZP
28	4	70HC5-0610	3/8-16 * 1 1/4 HHCS, GRD 5, ZP
29	34	72FH0-0050	5/16 FLAT WASHER, ZP
30	34	70HC5-0506	5/16-18 x 3/4 HHCS, GRADE 5
31	34	71WC2-0050	5/16-18 FLANGE LOCKNUT, ZP
32	1	0-700397	FRONT DISCHARGE CONVEYOR CHAIN, CA557
	2	23x81-090A	81X CONVEYOR CHAIN, 90 PITCH INC CL, 22 ATT (2 PER ASSY)
33	1	0-700431	DUAL DISCHARGE REAR SIDE SHIELD , 12 GA * 17 3/4 * 36 1/2
34	1	0-700453	CONVEYOR MOTOR MOUNT 3/8 * 8 * 8
35	1	0-700454	CONVEYOR MOTOR MOUNT ASSY
36	8	72M10-0014	MACHINE BUSHING, 5/8 ID * 1 1/8 OD * 14 GA, ZP
37	2	71JC2-0140	7/8-9 JAM NUT, ZP
38	2	73E00-0410	1/4 * 1 1/4 SPRING PIN, ZP
39	2	33PH2-1621	3/8-3000 PSI * 165, 9/16-18 STRAIGHT BOTH ENDS
40	2	33QPC-4000	PIONEER COUPLER, MALE TIP 3/4 O/R
41	2	73S00-0512	5/16 * 1 1/2 SPIROL PIN, HBK
42	2	17951-1210	BRONZE BUSHING W/ FLANGE, 1 1/2 OD * 1 1/4 ID * 1 3/4
DISCHARGE CONVEYOR CHAIN PARTS			
1		700447	FLIGHT, VM CONVEYOR FRONT DISCHARGE W/ 4-23C01-00CL, CA557 CL
1		23C01-00CL	CA-557 CL
1		23C01-00HL	CA-557 OL
1		23C01-00RL	CA-557 ROLLER LINK
81X CHAIN PARTS			
		23X81-00CL	81X CONNECTOR LINK
		23X81-00HL	81X OFFSET LINK
		23X81-00RL	81X ROLLER LINK
		0-700701	CONVEYOR CHAIN FLIGHT, 1 1/4 * 1 1/4 * 1/4 * 28 1/4

DUAL DISCHARGE CONVEYOR 119" & 101"

ITEM	QTY	PART NUMBER	DESCRIPTION
1	1	0-700725	FRONT DIS DUAL DIRECTION CONVEYOR, 101 OAL, 81X CHAIN
1	1	0-700726	FRONT DUAL DISCHARGE CONVEYOR, 119 OAL, 81X CHAIN
33	1	0-700579-L	DUAL DISCHARGE REAR SHIELD LH, 12 GA * 17 3/4 * 24
4	1	0-700579-R	DUAL DISCHARGE REAR SHIELD RH, 12 GA * 17 3/4 * 24
5	4	16C30-0610	SPKT 81XB6, 6T, 1 1/4 B, 3/8 PH
6	1	33BAM-0000	HYD MOTOR, 18.0 CU IN
13	1	0-700702	SHAFT, FOLD UP EXT DRIVE, 1 1/4 CRR * 43 3/4, 81X CHAIN
14	1	0-700703	SHAFT, FRONT CONVEYOR IDLER, 1 1/4 CRR * 40 3/4, 81X CHAIN
17	1	0-700724	FRONT DUAL DISCHARGE SLIDER, 81X CHAIN
24	4	73S00-0622	3/8 * 2 3/4 SPIROL PIN, HBK
32	2	23X81-090A	81X CONVEYOR CHAIN, 90 PITCH INC CL, 22 ATT (2 PER ASSY)
42	2	17951-1210	BRONZE BUSHING W/ FLANGE, 1 1/2 OD * 1 1/4 ID * 1 3/4

DISCHARGE CONVEYOR

[MS-000060](#)

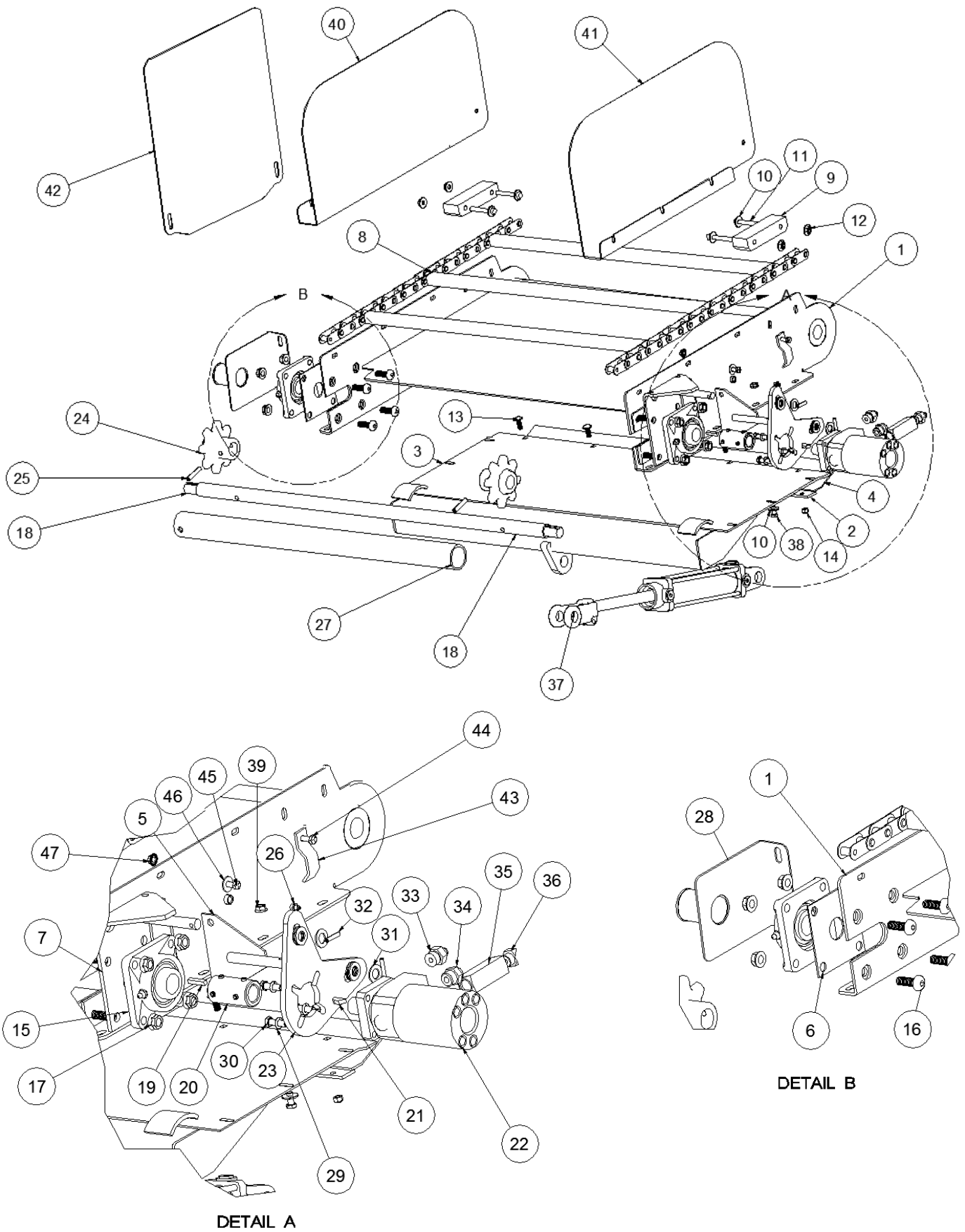


DISCHARGE CONVEYOR

ITEM	QTY	PART NUMBER	DESCRIPTION
1	1	0-700398	FRONT DISCHARGE CONVEYOR SINGLE DIRECTION CA 557
	1	0-700696	FRONT DISCHARGE CONVEYOR SINGLE DIRECTION 81X CHAIN
2	2	0-700412	CONVEYOR EXTENTION PIN
3	1	0-700416	SHAFT, FRONT CONVEYOR IDLER, 1 1/4 CRR * 40 5/8 CA557 CHAIN
	1	0-700703	SHAFT, FRONT CONVEYOR IDLER, 1 1/4 CRR * 40 3/4 , 81X CHAIN
4	2	0-700418	CONVEYOR SLOT COVER 1/8 UHMW * 5 1/2 * 5 1/2
5	2	0-700419	CONVEYOR SLOT COVER 1/8 UHMW * 2 1/2 * 5 1/4
6	1	0-700549	LOWER LIFT BRACKET ASSY FOR CONVEYOR TO LAY FLAT
	1	0-700733	LOWER LIFT BRACKET ASSY FOR CONVEYOR,TWO CYLINDERS
7	1	0-700554	FRONT DISCHARGE CONVEYOR BOTTOM 10 GA * 39 1/2 * 78
8	2	16C10-0810	SPKT CAST, 8T, 1 1/4 B, 3/8 PH
		16C30-0610	SPKT 81XB6, 6T, 1 1/4 B, 3/8 PH
9	2	17700-0010	BRG TAKE UP , 1 1/4 BORE
10	2	33F00-1209	HYD HEADER MANIFOLD,(2) 3/4 O/R PORT,(2) 9/16 O/R PORT
11	1	33HT6400-6-8	9/16-18 ORFS TO 3/4-16 O-RING 37^ JIC
12	4	33HT3400-6	9/16-18, 37* JIC TO 9/16-18 O-RING
13	2	70FC5-1464	7/8-9 * 8, THREADED STUD WITH PINHOLE, B7
14	4	71JC2-0140	7/8-9 JAM NUT, ZP
15	2	33HT6408-8	3/4-16 O-RING HEX HEAD PLUG
16	1	0-700438	SLIDE STRAP SPACER , 7 GA * 1 * 10
17	1	0-700439	SLIDE STRAP CAP , 7 GA * 2 * 10
18	1	0-700434	CHAIN COVER , 12 GA * 5 * 11 1/2
19	1	33L00-1014	CHECK VALVE WITH RESTRICTOR, 1/16 ORIFICE, #8 O-RING PORTS
20	1	33HT6403-8-8	3/4-16 MALE O-RING TO 3/4-16 MALE O-RING UNION
23	2	73S00-0616	3/8 * 2 SPIROL PIN, HBK
	2	73S00-0622	3/8 * 2 3/4 SPIROL PIN, HBK
24	1	0-700640	FRONT CONVEYOR BACK SHIELD ASSY, CA557 CHAIN
		0-700697	FRONT CONVEYOR BACK SHIELD ASSY FOR 81X CHAIN
25	1	0-700638	FRONT DISCHARGE SMALL SHIELD ,12 GA * 15 1/4 * 16
26	1	0-700639	FRONT SHIELD CONVEYOR , 12 GA * 28 1/4 * 69
27	20	70HC5-0608	3/8-16 * 1 HHCS, GRD 5, ZP
28	20	71WC2-0060	3/8-16 FLANGE LOCKNUT, ZP
29	20	72FH0-0060	3/8 FLAT WASHER, ZP
30	21	72FH0-0050	5/16 FLAT WASHER, ZP
31	4	70HC5-0420	1/4-20 * 2 1/2 HHCS, GRD 5, ZP
32	4	71WC2-0040	1/4-20 FLANGE LOCKNUT, ZP
33	2	70HC5-0510	5/16-18 * 1 1/4 HHCS, GRD 5, ZP
34	17	70HC5-0506	5/16-18 * 3/4 HHCS, GRD 5, ZP
35	18	71WC2-0050	5/16-18 FLANGE LOCKNUT, ZP
36	2	73S00-0512	5/16 * 1 1/2 SPIROL PIN, HBK
37	1	0-700397	FRONT DISCHARGE CONVEYOR CHAIN, CA557
	2	23X81-090A	81X CONVEYOR CHAIN, 90 PITCH INC CL, 22 ATT (2 PER ASSY)
38	1	33HT6801-6-8	9/16-18 TO 3/4-16 O-RING 90^ STR THREADED ELBOW CONN

FOLD-UP EXTENSION TO LAY FLAT FOR CONVEYOR, 25" LONG

[MS-00070](#)

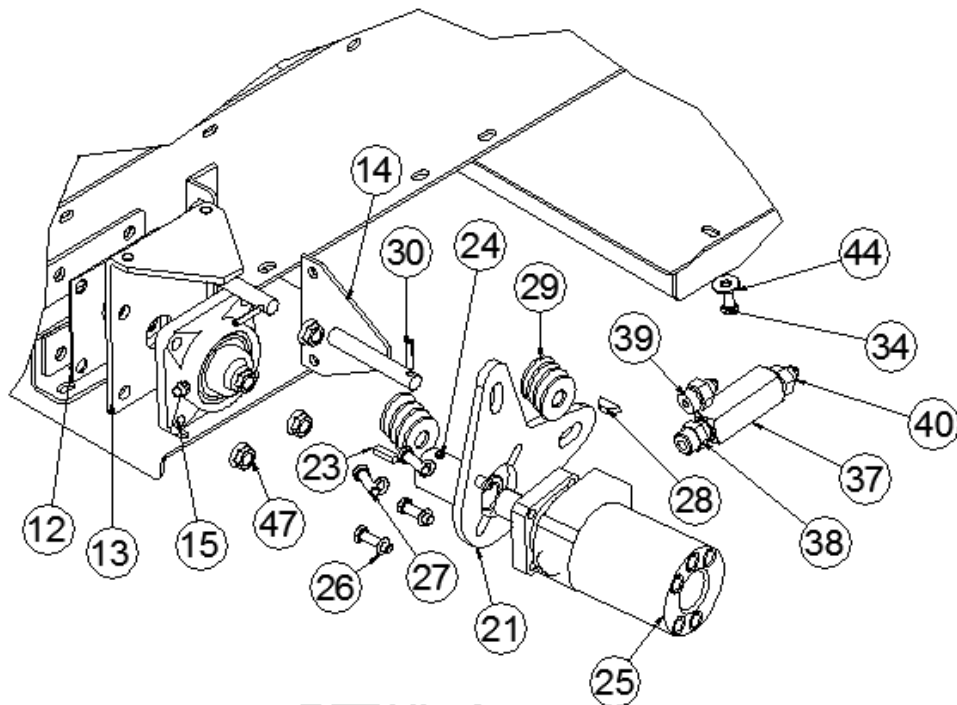
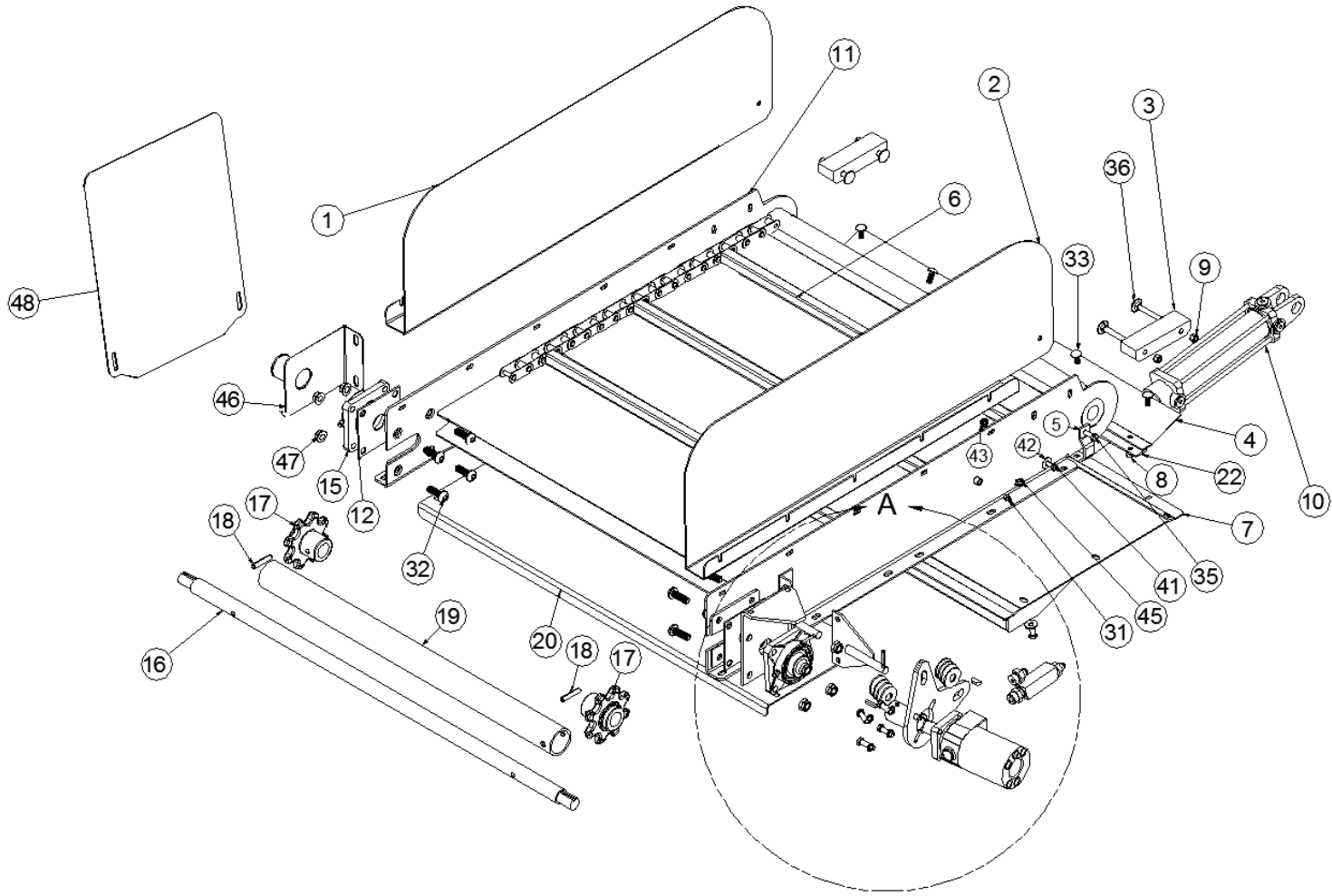


FOLD-UP EXTENSION TO LAY FLAT FOR CONVEYOR, 25" LONG

ITEM	QTY	PART NUMBER	DESCRIPTION
1	1	0-700474	CONVEYOR ASSY, 25 IN LONG FOLD UP
	1	0-700705	CONVEYOR ASSY FOR 81X CHAIN, 25 IN LONG FOLD UP
2	1	0-700598	SWING SHIELD HINGE SPACER, 1/4 * 1 1/4 * 3/4
3	1	0-700470	FOLD UP EXTENSION BOTTOM ASSY FOR CONVEYOR TO LAY FLAT
4	1	0-700736	FOLD UP CONVEYOR SEAL 1/8 UHMW * 6 * 35 1/2
5	1	0-700548	HYD MOTOR MOUNT, BOLT-ON
6	1	0-700404	DRIVE SHAFT SLOT COVER , 12 GA * 4 5/8 * 4 5/8
7	1	0-700403	HYD MOTOR MOUNT
8	1	0-700397	FRONT DISCHARGE CONVEYOR CHAIN, CA557
	20	0-700701	CONVEYOR CHAIN FLIGHT, 1 1/4 * 1 1/4 * 1/4 * 28 1/4
	2	23X81-090A	81X CONVEYOR CHAIN, 90 PITCH INC CL, 22 ATT (2 PER ASSY)
9	2	0-700417	CHAIN BLOCK 1 1/4 UHMW * 1 3/4 * 6
10	18	72FH0-0060	3/8 FLAT WASHER, ZP
11	4	70HC5-0620	3/8-16 * 2 1/2 HHCS, GRD 5, ZP
12	5	71UC2-0060	3/8-16 TOP LOCKNUT, ZP
13	5	70CC5-0508	5/16-18 * 1 CARRIAGE BOLT, GRD 5, ZP
14	5	71UC2-0050	5/16-18 TOP LOCKNUT, ZP
15	2	17400-2210	BRG 4-BOLT CAST, 1 1/4 B, III LIP SEAL, 3 5/8 HOLE CENTER
16	8	70BH5-0812	1/2-13 * 1 1/2 BUTTON HD SOCKET CAP SCREW, ZP, GRD 5
17	8	71WC2-0080	1/2-13 FLANGE LOCKNUT, ZP
18	1	0-700557	SHAFT, FOLD UP EXT DRIVE, 1 1/4 CRR * 43 5/8-CA557 CHAIN
	1	0-700702	SHAFT, FOLD UP EXT DRIVE, 1 1/4 CRR * 43 3/4, 81X CHAIN
19	1	0-130212	KEY, 1/4 CD * 1 1/4
20	1	26000-1000	SHAFT COUPLER, 1 5/8 OD * 1 ID * 3 OAL, 1/4 KW PN #511450
21	1	33BA0-0008	WOODRUFF KEY, AB, AC, AE MOTOR
22	1	33BAM-0000	HYD MOTOR, 18.0 CU IN
	1	33BAG-0000	HYD MOTOR, 11.9 CU IN
23	1	0-700453	CONVEYOR MOTOR MOUNT 3/8 * 8 * 8
24	2	16C10-0810	SPKT CAST, 8T, 1 1/4 B, 3/8 PH
	2	16C30-0610	SPKT 81XB6, 6T, 1 1/4 B, 3/8 PH
25	2	73S00-0616	3/8 * 2 SPIROL PIN, HBK
	2	73S00-0622	3/8 * 2 3/4 SPIROL PIN, HBK
26	2	74040-0000	1/4-28 STRAIGHT GREASE ZERK
27	1	0-700413	SHAFT TUBE COVER 2 SCH 40 PVC PIPE * 32 3/8
28	1	0-700569	FOLD UP CONVEYOR SHAFT SHIELD
29	4	72LH0-0060	3/8 SPLIT LOCK WASHER, ZP
30	4	70HC5-0610	3/8-16 * 1 1/4 HHCS, GRD 5, ZP
31	8	72M10-0014	MACHINE BUSHING, 5/8 ID * 1 1/8 OD * 14 GA, ZP
32	2	73E00-0410	1/4 * 1 1/4 SPRING PIN, ZP
33	1	33HT6400-6-10	9/16-19 ORFS TO 7/8-14 O-RING 37* JIC
34	1	33HT6403-10-8	7/8-14 MALE O-RING TO 3/4-16 MALE O-RING NIPPLE
35	1	33L00-1015	CHECK VAVLE, 3/4 O-RING FEMALE/FEMALE
36	1	33HT6400-6-8	9/16-18 37^ JIC TO 7/8-14 O-RING
37	1	33E00-0206	HYD CYLINDER, 2 * 6 , SAE #8 O/R PORTS
38	10	70HC5-0608	3/8-16 * 1 HHCS, GRD 5, ZP
39	8	71WC2-0060	3/8-16 FLANGE LOCKNUT, ZP
40	1	0-700495-R	FOLD UP EXTENSION FRONT SHIELD RH, 12 GA * 16 * 26 3/8
41	1	0-700495-L	FOLD UP EXTENSION FRONT SHIELD LH, 12 GA * 16 * 26 3/8
42	1	0-700432	CONVEYOR PIVOT SHIELD , 12 GA * 16 * 21
43	1	0-700496	CLAMP FOR HYDRAULIC HOSES 7 GA * 1 * 3 1/2
44	1	70HC5-0508	5/16-18 * 1 HHCS, GRD 5, ZP
45	5	70HC5-0506	5/16-18 * 3/4 HHCS, GRD 5, ZP
46	6	72FH0-0050	5/16 FLAT WASHER, ZP
47	6	71WC2-0050	5/16-18 FLANGE LOCKNUT, ZP

FOLD UP EXTENSION TO LAY FLAT FOR CONVEYOR, 40" LONG

MS-00080



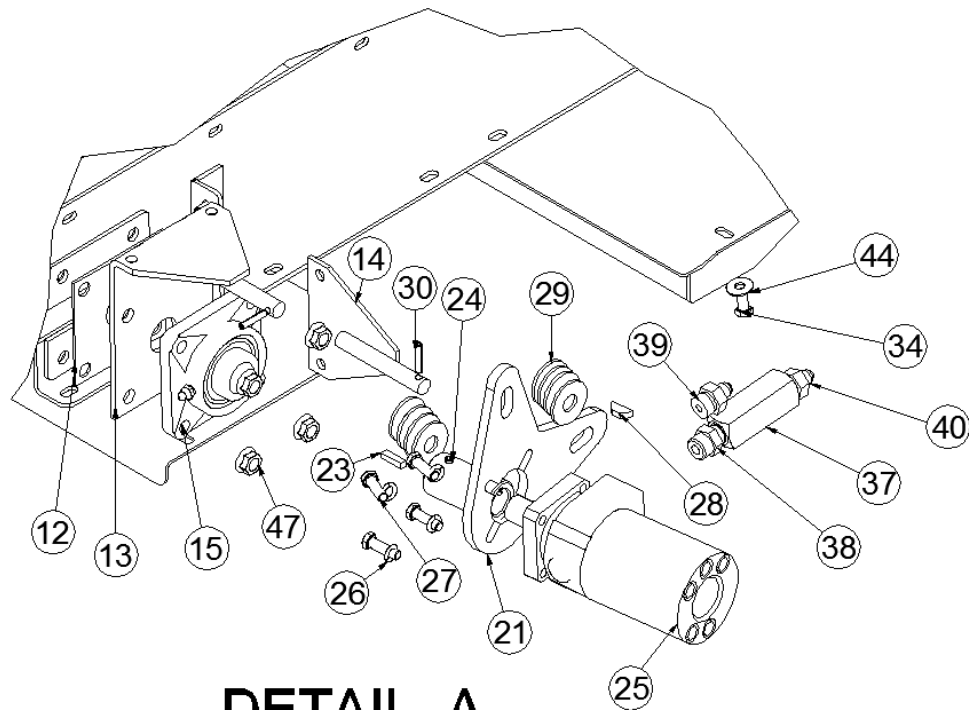
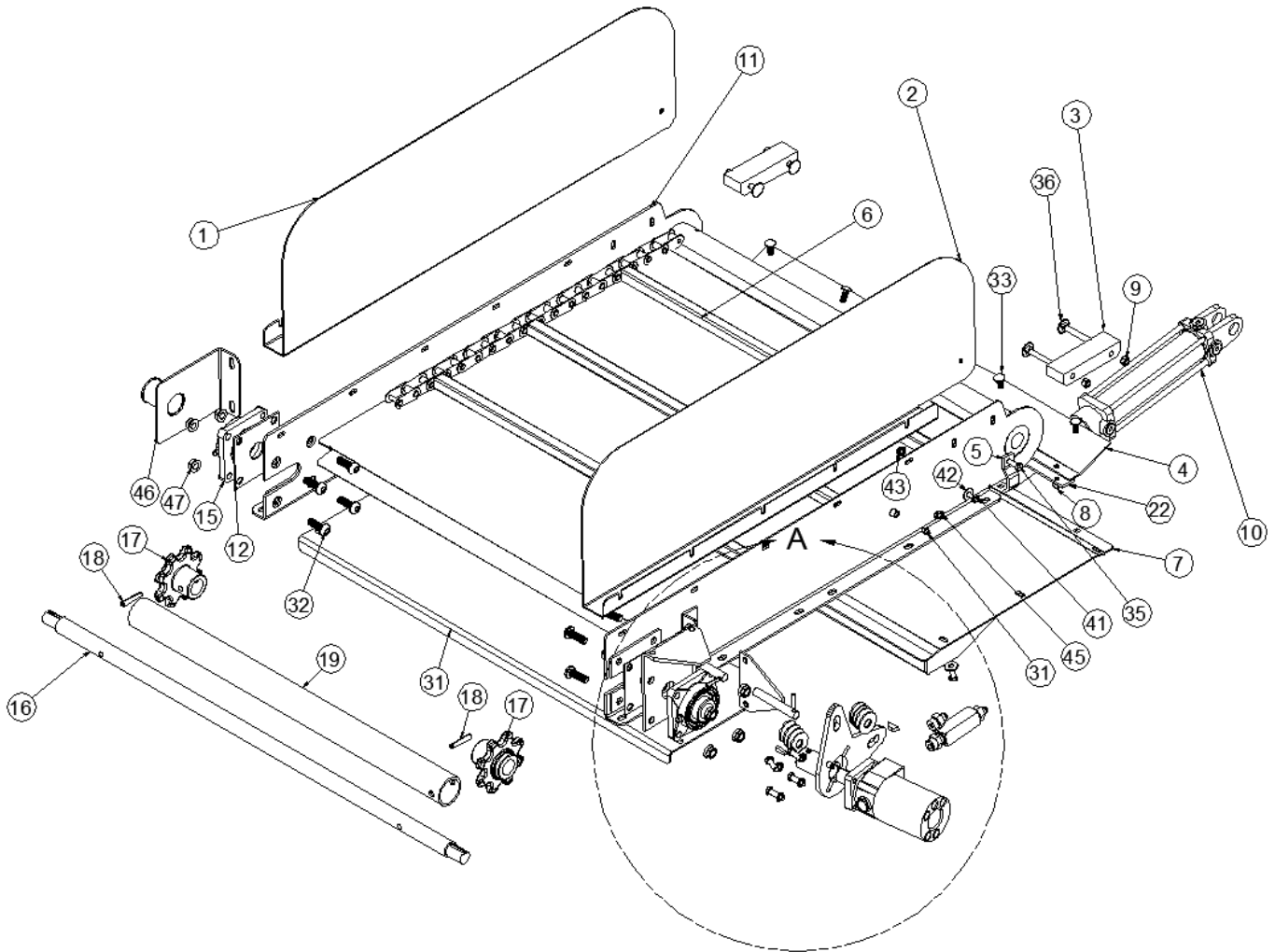
DETAIL A

FOLD UP EXTENSION TO LAY FLAT FOR CONVEYOR, 40" LONG

ITEM	QTY	PART NUMBER	DESCRIPTION
1	1	0-700409-R	FOLD UP EXT. FRONT SHIELD RH, 12 GA * 16 * 41
2	1	0-700409-L	FOLD UP EXT. FRONT SHIELD LH, 12 GA * 16 * 41
3	2	0-700417	CHAIN BLOCK 1 1/4 UHMW * 1 3/4 * 6
4	1	0-700736	FOLD UP CONVEYOR SEAL 1/8 UHMW * 6 * 35 1/2
5	1	0-700496	CLAMP FOR HYDRAULIC HOSES 7 GA * 1 * 3 1/2
6	1	0-700397	FRONT DISCHARGE CONVEYOR CHAIN, CA557
	22	0-700701	CONVEYOR CHAIN FLIGHT, 1 1/4 * 1 1/4 * 1/4 * 28 1/4
7	1	0-700550	FOLD UP EXT BOTTOM ASSY FOR CONVEYOR TO LAY FLAT
8	10	71UC2-0050	5/16-18 TOP LOCKNUT, ZP
9	5	71UC2-0060	3/8-16 TOP LOCKNUT, ZP
10	1	33E00-0208	HYD CYLINDER, 2 * 8, SAE #8 O/R PORTS
11	1	0-700473	CONVEYOR ASSY, 40 IN LONG FOLD UP
	1	0-700698	CONVEYOR ASSY, 40 IN LONG FOLD UP, FOR 81X CHAIN
12	1	0-700404	DRIVE SHAFT SLOT COVER , 12 GA * 4 5/8 * 4 5/8
13	1	0-700403	HYD MOTOR MOUNT
14	1	0-700548	HYD MOTOR MOUNT, BOLT-ON
15	2	17400-2210	BRG 4-BOLT CAST, 1 1/4 B, III LIP SEAL, 3 5/8 HOLE CENTER
16	1	0-700557	SHAFT, FOLD UP EXT DRIVE, 1 1/4 CRR * 43 5/8-CA557 CHAIN
	1	0-700702	SHAFT, FOLD UP EXT DRIVE, 1 1/4 CRR * 43 3/4, 81X CHAIN
17	2	16C10-0810	SPKT CAST, 8T, 1 1/4 B, 3/8 PH
	2	16C30-0610	SPKT 81XB6, 6T, 1 1/4 B, 3/8 PH
18	2	73S00-0616	3/8 * 2 SPIROL PIN, HBK
	2	73S00-0622	3/8 * 2 3/4 SPIROL PIN, HBK
19	1	0-700413	SHAFT TUBE COVER 2 SCH 40 PVC PIPE * 32 3/8
20	1	0-700469	4 FT OUTER CONVEYOR BOTTOM 10 GA * 12 * 38 7/8
	1	0-700680	4 FT OUTER CONVEYOR BOTTOM 10 GA * 17 3/4 * 38 7/8
21	1	0-700453	CONVEYOR MOTOR MOUNT 3/8 * 8 * 8
22	1	0-700598	SWING SHIELD HINGE SPACER, 1/4 * 1 1/4 * 34
23	1	130212	KEY, 1/4 CD * 1 1/4
24	1	26000-1000	SHAFT COUPLER, 1 5/8 OD * 1 ID * 3 OAL, 1/4 KW PN #511450
25	1	33BAG-0000	HYD MOTOR, 11.9 CU IN
	1	33BAM-000	HYD MOTOR, 18.0 CU IN
26	4	72LH0-0060	3/8 SPLIT LOCK WASHER, ZP
27	4	70HC5-0610	3/8-16 * 1 1/4 HHCS, GRD 5, ZP
28	1	33BA0-0008	WOODRUFF KEY, AB, AC, AE MOTOR
29	8	72M10-0014	MACHINE BUSHING, 5/8 ID * 1 1/8 OD * 14 GA, ZP
30	2	73E00-0410	1/4 * 1 1/4 SPRING PIN, ZP
31	2	74040-0000	1/4-28 STRAIGHT GREASE ZERK
32	8	70BH5-0812	1/2-13 * 1 1/2 BUTTON HD SOCKET CAP SCREW, ZP, GRD 5
33	5	70CC5-0508	5/16-18 * 1 CARRIAGE BOLT, GRD 5, ZP
34	10	70HC5-0608	3/8-16 * 1 HHCS, GRD 5, ZP
35	1	70HC5-0608	3/8-16 * 1 HHCS, GRD 5, ZP
36	4	70HC5-0620	3/8-16 * 2 1/2 HHCS, GRD 5, ZP
37	1	33L00-1015	CHECK VALVE, 3/4-O/RING FEMALE/FEMALE
38	1	33HT6403-10-8	7/8-14 MALE O-RING TO 3/4-16 MALE O-RING NIPPLE
39	1	33HT6400-6-10	9/16-18 37^ JIC TO 7/8-14 O-RING
40	6	33HT6400-6-8	9/16-18 ORFS TO 3/4-16 O-RING 37^ JIC
41	10	70HC5-0506	5/16-18 * 3/4 HHCS, GRD 5, ZP
42	1	72FH0-0050	5/16 FLAT WASHER, ZP
43	10	71WC2-0050	5/16-18 FLANGE LOCKNUT, ZP
44	18	72FH0-0060	3/8 FLAT WASHER, ZP
45	10	71WC2-0060	3/8-16 FLANGE LOCKNUT, ZP
46	1	0-700569	FOLD UP CONVEYOR SHAFT SHIELD
47	8	71WC2-0080	1/2-13 FLANGE LOCKNUT, ZP
48	1	0-700432	CONVEYOR PIVOT SHIELD , 12 GA * 16 * 21

FOLD UP EXTENSION TO LAY FLAT FOR CONVEYOR, 50" LONG

[MS-000090](#)



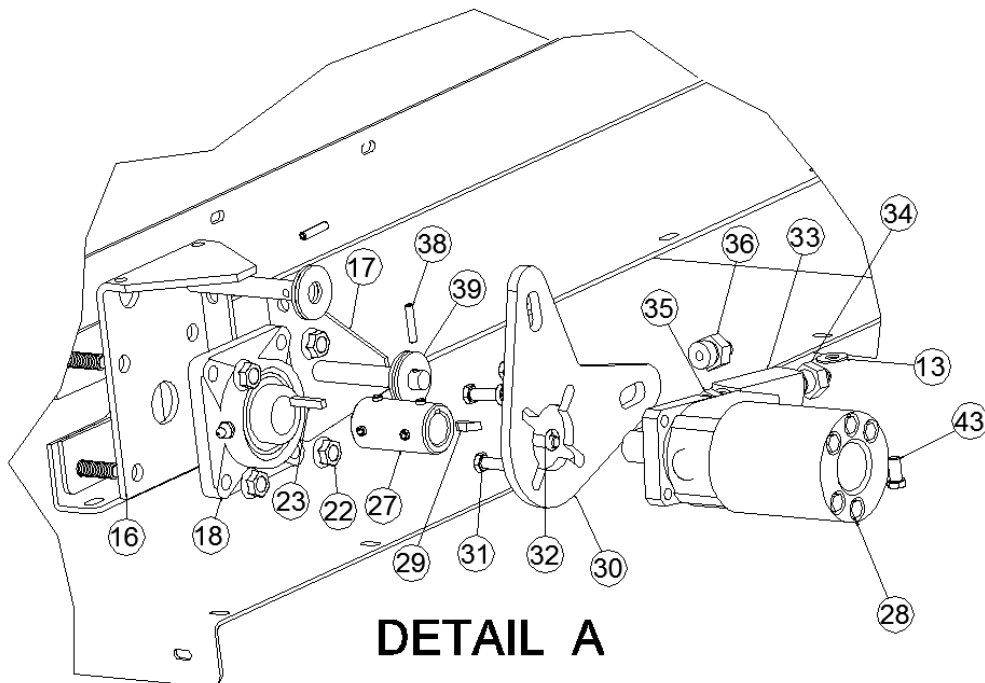
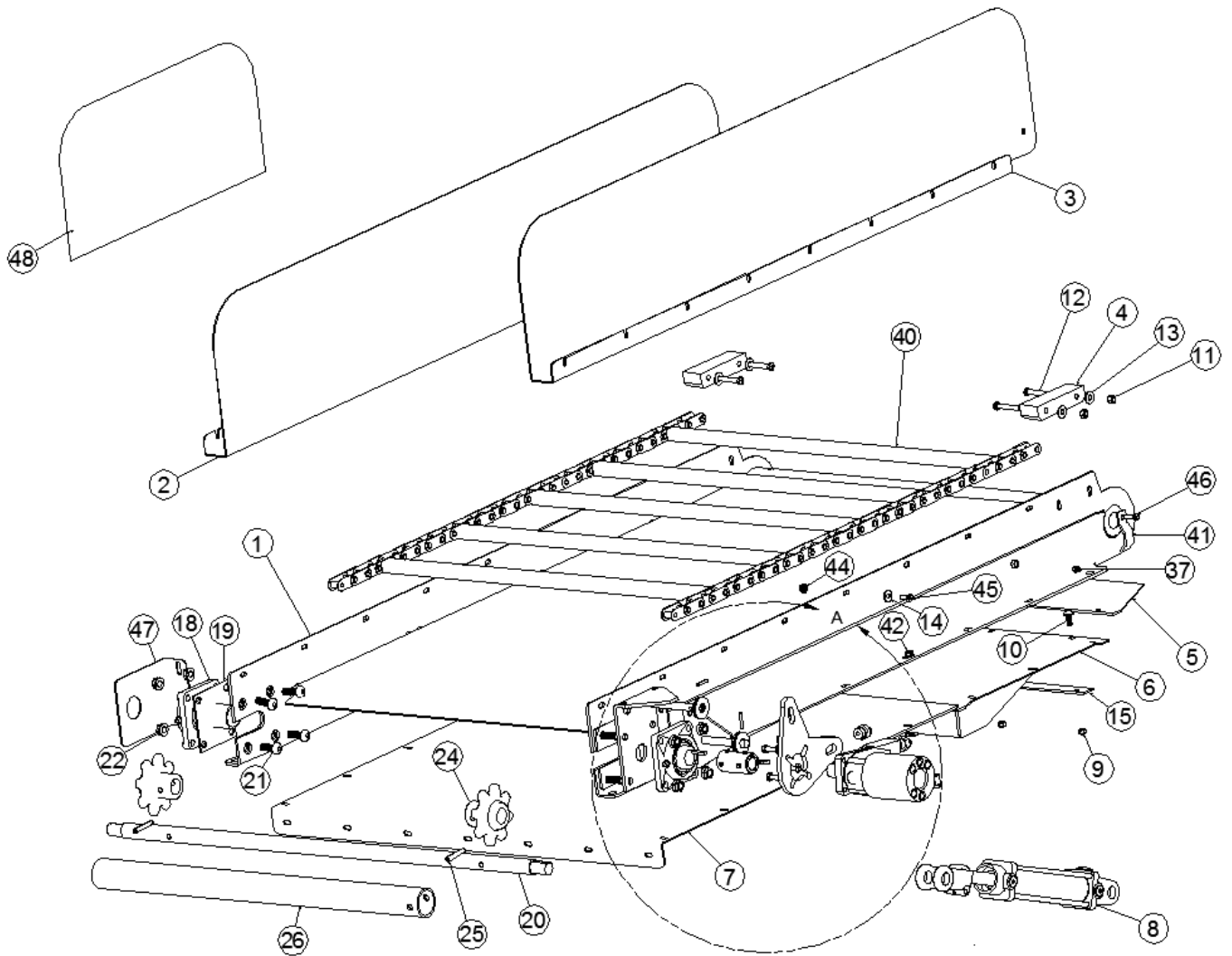
DETAIL A

FOLD UP EXTENSION TO LAY FLAT FOR CONVEYOR, 50" LONG

ITEM	QTY	PART NUMBER	DESCRIPTION
1	1	0-700688-L	FOLD UP EXT. FRONT SHIELD LH, 12 GA * 16 * 51 1/2
2	1	0-700688-R	FOLD UP EXT. FRONT SHIELD LH, 12 GA * 16 * 51 1/2
3	2	0-700417	CHAIN BLOCK 1 1/4 UHMW * 1 3/4 * 6
4	1	0-700736	FOLD UP CONVEYOR SEAL 1/8 UHMW * 6 * 35 1/2
5	2	0-700496	CLAMP FOR HYDRAULIC HOSES 7 GA * 1 * 3 1/2
6	2	23X81-090A	81X CONVEYOR CHAIN, 90 PITCH INC CL, 22 ATT (2 PER ASSY)
	24	0-700701	CONVEYOR CHAIN FLIGHT, 1 1/4 * 1 1/4 * 1/4 * 28 1/4
7	1	0-700550	FOLD UP EXT BOTTOM ASSY FOR CONVEYOR TO LAY FLAT
8	10	71UC2-0050	5/16-18 TOP LOCKNUT, ZP
9	5	71UC2-0060	3/8-16 TOP LOCKNUT, ZP
10	1	33E00-0208	HYD CYLINDER, 2 * 8, SAE #8 O/R PORTS
11	1	0-700739	CONVEYOR ASSY, 50 IN LONG FOLD UP FOR 81X CHAIN
12	2	0-700404	DRIVE SHAFT SLOT COVER , 12 GA * 4 5/8 * 4 5/8
13	1	0-700403	HYD MOTOR MOUNT
14	1	0-700548	HYD MOTOR MOUNT, BOLT-ON
15	2	17400-2210	BRG 4-BOLT CAST, 1 1/4 B, III LIP SEAL, 3 5/8 HOLE CENTER
16	1	0-700702	SHAFT, FOLD UP EXT DRIVE, 1 1/4 CRR * 43 3/4, 81X CHAIN
17	2	16C30-0610	SPKT 81XB6, 6T, 1 1/4 B, 3/8 PH
18	2	73S00-0616	3/8 * 2 SPIROL PIN, HBK
19	1	0-700413	SHAFT TUBE COVER 2 SCH 40 PVC PIPE * 32 3/8
20	1	0-700689	OUTER CONVEYOR BOTTOM 10 GA * 28 1/4 * 38 7/8
21	1	0-700453	CONVEYOR MOTOR MOUNT 3/8 * 8 * 8
22	1	0-700598	SWING SHIELD HINGE SPACER, 1/4 * 1 1/4 * 34
23	1	0-130212	KEY, 1/4 CD * 1 1/4
24	1	26000-1000	SHAFT COUPLER, 1 5/8 OD * 1 ID * 3 OAL, 1/4 KW PN #511450
25	1	33BAM-0000	HYD MOTOR, 18.0 CU IN
26	4	72LH0-0060	3/8 SPLIT LOCK WASHER, ZP
27	4	70HC5-0610	3/8-16 * 1 1/4 HHCS, GRD 5, ZP
28	1	KEY	WOODRUFF KEY
29	8	72M10-0014	MACHINE BUSHING, 5/8 ID * 1 1/8 OD * 14 GA, ZP
30	2	73E00-0410	1/4 * 1 1/4 SPRING PIN, ZP
31	2	74040-0000	1/4-28 STRAIGHT GREASE ZERK
32	8	70BH5-0812	1/2-13 * 1 1/2 BUTTON HD SOCKET CAP SCREW, ZP, GRD 5
33	5	70CC5-0508	5/16-18 * 1 CARRIAGE BOLT, GRD 5, ZP
34	10	70HC5-0606	3/8-16 * 3/4 HHCS, GRD 5, ZP
35	1	70HC5-0608	3/8-16 * 1 HHCS, GRD 5, ZP
36	4	70HC5-0620	3/8-16 * 2 1/2 HHCS, GRD 5, ZP
37	1	33L00-1015	CHECK VALVE, 3/4-O/RING FEMALE/FEMALE
38	1	33HT6403-10-8	7/8-14 MALE O-RING TO 3/4-16 MALE O-RING NIPPLE
39	1	33HT6400-6-10	9/16-18 37^ JIC TO 7/8-14 O-RING
40	6	33HT6400-6-8	9/16-18 ORFS TO 3/4-16 O-RING 37^ JIC
41	10	70HC5-0506	5/16-18 * 3/4 HHCS, GRD 5, ZP
42	10	72FH0-0050	5/16 FLAT WASHER, ZP
43	10	71WC2-0050	5/16-18 FLANGE LOCKNUT, ZP
44	18	72FH0-0060	3/8 FLAT WASHER, ZP
45	10	71WC2-0060	3/8-16 FLANGE LOCKNUT, ZP
46	1	0-700569	FOLD UP CONVEYOR SHAFT SHIELD
47	8	71WC2-0080	1/2-13 FLANGE LOCKNUT, ZP
48	1	0-700432	CONVEYOR PIVOT SHIELD , 12 GA * 16 * 21

FOLD UP EXTENSION TO LAY FLAT FOR CONVEYOR, 65" LONG

[MS-000100](#)

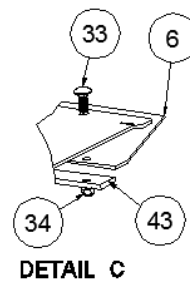
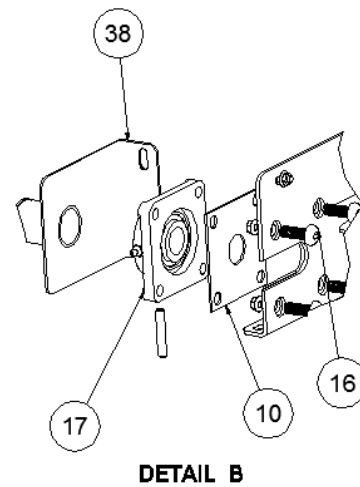
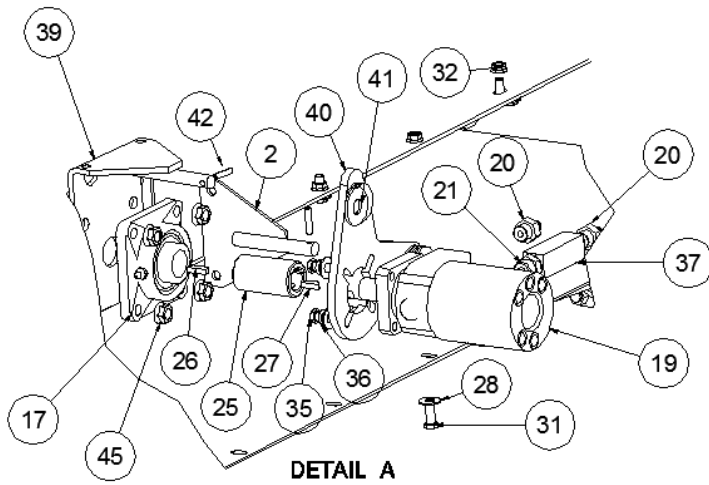
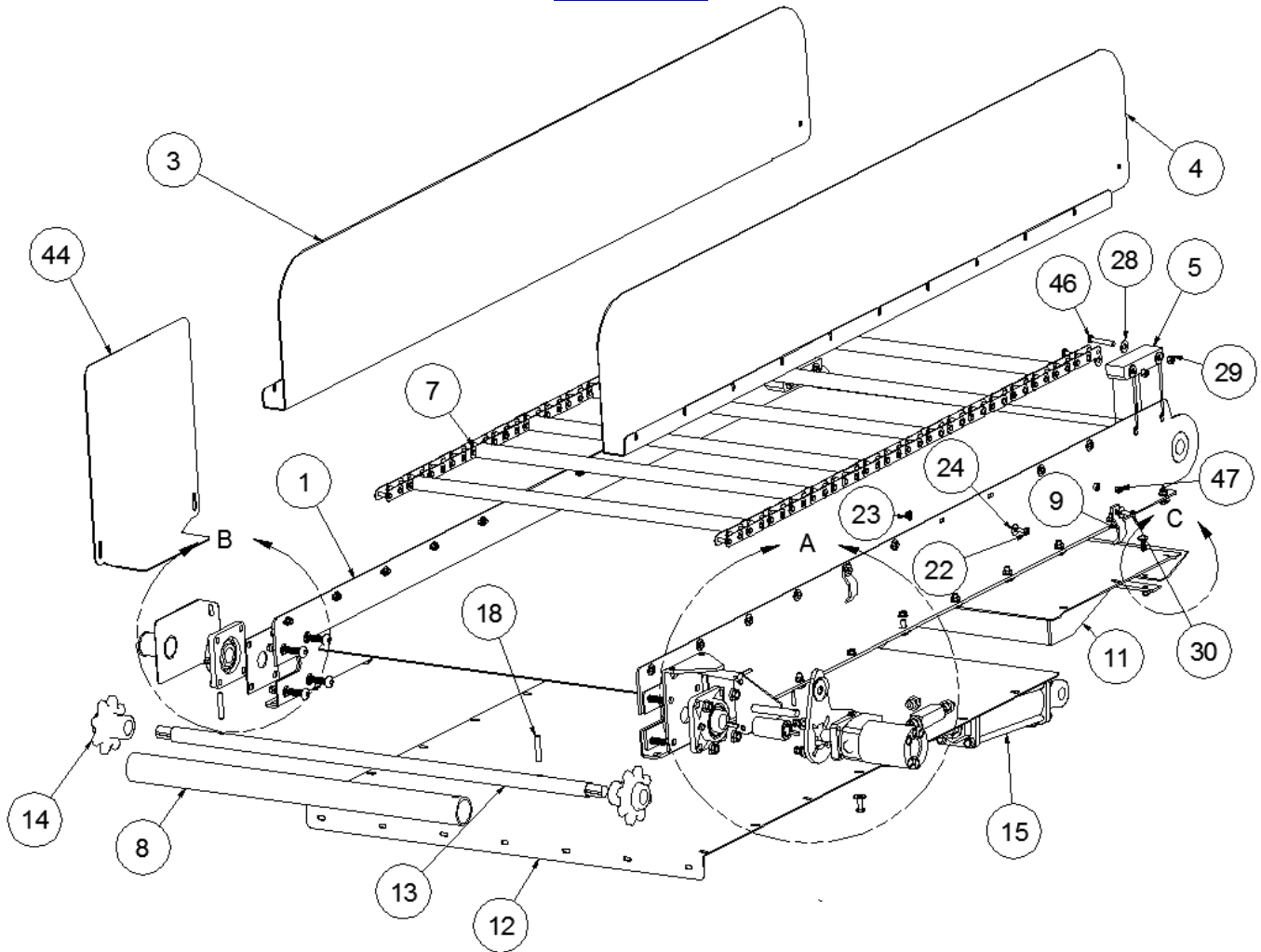


FOLD UP EXTENSION TO LAY FLAT FOR CONVEYOR, 65" LONG

ITEM	QTY	PART NUMBER	DESCRIPTION
1	1	0-700497	CONVEYOR ASSY, 65 IN FOLD UP
	1	0-700731	CONVEYOR ASSY, 65 IN FOLD UP, 81X CHAIN
2	1	0-700499-R	FOLD UP EXT. FRONT SHIELD LH, 12 GA * 16 * 66
3	1	0-700499-L	FOLD UP EXT. FRONT SHIELD LH, 12 GA * 16 * 66
4	2	0-700417	CHAIN BLOCK 1 1/4 UHMW * 1 3/4 * 6
5	1	0-700736	FOLD UP CONVEYOR SEAL 1/8 UHMW * 6 * 35 1/2
6	1	0-700550	FOLD UP EXT BOTTOM ASSY FOR CONVEYOR TO LAY FLAT
	1	0-700732	FOLD UP EXT BOTTOM ASSY FOR CONVEYOR
7	1	0-700552	5 FT OUTER CONVEYOR BOTTOM 10 GA * 38 7/8 * 42 3/4
8	1	33E00-0212	HYD CYLINDER, 2 * 12, SAE #8 O/R PORTS
9	5	71UC2-0050	5/16-18 TOP LOCKNUT, ZP
10	5	70CC5-0508	5/16-18 * 1 CARRIAGE BOLT, GRD 5, ZP
11	4	71UC2-0060	3/8-16 TOP LOCKNUT, ZP
12	4	70HC5-0618	3/8-16 * 2 1/4 HHCS, GRD 5, ZP
13	20	72FH0-0060	3/8 FLAT WASHER, ZP
14	20	72FH0-0050	5/16 FLAT WASHER, ZP
15	1	0-700598	SWING SHIELD HINGE SPACER, 1/4 * 1 1/4 * 34
16	1	0-700403	HYD MOTOR MOUNT
17	1	0-700548	HYD MOTOR MOUNT, BOLT-ON
18	2	17400-2210	BRG 4-BOLT CAST, 1 1/4 B, III LIP SEAL, 3 5/8 HOLE CENTER
19	1	0-700404	DRIVE SHAFT SLOT COVER , 12 GA * 4 5/8 * 4 5/8
20	1	0-700557	SHAFT, FOLD UP EXT DRIVE, 1 1/4 CRR * 43 5/8-CA557 CHAIN
	1	0-700702	SHAFT, FOLD UP EXT DRIVE, 1 1/4 CRR * 43 3/4, 81X CHAIN
21	8	70BH5-0812	1/2-13 * 1 1/2 BUTTON HD SOCKET CAP SCREW, ZP, GRD 5
22	8	71WC2-0080	1/2-13 FLANGE LOCKNUT, ZP
23	1	0-130212	KEY, 1/4 CD * 1 1/4
24	2	16C10-0810	SPKT CAST, 8T, 1 1/4 B, 3/8 PH
	2	16C30-0610	SPKT 81XB6, 6T, 1 1/4 B, 3/8 PH
25	2	73S00-0618	3/8 * 2 1/4 SPIROL PIN, HBK
26	1	0-700413	SHAFT TUBE COVER 2 SCH 40 PVC PIPE * 32 3/8
27	1	26000-1000	SHAFT COUPLER, 1 5/8 OD * 1 ID * 3 OAL, 1/4 KW PN #511450
28	1	33BAG-0000	HYD MOTOR, 11.9 CU IN
29	1	KEY	WOODRUFF KEY
30	1	0-700453	CONVEYOR MOTOR MOUNT 3/8 * 8 * 8
31	4	70HC5-0610	3/8-16 * 1 1/4 HHCS, GRD 5, ZP
32	4	72LH0-0060	3/8 SPLIT LOCK WASHER, ZP
33	1	33L00-1015	CHECK VALVE, 3/4-O/RING FEMALE/FEMALE
34	1	33HT6400-6-8	9/16-18 ORFS TO 3/4-16 O-RING 37^ JIC
35	1	33HT6403-10-8	7/8-14 MALE O-RING TO 3/4-16 MALE O-RING NIPPLE
36	1	33HT6400-6-10	9/16-18 37^ JIC TO 7/8-14 O-RING
37	2	74040-0000	1/4-28 STRAIGHT GREASE ZERK
38	2	73E00-0410	1/4 * 1 1/4 SPRING PIN, ZP
39	8	72M10-0014	MACHINE BUSHING, 5/8 ID * 1 1/8 OD * 14 GA, ZP
40	1	0-700397	FRONT DISCHARGE CONVEYOR CHAIN, CA557
	1	23X81-090A	81X CONVEYOR CHAIN, 90 PITCH INC CL, 22 ATT (2 PER ASSY)
41	1	0-700496	CLAMP FOR HYDRAULIC HOSES 7 GA * 1 * 3 1/2
42	18	71WC2-0060	3/8-16 FLANGE LOCKNUT, ZP
43	16	70HC5-0606	3/8-16 * 3/4 HHCS, GRD 5, ZP
44	20	71WC2-0050	5/16-18 FLANGE LOCKNUT, ZP
45	19	70HC5-0506	5/16-18 * 3/4 HHCS, GRD 5, ZP
46	1	70HC5-0508	5/16-18 * 1 HHCS, GRD 5, ZP
47	1	0-700569	FOLD UP CONVEYOR SHAFT SHIELD
48	1	0-700432	CONVEYOR PIVOT SHIELD , 12 GA * 16 * 21

FOLD UP EXTENSION TO LAY FLAT FOR CONVEYOR, 80" LONG

[MS-000110](#)

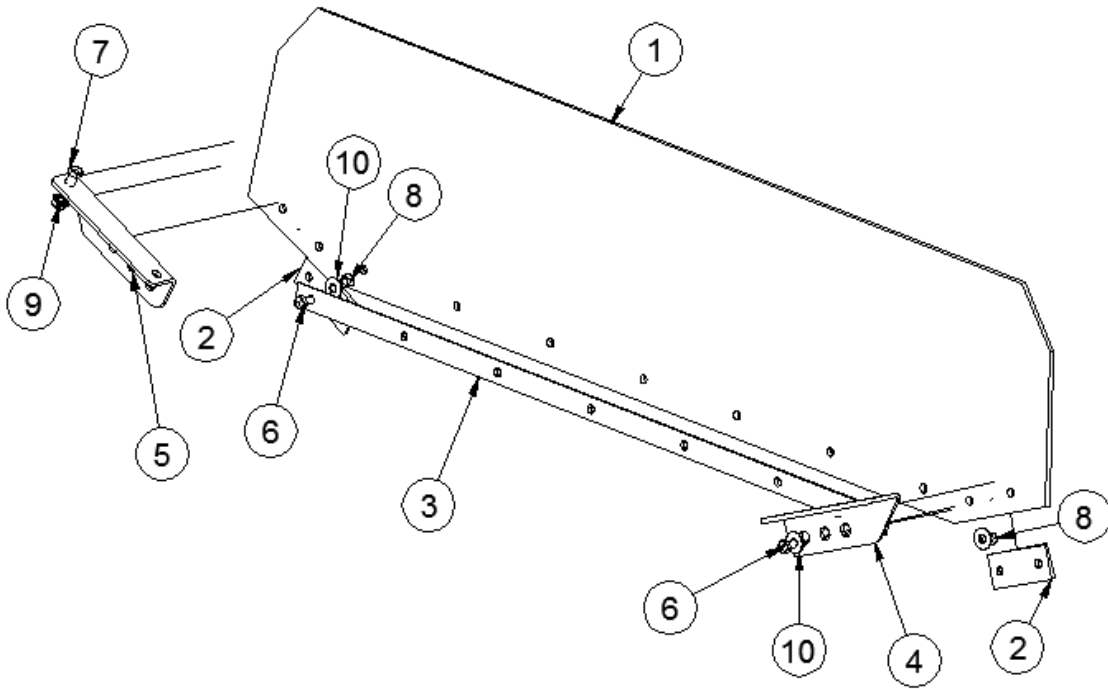


FOLD UP EXTENSION TO LAY FLAT FOR CONVEYOR, 80" LONG

ITEM	QTY	PART NUMBER	DESCRIPTION
1	1	0-700448	CONVEYOR ASSY, 80 IN FOLD UP
2	1	0-700548	HYD MOTOR MOUNT, BOLT-ON
3	1	0-700446-L	FOLD UP EXT. FRONT SHIELD LH, 12 GA * 16 * 81
4	1	0-700446-R	FOLD UP EXT. FRONT SHIELD RH, 12 GA * 16 * 81
5	2	0-700417	CHAIN BLOCK 1 1/4 UHMW * 1 3/4 * 6
6	1	0-700736	FOLD UP CONVEYOR SEAL 1/8 UHMW * 6 * 35 1/2
7	1	0-700397	FRONT DISCHARGE CONVEYOR CHAIN, CA557
8	1	0-700413	SHAFT TUBE COVER 2 SCH 40 PVC PIPE * 32 3/8
9	2	0-700496	CLAMP FOR HYDRAULIC HOSES 7 GA * 1 * 3 1/2
10	1	0-700404	DRIVE SHAFT SLOT COVER , 12 GA * 4 5/8 * 4 5/8
11	1	0-700550	FOLD UP EXT BOTTOM ASSY FOR CONVEYOR TO LAY FLAT
12	1	0-700553	6 FT OUTER CONVEYOR BOTTOM 10 GA * 38 7/8 * 57
13	1	0-700557	SHAFT, FOLD UP EXT DRIVE, 1 1/4 CRR * 43 5/8-CA557 CHAIN
14	2	16C10-0810	SPKT CAST, 8T, 1 1/4 B, 3/8 PH
15	1	33E00-0308	HYD CYLINDER, 3 * 8, 1/2-NPT PORTS
16	8	70BH5-0812	1/2-13 * 1 1/2 BUTTON HD SOCKET CAP SCREW, ZP, GRD 5
17	2	17400-2210	BRG 4-BOLT CAST, 1 1/4 B, III LIP SEAL, 3 5/8 HOLE CENTER
18	2	73S00-0618	3/8 * 2 1/4 SPIROL PIN, HBK
19	1	33BAM-0000	HYD MOTOR, 18.0 CU IN
20	2	33HT6400-6-8	9/16-18 ORFS TO 3/4-16 O-RING 37^ JIC
21	1	33HT6403-10-8	7/8-14 MALE O-RING TO 3/4-16 MALE O-RING NIPPLE
22	18	70HC5-0506	5/16-18 * 3/4 HHCS, GRD 5, ZP
23	20	71WC2-0050	5/16-18 FLANGE LOCKNUT, ZP
24	20	72FH0-0050	5/16 FLAT WASHER, ZP
25	1	26000-1000	SHAFT COUPLER, 1 5/8 OD * 1 ID * 3 OAL, 1/4 KW PN #511450
26	1	0-130200	KEY, 1/4 CD * 15/16
27	1	KEY	WOODRUFF KEY
28	32	72FH0-0060	3/8 FLAT WASHER, ZP
29	4	71UC2-0060	3/8-16 TOP LOCKNUT, ZP
30	2	70HC5-0508	5/16-18 * 1 HHCS, GRD 5, ZP
31	20	70HC5-0608	3/8-16 * 1 HHCS, GRD 5, ZP
32	20	71WC2-0060	3/8-16 FLANGE LOCKNUT, ZP
33	5	70CC5-0508	5/16-18 * 1 CARRIAGE BOLT, GRD 5, ZP
34	5	71UC2-0050	5/16-18 TOP LOCKNUT, ZP
35	4	70HC5-0610	3/8-16 * 1 1/4 HHCS, GRD 5, ZP
36	4	72LH0-0060	3/8 SPLIT LOCK WASHER, ZP
37	1	33L00-1015	CHECK VALVE, 3/4-O/RING FEMALE/FEMALE
38	1	0-700569	FOLD UP CONVEYOR SHAFT SHIELD
39	1	0-700403	HYD MOTOR MOUNT
40	1	0-700453	CONVEYOR MOTOR MOUNT 3/8 * 8 * 8
41	8	72M10-0014	MACHINE BUSHING, 5/8 ID * 1 1/8 OD * 14 GA, ZP
42	2	73E00-0410	1/4 * 1 1/4 SPRING PIN, ZP
43	1	0-700598	SWING SHIELD HINGE SPACER, 1/4 * 1 1/4 * 34
44	1	0-700432	CONVEYOR PIVOT SHIELD , 12 GA * 16 * 21
45	8	71WC2-0080	1/2-13 FLANGE LOCKNUT, ZP
46	4	70HC5-0618	3/8-16 * 2 1/4 HHCS, GRD 5, ZP
47	2	74040-0000	1/4-28 STRAIGHT GREASE ZERK

FRONT DISCHARGE CONVEYOR RUBBER SPOUT

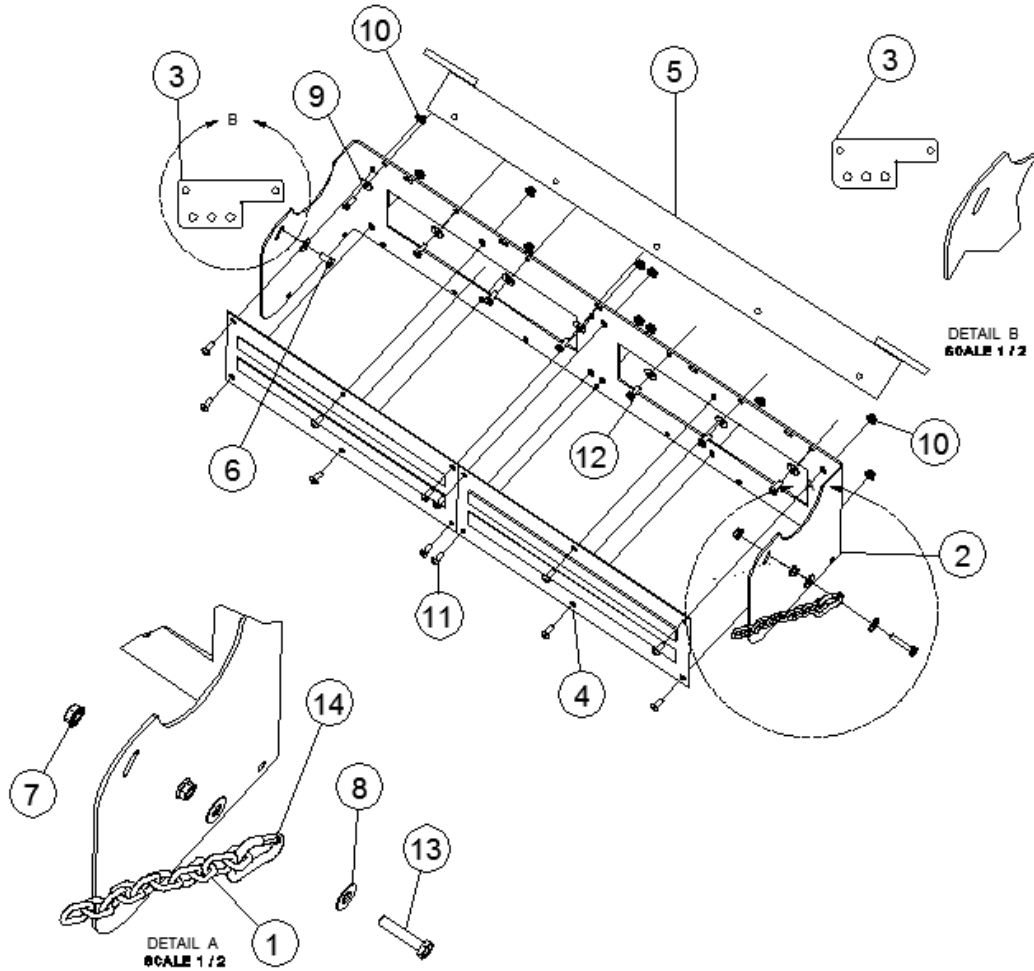
MS-000120



ITEM	QTY	PART NUMBER	DESCRIPTION
1	1	42000-1247	VM CONVEYOR RUBBER SPOUT 1/4 * 11 1/2 * 47
2	2	0-700436	FRONT PANEL BRACE 7 GA * 1 1/2 * 3 1/2
3	1	0-700681	CONVEYOR STRAP FOR RUBBER SPOUT 7 GA * 1 * 34 3/4
4	1	0-700468-L	MAGNET HINGE BRACKET 7 GA * 3 1/4 * 7
5	1	0-700468-R	MAGNET HINGE BRACKET 7 GA * 3 1/4 * 7
6	11	70HC5-0508	5/16-18 * 1 HHCS, GRD 5, ZP
7	4	70HC5-0606	3/8-16 * 3/4 HHCS, GRD 5, ZP
8	11	71UC2-0050	5/16-18 TOP LOCKNUT, ZP
9	4	71WC2-0060	3/8-16 FLANGE LOCKNUT, ZP
10	15	72FH0-0050	5/16 FLAT WASHER, ZP

MAGNET SPOUT ASSEMBLY

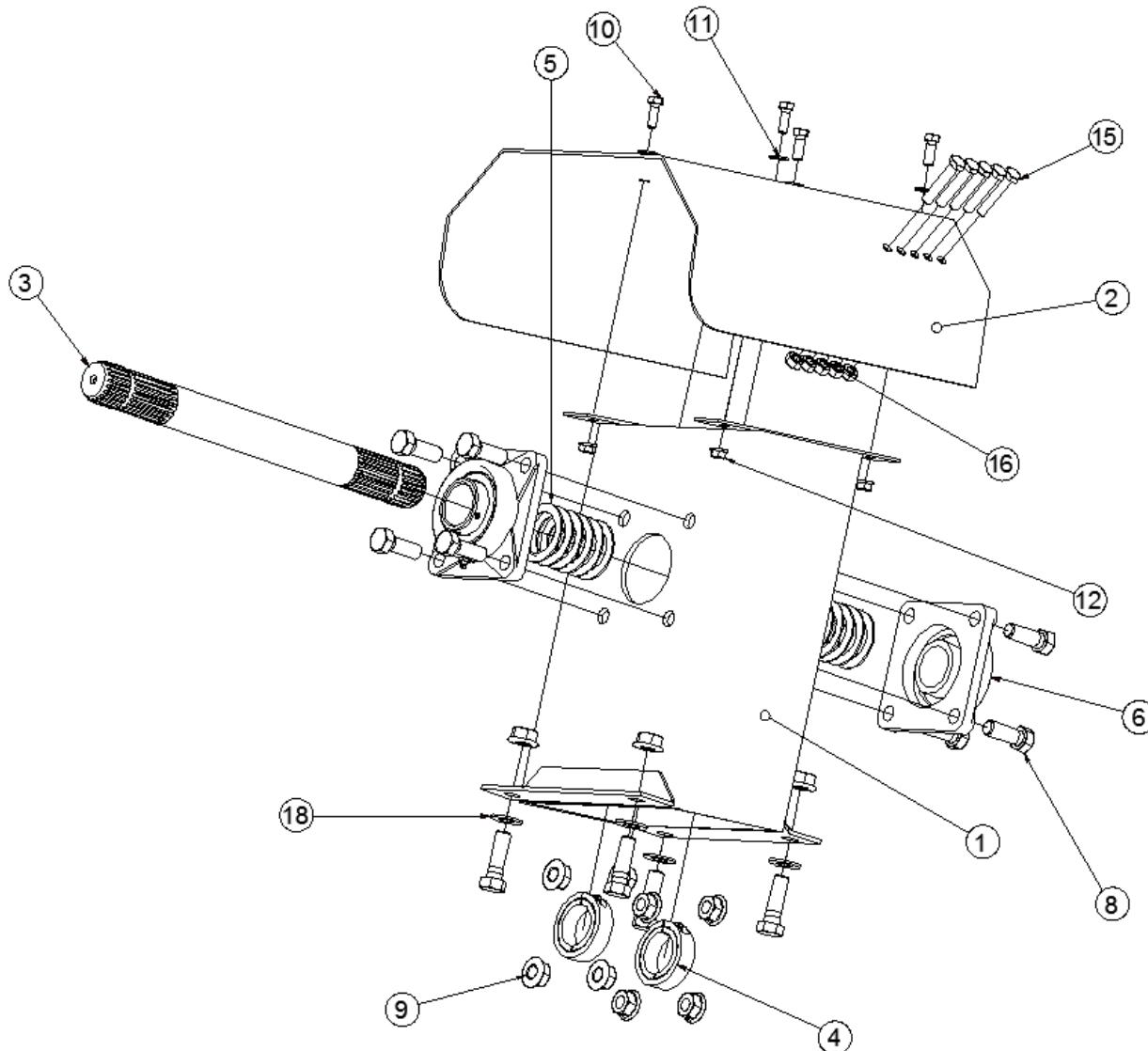
MS-000130



ITEM	QTY	PART NUMBER	DESCRIPTION
1	2	34P04-0000	3/16 PROOF COIL CHAIN GRD 28
2	1	0-700424	DUAL DISCHARGE MAGNET MOUNT 10 GA * 11 * 61
3	1	0-700468-L	MAGNET HINGE BRACKET 7 GA * 3 1/4 * 7
	1	0-700468-R	MAGNET HINGE BRACKET 7 GA * 3 1/4 * 7
4	2	45000-0820	MAGNET, 8 1/2 * 19 1/2, STAINLESS
5	1	0-700472	DISCHARGE ADJUSTABLE MAGNET MOUNT ASSY. TYPE HINGE
6	2	70HC5-0506	5/16-18 * 3/4 HHCS, GRD 5, ZP
7	3	71WC2-0060	3/8-16 FLANGE LOCKNUT, ZP
8	4	72FH0-0060	3/8 FLAT WASHER, ZP
9	7	72FH0-0050	5/16 FLAT WASHER, ZP
10	20	71WC2-0050	5/16-18 FLANGE LOCKNUT, ZP
11	12	70BH5-0506	5/16-18 * 3/4 BUTTON HD SOCKET CAP SCREW, ZP, GRD 5
12	7	70HC5-0506	5/16-18 * 3/4 HHCS, GRD 5, ZP
13	2	70HC5-0614	3/8-16 * 1 3/4 HHCS, GRD 5, ZP
14	2	34SS4-0000	SPRING SNAP LOCK, ZP, 5/16 * 3 1/8

TRANSFER BOX

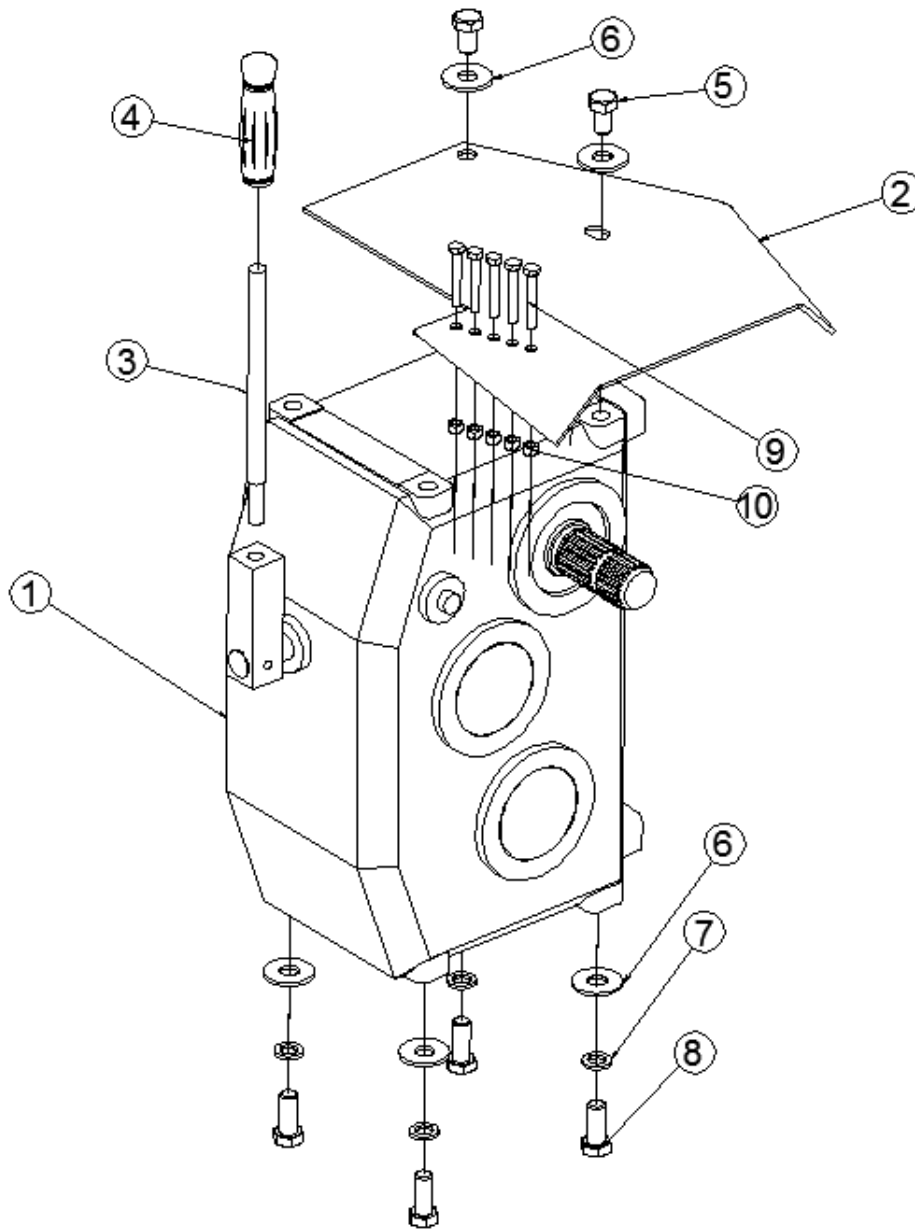
MS-000140



ITEM	QTY	PART NUMBER	DESCRIPTION
1	1	0-700392	SINGLE SPEED ANGLED TRANSFER BOX
2	1	0-700614	TRANSFER BOX PTO COVER 10 GA * 18 * 26
3	1	26SCH-0218	SPLINED CARRIER SHAFT, 1 3/4-20 SPLINED BOTH ENDS * 18
4	2	28010-0014	LOCK COLLAR, 1 3/4 BORE, SINGLE SPLIT
5	12	72M28-0014	MACHINE BUSHING, 1 3/4 ID * 2 1/2 OD * 14 GA, ZP
6	2	17400-2214	BRG 4-BOLT CAST, 1 3/4 B, III LIP SEAL, 4 1/8 HOLE CENTER
8	12	70HC5-1014	5/8-11 * 1 3/4 HHCS, GRD 5, ZP
9	12	71WC2-0100	5/8-11 FLANGE LOCKNUT, ZP
10	4	70HC5-0608	3/8-16 * 1 HHCS, GRD 5, ZP
11	4	72FH0-0060	3/8 FLAT WASHER, ZP
12	4	71WC2-0060	3/8-16 FLANGE LOCKNUT, ZP
15	5	70HM8-0817	M8-1.25 * 55 HHCS CLASS 8.8, 725-875
	5	70HM8-1055	M10-1.5 * 55 HHCS, CLASS 8.8, BLACK, 1050
16	5	71UM8-0100	M10-1.50 TOP LOCK NUT, ZP, 1050
	5	71UM8-0800	M8-1.25 TOP LOCK NUT GRD 8.8, ZP, 725-875
18	4	72FH0-0100	5/8 FLAT WASHER, ZP

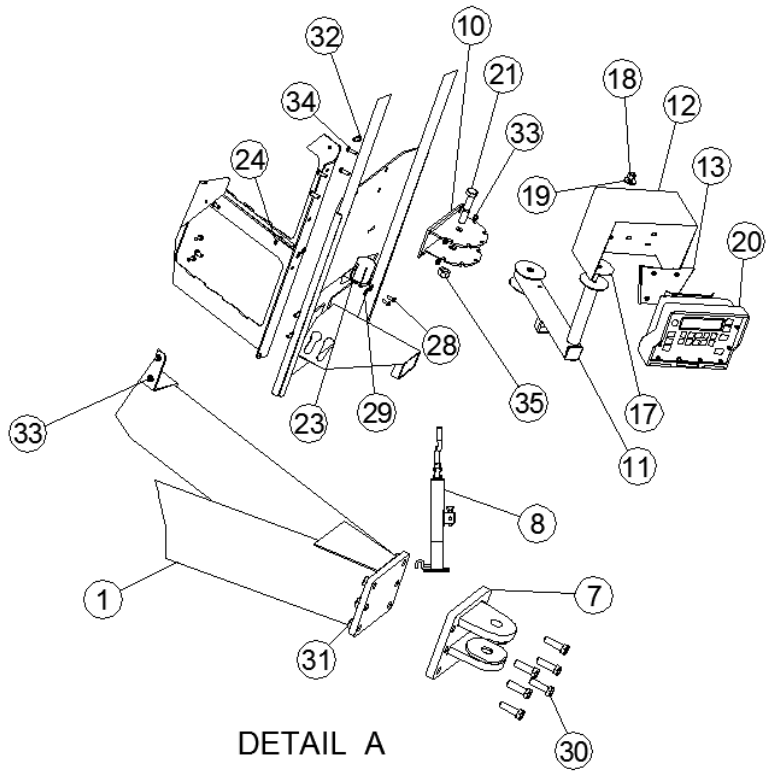
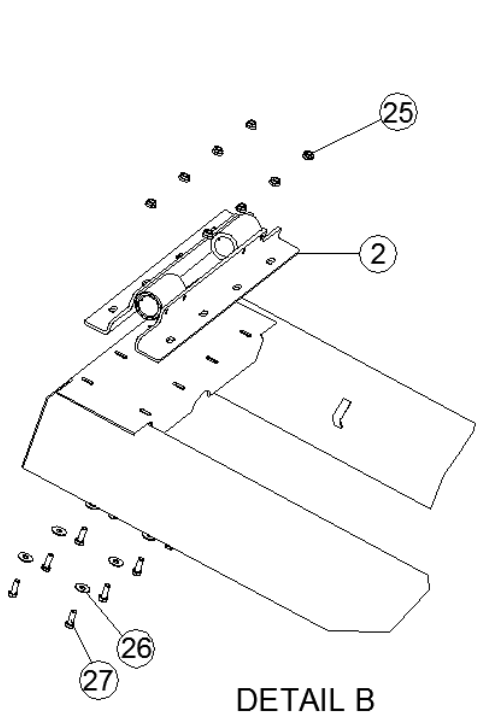
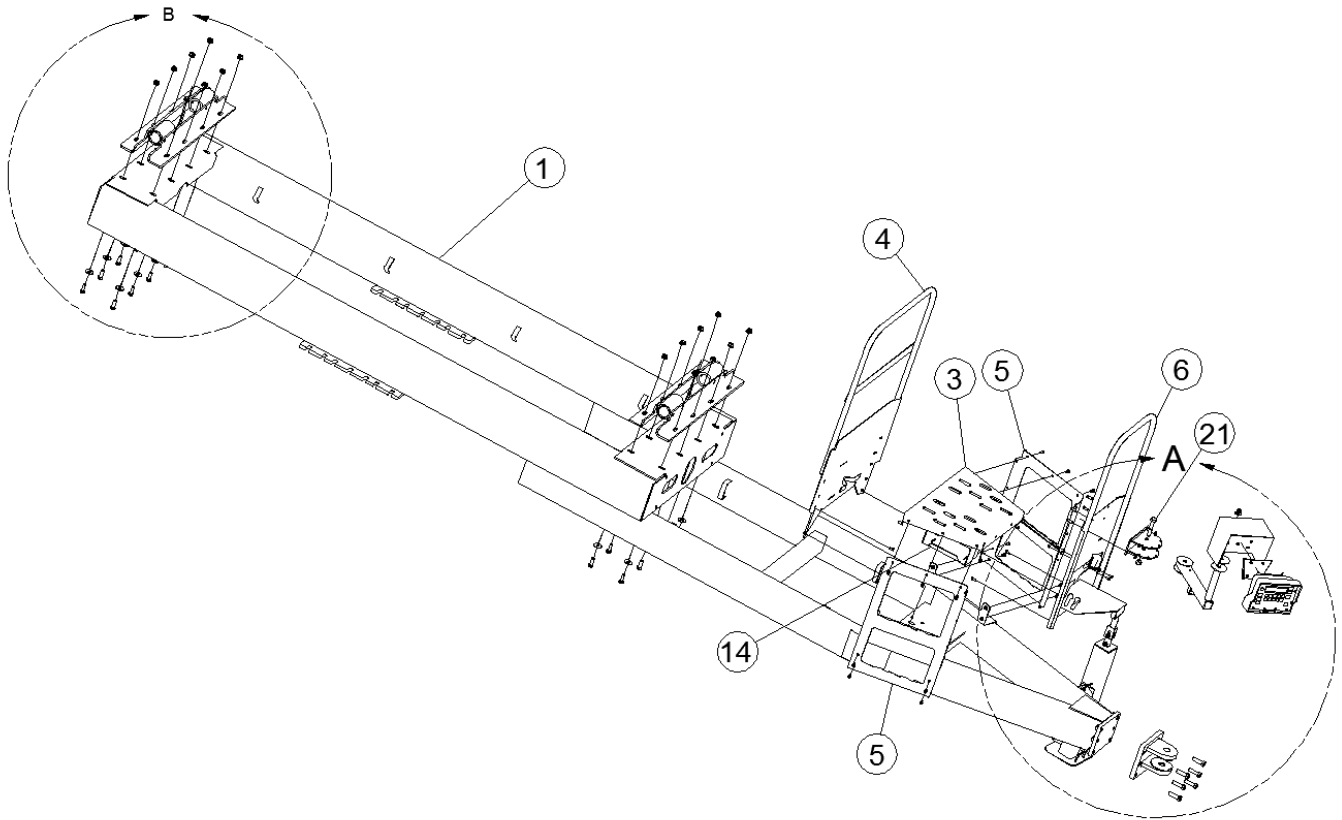
2-SPEED GEARBOX

MS-000150



ITEM	QTY	PART NUMBER	DESCRIPTION
1	1	26S24-5367	GEARBOX 2-SPEED, 1:5 TO 1:1 WITH 1 3/4-20 INPUT AND OUTPUT
2	1	0-700001	FRONT PTO SHIELD 10 GA * 14 * 16
3	1	0-700280	SHIFT LEVER TWO SPEED GEARBOX 5/8 CCR * 10
4	1	41P00-0540	PLASTIC GRIP, 5/8 ID * 5
5	2	70HM8-1625	M16-2.0 * 25 HHCS, CLASS 8.8
6	6	72FH0-0100	5/8 FLAT WASHER, ZP
7	4	72LH0-0100	5/8 SPLIT LOCK WASHER, ZP
8	4	70HM8-1645	M16-2.0 * 45 HHCS, CLASS 8.8, ZP
9	5	70HM8-1055	M10-1.5 * 55 HHCS, CLASS 8.8, BLACK, 1050
	5	70HM8-0817	M8-1.25 * 55 HHCS CLASS 8.8
10	5	71UM8-0100	M10-1.50 TOP LOCK NUT, ZP, 1050
	5	71UM8-0800	M8-1.25 TOP LOCK NUT GRD 8.8, ZP

MS725 - MS875 - MS1050 FRAME
MS-000160

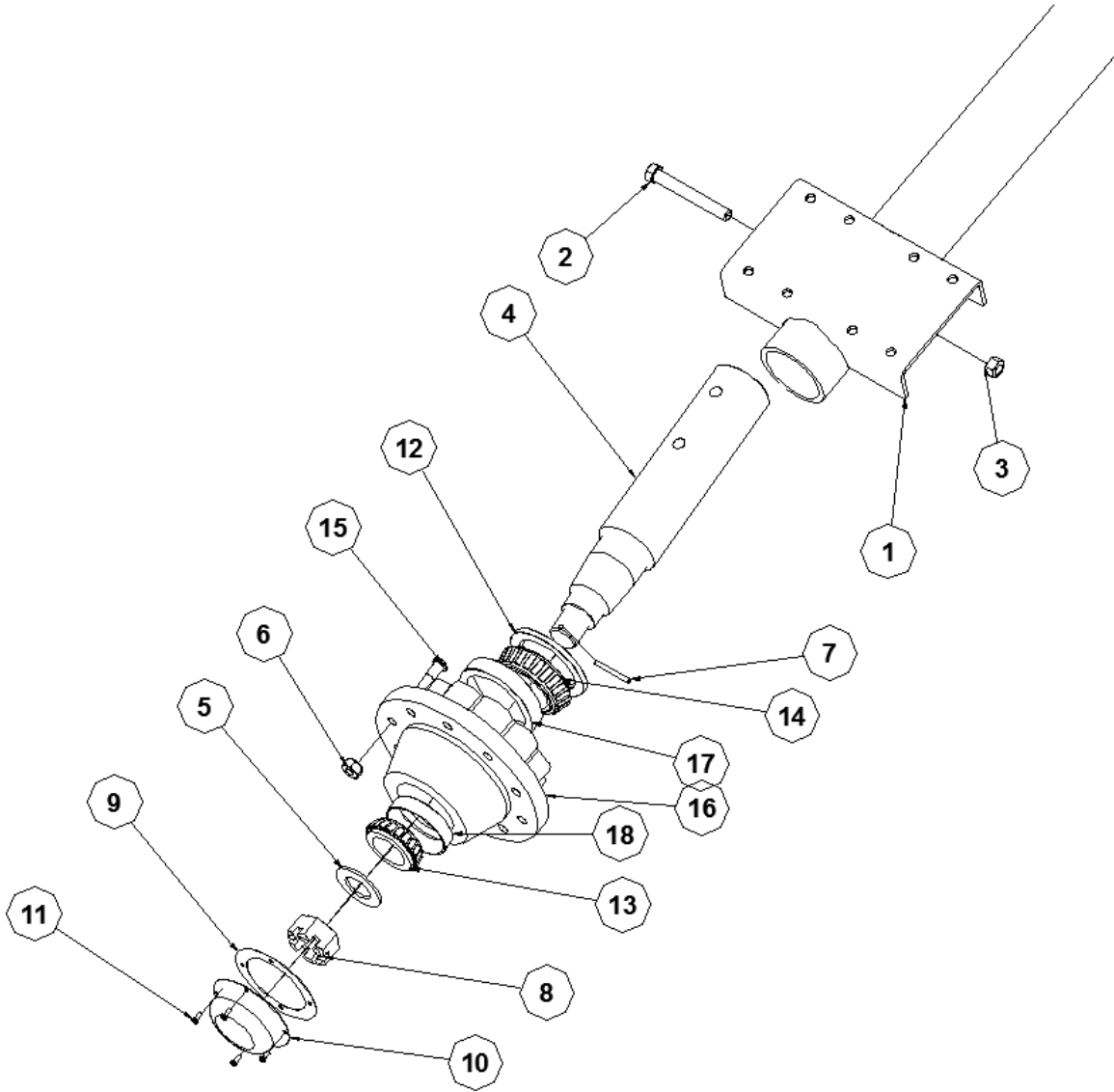


MS725 - MS875 - MS1050 FRAME

ITEM	QTY	PART NUMBER	DESCRIPTION
1	1	0-700560	FRAME ASSY, FRONT DISCHARGE, MECHINICAL DRIVE, 725,
	1	0-700538	FRAME ASSY, FRONT DISCHARGE, MECHINICAL DRIVE, 1050
	1	0-700744	FRAME ASSY, SIDE DISCHARGE, MECH DRIVE, 1050,COMER
2	2	0-700559	WEIGH BAR BRACKET, MECHANICAL, 30,000 LB FRAME, 725
	2	0-700558	WEIGH BAR BRACKET, MECHANICAL, 1050 & 875
3	1	0-700267	PLATFORM FOR SMALL VM
4	1	0-700414	REAR HAND RAIL ASSY. FOR VM PLATFORM
5	2	0-700388	PLATFORM LADDER ASSY FOR 360,550 & 2820
	2	0-700389	PLATFORM LADDER ASSY FOR 750
	2	0-700539	PLATFORM LADDER ASSY, MECHANICAL DRIVE 1050
6	1	0-700297	FRONT HANDRAIL ASSY FOR 550 PLATFORM
	1	0-700264	FRONT HAND RAIL ASSY FOR SMALL VM PLATFORM
7	1	0-700239	HITCH BRACKET ASSEMBLY, BOLT-ON
8	1	29T00-8000	JACK ASSEMBLY WITH TUBE, 10,000 LIFT, 7/8 PH
10	1	0-600605	SWIVEL MOUNT BRACKET 1/4 * 4 * 9
11	1	0-700272	INDICATOR ARM SWIVEL SMALL VM
12	1	0-320350	SWIVEL MOUNT INDICATOR BKT
13	1	0-320149	SCALE HEAD MOUNTING BRACKET
14	1	0-700408	BATTERY BOX , 12 GA * 13 * 35
17	1	0-600450	FRICTION DISC SWIVEL MOUNT, 1/8 RUBBER * 3 1/2 DIA
18	1	71UC2-0080	1/2-13 TOP LOCKNUT, ZP
19	1	72FH0-0080	1/2 FLAT WASHER, ZP
21	1	70HC2-1232	3/4-10 * 4 HHCS, GRD 2, ZP
23	1	10050-2605	PLUG STORAGE HOLDER FOR LIGHT HARNESS
24	2	71UC2-0040	1/4-20 TOP LOCKNUT, ZP
25	16	71WC2-0100	5/8-11 FLANGE LOCKNUT, ZP
26	16	72FH0-0100	5/8 FLAT WASHER, ZP
27	16	70HC5-1014	5/8-11 * 1 3/4 HHCS, GRD 5, ZP
28	2	70HC5-0406	1/4-20 * 3/4 HHCS, GRD 5, ZP
29	4	72FH0-0040	1/4 FLAT WASHER, ZP
30	4	70HF8-1222	3/4-16 * 2 3/4 HHCS, GRD 5, ZP
31	6	71UF5-0120	3/4-16 TOP LOCKNUT, ZP
32	28	70HC5-0606	3/8-16 * 3/4 HHCS, GRD 5, ZP
33	22	71WC2-0060	3/8-16 FLANGE LOCKNUT, ZP
34	4	70HC5-0608	3/8-16 * 1 HHCS, GRD 5, ZP
35	1	71UC2-0110	3/4-10 TOP LOCKNUT, ZP

SPINDLE
MS-000170

10-BOLT HUB, MS1050



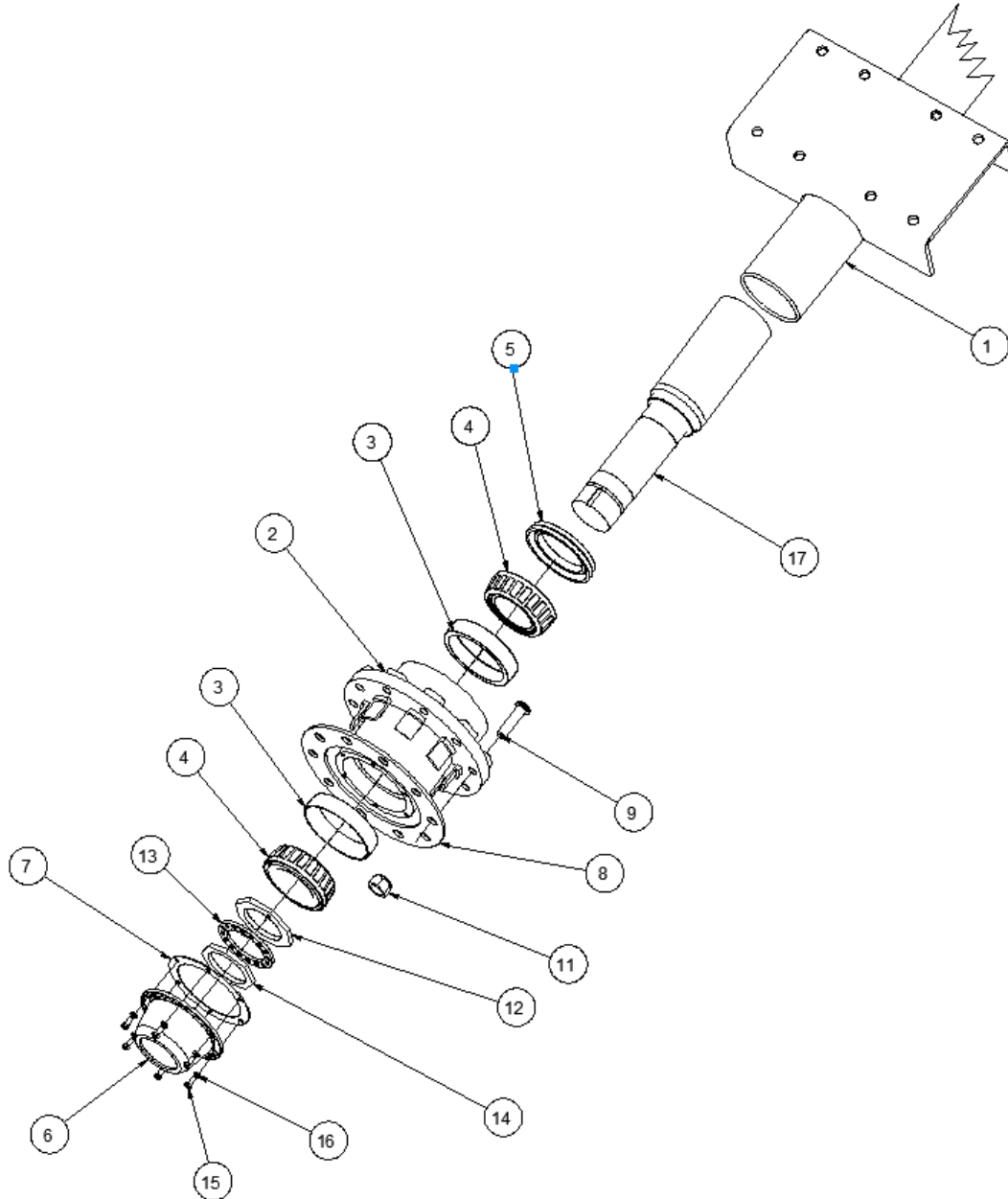
SPINDLE

10-BOLT HUB, MS1050

ITEM	QTY	PART NUMBER	DESCRIPTION
1	1	0-700531	AXLE ASSY 875, 1050, BOLT IN SPINDLE
2	4	70HC5-1664	1-8 * 8 HHCS, GRD 5
3	2	71UC5-0160	1-8 TOP LOCKNUT, ZP GRD 5
4	2	2028P-0185	SPINDLE, 5.480 DIA * 29.375 ASSEMBLY W/ NUT ,WASHER, PIN.
5	2	2009P-0002	SPINDLE WASHER, 2 9/16 ID * 4 1/2 OD * 1/4 THICK, FOR MS1050
6	20	1922P-0002	FLANGE NUT SWIVEL M22-1.5
7	2	2009P-0003	SPINDLE ROLL PIN, 3/8 * 3 1/2, FOR MS1050
8	2	2009P-0001	SPINDLE NUT, 2 1/2-12 SLOTTED, FOR MS1050
9	2	2009P-0005	HUBCAP GASKET 8 1/4 OD * 6 ID 4 HOLE, MS1050 FOR 250-10 HUB
10	2	2009P-0006	HUBCAP, 7 3/4 OD * 5 3/4 ID 4 HOLE, MS1050 FOR 250-10 HUB
11	8	70HC5-0506	5/16-18 * 3/4 HHCS, GRD 5, ZP
12	2	2009P-0007	GREASE SEAL, 7.50 OD * 5.50 ID, MS1050 FOR 250-10 HUB
13	2	2009P-0009	BEARING CONE OUTER 3.250 ID #663, MS1050 FOR 250-10 HUB
14	2	2009P-0008	BEARING CONE INNER 4.529 ID, MS1050, #71455 FOR 250-10 HUB
15	20	2009P-0010	WHEEL STUD, M22-1.5 * 100MM, MS1050 FOR 250-10 HUB
16	2	1930P-4505	HUB ASSY, 10 STUD, 13.19 BC, 25000 LB/ COMPLETE SEE NOTES
17	2	2009P-0011	INNER BEARING CUP MS1050, #71750 FOR 250-10 HUB
18	2	2009P-0012	OUTER BEARING CUP MS 1050, #653 FOR 250-10 HUB

SPINDLE
MS-000170

10-BOLT HUB, 725 – MS875

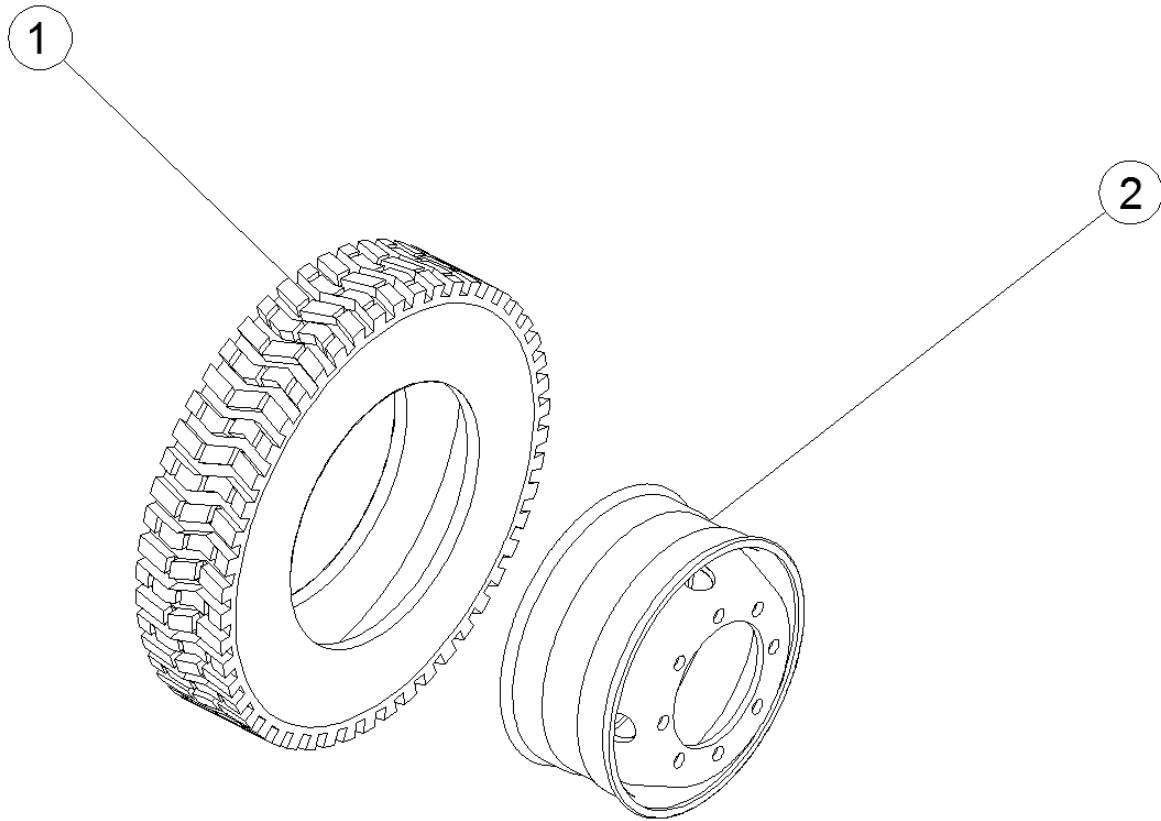


SPINDLE
10 BOLT SPINDLE MS550 / MS750

ITEM	QTY	PART NUMBER	DESCRIPTION
1	1	0-700580	AXLE ASSEMBLY, 30,000 CAPACITY, 725, 875
2	2	1930P-0109	HUB, 10 STUD W/ CUPS, RH, HUB PILOTED
3	4	1930P-0120	BRG CUP # HM518410
4	4	1930P-0105	BEARING CONE #518445
5	2	1930P-0100	GREASE SEAL #OUT851
6	2	1930P-0019	HUBCAP, OIL LUBE WITH GASKET
7	2	1930P-0021	HUBCAP GASKET
8	2	0-700386	10 BOLT DUAL WHEEL SPACER 1/4 * 13 1/4 DIA.
9	10	1930P-0115	WHEEL STUD.92 SHANK M22-1.5* 100MM
11	10	1922P-0002	FLANGE NUT SWIVEL M22-1.5
12	2	2030P-0101	SPINDLE NUT, INNER
13	2	2030P-0102	SPINDLE WASHER, 3 1/2 OD
14	2	2030P-0103	SPINDLE NUT, OUTER
15	12	70HC5-0506	5/16-18 * 3/4 HHCS, GRD 5, ZP
16	12	72LH0-0050	5/16 SPLIT LOCK WASHER, ZP
17	2	2030A-0100	SPINDLE, FOR ROCKWELL HUB, BOLT IN, 4 1/2 * 22 3/8

TIRES AND WHEELS

[MS-000180](#)

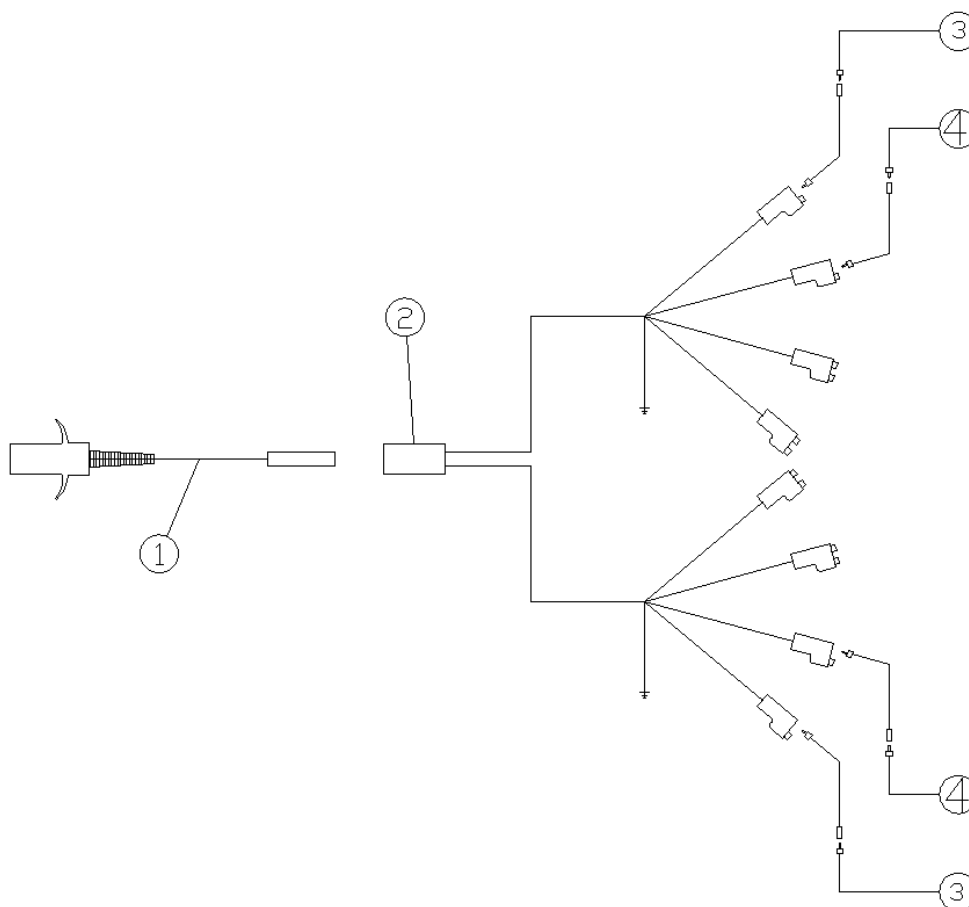


ITEM	QTY	PART NUMBER	DESCRIPTION
1	2	2100T-2212	TIRE, 315/80R22.5 ECLIPSE MUD & SNOW RECAP
	2	2100T-2217	TIRE 425/65R 22.5 WIDE BASE LUG CAP AND CASING
2	2	2110P-0924	WHEEL, 10-BOLT, 22.5 * 9, 9000 LB, 13.19 BC, HUB PILOTED
	2	2110P-0824	WHEEL, ACCURIDE HUB PILOTED, 22.5 * 8.25, 7400 LB RATING
	2	0-700800	WHEEL 22.5 x 13 10-HOLE W/ REINFORCING RING, FOR 7/8 STUDS

MS725 / MS875 / MS1050 WIRE DIAGRAM

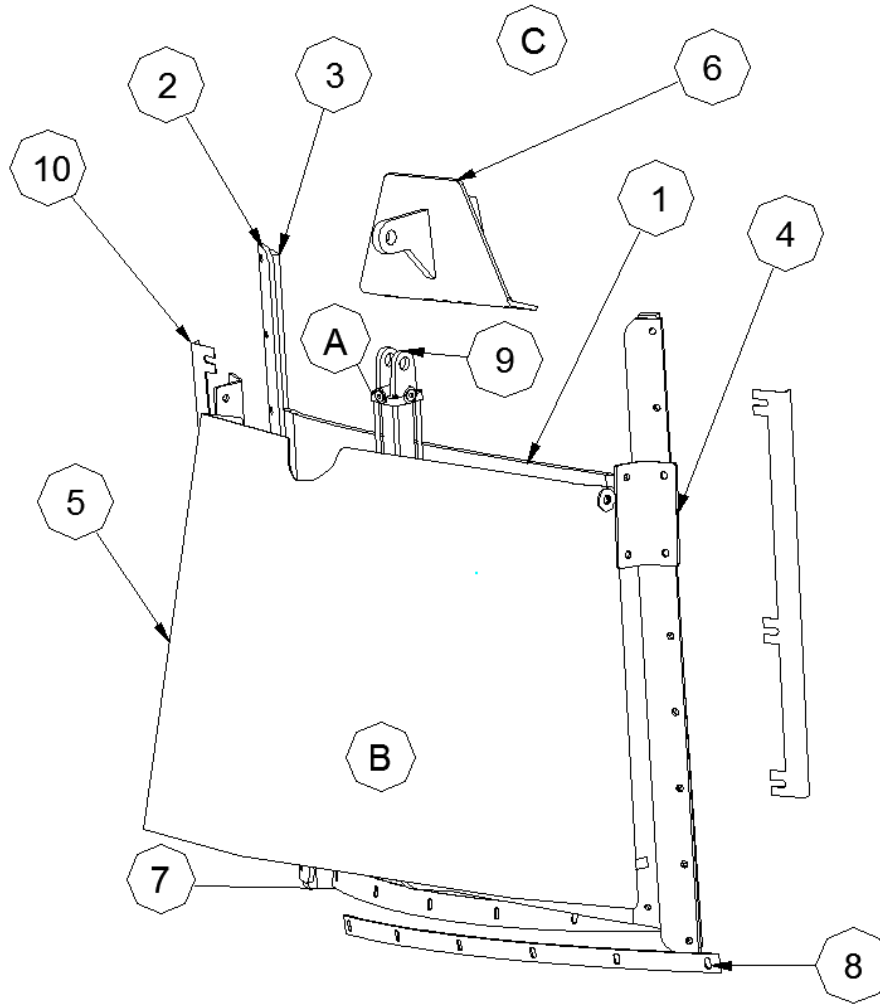
[MS-000190](#)

ITEM	QTY	PART NUMBER	DESCRIPTION
1	1	10050-2425	HARNESS, 30 FT STRAIGHT SECTION, SHIELD CABLE
2	1	10050-2510	HARNESS, WISHBONE 10 FT WITH CONNECTORS
3	2	10050-2600	AMBER LAMP, ROUND
4	2	10050-2601	RED LAMP, ROUND
5		10050-0010	LIGHT KIT FOR AG EQUIPMENT, W/ 30' HARNESS
6	1	10050-2605	PLUG STORAGE HOLDER FOR LIGHT HARNESS



WIRING DIAGRAM			
TERMINAL NUMBER	WIRE COLOR		CIRCUIT SERVICE
#1	WHITE		GROUND
#3	YELLOW		LEFT FLASHING/TURN SIGNAL
#5	GREEN		RIGHT FLASHING/TURN SIGNAL
#6	BROWN		TAIL LIGHTS
TERMINALS NOT USED BUT AVAILABLE FOR FUNCTIONS BELOW			
#2	BLACK		WORKING LIGHTS
#4	RED		AUXILIARY
#7	BLUE		AUXILIARY

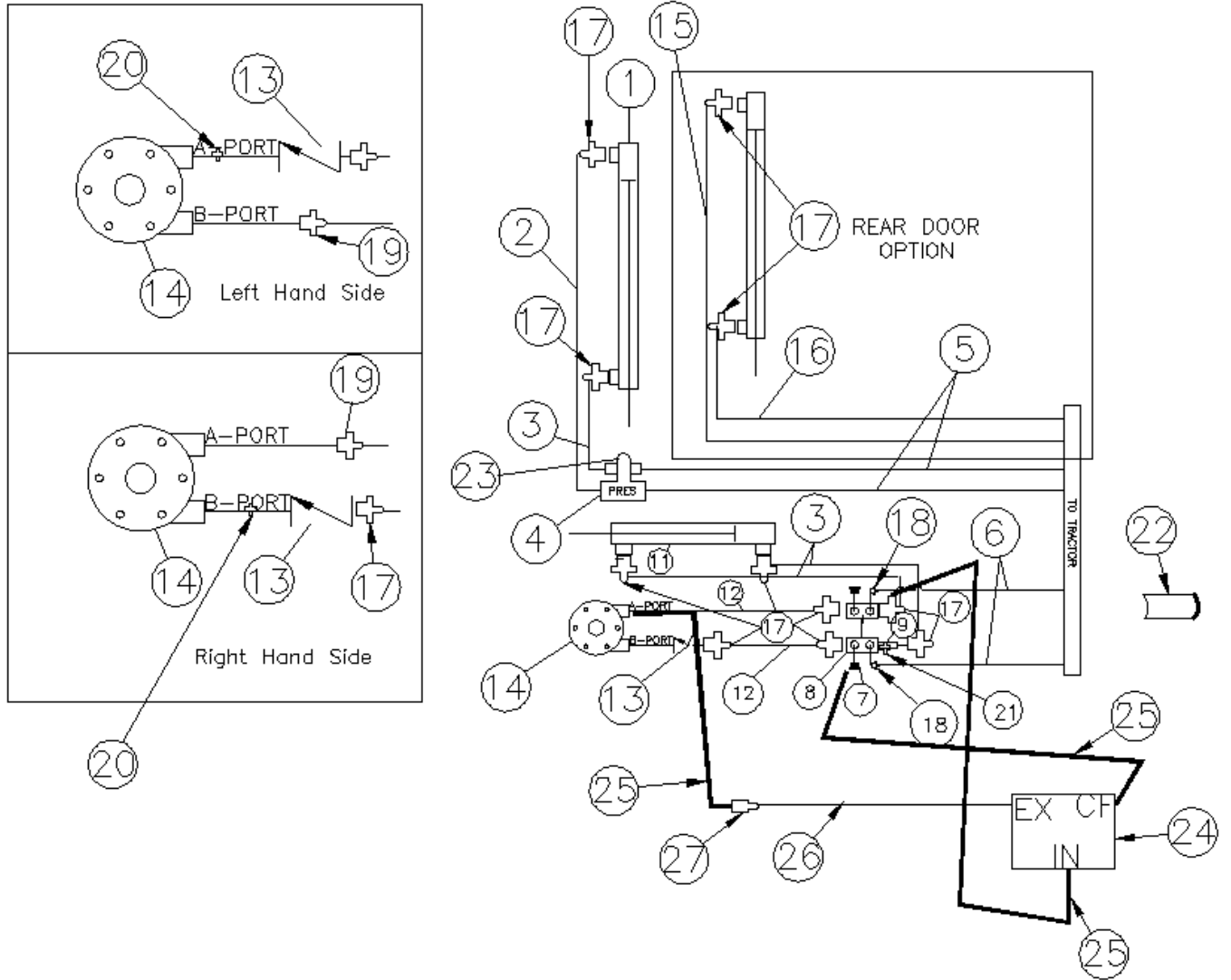
**REAR DISCHARGE DOOR
(OPTION)
MS-000210**



ITEM	QTY	PART NUMBER	DESCRIPTION
1	1	0-700563	DISCHARGE DOOR MS550 FOR CLEVIS CYLINDER
	1	0-700505	DISCHARGE DOOR MS750
2	2	0-700092	DOOR GUIDE STRAP 3/8 * 3 * 50
3	2	0-700093	DOOR SPACER STRAP 5/8 * 1 1/2 * 50
4	2	0-700445	REAR DOOR SHIELD MOUNT 1/4 * 5 1/2 * 8
5	1	0-700443	REAR DOOR SHIELD
6	1	0-700500	DISCHARGE DOOR CYLINDER BRKT MS550
	1	0-700578	UPPER CYLINDER BRACKET, MS750
7	1	40002-0239	RUBBER SEAL TS DOOR, 2 1/8 * 38 5/8
8	1	0-700390	FRONT DOOR SEAL STRAP 7 GA * 1 1/2 * 38 11/16
9	1	33E00-0226	HYD CYLINDER, 2 * 26, SAE #8 PORTS
	1	33E00-2530	HYD CYLINDER, 2 1/2 * 30, SAE #8 PORTS
10	2	0-700444	WIRE COVER 14 GA * 3 1/2 * 32
A	1	33PH2-3480	3/8-3000 PSI * 348, 9/16-18 FEMALE & 9/16-18 M 90 * SWIVEL
B	1	33PH2-3720	3/8-3000 PSI * 372, 9/16-18 FEMALE & 9/16-18 M 90 * SWIVEL
C	2	33PH2-1040	3/8-3000 PSI * 108, 9/16-18 STRAIGHT, BOTH ENDS

HYDRAULICS – DISCHARGE CONVEYOR

[MS-000200](#)

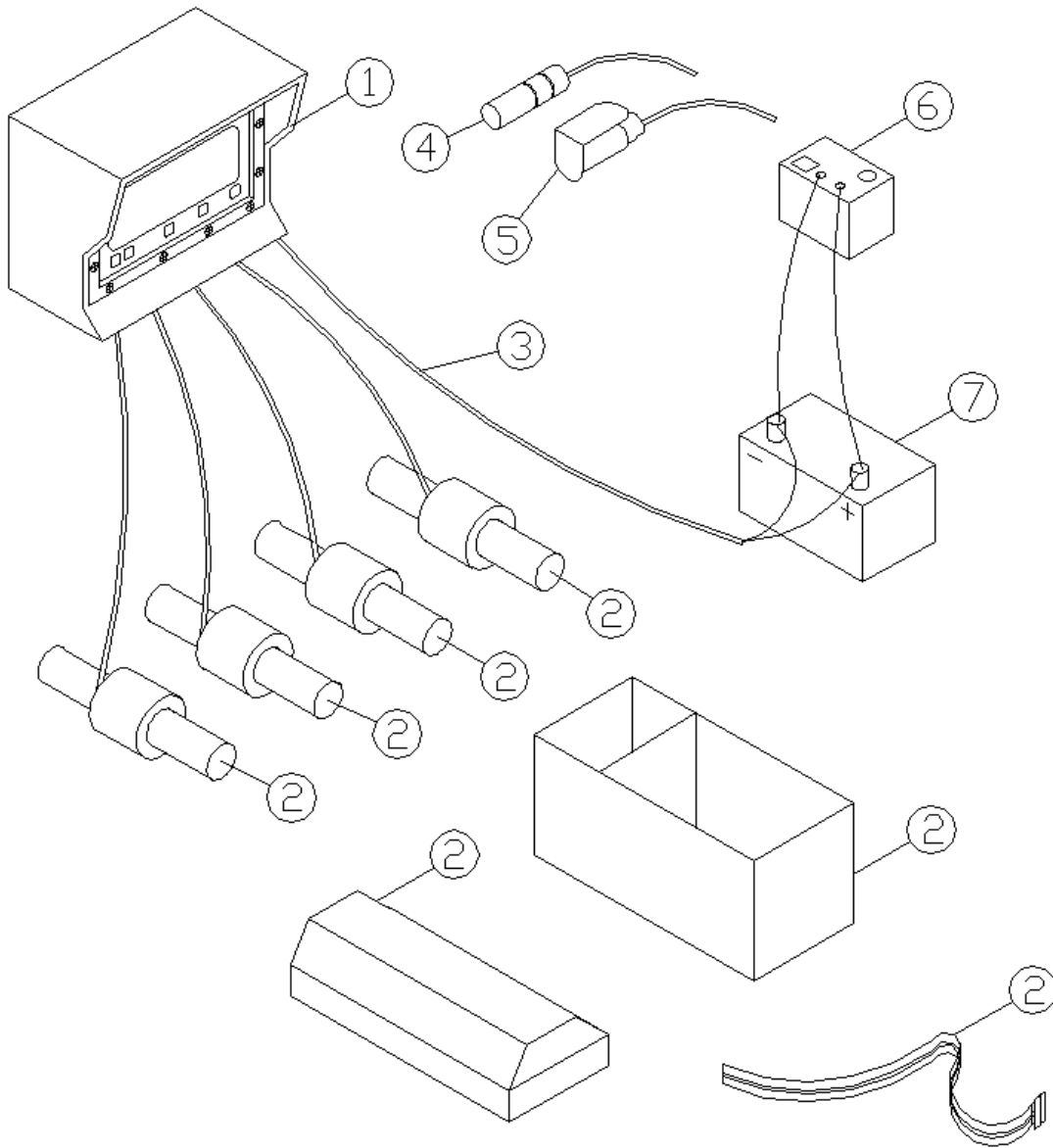


HYDRAULICS – DISCHARGE CONVEYOR

ITEM	QTY	PART NUMBER	DESCRIPTION
1	1	33E00-0226	HYD CYLINDER, 2 * 26, SAE #8 PORTS
	1	33E00-2530	HYD CYLINDER, 2 1/2 * 30, SAE #8 PORTS
2	1	33PH2-0740	3/8-3000 PSI * 78, 9/16-18 STRAIGHT & 9/16-18 90 DEG
3	3	33PH2-0481	3/8-3000 PSI * 48, 9/16 -18 STRAIGHT & 9/16 -18 90 DEG
4	1	33L01-1600	RELIEF VALVE, 1500 PSI (3) 3/4-16 O/R OPENING
5	2	33PH2-1040	3/8-3000 PSI * 108, 9/16-18 STRAIGHT, BOTH ENDS
6	2	33PH2-1322	3/8-3000 PSI * 132, 9/16-18 90 & 9/16-18 STRAIGHT
7	2	33HT6408-6	9/16-18 O-RING HEX HEAD PLUG
8	2	33F00-1209	HYD HEADER MANIFOLD,(2) 3/4 O/R PORT,(2) 9/16 O/R PORT
9	1	33L00-1009	CHECK VALVE 7/8-14 'O' RING MALE-FEMALE 8 GPM, (CHECK NOTES)
11	1	33E00-0208	HYD CYLINDER, 2 * 8, SAE #8 O/R PORTS
12	2	33PH2-0481	3/8-3000 PSI * 48, 9/16 -18 STRAIGHT & 9/16 -18 90 DEG
	2	33HT2403-6	9/16-18 TO 9/16-18 JIC UNION
	2	33PH2-0740	3/8-3000 PSI * 78, 9/16-18 STRAIGHT & 9/16-18 90 DEG
13	1	33L00-1014	CHECK VALVE WITH RESTRICTOR, 1/16 ORIFICE, #8 O-RING PORTS
14	1	33BAG-0000	HYD MOTOR, 11.9 CU IN
15	1	33PH2-3720	3/8-3000 PSI * 372, 9/16-18 FEMALE & 9/16-18 M 90 * SWIVEL
16	1	33PH2-3480	3/8-3000 PSI * 348, 9/16-18 FEMALE & 9/16-18 M 90 * SWIVEL
17	13	33HT6400-6-8	9/16-18 ORFS TO 3/4-16 O-RING 37^ JIC
18	2	33HT6400-6	9/16-18 37^ JIC TO 9/16-18 O-RING
19	1	33HT6400-6-10	9/16-18 37^ JIC TO 7/8-14 O-RING
20	1	33HT6403-8-10	3/4-16 MALE O-RING TO 3/4-16 MALE O-RING UNION
21	1	33HT6403-8-8	3/4-16 MALE O-RING TO 3/4-16 MALE O-RING UNION
22	2	33QPC-4000	PIONEER COUPLER, MALE TIP 3/4 O/R
23	1	33HT6803-6-6-8	9/16-18 & 9/16-18 MALE TO 3/4-16 O-RING BRANCH TEE
24	1	33HT6801-6-8	9/16-18 TO 3/4-16 O-RING 90^ STR THREADED ELBOW CONN

ELECTRONIC SCALE – WEIGH TRONIX

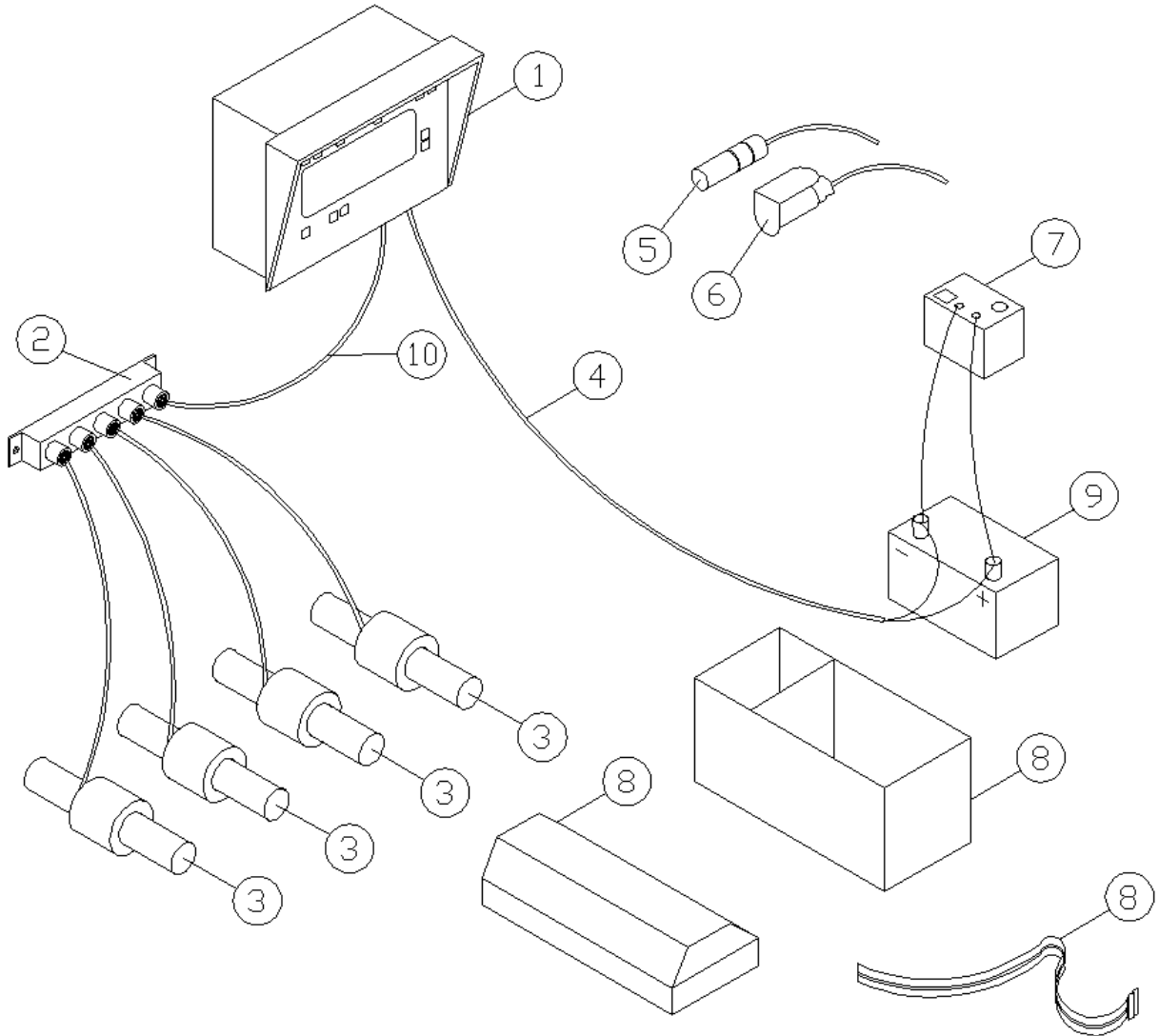
[MS-000220](#)



ITEM	QTY	PART NUMBER	DESCRIPTION
1	1	32W64-640X	W-T INDICATOR MODEL 640XL W/REMOTE PORT 5-PIN GA 2.500
	1	32WRD-40XL	RD40XL LARGE REMOTE DISPLAY 30' CABLE
2	4	32W4T-5430	TRUCK MOUNT WB, 2 1/2 OD GA 2.500, 5-PIN 30' CORD, 725
	4	32W7T-5430	PLATFORM BAR 2 7/8, 875-1050
3	1	32WPC-2018	POWER CORD 12V, DIGITAL 2PIN, TO BATTERY
	1	32WPC-2008	POWER CORD 12V, 2 PIN, FOR WEIGH-TRONIX
4	1	32WPC-2030	POWER CORD 12V, 2 PIN, FOR WEIGH-TRONIX, TO TRACTOR
5	1	32WPC-0000	W-T QUICK DETACH PLUG-IN
6	1	32B00-1002	1 1/2 AMP BATTERY CHARGER
7	1	32B00-0990	MARINE BATTERY, 12 VOLT W/ACID & CHARGE (SMALLER UNIT)
8	1	32B00-1004	PLASTIC BATTERY BOX, 11 * 7 1/2 * 8 3/4
9	4	0-700597	WEIGHBAR SPACER TUBE 2 3/4 OD * 2 5/32 ID * 1 1/2

ELECTRONIC SCALE – DIGI-STAR

[MS-000230](#)



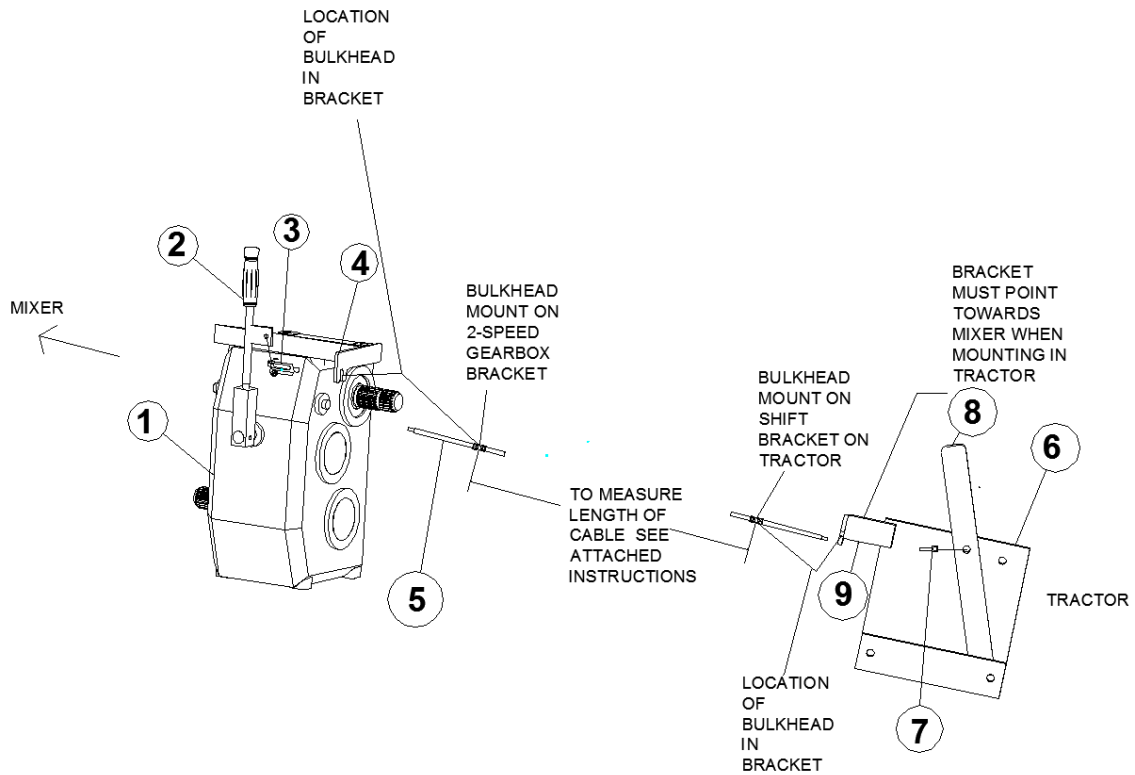
ITEM	QTY	PART NUMBER	DESCRIPTION
1	1	32J40-V240	DIGI-STAR EZ VIEW 2400 INDICATOR W/REMOTE PORT
2	1	32WJB-5000	WEIGH TRONIX J-BOX, 5-PIN TO 5 PIN
3	4	32W4T-5430	TRUCK MOUNT WB, 2 1/2 OD GA 2.500, 5-PIN 30' CORD, 725-875
4	4	32W7T-5430	PLATFORM BAR 2 7/8, 1050
4	1	32JPC-4011	POWER CORD, 4 PIN, F/POWER PAK
5	1	32JPC-4027	POWER CORD, 4 PIN, 27', F/POWER PAK
6	1	32WPC-0000	W-T QUICK DETACH PLUG-IN
7	1	32B00-1002	1 1/2 AMP BATTERY CHARGER
8	1	32B00-1004	PLASTIC BATTERY BOX, 11 * 7 1/2 * 8 3/4
9	1	32B00-0990	MARINE BATTERY, 12 VOLT W/ACID & CHARGE (SMALLER UNIT)
10	1	32WJB-5400	W-T TO DIGI-STAR, 15' J-BOX CORD 5 PIN TO 4 PIN
11	4	0-700597	WEIGHBAR SPACER TUBE 2 3/4 OD * 2 5/32 ID * 1 1/2

INSTRUCTIONS FOR MEASURING CABLE FOR 2-SPEED GEARBOX MECH. SHIFTER

1. The tractor universal shift handle bracket and the corresponding 2-speed gearbox bracket are designed **specifically for Teleflex Morse Controls Blak-Jaket Cables, 40 Series (1/4-1/4-28 thread), with 4" stroke travel.**
2. To order the correct length cable, the overall length is needed.
3. First, plan the route of the shift cable to the shift handle bracket location on the tractor. Avoid sharp bends in the shift cable.
4. Next, measure from the bulkhead mount on the 2-speed gearbox to the Bulkhead mount on the shift handle bracket on the tractor.
IMPORTANT: Add additional cable length for turning without stretching the cable tight, breaking the cable, crimping the cable or damaging the brackets.
5. Next, add 18" to the measurement arrived at in step 4. This is the "overall length" measurement needed to order the shift cable for that particular application. The ends required on the shift cable to complete are Teleflex Morse part no. A41134 Terminal (1/4-28 thd.) and Teleflex Morse part no. A45985 Clevis (1/4-28thd.). The terminal goes on the tractor end of the cable, attaching to the shift handle bracket on the tractor.
6. With this information, the Schuler Mfg. parts department can get a price quote for you and order the shift cable with your approval.
7. Shift cables are customer made-to-order and may not be returned.
8. Shift cables are not covered under the Schuler machine warranty, nor is damage to the brackets caused by the shift cable.

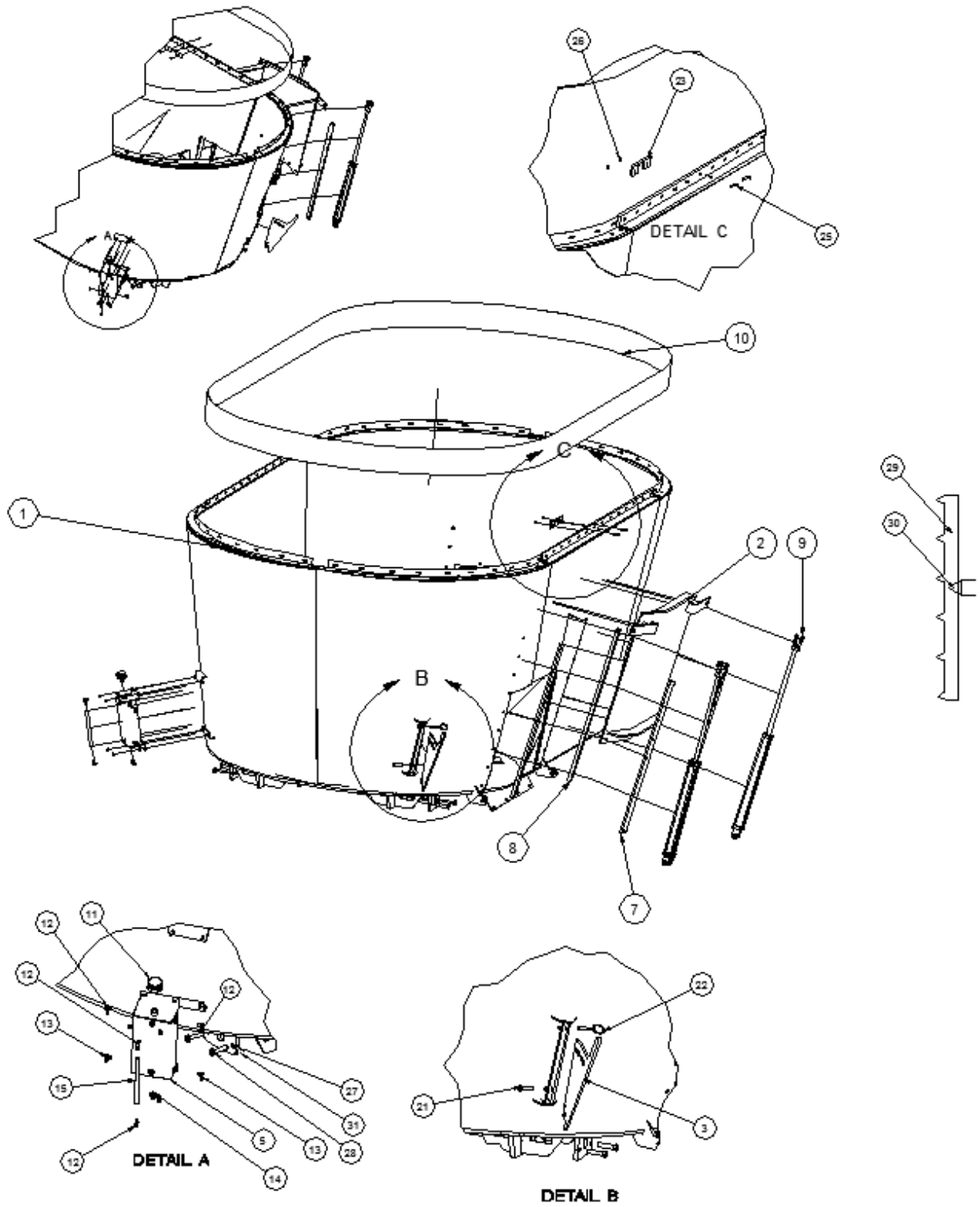
2-SPEED SHIFT CABLE OPTION

MS-000250



ITEM	QTY	PART NUMBER	DESCRIPTION
1	1	26S24-5367	GEARBOX 2-SPEED, 1:5 TO 1:1 WITH 1 3/4-20 INPUT AND OUTPUT
2	1	0-700752	TWO SPEED CABLE SHIFTING ROD ASSY
3	1	35045-0000	CLEVIS, 1/4-28 THREAD
4	1	0-700753	TWO SPEED CABLE SHIFTING ANGLE ASSY
5	1		CABLE
6	1	0-700756	TWO SPEED CABLE SHIFT CAB MOUNT
7	1	35040-0000	TERMINAL EYE, 1/4-28
8	1	0-700754	TWO SPEED CABLE SHIFT LEVER, 1/4 * 1 1/2 * 16
9	1	0-700755	TWO SPEED CABLE SHIFT MOUNTING BKT, 3/16 * 3 7/8 * 12

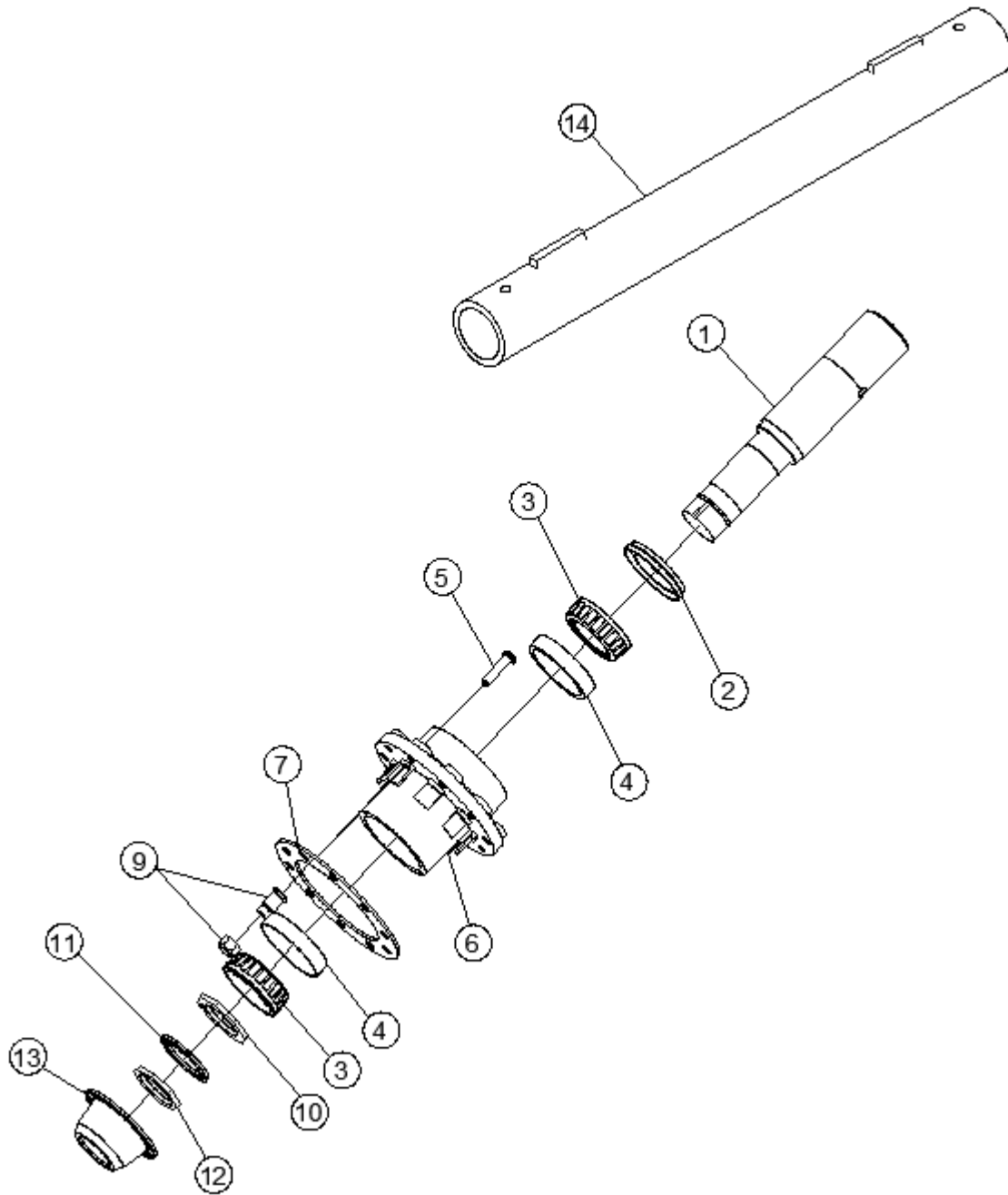
SIDE DISCHARGE 1050 MIXER TUB ASSEMBLY



SIDE DISCHARGE 1050 MIXER TUB ASSEMBLY

ITEM	QTY	PART NUMBER	DESCRIPTION
1	1	0-700743	TUB ASSEMBLY, SIDE DISCHARGE, MECH DRIVE, COMER, 1050H
	1	0-700644	TUB ASSEMBLY, SIDE DISCHARGE, MECH DRIVE, COMER, 725
	1	0-700461	TUB ASSEMBLY, SIDE DISCHARGE, MS 875, FOR COMER PLANETARY
2	1	0-700336	DOOR ASSY MULTI SCREW, SIDE DISCHARGE
3	2	0-700379	HAY RESISTOR PLATE 1/2 * 11 5/8 * 18
5	1	0-700687	OIL RESERVOIR, MULTI SCREW, 1050H
	1	0-700351	OIL RESERVOIR, MULTI SCREW, 725-875
7	2	0-700092	DOOR GUIDE STRAP 3/8 * 3 * 50
8	2	0-700093	DOOR SPACER STRAP 5/8 * 1 1/2 * 50
9	2	33E00-0230	HYD CYLINDER, 2 * 30, 3/4-16 O/R PORTS
10	1	960B0-0800-000	2 PLY 220, 3/8 * 8 WIDE
11	1	26SPG-0001	FILLER CAP, PLANETARY RESERVOIR
12	4	33HT4290-6-4	3/8 ID HOSE BARB TO 90 DEG ELBOW 1/4-NPT MALE PIPE
13	2	33HT4290-8-4	1/2 ID HOSE BARB TO 90^ ELBOW 1/4-NPT MALE PIPE
14	1	33HT5406-P-12	3/4-NPT MALE HEX HEAD PLUG
15	1	7406T-0000	3/8 ID CLEAR VINYL TUBING
17	4	71WC2-0060	3/8-16 FLANGE LOCKNUT, ZP
21	2	70HC5-1020	5/8-11 * 2 1/2 HHCS, GRD 5, ZP
22	2	73D00-1029	BALL, SPRING PIN, 5/8 DIA * 2 1/2
23	36	0-700372	RUBBER EXTENSION STRAP, 1/4 * 2 * 12
25	72	70HC5-0512	5/16-18 * 1 1/2 HHCS, GRD 5, ZP
26	72	71UC2-0050	5/16-18 TOP LOCKNUT, ZP
27	4	0-700079	WEIGH BAR BRACKET, 3/4 * 6 * 9, TWINSREW
	4	0-700370	WEIGH BAR BRACKET, 3/4 * 5 * 9
28	8	70HC5-1228	3/4-10 * 3 1/2 HHCS, GRD 5, ZP
	8	70HC5-1220	3/4-10 * 2 1/2 HHCS, GRD 5, ZP
29	1	0-700035	DOOR GAUGE VERTICAL 12 GA * 6 1/2 * 30
30	1	0-700085	VERTICAL MIXER DOOR GAUGE 14 GA * 5 * 6
31	4	0-700342	WEIGH BAR BRACKET CAP, 3/8 * 6 * 9

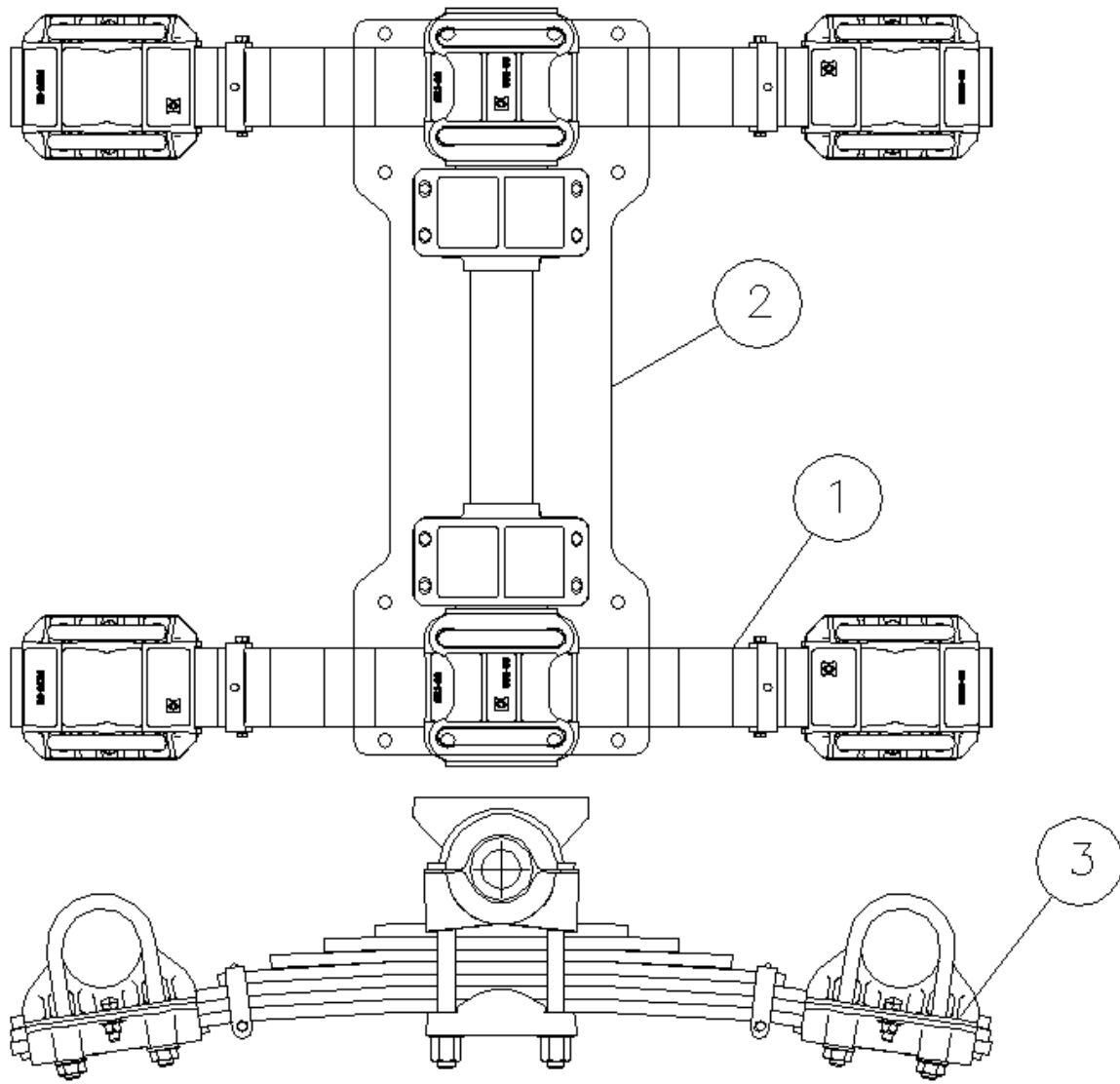
SPINDLE ASSEMBLY, HUTCHINSON SUSPENSION
[MS-000260](#)



SPINDLE ASSEMBLY, HUTCHINSON SUSPENSION

ITEM	QTY	PART NUMBER	DESCRIPTION
1	4	2030A-0101	SPINDLE, BOLT IN, 4 1/2 STRESSPROOF * 29
2	4	1930P-0100	GREASE SEAL #OUT851
3	8	1930P-0105	BEARING CONE #518445
4	8	1930P-0120	BRG CUP # HM518410
5	40	1930P-0115	WHEEL STUD.92 SHANK M22-1.5* 100MM
6	4	1930P-0109	HUB, 10 STUD W/ CUPS, RH, HUB PILOTED
7	4	0-700386	10 BOLT DUAL WHEEL SPACER 1/4 * 13 1/4 DIA.
9	40	1922P-0002	FLANGE NUT SWIVEL M22-1.5
10	4	2030P-0101	SPINDLE NUT, INNER
11	4	2030P-0102	SPINDLE WASHER, 3 1/2 OD
12	4	2030P-0103	SPINDLE NUT, OUTER
13	4	1930P-0019	HUBCAP, OIL LUBE WITH GASKET
14	2	0-700788	AXLE TUBE ASSY, 50,000 CAPACITY, LEAF SPRING ASSY

TANDEM AXLE, LEAF SPRING ASSEMBLY HUTCHINSON SUSPENSION



ITEM	QTY	PART NUMBER	DESCRIPTION
1	1	0-700799	TANDEM AXLE ASSY, 50,000 CAPACITY, LEAF SPRING, MS750
2	1	0-871382	JACK SHAFT BEARING BRACKET, 3/8 * 10 1/8 * 19
3	1	2040P-0100	LEAF SPRING AXLE KIT, 50K

TANDEM AXLE, LEAF SPRING ASSEMBLY HUTCHINSON SUSPENSION

WARNING

SAFETY ALERT! (1) FOLLOW ALL TORQUE REQUIREMENTS. (2) DO NOT USE ANY COMPONENT WITH VISIBLY WORN OR DAMAGED THREADS. FAILURE TO FOLLOW THESE SAFETY ALERTS CAN LEAD TO LOSS OF VEHICLE CONTROL, PROPERTY DAMAGE AND SERIOUS PERSONAL INJURY OR DEATH.

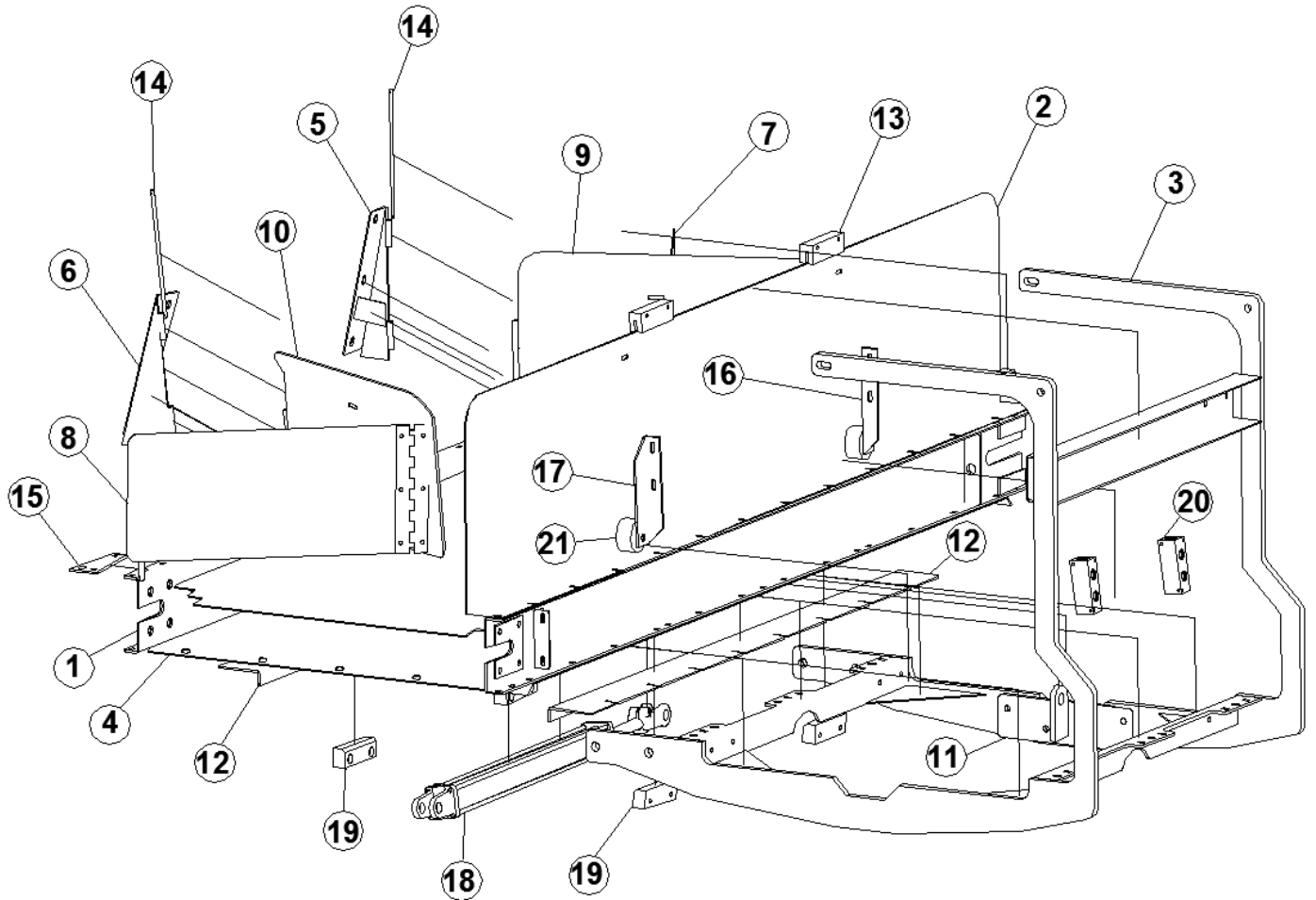
**HUTCHINSON SUSPENSION TORQUE REQUIREMENTS
900/440 SERIES (DECAL PART NUMBER 16087-01 REV. E)**

After an initial break in period, approximately 1000 miles, and at least every 4 months periodically thereafter, ALL bolts and nuts should be checked to insure that recommended torque values are being maintained.

Oil torque values listed are for new fasteners with lubricated threads. It is recommended that new installations be performed with oiled fasteners. For dry threads which have been in service, use the higher torque values which are noted below.

	OILED	DRY
1 1/8-12 UNF.....	670 lb-ft	880 lb-ft
1-14 UNF.....	540 lb-ft	730 lb-ft
7/8-14 UNF.....	500 lb-ft	670 lb-ft
3/4-16 UNF.....	220 lb-ft	300 lb-ft
5/8-18 UNF.....	130lb-ft	180 lb-ft

HYD. SIDE SHIFT DUAL DISCHARGE 81X CHAIN



HYD. SIDE SHIFT DUAL DISCHARGE 81X CHAIN

ITEM	QTY	PART NUMBER	DESCRIPTION
1	1	0-700725	FRONT DIS DUAL DIRECTION CONVEYOR, 101 OAL, 81X CHAIN
2	1	0-700749	DUAL DISCHARGE FRONT SHIELD , 12 GA * 23 3/4 * 101
3	1	0-700659	FRONT CONVEYOR CRADDLE, FOR HYD SIDE SHIFT
4	1	0-700668	SLIDE SHIELD BOTTOM CONVEYOR WELDMENT
5	1	0-700665-L	SHIELD MOUNT BRACKET WELDMENT, LH
6	1	0-700665-R	SHIELD MOUNT BRACKET WELDMENT, RH
7	1	0-700666-L	SWING SHIELD SLIDING CONVEYOR WELDMENT, LH
8	1	0-700666-R	SWING SHIELD SLIDING CONVEYOR WELDMENT, RH
9	1	0-700667-L	SWING SHIELD SLIDING CONVEYOR ASSY
10	1	0-700667-R	SWING SHIELD SLIDING CONVEYOR ASSY
11	1	0-700669	CYLINDER BRACKET BOLT ON WELDMENT
12	2	0-700664	BOTTOM SLIDE PLATE SLIDING CONVEYOR, 7 GA * 5 1/2 * 66
13	2	0-700660	SLIDE BLOCK 1 1/4 UHMW * 1 3/4 * 6
14	2	0-700682	SHIELD HINGE ROD 5/16 CRR * 12
15	2	0-700662	SLIDING CONVEYOR SHIELD END HINGE BKT, 7 GA * 3 * 7 3/4
16	1	0-700663-L	SLIDING CONVEYOR ROLLER ANGLE, 7 GA * 3 1/2 * 10
17	1	0-700663-R	SLIDING CONVEYOR ROLLER ANGLE, 7 GA * 3 1/2 * 10
18	1	33E00-0224	HYD CYLINDER, 2 * 24, SAE #8 O/R PORTS
19	4	0-700661	SLIDE BLOCK 1 1/4 UHMW * 1 3/4 * 6
20	2	33F00-1209	HYD HEADER MANIFOLD,(2) 3/4 O/R PORT,(2) 9/16 O/R PORT
21	2	0-700781	IDLER, NYLON, W/BUSHING, 5/8 B * 3 OD * 1 1/2